

## SPECLIN POWER TRANSFORMER

SST and DST series is P.C board transformers use a "split bobbin" which allows the primaries and Secondaries to be wound non-concentrically, ( i.e., side by side rather than one over the other )

This has the advantages of cost savings and superior performance,

**primarily :**

High isolation\_\_\_\_2000V RMS hipot is standard.

Class B insulation\_\_\_\_130

Low capacitive coupling-no electro-staic shield is necessary.

Less manufacturing time-no cross-overs of primary and second-dary leads.

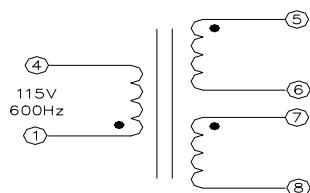
PC pins-allow direct insertion in PC boards.

Each transformer is available with single 115V or dual 115/230V primaries. In addition, secondaries are Split so that they can be series or parallel connected. Variations can be made to meet special needs.

**SINGLE**

**115V PRIMARY**

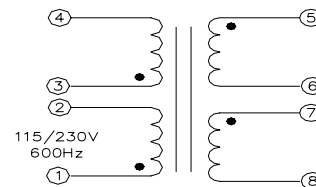
**TYPE SST ( 6PIN )**



**DUAL**

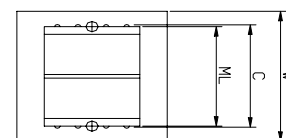
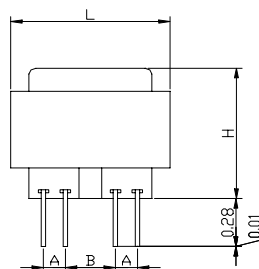
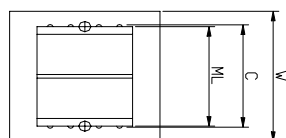
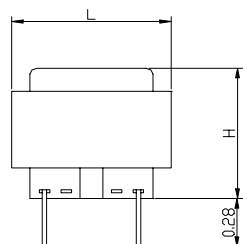
**115/230V PRIMARY**

**TYPE DST ( 8PIN )**



DIMENSIONS									UNIT : INCH	
Size	VA	L	W	H	ML	A	B	C	Optional Mtg Screw & Nut	Lbs
2	1.1	1 <sup>3</sup> / <sub>3</sub>	1 <sup>1</sup> / <sub>8</sub>	1 <sup>3</sup> / <sub>16</sub>	-	.250	.250	1.200	None	0.17
3	2.4	1 <sup>3</sup> / <sub>3</sub>	1 <sup>1</sup> / <sub>8</sub>	1 <sup>5</sup> / <sub>16</sub>	-	.250	.250	1.200	None	0.25
4	6	1 <sup>5</sup> / <sub>8</sub>	1 <sup>5</sup> / <sub>16</sub>	1 <sup>5</sup> / <sub>16</sub>	1 <sup>1</sup> / <sub>16</sub>	.250	.350	1.280	4-40x1 <sup>3</sup> / <sub>8</sub>	0.44
5	12	1 <sup>7</sup> / <sub>8</sub>	1 <sup>9</sup> / <sub>16</sub>	1 <sup>7</sup> / <sub>16</sub>	1 <sup>1</sup> / <sub>4</sub>	.300	.400	1.410	4-40x1 <sup>3</sup> / <sub>8</sub>	0.70
6	20	2 <sup>1</sup> / <sub>4</sub>	1 <sup>7</sup> / <sub>8</sub>	1 <sup>7</sup> / <sub>16</sub>	1 <sup>1</sup> / <sub>2</sub>	.300	.400	1.600	4-40x1 <sup>3</sup> / <sub>8</sub>	0.80
7	26	2 <sup>5</sup> / <sub>8</sub>	2 <sup>3</sup> / <sub>16</sub>	1 <sup>9</sup> / <sub>16</sub>	+	.400	.400	1.850	+	1.1

Available Part No. ST-MS ( Screw ) & Part No. ST-MN ( Nut ) + Size 7 has 4 mtg holes on 2 <sup>3</sup>/<sub>16</sub> x 1 <sup>3</sup>/<sub>4</sub> centers for a # 6 screw



**TYPE : SST ( 6PIN ) / TYPE : DST ( 8PIN )**

PART NUMBER		SECONDARY RMS RATING	
SINGLE 115V ( 6PIN )	DUAL 115/230V ( 8PIN )	SERIES	PARALLEL
SST 2-6	DST 2-6	6V C.T.@.18A	3V @ .36A
SST 2-10	DST 2-10	10V C.T.@.11A	5V @ .22A
SST 2-12	DST 2-12	12.6V C.T.@.09A	6.3V @ .18A
SST 2-16	DST 2-16	16V C.T.@.07A	8V @ .14A
SST 2-20	DST 2-20	20V C.T.@.055A	10V @ .11A
SST 2-24	DST 2-24	24V C.T.@.045A	12V @ .09A
SST 2-28	DST 2-28	28V C.T.@.04A	14V @ .08A
SST 2-30	DST 2-30	30V C.T.@.04A	15V @ .08A

PART NUMBER		SECONDARY RMS RATING	
SINGLE 115V (6PIN)	DUAL 115/230V (8PIN)	SERIES	PARALLEL
SST 3-6	DST 3-6	6V C.T.@. 4A	3V @. 8A
SST 3-10	DST 3-10	10V C.T.@. 25A	5V @. 5A
SST 3-12	DST 3-12	12.6V C.T.@. 2A	6.3V @. 4A
SST 3-16	DST 3-16	16V C.T.@. 15A	8V @. 3A
SST 3-20	DST 3-20	20V C.T.@. 12A	10V @. 24A
SST 3-24	DST 3-24	24V C.T.@. 1A	12V @. 2A
SST 3-28	DST 3-28	28V C.T.@. 085A	14V @. 17A
SST 3-30	DST 3-30	30V C.T.@. 085A	15V @. 17A

PART NUMBER		SECONDARY RMS RATING	
SINGLE 115V (6PIN)	DUAL 115/230V (8PIN)	SERIES	PARALLEL
SST 4-6	DST 4-6	6V C.T.@. 1A	3V @ 2A
SST 4-10	DST 4-10	10V C.T.@. 6A	5V @ 1.2A
SST 4-12	DST 4-12	12.6V C.T.@. 5A	6.3V @ 1A
SST 4-16	DST 4-16	16V C.T.@. 4A	8V @ 8A
SST 4-20	DST 4-20	20V C.T.@. 3A	10V @ 6A
SST 4-24	DST 4-24	24V C.T.@. 25A	12V @ 5A
SST 4-28	DST 4-28	28V C.T.@. 2A	14V @ 4A
SST 4-30	DST 4-30	30V C.T.@. 2A	15V @ 4A

PART NUMBER		SECONDARY RMS RATING	
SINGLE 115V (6PIN)	DUAL 115/230V (8PIN)	SERIES	PARALLEL
SST 5-6	DST 5-6	6V C.T.@. 2A	3V @ 4A
SST 5-10	DST 5-10	10V C.T.@. 1.2A	5V @ 2.4A
SST 5-12	DST 5-12	12.6V C.T.@. 1A	6.3V @ 2A
SST 5-16	DST 5-16	16V C.T.@. .8A	8V @ 1.6A
SST 5-20	DST 5-20	20V C.T.@. .6A	10V @ 1.2A
SST 5-24	DST 5-24	24V C.T.@. .5A	12V @ 1A
SST 5-28	DST 5-28	28V C.T.@. .42A	14V @ .84A
SST 5-30	DST 5-30	30V C.T.@. .4A	15V @ .8A

PART NUMBER		SECONDARY RMS RATING	
SINGLE 115V (6PIN)	DUAL 115/230V (8PIN)	SERIES	PARALLEL
SST 6-6	DST 6-6	6V C.T.@. 3.2A	3V @ 6.4A
SST 6-10	DST 6-10	10V C.T.@. 2A	5V @ 4A
SST 6-12	DST 6-12	12.6V C.T.@. 1.6A	6.3V @ 3.2A
SST 6-16	DST 6-16	16V C.T.@. 1.25A	8V @ 2.5A
SST 6-20	DST 6-20	20V C.T.@. 1A	10V @ 2A
SST 6-24	DST 6-24	24V C.T.@. .8A	12V @ 1.6A
SST 6-28	DST 6-28	28V C.T.@. .7A	14V @ 1.4A
SST 6-30	DST 6-30	30V C.T.@. .7A	15V @ 1.4A

PART NUMBER		SECONDARY RMS RATING	
SINGLE 115V (6PIN)	DUAL 115/230V (8PIN)	SERIES	PARALLEL
SST 7-6	DST 7-6	6V C.T.@. 6A	3V @ 12A
SST 7-10	DST 7-10	10V C.T.@. 3.6A	5V @ 7.2A
SST 7-12	DST 7-12	12.6V C.T.@. 2.85A	6.3V @ 5.7A
SST 7-16	DST 7-16	16V C.T.@. 2.25A	8V @ 4.5A
SST 7-20	DST 7-20	20V C.T.@. 1.8A	10V @ 3.6A
SST 7-24	DST 7-24	24V C.T.@. 1.5A	12V @ 3A
SST 7-28	DST 7-28	28V C.T.@. 1.3A	14V @ 2.6A
SST 7-30	DST 7-30	30V C.T.@. 1.2A	15V @ 2.4A