

INTRODUCTION:

Adam Tech Flat Cable IDC D-Sub connectors are a popular interface for many I/O and cable assembly applications. Offered in 9, 15, 25, 37 and 50 positions they are an excellent choice for a low cost industry standard connection that terminates .050" flat cable quickly, easily and compactly. These connectors are manufactured with precision stamped contacts offering a choice of contact plating and a wide selection of mating and mounting options.

FEATURES:

- Quickly terminates to flat cable
- Industry standard compatibility
- Durable metal shell design
- Integral strain relief available
- Precision formed contacts
- Variety of Mating and mounting options

MATING CONNECTORS:

Adam Tech D-Subminiatures and all industry standard D-Subminiature connectors.

SPECIFICATIONS:

Material:

Insulator: PBT, 30% glass reinforced, rated UL94V-0
Insulator Colors: Black (Blue optional)
Contacts: Phosphor Bronze
Shell: Steel, Tin or Zinc plated
Hardware: Brass, Nickel plated

Contact Plating:

Gold Flash (15 and 30 μm Optional) over Nickel underplate, Nickel over copper underplate on IDC area

Electrical:

Operating voltage: 250V AC / DC max.
Current rating: 5 Amps max.
Contact resistance: 20 m Ω max. initial
Insulation resistance: 5000 M Ω min.
Dielectric withstanding voltage: 1000V AC for 1 minute

Mechanical:

Insertion force: 0.75 lbs max
Extraction force: 0.44 lbs min
Recommended cable size: 28 to 30 Awg.

Temperature Rating:

Operating temperature: -65°C to +125°C

PACKAGING:

Anti-ESD plastic trays

APPROVALS AND CERTIFICATIONS:

UL Recognized File No. E224053
CSA Certified File No. LR1578596



ORDERING INFORMATION



SHELL SIZE/ POSITIONS

DE09 = 9 Position
DA15 = 15 Position
DB25 = 25 Position
DC37 = 37 Position
DD50 = 50 Position

CONTACT TYPE

PF = Plug, IDC
SF = Socket, IDC

MOUNTING OPTIONS

1 = .130" mounting holes
2 = #4-40 threaded
flush inserts
(Metal Shell only)

BODY CONSTRUCTION

M = Metal shell
P = All plastic body

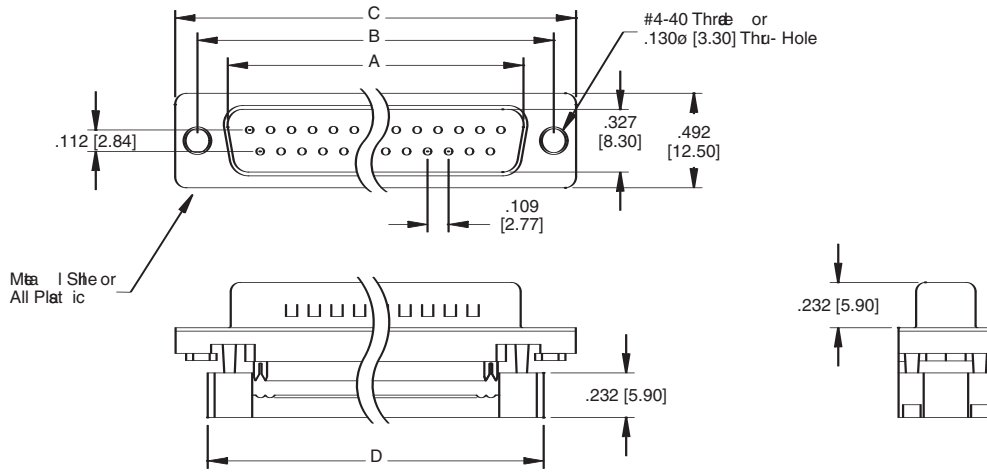
Strain Relief

Part No.:
DSR - xx
(xx = No. of Positions)

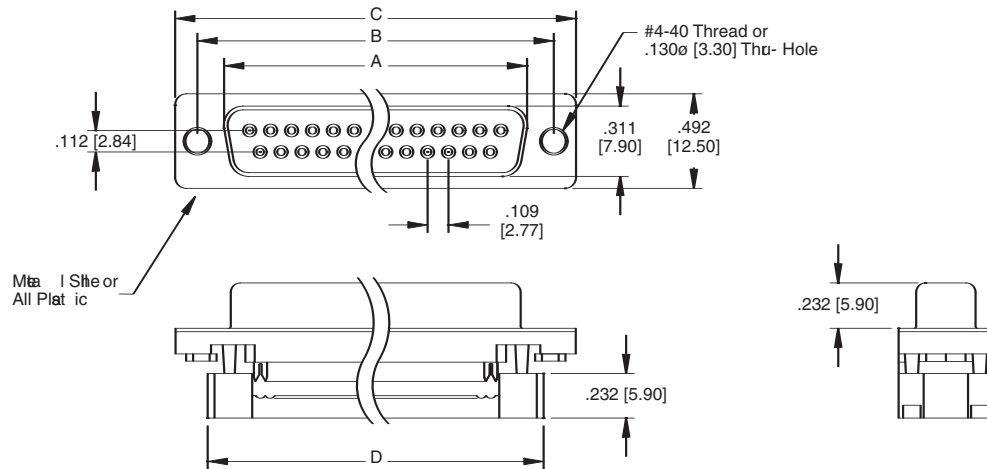
OPTIONS:

Add designator(s) to end of part number
15 = 15 μm . gold in contact area
30 = 30 μm . gold in contact area
BU = Blue color insulator

PLUG



SOCKET



Unit: Inch [mm]

Positions	PLUG	SOCKET	DIMENSIONS		
	A	A	B	C	D
9	.666 [16.92]	.643 [16.33]	.984 [24.99]	1.213 [30.81]	.883 [22.44]
15	.994 [25.25]	.971 [24.66]	1.312 [33.32]	1.541 [39.14]	1.213 [30.81]
25	1.534 [38.96]	1.511 [38.38]	1.852 [47.04]	2.088 [53.04]	1.755 [44.57]
37	2.182 [55.43]	2.159 [54.84]	2.500 [63.50]	2.729 [69.32]	2.414 [61.32]