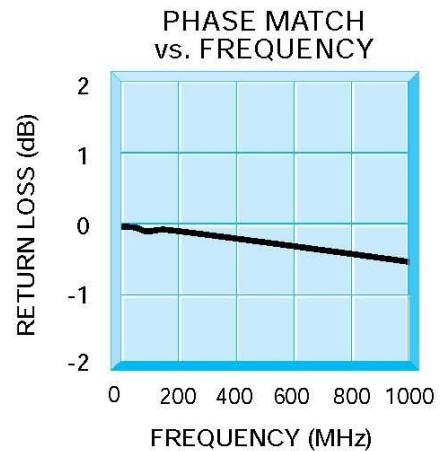
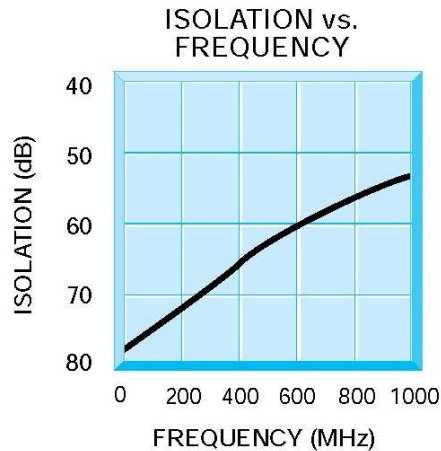
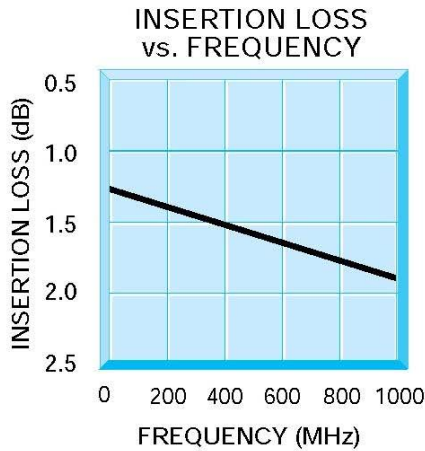


ISLT-51000

Phase Matched SPDT Switch

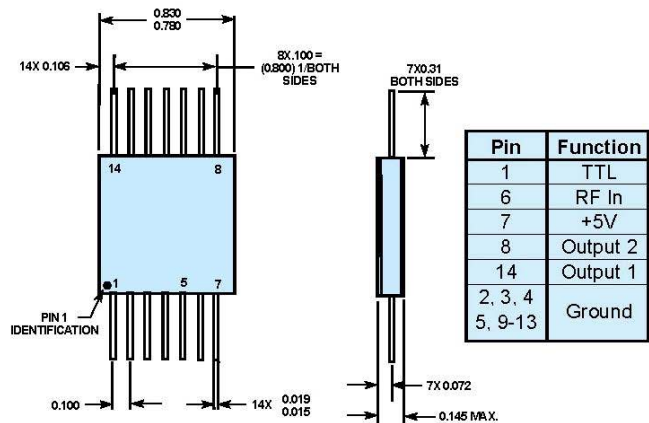


Guaranteed Specifications (-54° to +85°C)

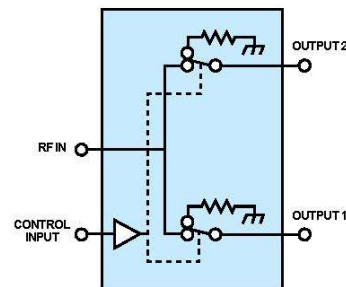
Frequency Range	5 to 1000 MHz
Insertion Loss	2.0 dB Max.
Isolation	
5 to 500 MHz	50 dB Min.
5 to 1000 MHz	45 dB Min.
VSWR	1.3:1 Max.
Phase Matching	
Output 1 to Output 2	1.0° Max.
Unit to Unit ¹	1.5° Max.
Rise Time (10% to 90%)	2ns Max.
Fall Time (90% to 10%)	5ns Max.
t _{on} to t _{off}	
(50% Control to 90% RF)	18ns Max.
(50% Control to 10% RF)	50ns Max.
1 dB Compression Point (Input)	+26 dBm Typ.
Input Power	+5 VDC @ 10 mA Max.

Note 1: Each unit to each unit.

Mechanical Outline



Functional Schematic



STC Microwave Systems – www.cranae.com
 28 Tozer Road • Beverly, MA 01915
 phone: 978-524-7200 • email: electronics@cranae.com

Revision ISI T-51000 2005 08252005

STC MICROWAVE SYSTEMS - OLEKTRON
 A CRANE CO. COMPANY

