

# Plug-In RF Transformer

50Ω 0.03 to 75 MHz

## T16-6T-X65+ T16-6T-X65



CASE STYLE: X65  
PRICE: \$5.65 ea. QTY (1-9)

**+ RoHS compliant in accordance  
with EU Directive (2002/95/EC)**

*The +Suffix identifies RoHS Compliance. See our web site  
for RoHS Compliance methodologies and qualifications.*

### Maximum Ratings

Operating Temperature	-20°C to 85°C
Storage Temperature	-55°C to 100°C
RF Power	0.25W
DC Current	30mA

### Pin Connections

PRIMARY DOT	4
PRIMARY	6
SECONDARY DOT	3
SECONDARY	1
SECONDARY CT	2
NOT USED	5

### Features

- good return loss
- also available with flat-pack (W38)  
& surface mount gull-wing (KK81) leads

### Applications

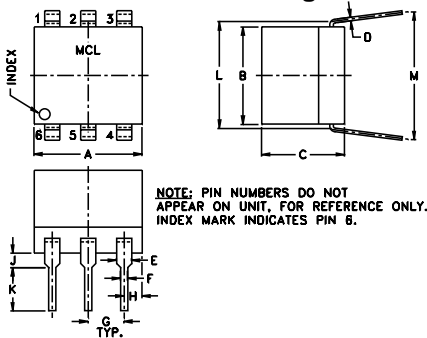
- HF/VHF systems
- impedance matching

### Transformer Electrical Specifications

Ω RATIO	FREQUENCY (MHz)	INSERTION LOSS*		
		3 dB MHz	2 dB MHz	1 dB MHz
16	0.03-75	0.03-75	0.06-30	0.1-20

\*Insertion Loss is referenced to mid-band loss, 0.5 dB typ.

### Outline Drawing



### Outline Dimensions (inch)

A	B	C	D	E	F	G
.30	.27	.23	.010	.042	.020	.100
7.62	6.86	5.84	0.25	1.07	0.51	2.54

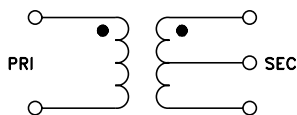
  

H	J	K	L	M	wt
.05	.04	.11	.300	.35	grams
1.27	1.02	2.79	7.62	8.89	0.50

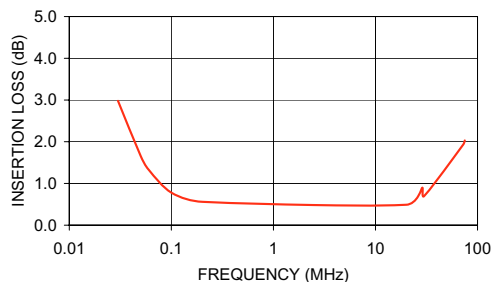
### Typical Performance Data

FREQUENCY (MHz)	INSERTION LOSS (dB)	INPUT R. LOSS (dB)
0.03	2.98	1.55
0.05	1.66	3.37
0.06	1.33	4.30
0.10	0.78	7.70
0.20	0.56	12.89
20.00	0.49	1.81
28.74	0.90	6.92
30.00	0.70	8.64
72.34	1.93	3.49
75.00	2.03	3.32

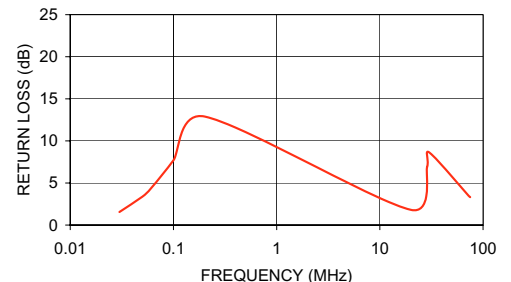
### Config. A



T16-6T-X65  
INSERTION LOSS



T16-6T-X65  
INPUT RETURN LOSS



**Mini-Circuits®**  
ISO 9001 ISO 14001 CERTIFIED

ALL NEW  
minicircuits.com

P.O. Box 350166, Brooklyn, New York 11235-0003 (718) 934-4500 Fax (718) 332-4661 For detailed performance specs & shopping online see Mini-Circuits web site



The Design Engineers Search Engine Provides ACTUAL Data Instantly From MINI-CIRCUITS At: [www.minicircuits.com](http://www.minicircuits.com)

RF/IF MICROWAVE COMPONENTS

REV. A  
M98898  
T16-6T-X65  
IG/TD/CP  
070803