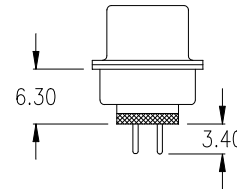


FERRITE SPECIFICATION

No of Contact	Measured Value(OHM)	Test Frequency	Ferrite thickness
009	20 min. 40 min.	25 MHz 100 MHz	1.20mm
015	15 min. 35 min.	25 MHz 100 MHz	
025	15 min. 40 min.	25 MHz 100 MHz	
037	20 min. 50 min.	25 MHz 100 MHz	



**Ordering Code**

**SDM - xxx - S111 - 95 / F XXX**

No. of contacts

Option

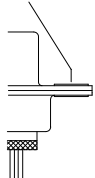
Plating: -95 = tin(leadfree)/gold

General Specification page 72

No. of contacts	Dimension		
	A	B	C
<b>009</b>	<u>30.81</u> 1.213	<u>24.99</u> .984	<u>16.92</u> .666
<b>015</b>	<u>39.14</u> 1.541	<u>33.32</u> 1.312	<u>25.25</u> .994
<b>025</b>	<u>53.04</u> 2.088	<u>47.04</u> 1.852	<u>38.96</u> 1.534
<b>037</b>	<u>69.32</u> 2.729	<u>63.50</u> 2.500	<u>55.42</u> 2.182

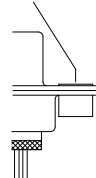
**Options**

mounting hole  
ø 3.05



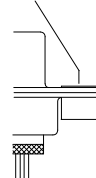
**T0**

thread rivet  
4-40 UNC



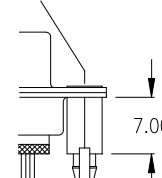
**T**

thread rivet  
4-40 UNC



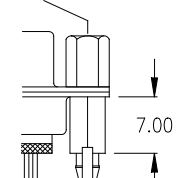
**TJ**

inside thread  
4-40 UNC



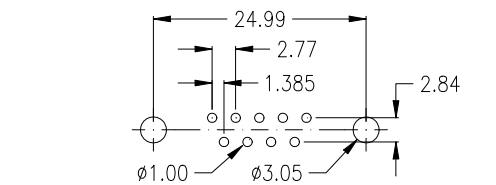
**BR**

Jack Screw  
4-40 UNC

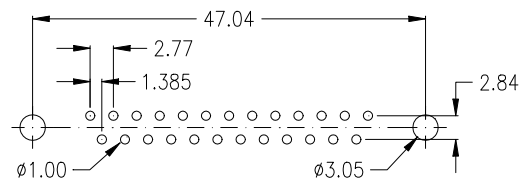


**BRJ**

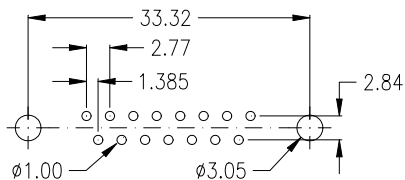
**PCB Layout „male“**



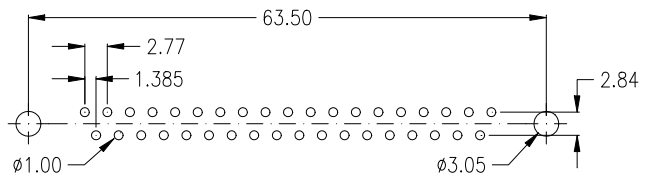
9 pin



25 pin



15 pin



37 pin