

## Non-Catalog Model

# Frequency Mixer

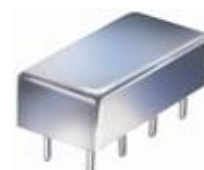
# SBL-2500H

Level 17 (LO Power +17 dBm)

### Important Note

This is a non-catalog model and can be manufactured on specific request.  
Pricing and delivery information can be supplied upon request.

Please click "Back", and then click "Contact Us" for Applications support.



**CASE STYLE : A06**

ELECTRICAL SPECIFICATIONS 50Ω @ +25°C					
Parameter		Min.	Typ.	Max.	Units
<b>Frequency</b>	<b>LO</b> (fL to fU)	5		2500	MHz
	<b>RF</b> (fL to fU)	5		2500	MHz
	<b>IF</b>	1		1000	MHz
<b>Conversion Loss</b>	<b>mid band</b>		5.5	7.5	dB
	<b>Total Range</b>			10.5	dB
<b>LO-RF Isolation</b>	<b>Low Range</b>	35	46		dB
	<b>Mid Range</b>	30	44		dB
	<b>Upper Range</b>	25	35		dB
<b>LO-IF Isolation</b>	<b>Low Range</b>	35	50		dB
	<b>Mid Range</b>	27	44		dB
	<b>Upper Range</b>	19	32		dB
<b>IP3 Input</b>		+27.5	+30		dBm
<b>1 dB Comp. Input Power</b>			+10		dBm

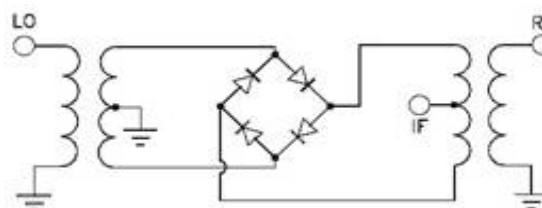
**Notes:** Low Range = [fL to 10fL]      Mid Range = [10fL to fU/2]      Upper Range = [fU/2 to fU]  
 mid band = [2fL to fU/2]

IP3 : RF Power = 0 dBm @ 200 MHz & 202 MHz , LO Power = +17 dBm @ 180 MHz

Non-hermetic

MAXIMUM RATINGS	
<b>Operating Temperature</b>	-55°C to 100°C
<b>Storage Temperature</b>	-55°C to 100°C
<b>RF Power</b>	200mW
<b>IF Current</b>	40mA

### Electrical Schematics



PIN CONNECTIONS	
<b>LO</b>	8
<b>RF</b>	1
<b>IF</b>	3, 4 ^
<b>GROUND</b>	2, 5, 6, 7

^ - pins must be connected together externally