

Coaxial Low Pass Filter

SBLP-300+ SBLP-300

50Ω Flat Time Delay DC to 180 MHz

Maximum Ratings

Operating Temperature	-55°C to 100°C
Storage Temperature	-55°C to 100°C
RF Power Input	0.5W max.

Features

- flat group delay for low pulse distortion
- rugged shielded case
- other SBLP models available with wide selection of cut-off frequencies

Applications

- linear modulation techniques
- voice transmission applications
- digital communications



CASE STYLE: FF99			
Connectors	Model	Price	Qty.
SMA	SBLP-300(+)	\$38.95 ea.	(1-9)

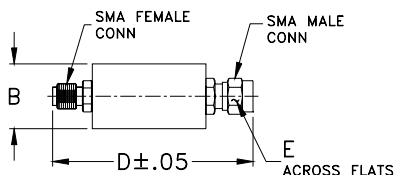
+ RoHS compliant in accordance with EU Directive (2002/95/EC)

The +Suffix identifies RoHS Compliance. See our web site for RoHS Compliance methodologies and qualifications.

Low Pass Filter Electrical Specifications

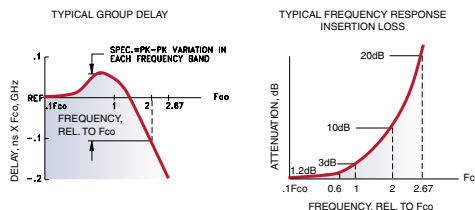
PASSBAND (MHz)	fco, MHz Nom.	STOPBAND (MHz)		VSWR (:1)		GROUP DELAY VARIATION (nsec)		
		(loss > 10 dB)	(loss > 20 dB)	DC-0.2fco	DC-0.6fco	DC-fco	DC-2fco	DC-2.67fco
(loss < 1.2 dB) Min.	(loss 3 dB)			\bar{X}	\bar{X}	\bar{X}	\bar{X}	\bar{X}
DC-180	300	600-801	801	1.25:1	2.2:1	0.2	0.6	0.8

Outline Drawing

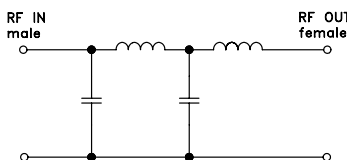


Outline Dimensions (inch/mm)

B	D	E	wt
.67	1.98	.312	grams
17.02	50.29	7.92	42.0

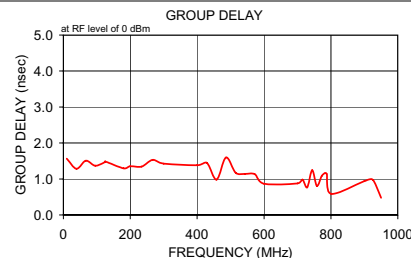
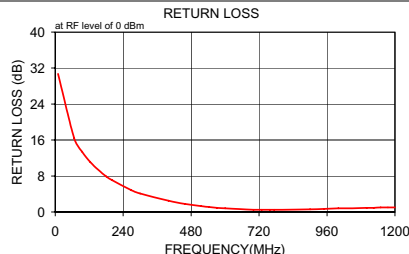


electrical schematic



Typical Performance Data

Frequency (MHz)	Insertion Loss (dB)		Return Loss (dB)	Frequency (MHz)	Group Delay (nsec)
	\bar{X}	σ			
10.0	0.16	0.2	30.7	10.0	1.563
67.0	0.27	0.2	16.4	39.0	1.282
95.0	0.37	0.1	13.4	67.0	1.509
124.0	0.53	0.1	11.1	95.0	1.368
152.0	0.73	0.1	9.4	124.0	1.468
180.0	0.99	0.1	7.9	152.0	1.487
200.0	1.24	0.1	7.1	180.0	1.297
267.0	2.35	0.2	4.9	200.0	1.351
300.0	3.06	0.2	4.1	234.0	1.343
400.0	5.85	0.2	2.5	267.0	1.534
458.0	7.82	0.2	1.8	300.0	1.427
515.0	9.91	0.3	1.3	400.0	1.383
543.0	11.02	0.4	1.1	429.0	1.448
572.0	12.18	0.4	0.9	458.0	0.984
600.0	13.35	0.5	0.8	486.0	1.599
700.0	17.70	0.5	0.5	515.0	1.173
729.0	18.96	0.6	0.5	543.0	1.140
758.0	20.25	0.6	0.5	572.0	1.134
773.0	20.92	0.6	0.5	600.0	0.869
787.0	21.51	0.6	0.5	700.0	0.878
801.0	22.10	0.6	0.5	715.0	0.983
900.0	26.28	0.7	0.6	729.0	0.767
950.0	28.25	0.7	0.7	744.0	1.244
1000.0	30.16	0.8	0.8	758.0	0.807
1050.0	32.02	0.9	0.8	773.0	1.089
1100.0	33.74	0.9	0.9	787.0	1.144
1125.0	34.62	1.1	0.9	801.0	0.587
1150.0	35.50	1.2	1.0	900.0	0.940
1175.0	36.29	1.2	1.0	925.0	0.980
1200.0	37.10	1.4	1.0	950.0	0.475



Mini-Circuits®
ISO 9001 ISO 14001 CERTIFIED

ALL NEW
minicircuits.com

P.O. Box 350166, Brooklyn, New York 11235-0003 (718) 934-4500 Fax (718) 332-4661 For detailed performance specs & shopping online see Mini-Circuits web site



The Design Engineers Search Engine Provides ACTUAL Data Instantly From MINI-CIRCUITS At: www.minicircuits.com

RF/IF MICROWAVE COMPONENTS

REV. A
M98898
SBLP-300
070411