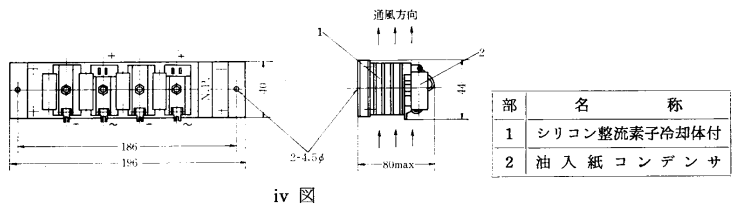
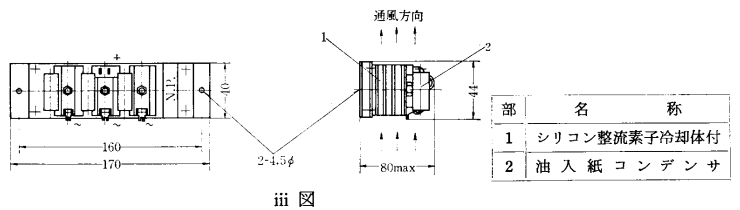
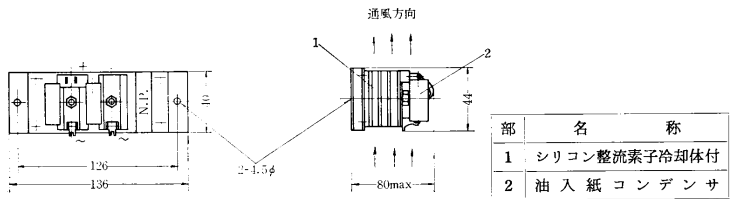
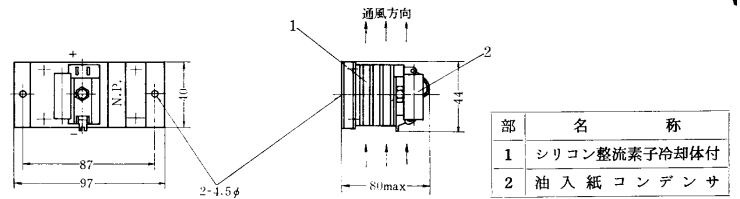
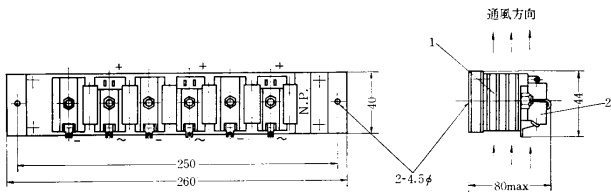


Si5 DS5 整流スタック

| 形式記号 | 整流素子の個数 | 定 格 | | | コンデンサ | | 重量 (kg) | 外形図 |
|----------------|---------|----------|----------|----------|--------------|------------|---------|-------|
| | | 交流電圧 (V) | 直流電流 (A) | 直流電圧 (V) | 容量 (μF) | 耐圧 (T. V.) | | |
| Si5-H1/1C | 1 | 380 | 2.5 | 170 | 0.025 | 2,000 | 1 | i 図 |
| DS5M-H1/1C | 1 | 250 | 2.5 | 110 | 0.025 | 2,000 | 1 | |
| DS5N-H1/1C | 1 | 125 | 2.5 | 55 | 0.025 | 800 | 1 | |
| DS5P-H1/1C | 1 | 75 | 2.5 | 33 | 0.025 | 400 | 1 | |
| Si5-C2/1C | 2 | 380 | 5 | 170 | 0.025 | 2,000 | 2 | ii 図 |
| DS5M-C2/1C | 2 | 250 | 5 | 110 | 0.025 | 2,000 | 2 | |
| DS5N-C2/1C | 2 | 125 | 5 | 55 | 0.025 | 800 | 2 | |
| DS5P-C2/1C | 2 | 75 | 5 | 33 | 0.025 | 400 | 2 | |
| Si5-S3/1C | 3 | 380 | 7.5 | 250 | 0.025 | 2,000 | 3 | iii 図 |
| DS5M-S3/1C | 3 | 250 | 7.5 | 165 | 0.025 | 2,000 | 3 | |
| DS5N-S3/1C | 3 | 125 | 7.5 | 83 | 0.025 | 800 | 3 | |
| DS5P-S3/1C | 3 | 75 | 7.5 | 50 | 0.025 | 400 | 3 | |
| Si5-B(O)4/1C | 4 | 380 | 5 | 340 | 0.05 (0.025) | 2,000 | 1 (4) | iv 図 |
| DS5M-B(O)4/1C | 4 | 250 | 5 | 220 | 0.05 (0.025) | 2,000 | 1 (4) | |
| DS5N-B(O)4/1C | 4 | 125 | 5 | 110 | 0.05 (0.025) | 800 | 1 (4) | |
| DS5P-B(O)4/1C | 4 | 75 | 5 | 65 | 0.05 (0.025) | 400 | 1 (4) | |
| Si5-T(O)6/1C | 6 | 380 | 7.5 | 505 | 0.05 (0.025) | 2,000 | 1 (6) | v 図 |
| DS5M-T(O)6/1C | 6 | 250 | 7.5 | 330 | 0.05 (0.025) | 2,000 | 1 (6) | |
| DS5N-T(O)6/1C | 6 | 125 | 7.5 | 165 | 0.05 (0.025) | 800 | 1 (6) | |
| DS5P-T(O)6/1C | 6 | 75 | 7.5 | 100 | 0.05 (0.025) | 400 | 1 (6) | |
| Si5-B(O)8/2C | 8 | 680 | 5 | 610 | 0.025 | 2,000 | 8 | vi 図 |
| DS5M-B(O)8/2C | 8 | 450 | 5 | 395 | 0.025 | 2,000 | 8 | |
| Si5-T(O)12/2C | 12 | 680 | 7.5 | 910 | 0.025 | 2,000 | 12 | vii 図 |
| DS5M-T(O)12/2C | 12 | 450 | 7.5 | 590 | 0.025 | 2,000 | 12 | |

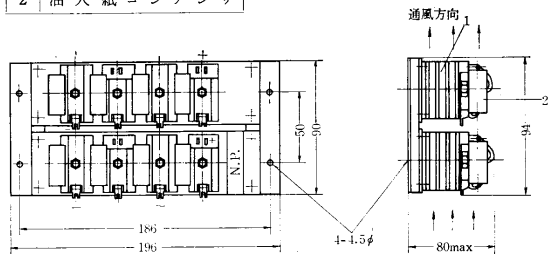


Si7 DS7 整流スタック



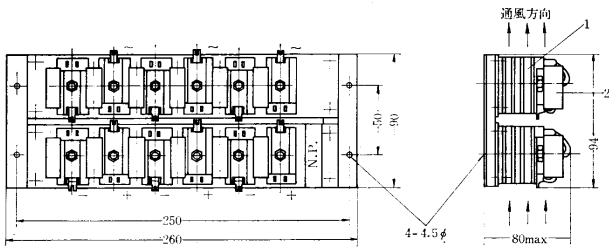
| 部 | 名 | 称 |
|---|--------------|---|
| 1 | シリコン整流素子冷却体付 | |
| 2 | 油入紙コンデンサ | |

v 図



| 部 | 名 | 称 |
|---|--------------|---|
| 1 | シリコン整流素子冷却体付 | |
| 2 | 油入紙コンデンサ | |

vi 図



| 部 | 名 | 称 |
|---|--------------|---|
| 1 | シリコン整流素子冷却体付 | |
| 2 | 油入紙コンデンサ | |

vii 図