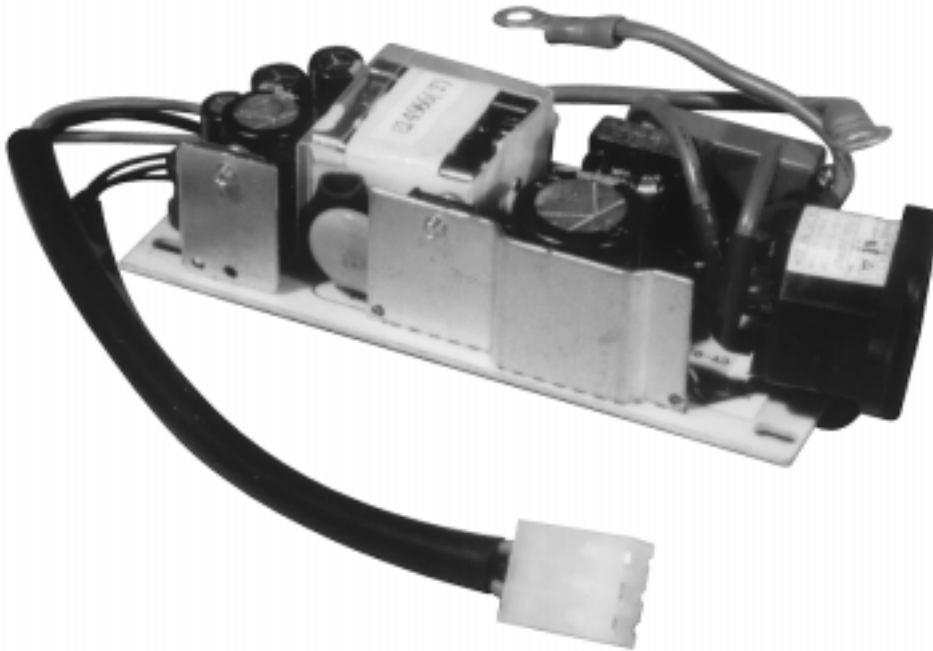


20W Mini Universal Series PSA-20A Dual Output Switcher



G
N
O
T
H
I
S

Features

- Integral AC Connector
- 2x4 inch Footprint
- Built-In EMI Filter
- DC Cord & Connector

Applications

- Portable Devices
- Microprocessor Systems
- Low Profile Racks
- CD ROM Drives

Safety Approvals

- UL1950 [E127643]
- CSA 22.2 234 [LR56927-144]
- TUV IEC 950, EN60950 [R9552260]

Mechanical Characteristics

- Dimensions:
- Length: 101.6mm (4in)
 - Width: 51.3mm (2in)
 - Height: 25mm (1in)
 - Weight: 130gm (4.6oz)

Output Specifications

Model	DC Output Voltage	Load		Ripple (1) P-P	Regulation (2)	
		Min.	Max.		Line	Load
PSA-20A	5V	0.2A	1.5A	50mV	+2%	+5%
	12V	0A	1.0A	120mV	+2%	+10%

(1) Measured at 10W by using a 12 inch twisted pair terminated with a 10mfd capacitor and a 0.1mfd ceramic in parallel.

ISO 9001 • BABT
Facility Approvals



ENTERPRISE CO., LTD.

16, Lane 530, Chung Cheng N. Rd.
Sanchung City, Taipei
Taiwan 24103, R.O.C.
Phone: 886-2-988-2126
886-2-980-5255
Fax: 886-2-981-7086
886-2-983-3222

PHIHONG USA

Western Office:
48607 Warm Springs Blvd.
Fremont, CA 94539
Phone: (510) 445-0100
Fax: (510) 445-1678
Email: usasales@phihongusa.com
Internet: <http://www.phihongusa.com>

Eastern Office:
3005 Brodhead Road
Bethlehem, PA 18017
Phone: (610) 866-9911
Fax: (610) 866-9920

Southwestern Office:
3325 Cochran St., Suite 200
Simi Valley, CA 93063
Phone: (805) 520-8177
Fax: (805) 520-3907

20W Mini Universal Series PSA-20A Dual Output Switcher

Characteristics

AC Input Voltage
85 to 264 VAC

AC Input Frequency
47 to 63Hz

AC Input Current
1Arms (120VAC)
2Arms (240VAC)

AC Inrush Current (Cold)
15A max. (120VAC)
30A Max. (240VAC)

Leakage Current
Less than 3.5ma (240VAC)

Efficiency
70% @ 20W (120VAC)

Hold-up Time
16msec, 16W (120VAC)

Switching Frequency
50KHz (typical)

Overcurrent Protection
>120%

Operation Temperature (Convection)
0 to 40°C, derated to 75% at 60°C

Storage Temperature/Humidity
-20 to +85°C
20 to 90% RH (Non-condensing)

MTBF
100,000 hrs. minimum
(full load, high line, 25°C)

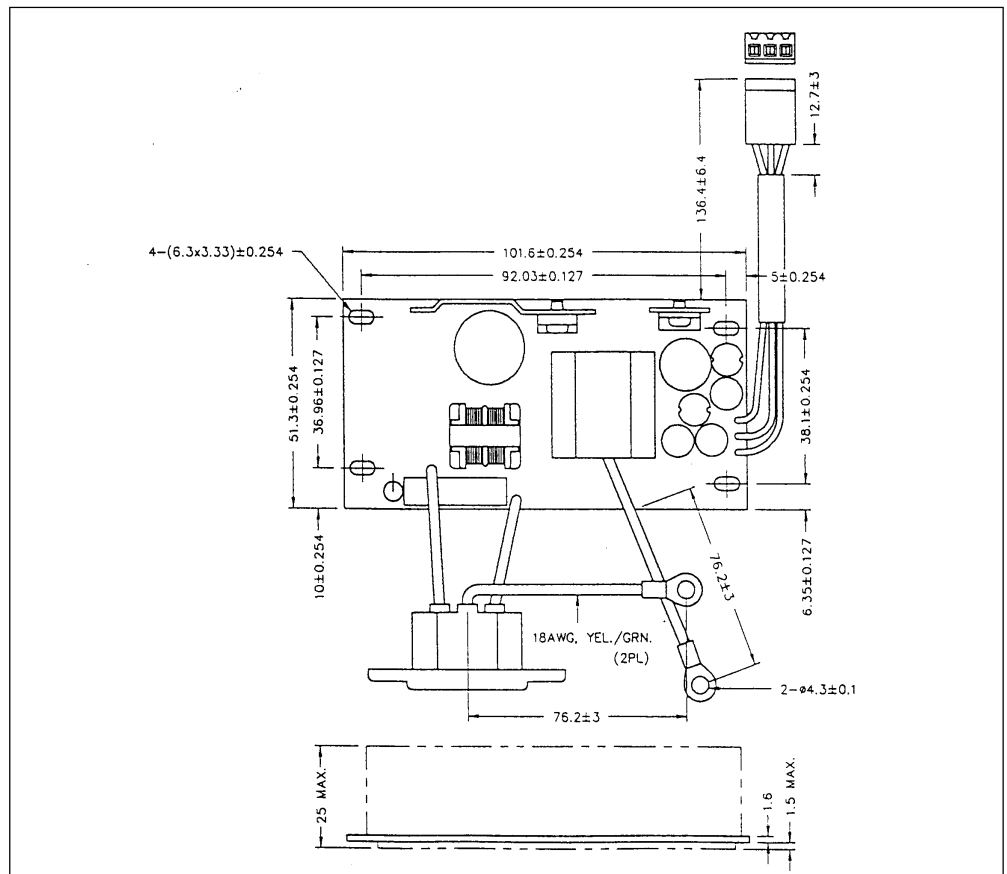
EMI
FCC Class B
IEC EN55022B
VFG243

AC Input Connector
IEC 320/13

Safety Ground Lugs (2)
#4 Hole, Molex AA-821-08T

DC Output Connector:
Molex 09-50-3031
Pin 1 - +12 (Blue)
Pin 2 - Return (Blk)
Pin 3 - +5 (Red)

Dimension Diagram Unit: mm (inch)



20A/701