

Features

- IEEE802.3af/ANSI X3.263
- RoHS compliant*

Applications

- VoIP
- PoE

SM51521L 10/100 Base Tx VoIP Modules (Power over Ethernet - PoE)

Electrical Specifications

DC Resistance Balance.....	≤ 3.5 %
Turns Ratio (TX/RX)	1CT: 1CT
Insertion Loss	
..... 1-100 MHz, -1.2 dB max.	
Return Loss (@ 100 ohms)	
1-30 MHz	-16 dB min.
40 MHz.....	-14 dB min.
50 MHz.....	-13 dB min.
60-80 MHz	-12 dB min.
Cross Talk	
60 MHz.....	-40 dB min.
100 MHz.....	-35 dB min.
DCMRR	
30 MHz.....	-43 dB min.
60 MHz.....	-37 dB min.
100 MHz.....	-33 dB min.
Isolation	1500 VAC
Operating Temperature	
.....	-40 °C to +85 °C

Packaging Specifications

Tape & Reel 400 pcs./reel

How To Order

Model SM51521E L P

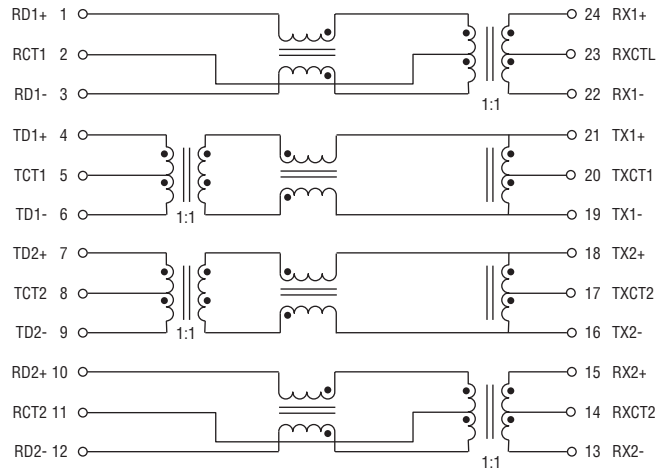
Termination _____

L = Tin only (lead free)

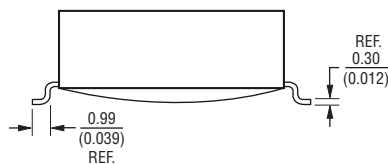
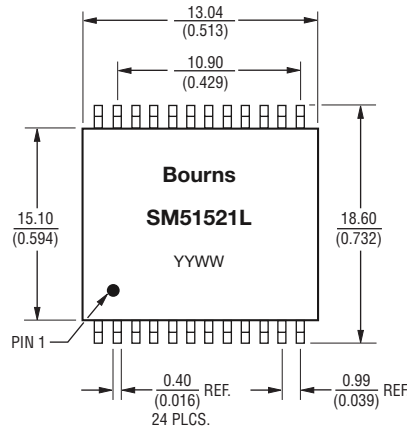
Coil Embedment _____

P = Potted

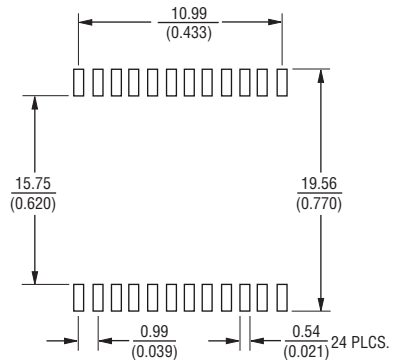
Electrical Schematic



Product Dimensions



Recommended Layout



DIMENSIONS: $\frac{\text{MM}}{\text{(INCHES)}}$

REV. 02/10

*RoHS Directive 2002/95/EC Jan 27 2003 including Annex.
Specifications are subject to change without notice.
Customers should verify actual device performance in their specific applications.