

# Rectangular photoelectric proximity switches



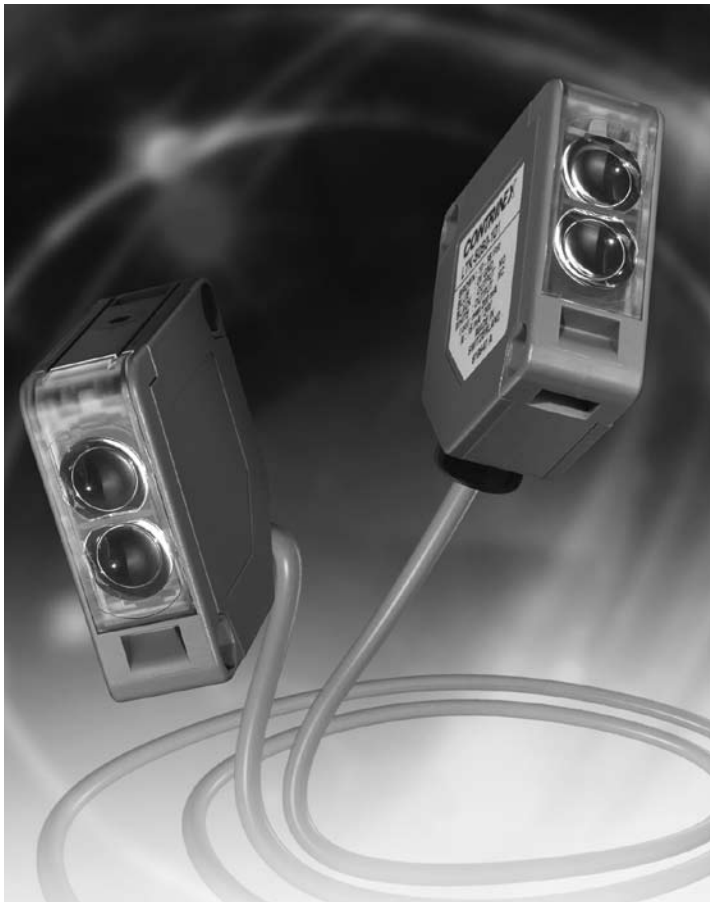
## Features

- Diffuse sensors with operating distance of 300 mm or 800 mm
- Through-beam sensors with operating distance of 15 or 50 m
- Reflex sensors with operating distance of 4 m
- High switching frequency of 1 kHz
- Supply voltage 10...36 VDC, output current 200 mA
- 2 built-in LEDs for output state and excess-gain indication
- Changeover or excess-gain outputs

## Benefits

- Top quality designed to cost
- Standard size of 50 x 50 x 18 mm

**CONTRINEX**

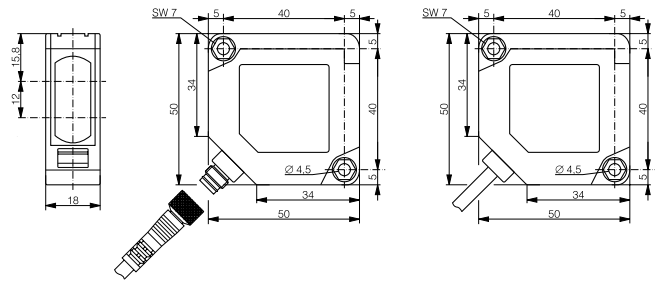


## □ 50x50

Diffuse sensors  
300 mm

## □ 50x50

Diffuse sensors  
800 mm



### Technical data:

(according to IEC 60947-5-2)

Rated operating distance  $s_n$

Emitter

Modulation frequency

Supply voltage range  $U_b$

Max. ripple content

Output current (sum)

Output voltage drop

No-load supply current

Leakage current

Switching frequency

Switching time

Time delay before availability

Sensitivity setting

Ambient temperature range

Short-circuit protection

Voltage reversal protection

Induction protection

Degree of protection

Housing material

Window material

Connection cable

Connector

**Types (bold: preferred types)**

NPN changeover outputs

NPN light-ON + excess gain

PNP changeover outputs

PNP light-ON + excess gain

Emitter

300 mm

800 mm

LED 648 nm (red)

15 kHz

10 ... 36 VDC

20% max.

200 mA max.

2.0 V at 200 mA

15 mA max.

0.1 mA max.

1 kHz

0.5 msec max.

50 msec

Potentiometer

-5 ... +55 °C (+23 ... +131 °F)

Built-in

Built-in

Built-in

IP 65

ABS

PMMA

PVC 4 x 0.25 mm<sup>2</sup> / 128 x 0.25 mm Ø; 2 m

S8 4p

**Part reference**

Cable

Connector

Cable

Connector

**LTK-5050-101-501**

**LTS-5050-101-501**

**LTK-5050-101**

**LTS-5050-101**

LTK-5050-102-501

LTS-5050-102-501

LTK-5050-102

LTS-5050-102

**LTK-5050-103-501**

**LTS-5050-103-501**

**LTK-5050-103**

**LTS-5050-103**

LTK-5050-104-501

LTS-5050-104-501

LTK-5050-104

LTS-5050-104

## □ 50x50

Reflex sensors  
4 m



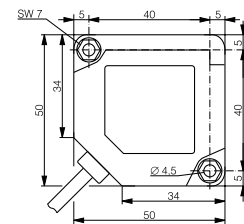
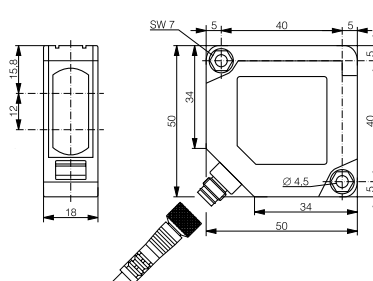
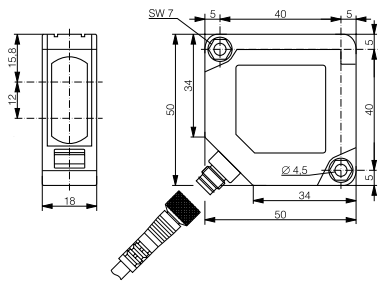
## □ 50x50

Through-beam sensors  
15 m



## □ 50x50

Through-beam sensors  
50 m



4 m

LED 660 nm (red)

15 kHz

10 ... 36 VDC

20% max.

200 mA max.

2.0 V at 200 mA

15 mA max.

0.1 mA max.

1 kHz

0.5 msec max.

50 msec

---

-5 ... +55 °C (+23 ... + 131 °F)

Built-in

Built-in

Built-in

IP 65

ABS

PMMA

PVC 4 x 0.25 mm<sup>2</sup> / 128 x 0.25 mm Ø; 2 m

S8 4p

Part reference

Cable

Connector

LRK-5050-101

LRS-5050-101

LRK-5050-102

LRS-5050-102

LRK-5050-103

LRS-5050-103

LRK-5050-104

LRS-5050-104

15 m

LED 647 nm (red)

15 kHz

10 ... 36 VDC

20% max.

200 mA max.

2.0 V at 200 mA

10 mA max.

0.1 mA max.

1 kHz

0.5 msec max.

50 msec

---

-5 ... +55 °C (+23 ... + 131 °F)

Built-in

Built-in

Built-in

IP 65

ABS

PMMA

PVC 4 x 0.25 mm<sup>2</sup> / 128 x 0.25 mm Ø; 2 m

S8 4p

Part reference

Cable

Connector

LLK-5050-001

LLS-5050-001

LLK-5050-002

LLS-5050-002

LLK-5050-003

LLS-5050-003

LLK-5050-004

LLS-5050-004

LLK-5050-000

LLS-5050-000

50 m

LED IR 880 nm

15 kHz

10 ... 36 VDC

20% max.

200 mA max.

2.0 V at 200 mA

10 mA max.

0.1 mA max.

1 kHz

0.5 msec max.

50 msec

---

-5 ... +55 °C (+23 ... + 131 °F)

Built-in

Built-in

Built-in

IP 65

ABS

PMMA

PVC 4 x 0.25 mm<sup>2</sup> / 128 x 0.25 mm Ø; 2 m

S8 4p

Part reference

Cable

Connector

LLK-5050-001-502

LLS-5050-001-502

LLK-5050-002-502

LLS-5050-002-502

LLK-5050-003-502

LLS-5050-003-502

LLK-5050-004-502

LLS-5050-004-502

LLK-5050-000-502

LLS-5050-000-502

## Europe

Austria Belgium Croatia Czech Republic  
Denmark Finland France Germany Great Britain  
Greece Hungary Ireland Italy Luxembourg  
Netherlands Norway Poland Portugal Romania  
Slovakia Slovenia Spain Sweden Switzerland  
Turkey

## Africa

South Africa

## The Americas

Argentina Brazil Canada Chile Colombia Mexico  
United States Venezuela

## Asia

China India Indonesia Japan Korea Malaysia  
Pakistan Philippines Singapore Taiwan Thailand  
Vietnam

## Australasia

Australia New Zealand

## Middle East

Egypt Iran Israel Syria



## Contrinex

Contrinex has been manufacturing sensors for industrial use since 1972, and today employs over 400 people.

## Products

The strength of Contrinex lies in its wide range of highly innovative sensors with special characteristics:

- very small sizes
- very long operating distances
- resistance to extreme environmental conditions (extreme pressure, temperatures etc.)
- all-metal housings

## Quality

The high quality of Contrinex products is guaranteed by a well-organized ISO 9001:2000 certified management system.

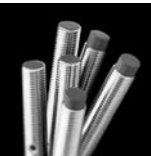
## Customer service

Thanks to a worldwide presence, Contrinex ensures easy contact between customers and the manufacturer.

## Catalog

Please consult our catalog for clear and precise information concerning Contrinex's wide range of products:

- [Inductive, Photoelectric and Ultrasonic Proximity Switches](#)



These devices **must not be used** in applications where the **safety of people** is dependent on their functioning. Terms of delivery and rights to change design reserved.

## Contrinex Inc.

2 Business Park Road - Old Saybrook, CT 06475 - USA

Tel.: 860 388 3573 - Toll free: 866 289 2899 - Fax: 860 388 3574

Internet: [www.contrinex.com](http://www.contrinex.com) - E-mail: [info\\_us@contrinex.com](mailto:info_us@contrinex.com)

Your sales agent:

