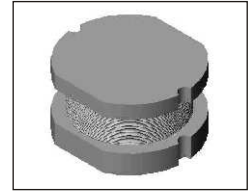


# SMT Power Inductor

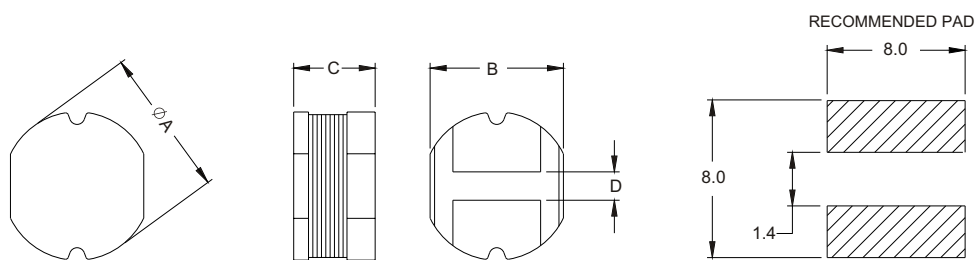
## SI84 Type

### Features

- Low profile (4.0mm max. Height) SMD type.
- Unshielded.
- Self-leads, suitable for high density mounting.
- High energy storage and low DCR.
- Provided with embossed carrier tape packing.
- Ideal for power source circuits, DC-DC converter, DC-AC inverters inductor application.
- In addition to the standard versions shown here, customized inductors are available to meet your exact requirements.



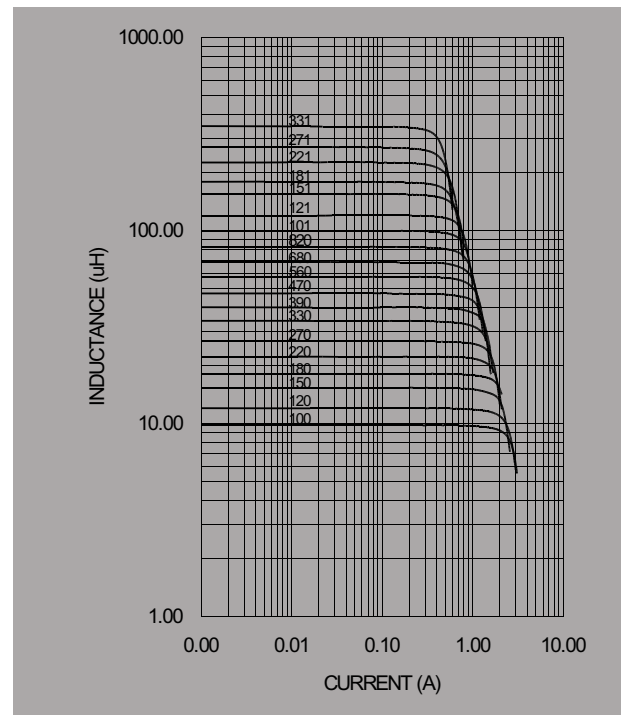
### Mechanical Dimension:



UNIT:mm/inch  
 A = 7.8±0.2/0.307±0.008  
 B = 7.0±0.2/0.276±0.008  
 C = 3.5±0.5/0.138±0.020  
 D = 1.5±0.2/0.059±0.008

### Electrical Characteristics: At 25°C: 1KHz, 1V

| PART NO.   | L <sup>1</sup><br>(uH) | DCR<br>(Ω) MAX | I <sup>2</sup> <sub>RATED</sub><br>(A <sup>2</sup> ) |
|------------|------------------------|----------------|--|
| SI84 - 100 | 10                     | 0.080          | 1.44   |
| SI84 - 120 | 12                     | 0.089          | 1.39   |
| SI84 - 150 | 15                     | 0.104          | 1.24   |
| SI84 - 180 | 18                     | 0.111          | 1.12   |
| SI84 - 220 | 22                     | 0.129          | 1.07   |
| SI84 - 270 | 27                     | 0.153          | 0.94   |
| SI84 - 330 | 33                     | 0.170          | 0.85   |
| SI84 - 390 | 39                     | 0.217          | 0.74   |
| SI84 - 470 | 47                     | 0.252          | 0.68   |
| SI84 - 560 | 56                     | 0.282          | 0.64   |
| SI84 - 680 | 68                     | 0.332          | 0.59   |
| SI84 - 820 | 82                     | 0.406          | 0.54   |
| SI84 - 101 | 100                    | 0.481          | 0.51   |
| SI84 - 121 | 120                    | 0.536          | 0.49   |
| SI84 - 151 | 150                    | 0.755          | 0.40   |
| SI84 - 181 | 180                    | 1.022          | 0.36   |
| SI84 - 221 | 220                    | 1.200          | 0.31   |
| SI84 - 271 | 270                    | 1.306          | 0.29   |
| SI84 - 331 | 330                    | 1.495          | 0.28   |



1. Tolerance of inductance  
10~330uH±10%
2. I<sub>RATED</sub>: rated current. ΔL<10%, ΔT<45°C at I<sub>RATED</sub>
3. Operating temperature: -20°C to 105°C (including self-temperature rise)



**DELTA ELECTRONICS, INC.**

(TAOYUAN PLANT CPBG) 252, SAN YING ROAD, KUEISAN INDUSTRIAL ZONE, TAOYUAN SHIEN, 333, TAIWAN, R.O.C.

TEL: 886-3-3591968; FAX: 886-3-3591991

<http://www.deltaww.com>