

## Features

### Regulated Converters

- World's Most Compact High Voltage Power Supplies
- Full SMD-Design with Ceramic Capacitors for Highest Reliability
- Positive or Negative Polarity Models
- Shielded Metal Case
- Low Ripple & Temperature Coefficient
- Remote Voltage Programming 0 to 100%
- Continuous Short Circuit Protection
- 2-Year Product Warranty
- Input Voltage Special Request
- Efficiency to 65%

**INNOLINE**  
DC/DC-Converter

## Rxx-S Series

**2 ~ 2.5 Watt  
Single  
Output**

### Selection Guide

Part Number	Input Range (VDC)	Output Voltage (VDC)	Output Current (mA)
R12-180 S 15 P	12 ( 10.8 – 13.2 )	0...+180	15
R12-300 S 10 P	12 ( 10.8 – 13.2 )	0...+300	10
R12-350 S 07 P	12 ( 10.8 – 13.2 )	0...+350	7
R24-180 S 15 P	24 ( 21.6 – 26.4 )	0...+180	15
R24-300 S 10 P	24 ( 21.6 – 26.4 )	0...+300	10
R24-350 S 07 P	24 ( 21.6 – 26.4 )	0...+350	7
R12-180 S 15 N	12 ( 10.8 – 13.2 )	0...-180	15
R12-300 S 10 N	12 ( 10.8 – 13.2 )	0...-300	10
R12-350 S 07 N	12 ( 10.8 – 13.2 )	0...-350	7
R24-180 S 15 N	24 ( 21.6 – 26.4 )	0...-180	15
R24-300 S 10 N	24 ( 21.6 – 26.4 )	0...-300	10
R24-350 S 07 N	24 ( 21.6 – 26.4 )	0...-350	7



**RECOM**

### Notes:

1. Adjustable with external voltage 0 to +4VDC or with 5k. variable resistor. See below for details.
2. "N" for Negative.
3. "P" for Positive.

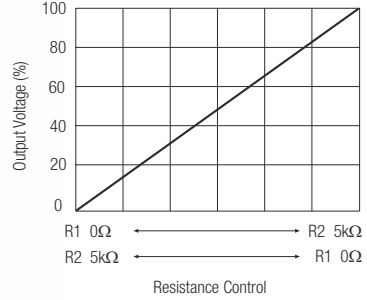
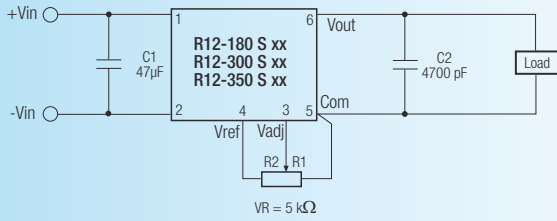
### Specifications

( typical at 25°C, nominal input voltage, rated output current unless otherwise specified )

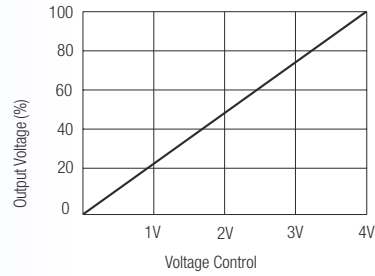
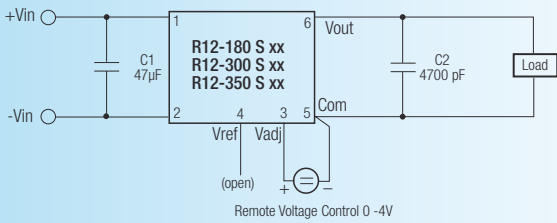
Output Voltage Accuracy	±5%
Rated Power	2 ~ 2.5 Wat max.
Voltage Adjustment Range ( see note 1 )	0-100%
Line Voltage Regulation	±0.03%
Load Voltage Regulation ( 0% to 100% full load )	±0.08%
Output Ripple and Noise (20MHz limited)	30mVp-p max.
Efficiency at Full Load	60 ~ 65%
Operating Temperature Range (free air convection)	-10°C to +60°C
Storage Temperature Range	-25°C to +85°C
Package Weight	46g

**Connection Diagram**

For remote control by variable resistor

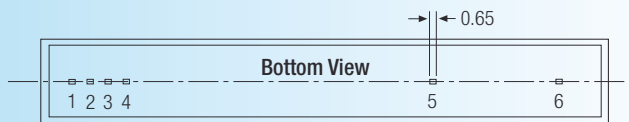
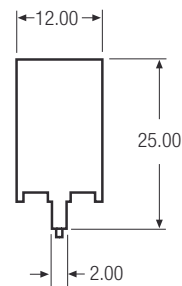
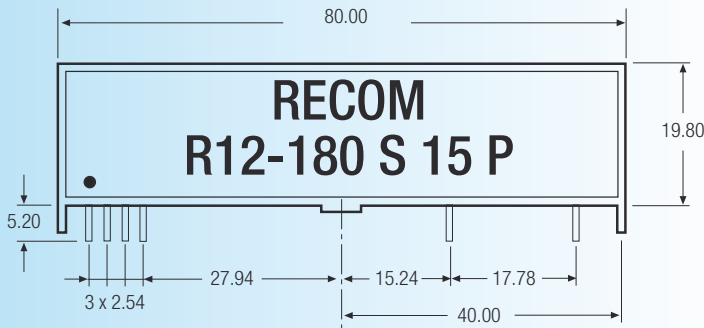


For remote voltage control



**Package Style and Pinning**

3rd angle projection



**Pin Connections**

Pin #	Out
1	+Vin
2	-Vin
3	V adj.
4	V ref.
5	-Vout
6	+Vout

XX.X ± 0.5 mm  
XX.XX ± 0.25 mm