

Silicon Double Balanced HMIC™ Mixer, 1700 - 2200 MHz

**MA4EXP190H-1277T
V2**

Features

- + 33 dBm Typical Input IP3
- 8.3 dB Typical Conversion Loss
- + 17 to + 19 dBm LO Drive
- Fully Balanced Passive Mixer
- NO External Matching Required
- Low Cost Miniature Plastic MLP Package

Description and Applications

M/A-COM's MA4EXP190H-1277T is a silicon monolithic 1700-2200 MHz, high barrier, double balanced mixer in a low cost, miniature surface mount FQFP-N 3mm Square, 16 lead plastic package. The die uses M/A-COM's unique HMIC silicon/glass process to realize low loss passive elements while retaining the advantages of high barrier silicon Schottky barrier diodes to produce a compact device.

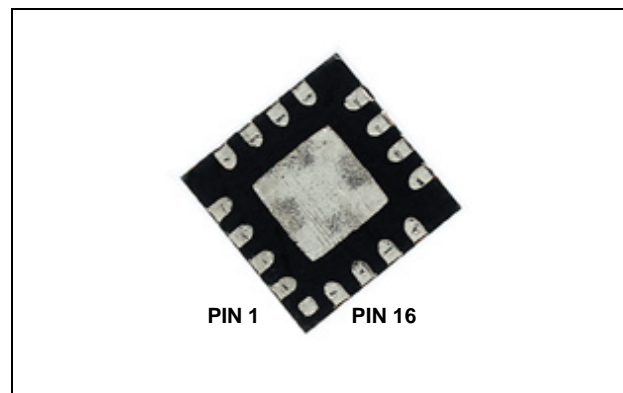
These mixers are well suited for GSM, DCS, PCS, CDMA and UMTS base station applications where small size and high performance are required. Typical applications include frequency conversion, modulation, and demodulation in wireless receivers and transmitters.

Absolute Maximum Ratings¹

Parameter	Maximum Ratings
Operating Temperature	-40 °C to +85 °C
Storage Temperature	-65 °C to +150 °C
Incident LO Power	+20 dBm C.W.
Incident RF Power	+20 dBm C.W.

1. Exceeding these limits may cause permanent damage.

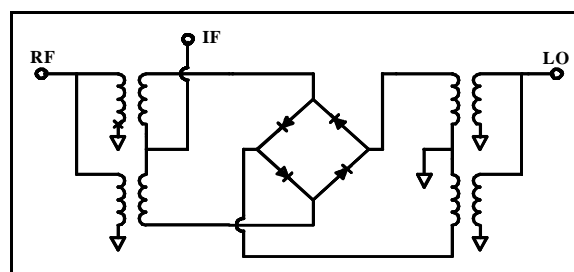
**MLP 3mm Package
(Circuit Side View)**



PIN Configuration

PIN	Function	PIN	Function
1	N/C	9	N/C
2	N/C	10	RF
3	LO	11	N/C
4	N/C	12	N/C
5	N/C	13	N/C
6	N/C	14	IF
7	N/C	15	N/C
8	N/C	16	N/C

Functional Schematic



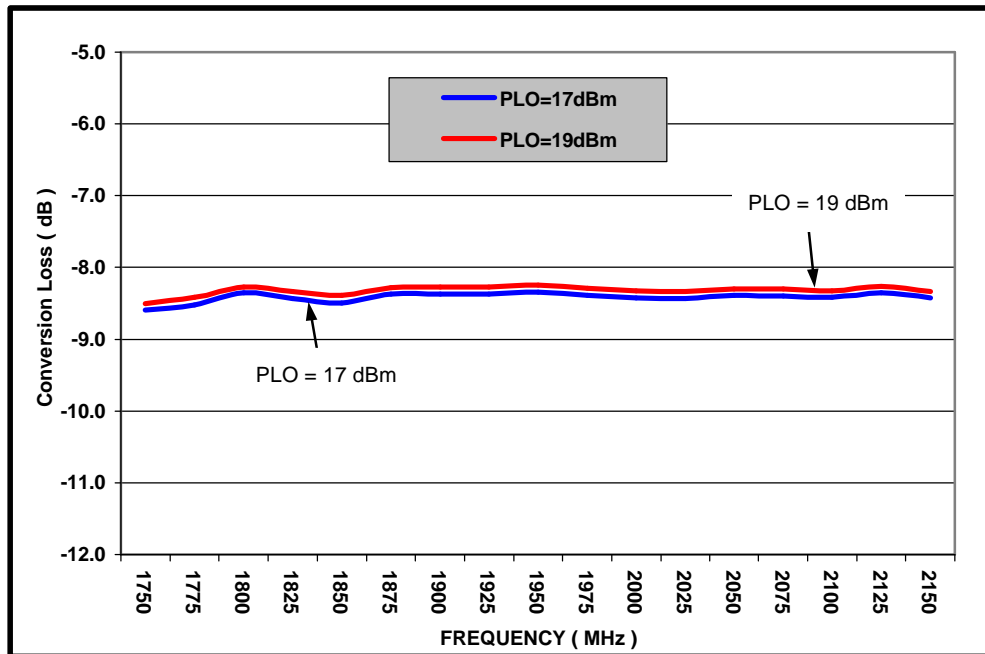
M/A-COM Inc. and its affiliates reserve the right to make changes to the product(s) or information contained herein without notice. M/A-COM makes no warranty, representation or guarantee regarding the suitability of its products for any particular purpose, nor does M/A-COM assume any liability whatsoever arising out of the use or application of any product(s) or information.

Electrical Specifications @ +25 °C

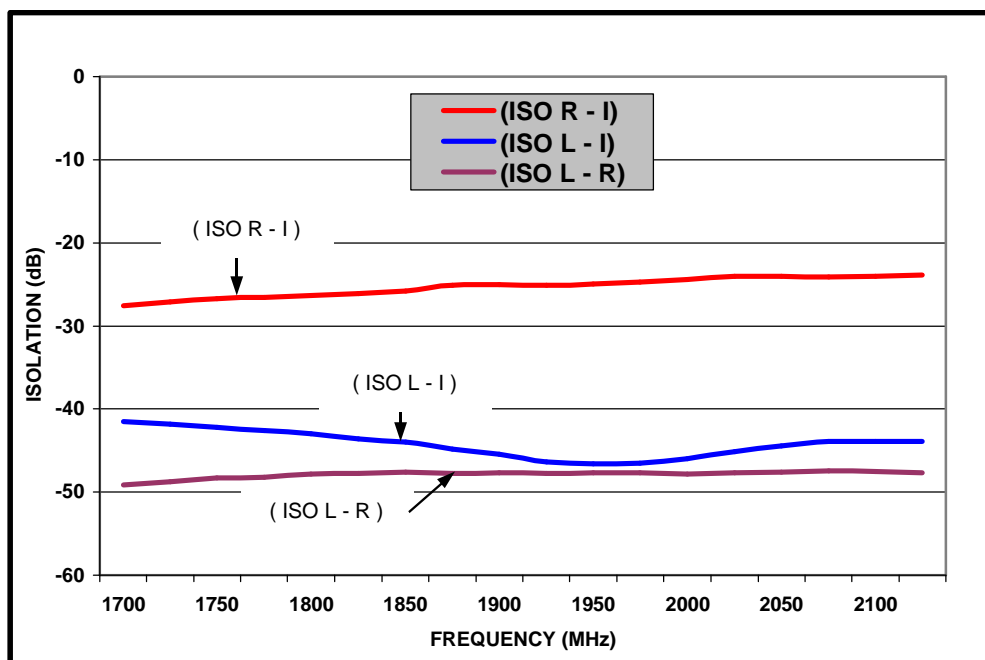
Parameter	Frequency Range	Test Conditions	Units	Min.	Avg.	Max.
Conversion Loss	1925 MHz 1700-2200 MHz	LO Drive = +19 dBm RF = -10 dBm, IF = 60 MHz	dB	- -	8.3 8.4	9.5 9.5
L - R Isolation	1925 MHz 1700-2200 MHz	LO Drive = +17 dBm RF Level = -10 dBm	dB	- -	48.0 48.0	- -
L - I Isolation	1925 MHz 1700-2200 MHz	LO Drive = +17 dBm RF Level = -10 dBm	dB	- -	46.0 44.0	- -
R - I Isolation	1925 MHz 1700-2200 MHz	LO Drive = +17 dBm RF Level = -10 dBm	dB	- -	25.0 25.0	- -
RF VSWR	1925 MHz 1700-2200 MHz	LO Drive = +17 dBm RF Level = -10 dBm	Ratio	- -	1.1:1 1.3:1	- -
IF VSWR	DC - 500 MHz	LO Drive = +17 dBm RF Level = -10 dBm	Ratio	- -	1.6:1 -	- -
Input IP3	1925 MHz 1700-2200 MHz	LO Drive = +19 dBm RF = -10 dBm, IF = 60 MHz	dBm	- -	34.0 32.0	- -
Input 1 dB Compression	1925 MHz 1700-2200 MHz	LO Drive = +17 dBm IF = 60 MHz	dBm	- -	11.3 11.2	- -
IF1 dB Bandwidth	DC-400 MHz	LO = 1850 MHz @ +17dBm	MHz	0	-	400

Typical Performance Curves (LO Drive = +17 dBm, RF = -10 dBm, IF = 60 MHz)

Conversion Loss

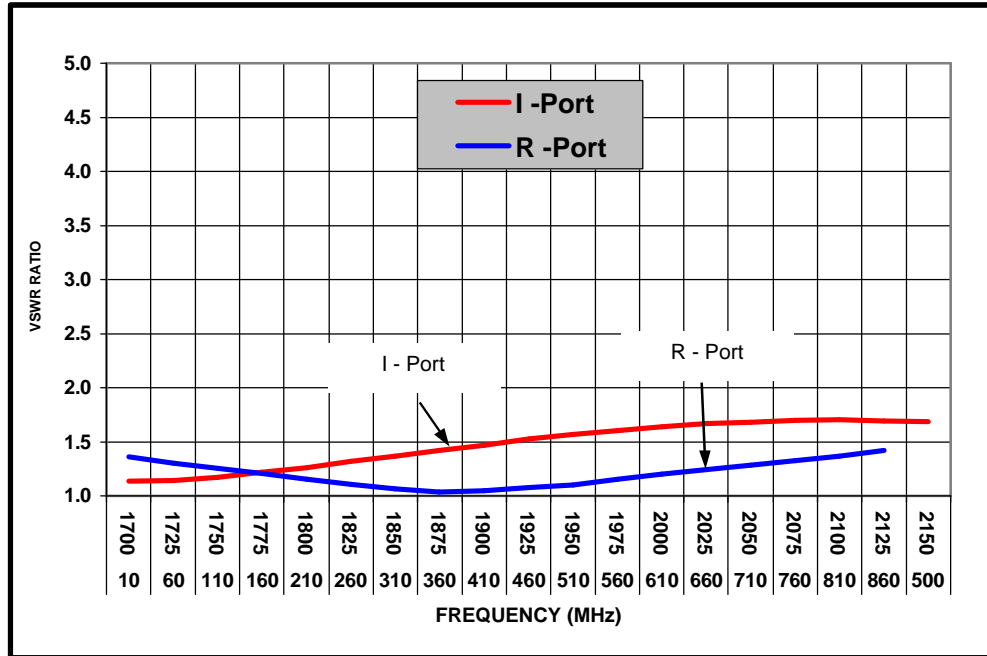


Isolation

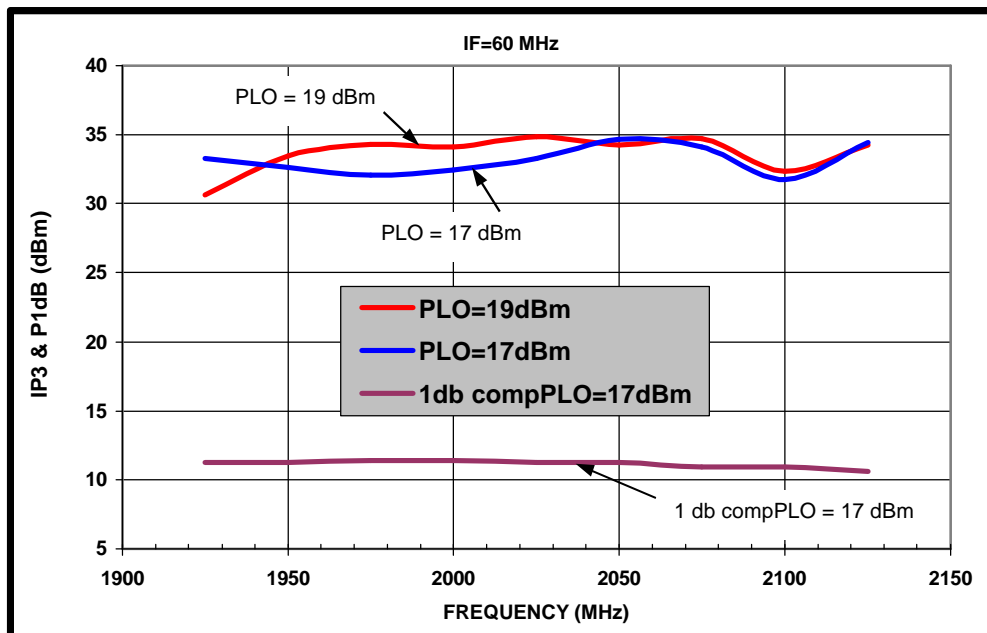


Typical Performance Curves (LO Drive = +17 dBm, RF = -10 dBm, IF = 60 MHz)

RF & IF VSWR

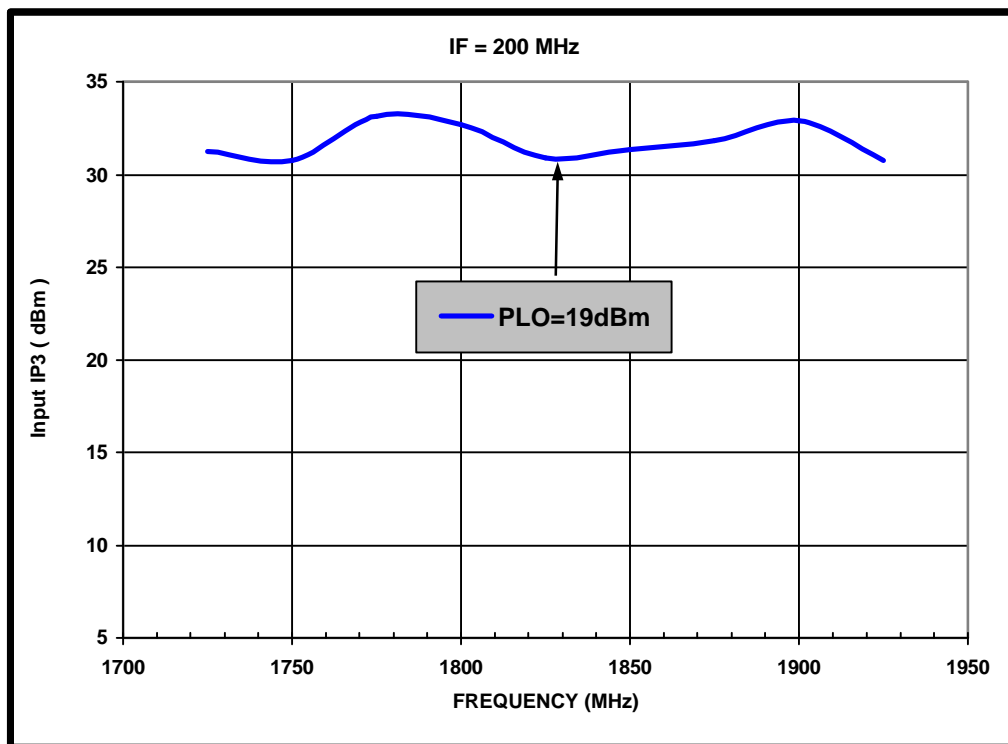


Input IP3 & 1dB Compression Power

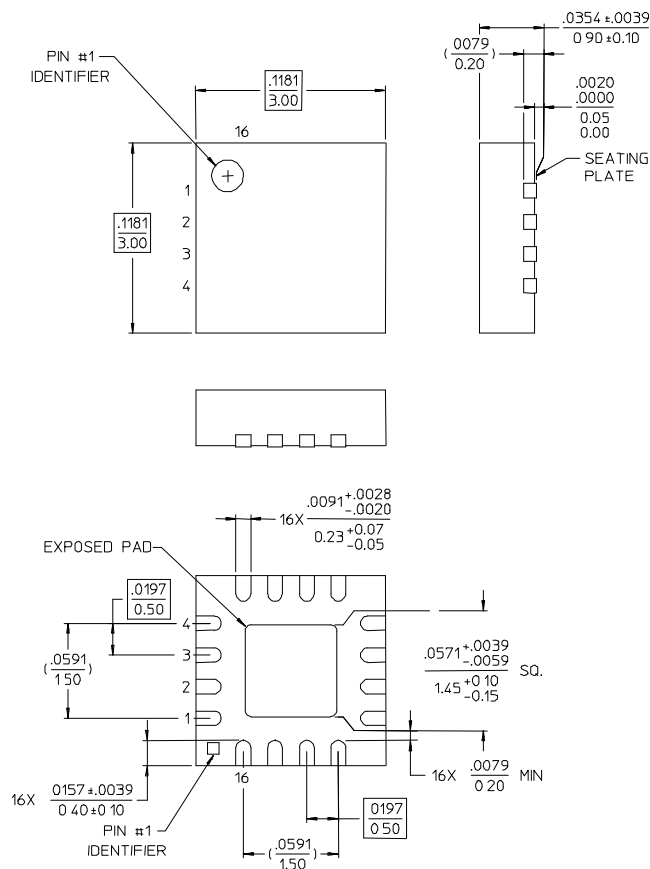


Typical Performance Curves (LO Drive = +19 dBm, RF = -10 dBm, IF = 200 MHz)

Input IP3



MA4EXP190H-1277T Outline - 3mm FQFP-N 16 Lead Saw Singulated



NOTES: 1. RBFBRBNCB JDBDC MQ-220. VAR. VBDD-1 FOR ADDITIONAL DIMENSIONAL AND TOLERANCE INFORMATION.
2. RBFBRBNCB S2083 APPLICATION NOTE FOR PCB FOOTPRINT INFORMATION.
3. ALL DIMENSIONS SHOWN AS INCHES/MM.

Ordering Information

Part Number	Package
MA4EXP190H-1277T	Tape and Reel