

# FS0805

## Ferrite Chip Inductor 0805 High L (0.470 $\mu$ H-10.00 $\mu$ H)

### Features

Leadless inductor wound on ferrite body. High SRF, allow excellent operation in RFID 13.56 MHz, filters in GSM frequencies, DECT, cordless communications, wireless LANs, etc.

**FS0805** ferrite wound chip inductor is manufactured under 100% test of **L** and **Q** actual operating frequencies. Fully automatic machine made.

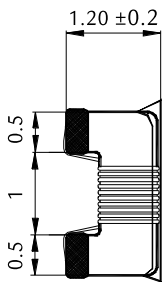
High production capacity ensures immediate delivery time.

### Materials

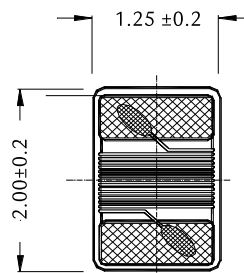
0805 FS type in ferrite body

Metallization: Ag+Ni+Sn100

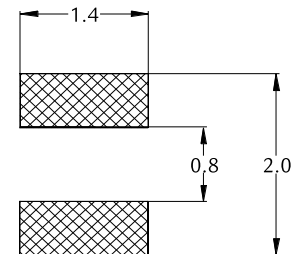
### Dimensions



Side view



Bottom view



Pad layout

### Product List

Ordering code <sup>2</sup>	L <sub>R</sub> ( $\mu$ H)	Tolerance <sup>1</sup>	Q <sub>Min</sub>	SRF Min. (MHz)	RDC ( $\Omega$ ) max.	IDC max. (mA)
FS0805-471+	0.470@25.2 MHz	G, J, K	45 @ 100 MHz	375	0.95	500
FS0805-561+	0.560@25.2 MHz	G, J, K	45 @ 100 MHz	340	1.10	450
FS0805-681+	0.680@25.2 MHz	G, J, K	35 @ 100 MHz	188	1.20	400
FS0805-821+	0.820@25.2 MHz	G, J, K	35 @ 100 MHz	215	1.50	300
FS0805-102+	1.00 @ 25.2 MHz	G, J, K	35 @ 50 MHz	200	2.13	180
FS0805-122+	1.20 @ 7.96 MHz	G, J, K	15 @ 7.96 MHz	200	2.38	150
FS0805-152+	1.50 @ 7.96 MHz	G, J, K	15 @ 7.96 MHz	200	2.90	130
FS0805-182+	1.80 @ 7.96 MHz	G, J, K	15 @ 7.96 MHz	120	3.00	120
FS0805-222+	2.20 @ 7.96 MHz	G, J, K	15 @ 7.96 MHz	110	3.10	110
FS0805-272+	2.70 @ 7.96 MHz	G, J, K	15 @ 7.96 MHz	100	3.50	100
FS0805-332+	3.30 @ 7.96 MHz	G, J, K	15 @ 7.96 MHz	70	2.30	210
FS0805-392+	3.90 @ 7.96 MHz	G, J, K	15 @ 7.96 MHz	60	2.50	200
FS0805-472+	4.70 @ 7.96 MHz	G, J, K	15 @ 7.96 MHz	50	2.80	180
FS0805-562+	5.60 @ 7.96 MHz	G, J, K	15 @ 7.96 MHz	45	3.00	160
FS0805-682+	6.80 @ 7.96 MHz	G, J, K	15 @ 7.96 MHz	45	3.20	130
FS0805-822+	8.20 @ 7.96 MHz	G, J, K	15 @ 7.96 MHz	40	3.50	120
FS0805-103+	10.0 @ 2.52 MHz	G, J, K	15 @ 2.52 MHz	40	5.00	80

1. Closer tolerances upon request.

2. Replace the + by the code letter for the required inductance tolerance (G=2% (if available), J=5%, K=10%, M=20%).