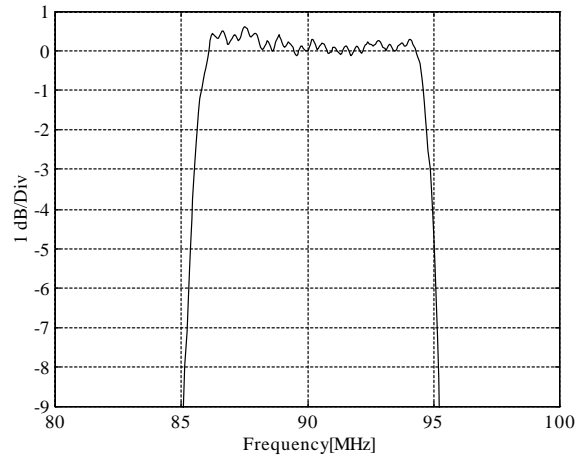
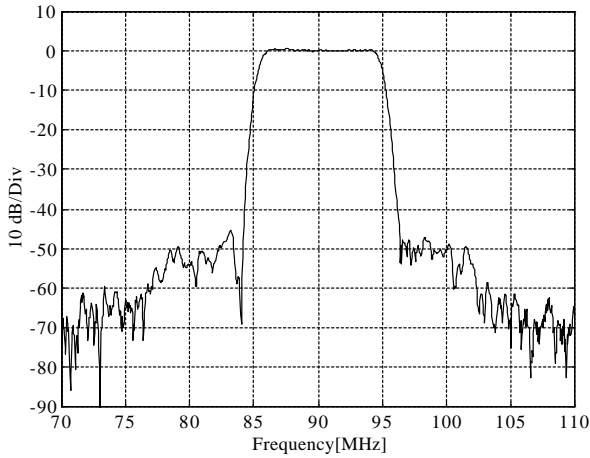


Typical Performance

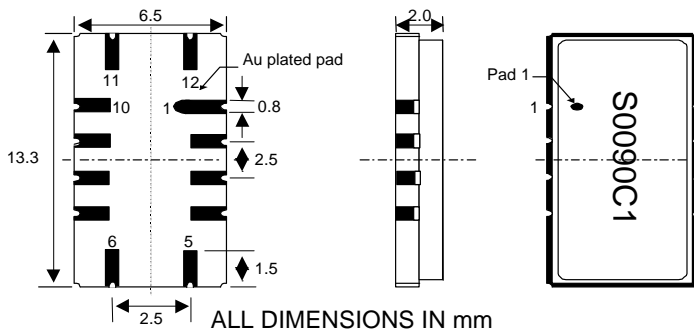
Frequency Response



Electrical Specification

	Condition	Specification	Unit	Remarks
		LG (FS0090C1)		
Center Frequency		90	MHz	
Insertion Loss	f_0	18 max	dB	
Ripple	$f_0 \pm 3.5$ MHz	1 max	dB	
Bandwidth	1 dB	8.5 max	MHz	
Bandwidth	3 dB	9 mn	MHz	
Bandwidth	40 dB	12.3 max	MHz	
Group Delay	$f_0 \pm 3.5$ MHz	100 max	ns	
Phase Linearity	$f_0 \pm 3.5$ MHz	7 max	degree	

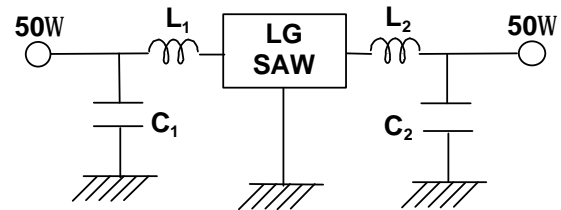
Package



ALL DIMENSIONS IN mm

Input : 11 Output : 5
 Input GND : 12 Output GND : 6
 Case Ground : 1,2,3,4,7,8,9,10

Matching Configuration



Contact Point

Seoul, Korea Domestic Sales

Tel) +82-2-2005-5264~8
 Fax) + 82-2-2005-5252
 E-mail : hdkim@lginnotek.com

Overseas Sales

Tel) +82 2 2005-5226
 Fax) +82 2 2005-5206~7
 E-mail : ykleeb@lginnotek.com

San Diego, USA R&D, Marketing Office

Tel) 1-858-693-0101
 Fax) 1-858-693-0091
 E-mail : khbaek@lginfocomm.com