



# SAW Components

Data Sheet B7841





SAW Components

B7841

Low-Loss Filter

2441,75 MHz

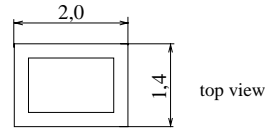
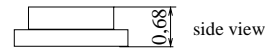
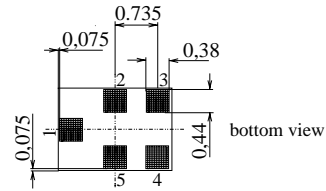
Data Sheet



Chip Sized Saw Package

**Features**

- Low-loss RF filter for bluetooth
- Usable passband 83,5 MHz
- Unbalanced to unbalanced operation
- Package for **Surface Mounted Technology (SMT)**



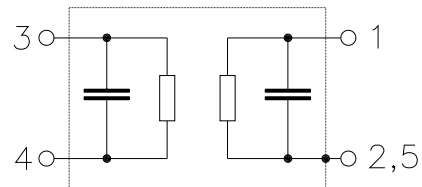
**Terminals**

- Ni, gold-plated

Dimensions in mm, approx. weight 0,007g

**Pin configuration**

- 1 Input, unbalanced
- 4 Output, unbalanced
- 2,5 Case ground
- 3 to be grounded



Type	Ordering code	Marking and Package according to	Packing according to
B7841	B39242-B7841-C710	C61157-A7-A82	F61074-V8151-Z000

Electrostatic Sensitive Device (ESD)

**Maximum ratings**

Operable temperature range	$T$	- 40 /+ 85	°C	Machine Model, 10 pulses source/load impedance 50Ω
Storage temperature range	$T_{stg}$	- 40 /+ 85	°C	
DC voltage	$V_{DC}$	3	V	
ESD voltage	$V_{ESD}$	50*	V	
Input power max. 2400...2483,5 MHz	$P_{IN}$	6	dBm	
824...915, 1710...1980 MHz		15		

\* - acc. to JESD22-A115A (Machine Model), 10 negative & 10 positive pulses



SAW Components

B7841

Low-Loss Filter

2441,75 MHz

Data Sheet



**Characteristics**

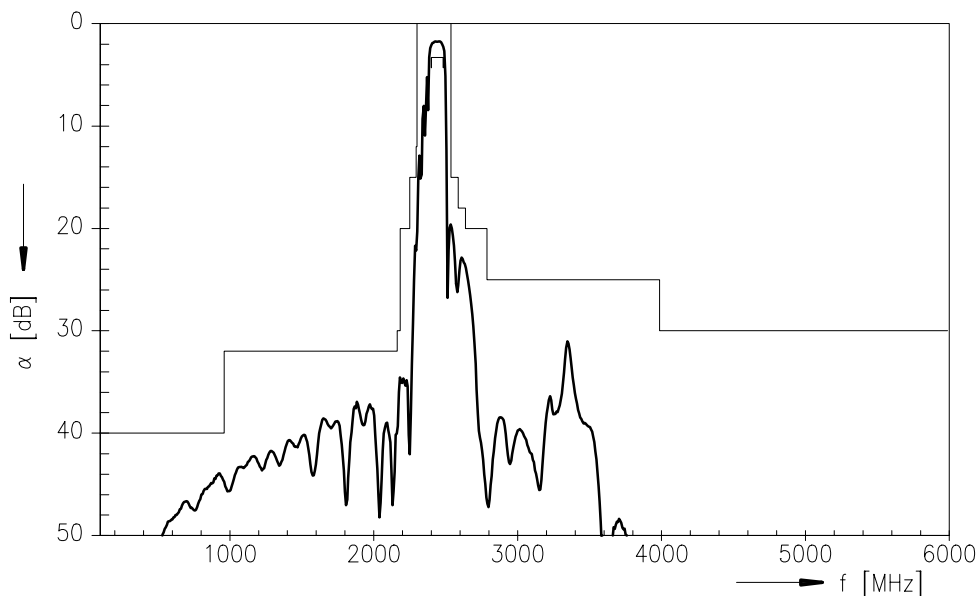
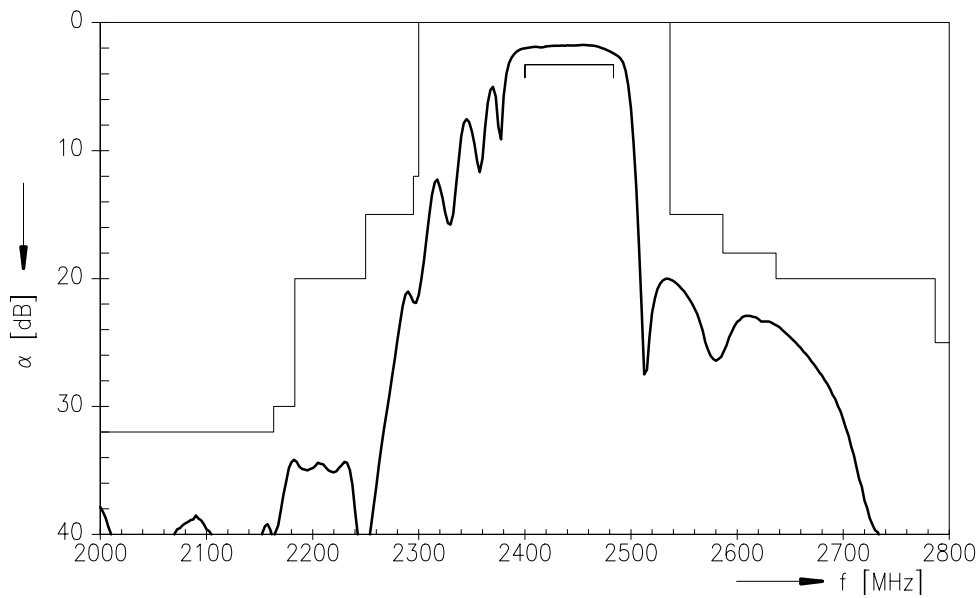
Operating temperature range:  $T = -40$  to  $+85$  °C  
 Terminating source impedance:  $Z_S = 50 \Omega - 1,5$  nH (serial)  
 Terminating load impedance:  $Z_L = 50 \Omega - 2,5$  nH (serial)

		min.	typ.	max.	
<b>Center frequency</b>	$f_c$	—	2441,75	—	MHz
<b>Maximum insertion attenuation</b>	$\alpha_{max}$				
	2400,0 ... 2483,5 MHz	—	2,2	3,3	dB
<b>Return loss</b>					
	2400,0 ... 2483,5 MHz*)	9,0	11,5	—	dB
<b>Amplitude ripple (p-p)</b>	$\Delta\alpha$				
	2400,0 ... 2483,5 MHz	—	0,5	1,5	dB
<b>Attenuation</b>	$\alpha$				
	100,0 ... 960,0 MHz	40	44	—	dB
	960,0 ... 2150,0 MHz	32	38	—	dB
	2150,0 ... 2170,0 MHz	30	36	—	dB
	2170,0 ... 2250,0 MHz	20	35	—	dB
	2250,0 ... 2295,0 MHz	15	21	—	dB
	2295,0 ... 2300,0 MHz	12	20	—	dB
	2550,0 ... 2600,0 MHz	15	20	—	dB
	2600,0 ... 2650,0 MHz	18	23	—	dB
	2650,0 ... 2800,0 MHz	20	24	—	dB
	2800,0 ... 4000,0 MHz	25	30	—	dB
	4000,0 ... 6000,0 MHz	30	50	—	dB

\*)  $T = +25$  °C



Transfer function





**SAW Components**

**B7841**

**Low-Loss Filter**

**2441,75 MHz**

Data Sheet



**Published by EPCOS AG**

**SAW MC WT, P.O. Box 80 17 09, 81617 Munich, GERMANY**

**TEL +49 89 636 09, FAX +49 89 636 2 26 89**

© EPCOS AG 2004. Reproduction, publication and dissemination of this brochure and the information contained therein without EPCOS' prior express consent is prohibited.

Purchase orders are subject to the General Conditions for the Supply of Products and Services of the Electrical and Electronics Industry recommended by the ZVEI (German Electrical and Electronic Manufacturers' Association), unless otherwise agreed.

This brochure replaces the previous edition.

For questions on technology, prices and delivery please contact the Sales Offices of EPCOS AG or the international Representatives.

Due to technical requirements components may contain dangerous substances. For information on the type in question please also contact one of our Sales Offices.