



# SAW Components

Data Sheet K 2982 M





**SAW Components**

**K 2982 M**

**IF Filter for Intercarrier Applications**

**38,90 MHz**

**Data Sheet**

**Standard**

- B/G
- D/K

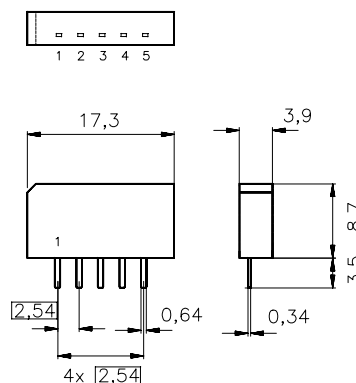
**Features**

- TV IF filter with Nyquist slope and sound shelf
- Broad sound shelf for sound carriers at 32,40 MHz and 33,40 MHz
- Group delay predistortion

**Terminals**

- Tinned CuFe alloy

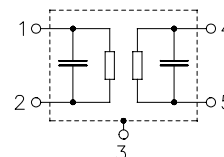
Plastic package **SIP5K**



Dimensions in mm, approx. weight 1,0 g

**Pin configuration**

- 1 Input
- 2 Input - ground
- 3 Chip carrier - ground
- 4 Output
- 5 Output



Type	Ordering code	Marking and package according to	Packing according to
K 2982 M	B39389-K2982-M100	C61157-A1-A15	F61074-V8067-Z000

**Maximum ratings**

Operable temperature range	$T_A$	- 25/+ 65	°C	
Storage temperature range	$T_{stg}$	- 40/+ 85	°C	
DC voltage	$V_{DC}$	5	V	between any terminals
AC voltage	$V_{pp}$	10	V	between any terminals


**SAW Components**
**K 2982 M**
**IF Filter for Intercarrier Applications**
**38,90 MHz**
**Data Sheet**
**Characteristics**

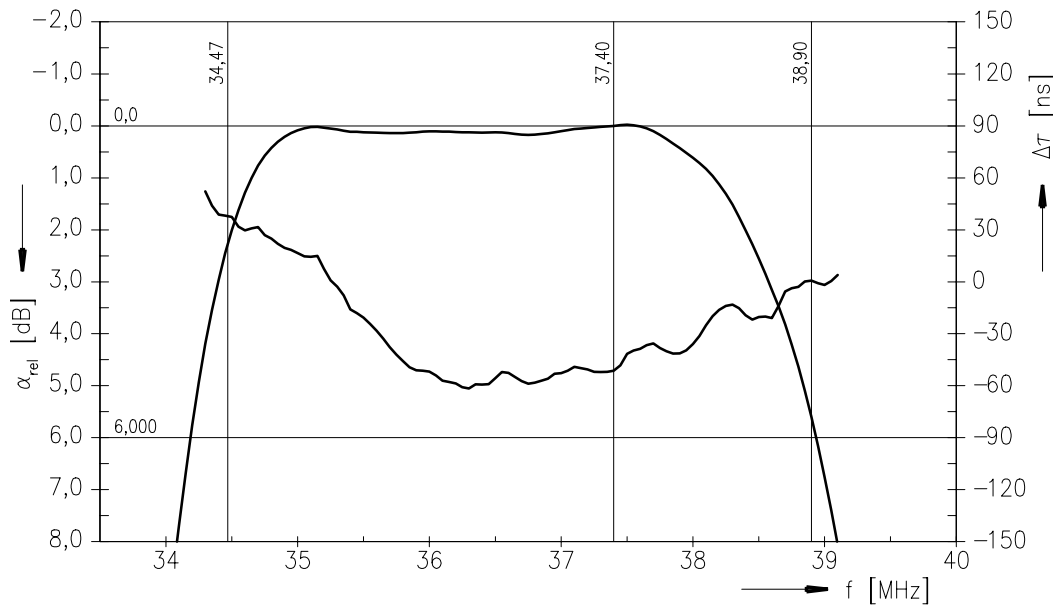
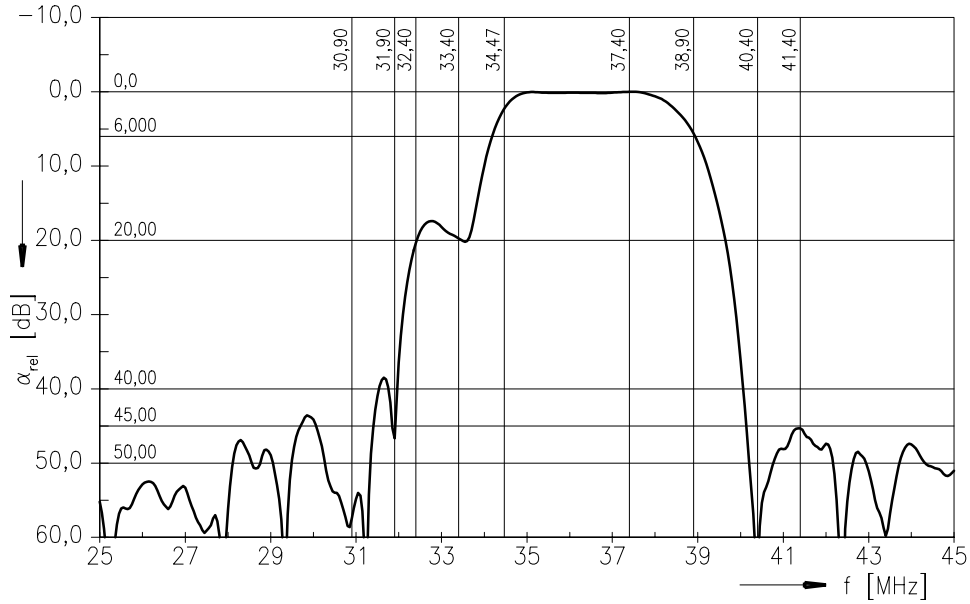
Reference temperature:  $T_A = 25\text{ °C}$   
 Terminating source impedance:  $Z_S = 50\ \Omega$   
 Terminating load impedance:  $Z_L = 2\text{ k}\Omega \parallel 3\text{ pF}$

		min.	typ.	max.	
<b>Insertion attenuation</b>					
	$\alpha$				
Reference level for the following data	37,40 MHz	13,6	15,1	16,6	dB
<b>Relative attenuation</b>					
	$\alpha_{rel}$				
Picture carrier	38,90 MHz	4,6	5,6	6,6	dB
Color carrier	34,47 MHz	1,5	2,5	3,5	dB
Sound carrier	32,40 MHz	18,8	20,3	21,8	dB
	33,40 MHz	18,2	19,7	21,2	dB
Adjacent picture carrier	30,90 MHz	44,0	56,0	—	dB
	31,90 MHz	40,0	46,0	—	dB
Adjacent sound carrier	40,40 MHz	45,0	58,0	—	dB
	41,40 MHz	38,0	45,0	—	dB
Lower sidelobe	25,00 ... 30,90 MHz	38,0	44,0	—	dB
Upper sidelobe	40,40 ... 45,00 MHz	36,0	44,0	—	dB
<b>Reflected wave signal suppression</b>					
1,0 $\mu$ s ... 6,0 $\mu$ s after main pulse (test pulse 250 ns, carrier frequency 37,40 MHz)		40,0	52,0	—	dB
<b>Feedthrough signal suppression</b>					
1,0 $\mu$ s ... 0,9 $\mu$ s before main pulse (test pulse 250 ns, carrier frequency 37,40 MHz)		50,0	56,0	—	dB
<b>Group delay predistortion</b>					
(reference frequency 38,90 MHz)					
	$\Delta\tau$				
	36,50 MHz	—	-55	—	ns
	34,47 MHz	—	45	—	ns
<b>Impedance at 37,40 MHz</b>					
	Input: $Z_{IN} = R_{IN} \parallel C_{IN}$	—	2,0  10,4	—	k $\Omega$    pF
	Output: $Z_{OUT} = R_{OUT} \parallel C_{OUT}$	—	3,2  3,1	—	k $\Omega$    pF
<b>Temperature coefficient of frequency</b>					
	$TC_f$	—	-72	—	ppm/K



Data Sheet

Frequency response





SAW Components

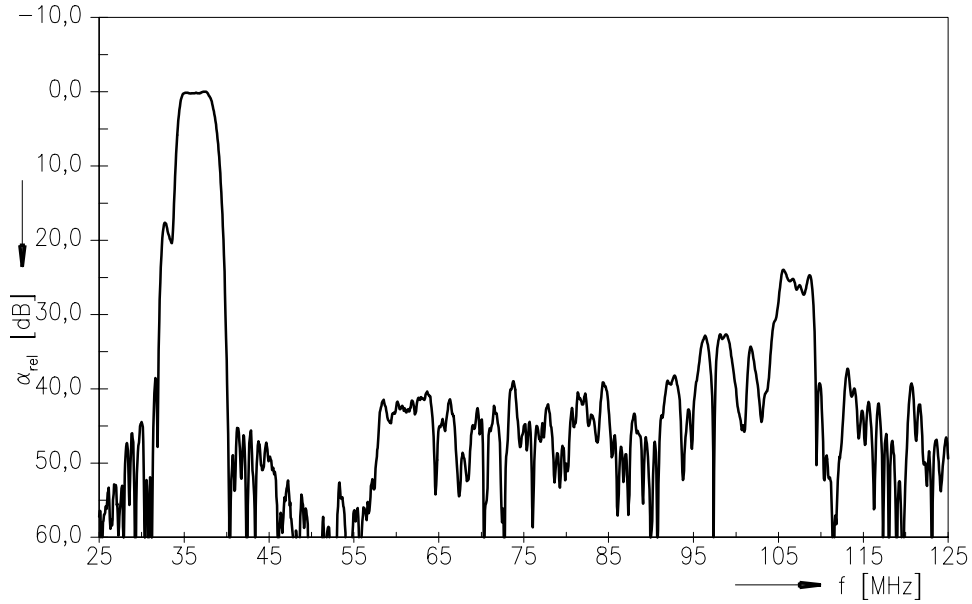
K 2982 M

IF Filter for Inter-carrier Applications

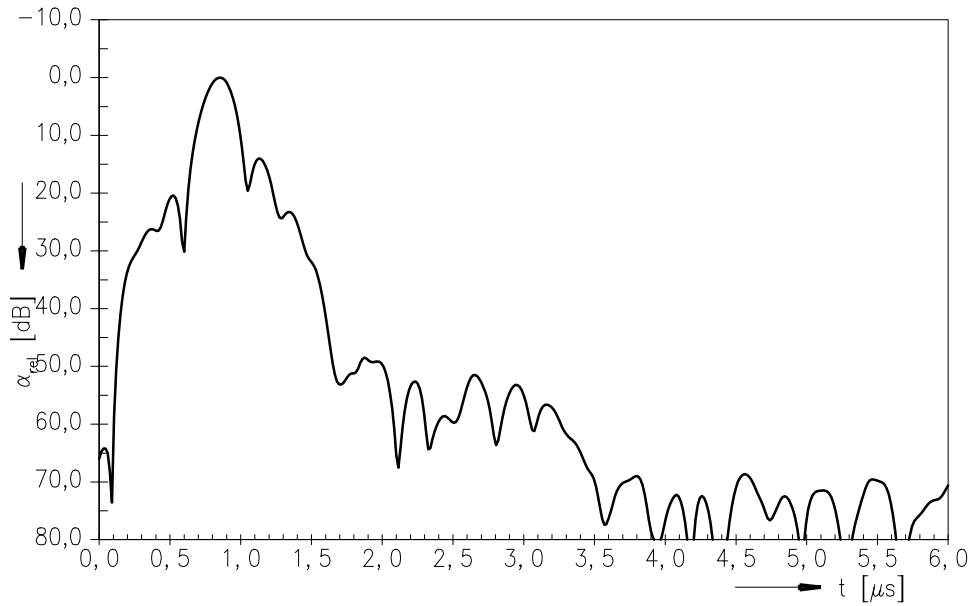
38,90 MHz

Data Sheet

Frequency response



Time domain response





**SAW Components**

**K 2982 M**

**IF Filter for Intercarrier Applications**

**38,90 MHz**

Data Sheet

**Published by EPCOS AG**

**Surface Acoustic Wave Components Division, SAW CE MM PD**

**P.O. Box 80 17 09, 81617 Munich, GERMANY**

© EPCOS AG 2005. Reproduction, publication and dissemination of this brochure and the information contained therein without EPCOS' prior express consent is prohibited.

Purchase orders are subject to the General Conditions for the Supply of Products and Services of the Electrical and Electronics Industry recommended by the ZVEI (German Electrical and Electronic Manufacturers' Association), unless otherwise agreed.

This brochure replaces the previous edition.

For questions on technology, prices and delivery please contact the Sales Offices of EPCOS AG or the international Representatives.

Due to technical requirements components may contain dangerous substances. For information on the type in question please also contact one of our Sales Offices.