



SAW Components

Data Sheet B7724





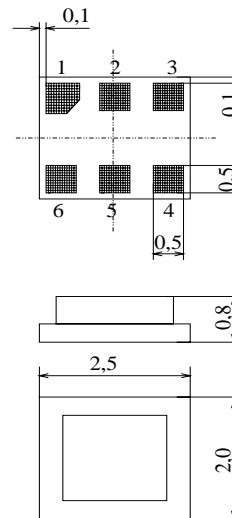
Chip sized SAW package DCS6I

Features

- Low-loss RF filter for mobile telephone GSM 850 systems, transmit path
- Low amplitude ripple
- Usable passband 25 MHz
- Balanced to unbalanced operation
- Impedance transformation from 200 Ω to 50 Ω
- Ceramic package for **Surface Mounted Technology (SMT)**

Terminals

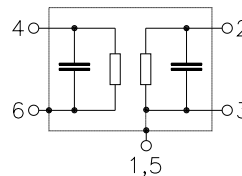
- Ni, gold-plated



Dimensions in mm, approx. weight 0,014g

Pin configuration

- 4, 6 Balanced input
- 2 Unbalanced output
- 1, 3, 5 To be grounded



Type	Ordering code	Marking and Package according to	Packing according to
B7724	B39841-B7724-C610	C61157-A7-A76	F61074-V8112-Z000

Electrostatic Sensitive Device (ESD)

Maximum ratings

Operable temperature range	T	- 30 / + 85	°C	Source impedance 200 Ω peak power of GSM 850 signal, duty cycle 1:4
Storage temperature range	T_{stg}	- 40 / + 85	°C	
DC voltage	V_{DC}	5	V	
ESD	V_{ESD}	50	V	
Input power max.	P_{IN}	15	dBm	



SAW Components

B7724

Low-Loss Filter for Mobile Communication

836,5 MHz

Data Sheet



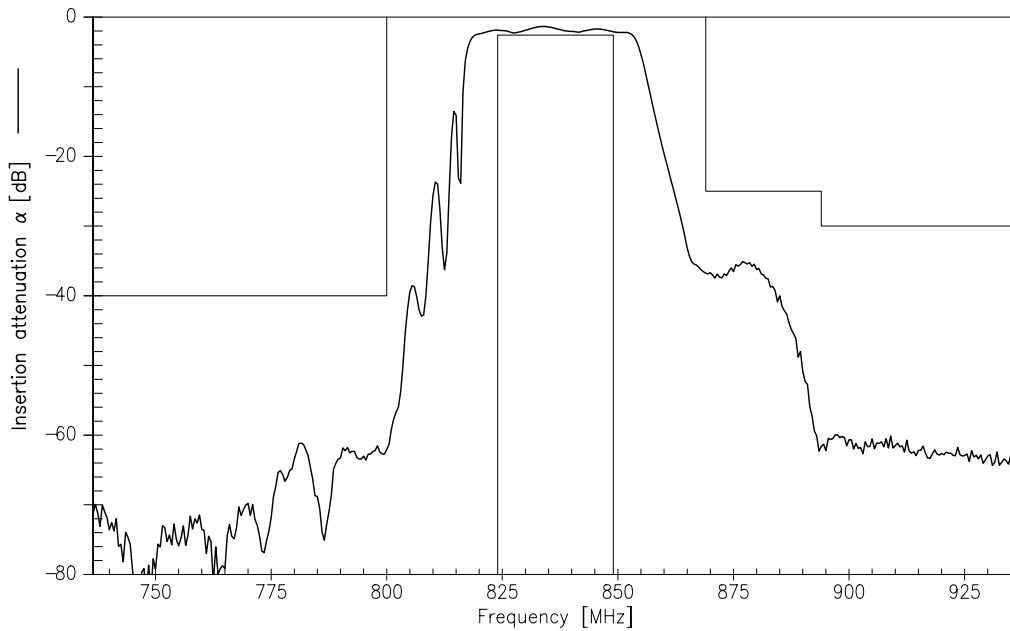
Characteristics

Operating temperature range: $T = -20$ to 80 °C
 Terminating source impedance: $Z_S = 200 \Omega$ (balanced)
 Terminating load impedance: $Z_L = 50 \Omega$ (unbalanced)

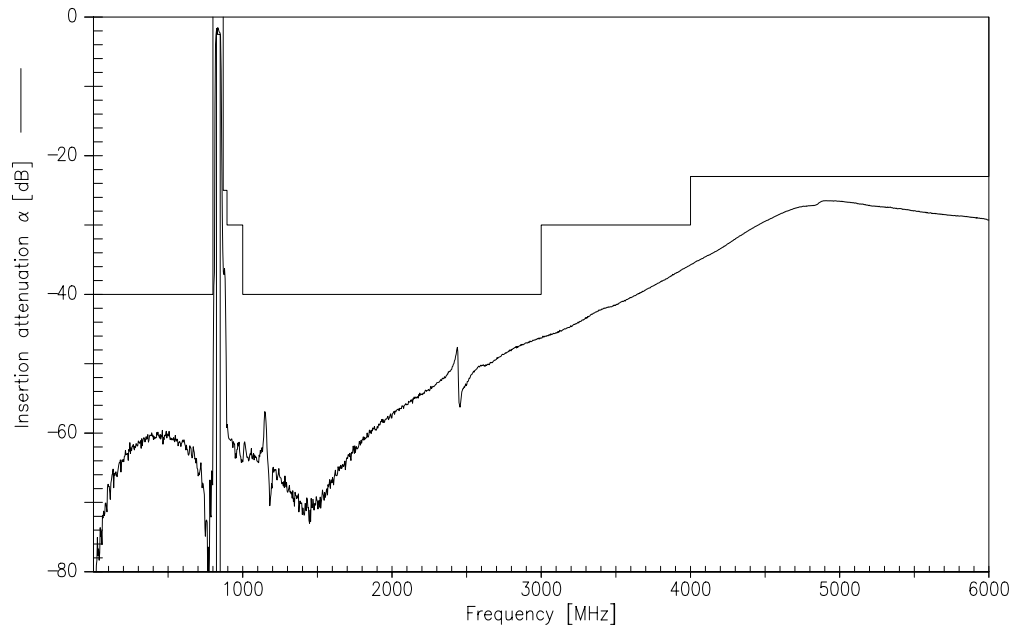
				min.	typ.	max.	
Center frequency	f_C			—	836,5	—	MHz
Maximum insertion attenuation	α_{max}						
		824,0 ... 849,0	MHz	—	2,3	2,6	dB
Amplitude ripple (p-p)	$\Delta\alpha$						
		824,0 ... 849,0	MHz	—	0,9	1,2	dB
Balanced input return loss							
		824,0 ... 849,0	MHz	7,0	8,0	—	dB
Unbalanced output return loss							
		824,0 ... 849,0	MHz	7,0	8,0	—	dB
Common mode Suppression	S_{sc12}						
		0,1 ... 804,0	MHz	30	50	—	dB
		824,0 ... 849,0	MHz	20	25	—	dB
		869,0 ... 6000,0	MHz	30	35	—	dB
Attenuation	α						
		0,0 ... 800,0	MHz	40	55	—	dB
		869,0 ... 894,0	MHz	25	36	—	dB
		894,0 ... 1000,0	MHz	30	60	—	dB
		1000,0 ... 3000,0	MHz	40	45	—	dB
		3000,0 ... 4000,0	MHz	30	34	—	dB
		4000,0 ... 6000,0	MHz	23	26	—	dB
Rx band suppression	α						
		869,0 ... 894,0	MHz	25	36	—	dB



Transfer function (narrowband measurement)

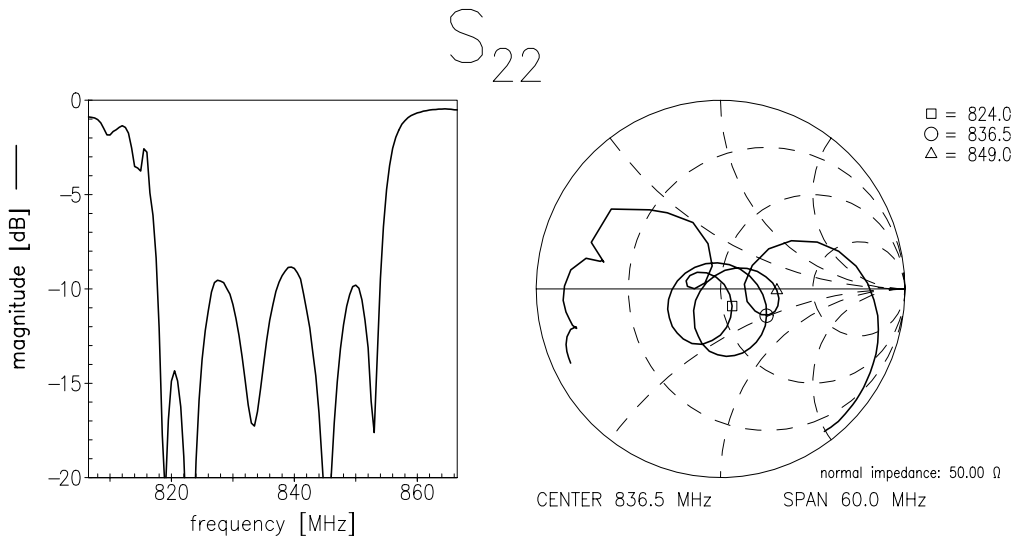
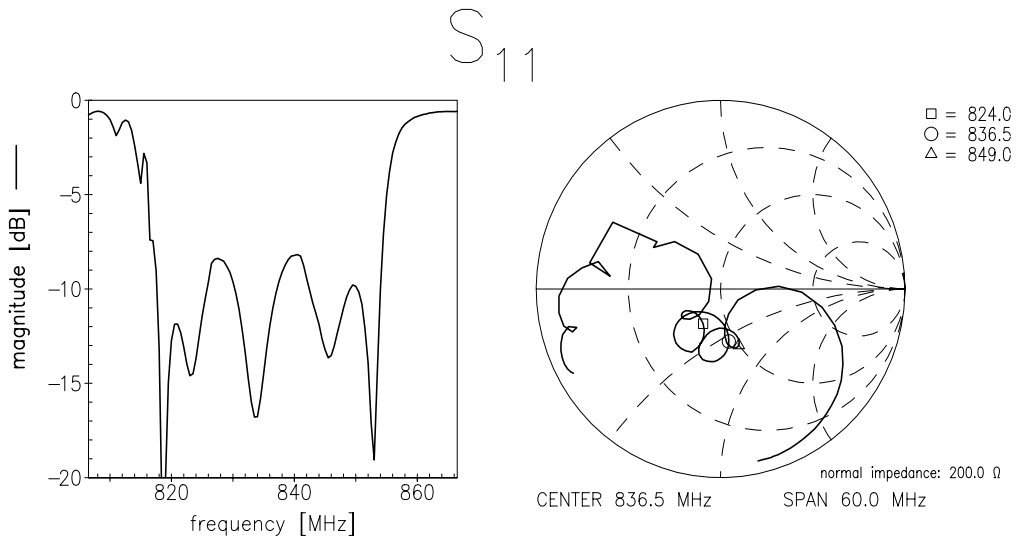


Transfer function (wideband measurement)





Matching (measurement; S11 is balanced input)





SAW Components

B7724

Low-Loss Filter for Mobile Communication

836,5 MHz

Data Sheet



Published by EPCOS AG

Surface Acoustic Wave Components Division, SAW MC WT

P.O. Box 80 17 09, 81617 Munich, GERMANY

© EPCOS AG 2002. Reproduction, publication and dissemination of this brochure and the information contained therein without EPCOS' prior express consent is prohibited.

Purchase orders are subject to the General Conditions for the Supply of Products and Services of the Electrical and Electronics Industry recommended by the ZVEI (German Electrical and Electronic Manufacturers' Association), unless otherwise agreed.

This brochure replaces the previous edition.

For questions on technology, prices and delivery please contact the Sales Offices of EPCOS AG or the international Representatives.

Due to technical requirements components may contain dangerous substances. For information on the type in question please also contact one of our Sales Offices.