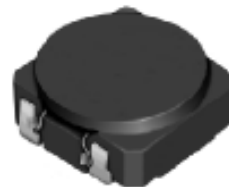
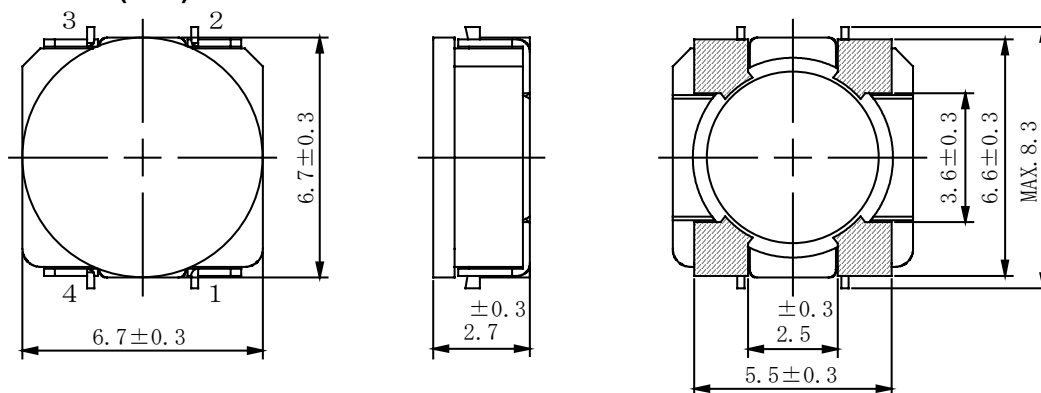
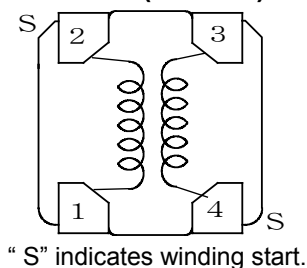
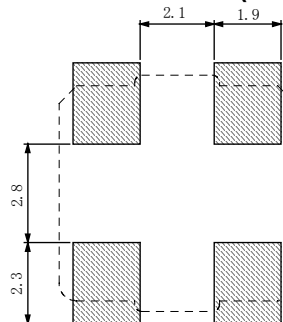


Type: CLS6D28
◆ Product Description

- 7.0×7.0mm Max.(L×W), 3.0mm Max. Height.
- In addition to the typical versions of parameters shown here, custom designs are available to meet your exact requirements.


◆ Feature

- Magnetically shielded construction.
- Max. Operating frequency 1MHz, Max. Operating power 3.0W.
- 2 in 1 Coils for high efficient up-down DC-DC converters (SEPIC, Zeta circuits to be used).
- Ideally used in the power supply for DSC, Note PC, DVC and W-LED backlighting.
- RoHS Compliance

◆ Dimensions (mm)

◆ Schematics (Bottom)

◆ Land Pattern (mm)

◆ Specification

Sample No.	Inductance (1-2)/(3-4) (100kHz/1.0V)	D.C.R. (1-2)	D.C.R. (3-4)	Rated current (1-4) Tie (2-3)
4348-T018	$33 \mu H \pm 30\%$	$350m \Omega$ Max.	$460m \Omega$ Max.	$0.89 A$

※ Rated current: The D.C. current at which the inductance decreases to 90% of it's initial value or when $\Delta t = 40^\circ C$, whichever is lower ($T_a = 20^\circ C$).