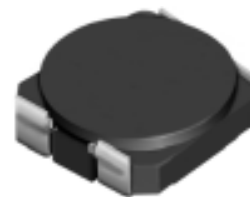
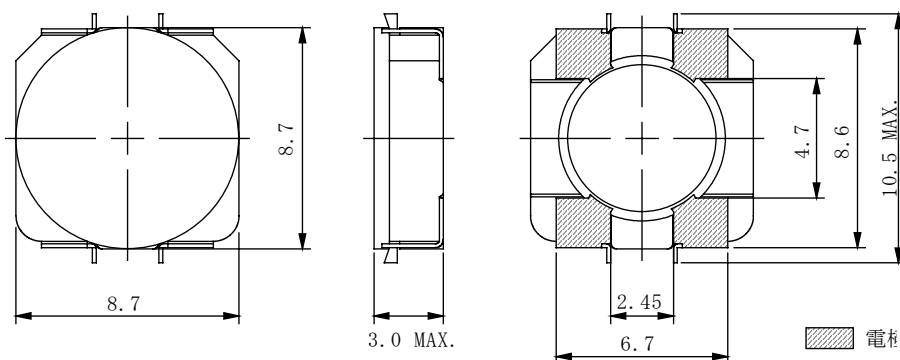
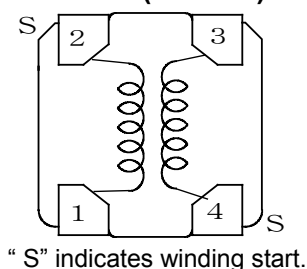
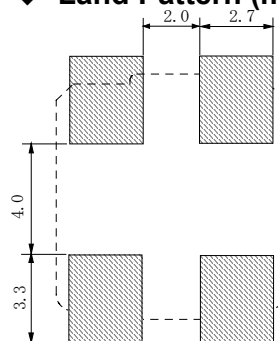


Type: CLS8D28
◆ Product Description

- 8.7×8.7mm Max.(L×W), 3.0mm Max. Height.
- Custom design is available.


◆ Feature

- Magnetically shielded construction.
- Max. Operating frequency 1MHz, Max. Operating power 3.0W.
- 2 in 1 Coils for high efficient up-down DC-DC converters (SEPIC, Zeta circuits to be used).
- Ideally used in the power supply for DSC, Note PC, DVC and W-LED backlighting.
- RoHS Compliance

◆ Dimensions (mm)

◆ Schematics (Bottom)

◆ Land Pattern (mm)

◆ Specification

| Sample No. | Inductance (1-2)/(3-4) (100kHz/1.0V) | D.C.R. (1-2) | D.C.R. (3-4) | Rated current (1-4) Tie (2-3) |
|------------|---|--------------------|--------------------|----------------------------------|
| 10314-T001 | 10 μ H \pm 30% | 104m Ω Max. | 130m Ω Max. | 0.95 A |

※ Rated current: The D.C. current at which the inductance decreases to 90% of it's initial value or when $\Delta t=40^{\circ}\text{C}$, whichever is lower($T_a=20^{\circ}\text{C}$).