

## Interface Portions and In-line Portions of the Various Units and Devices

GT 5

GT 13

GT 16

PO5G

GT 11

GT 14

GT 17

GT 19

GT 3

GT 6W

GT 7

GT 10

GT 18W

GT 15

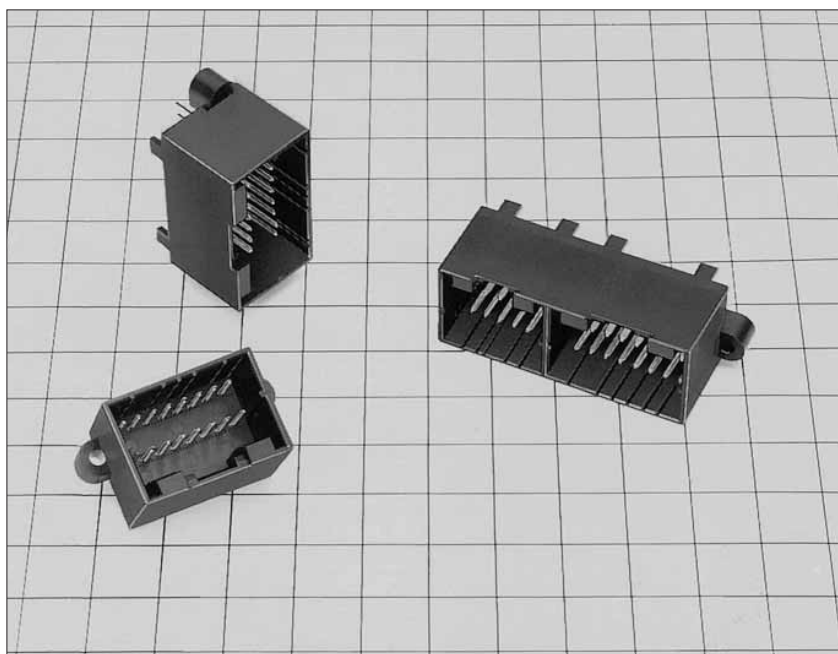
GT 8

GT 9

GT 25

# GT3 Series

<GT3, GT3B, GT3TK, and GT3TKW>



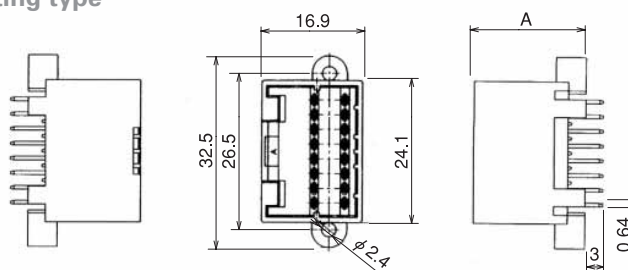
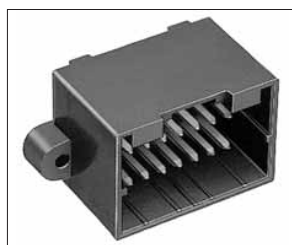
### ■ Features

- Available in a low-profile (GT3) and a standard (GT3B) type.
- Split type uses a mounting screw hole diameter of 2.6 mm.
- Tab width is size 040.

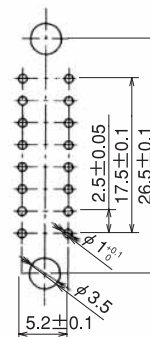
## M Connectors

### Printed Circuit Board mounting type

16 Pos.



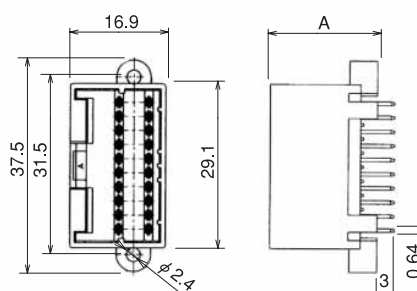
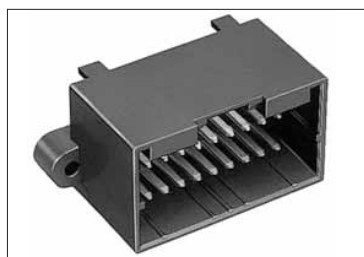
#### Recommended Board Mounting Pattern



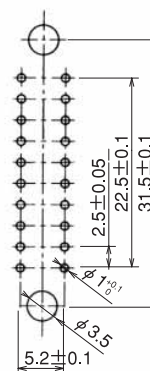
Part Number	CL No.	A Dimension	RoHS
GT3-16DP-2.5DSA(70)	753-0001-6-70	17	YES
GT3B-16DP-2.5DSA(70)	753-0003-1-70	19	

Item	Material	Finish
Pin header	PBT	Color: Black
M terminal	Brass	Tin plating

20 Pos.



#### Recommended Board Mounting Pattern

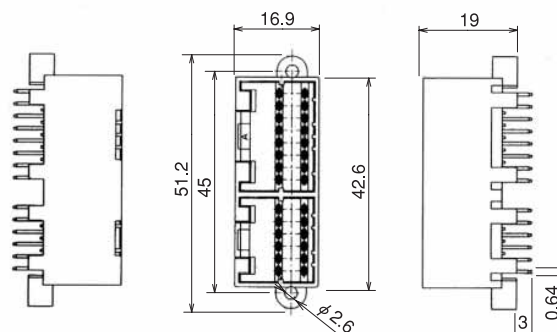
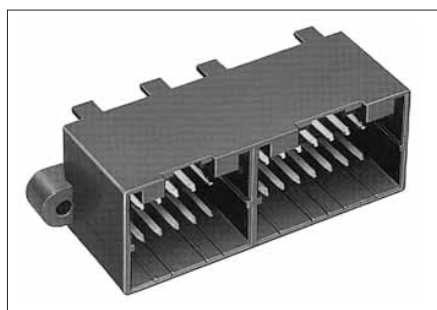


Part Number	CL No.	A Dimension	RoHS
GT3-20DP-2.5DSA(70)	753-0002-9-70	17	YES
GT3B-20DP-2.5DSA(70)	753-0004-4-70	19	

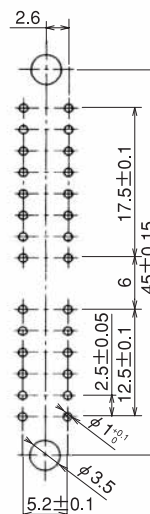
Item	Material	Finish
Pin header	PBT	Color: Black
M terminal	Brass	Tin plating

### Split Type

12 Pos. + 16 Pos.



#### Recommended Board Mounting Pattern



Part Number	CL No.	RoHS
GT3B-12/16DP-2.5DSA(70)	753-0005-7-70	YES

Item	Material	Finish
Pin header	PBT	Color: Black
M terminal	Brass	Tin plating

GT 5  
GT 13  
GT 16  
PO5G  
GT 11  
GT 14  
GT 17  
GT 19  
GT 3  
GT 6W  
GT 7  
GT 10  
GT 18W  
GT 15  
GT 8  
GT 9  
GT 25

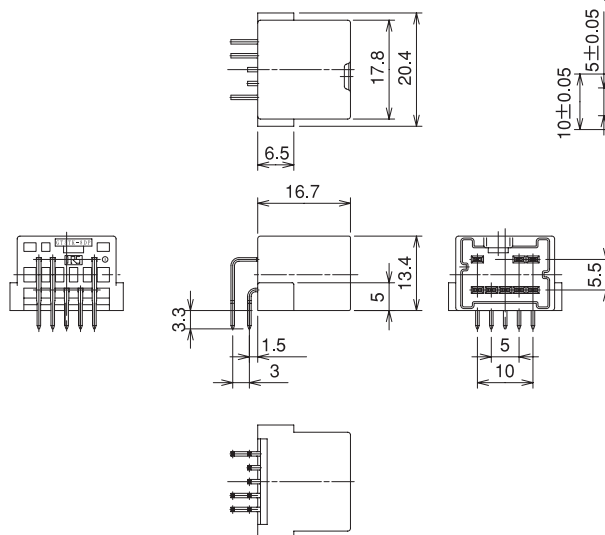
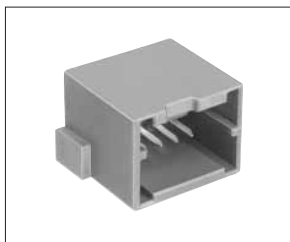
Interface Portions and In-line Portions of the Various Units and Devices

GT3 Series

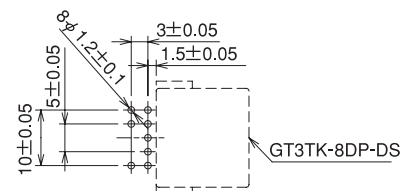
■ GT3TK Series

● Printed Circuit Board mounting type

8-Pos. Right Angle

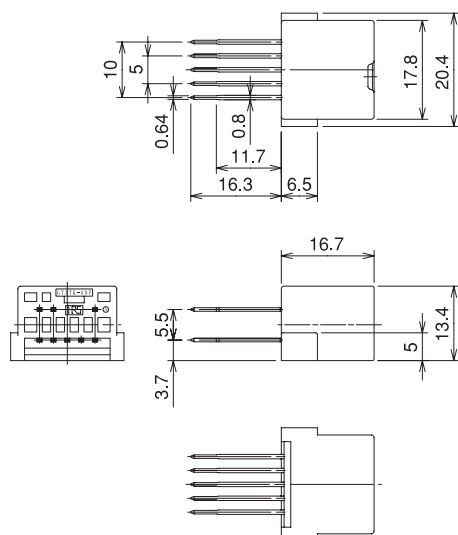
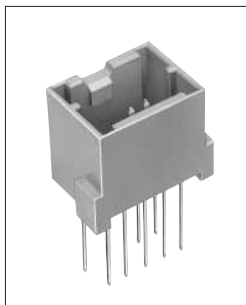


◆ Recommended Board Mounting Pattern

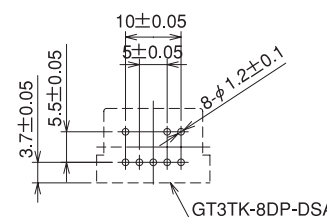


Part Number	CL No.	Material	Finish	Packaging	RoHS
GT3TK-8DP-DS	753-0007-2	Brass (Terminal)	Tin plating	1	YES
		PBT (Housing)	Color: Brown		

8-Pos. Straight



◆ Recommended Board Mounting Pattern

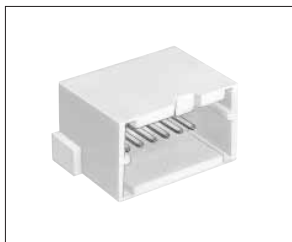


Part Number	CL No.	Material	Finish	Packaging	RoHS
GT3TK-8DP-DSA	753-0018-9	Brass (Terminal)	Tin plating	1	YES
		PBT (Housing)	Color: Brown		

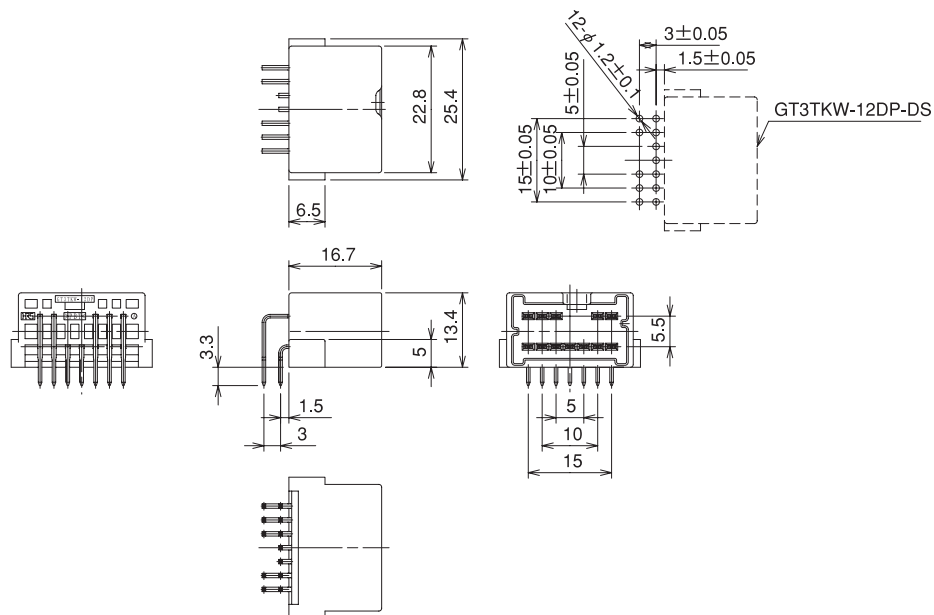
Interface Portions and In-line Portions of the Various Units and Devices

- GT 5
- GT 13
- GT 16
- PO5G
- GT 11
- GT 14
- GT 17
- GT 19
- GT 3
- GT 6W
- GT 7
- GT 10
- GT 18W
- GT 15
- GT 8
- GT 9
- GT 25

**12-Pos. Right Angle**

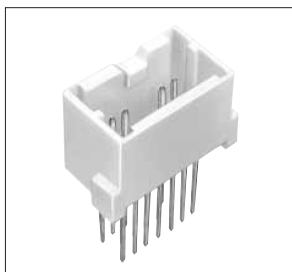


**Recommended Board Mounting Pattern**

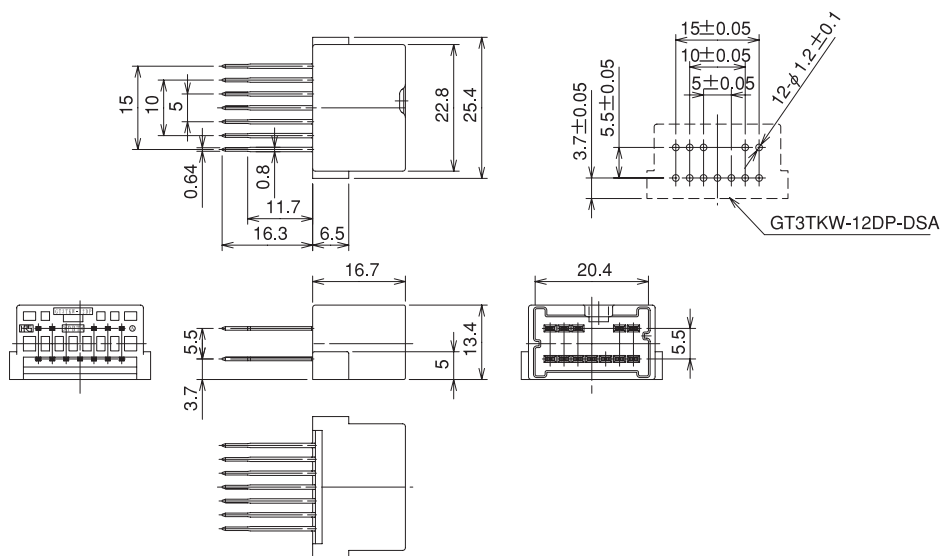


Part Number	CL No.	Material	Finish	Packaging	RoHS
GT3TKW-12DP-DS	753-0010-7	Brass (Terminal)	Tin plating	1	YES
		PBT (Housing)	Color: Natural		

**12-Pos. Straight**



**Recommended Board Mounting Pattern**

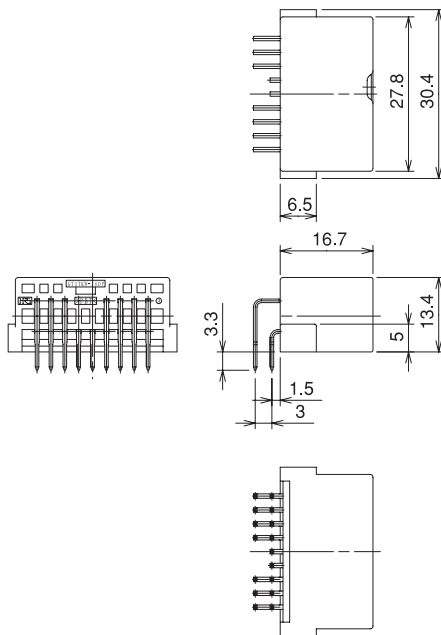
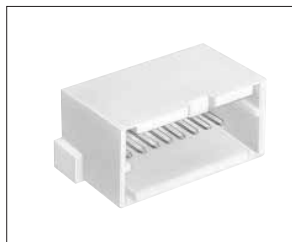


Part Number	CL No.	Material	Finish	Packaging	RoHS
GT3TKW-12DP-DSA	753-0015-0	Brass (Terminal)	Tin plating	1	YES
		PBT (Housing)	Color: Natural		

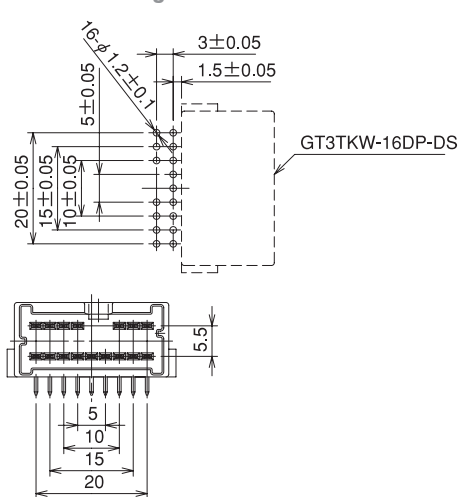
- GT 5
- GT 13
- GT 16
- PO5G
- GT 11
- GT 14
- GT 17
- GT 19
- Interface Portions and In-line Portions of the Various Units and Devices**
- GT 3
- GT 6W
- GT 7
- GT 10
- GT 18W
- GT 15
- GT 8
- GT 9
- GT 25

GT3 Series

16-Pos. Right Angle

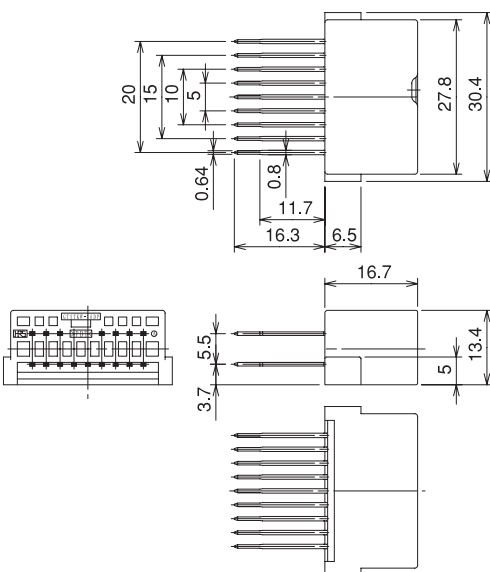
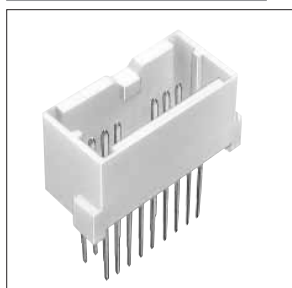


Recommended Board Mounting Pattern

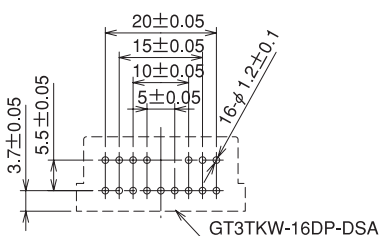


Part Number	CL No.	Material	Finish	Packaging	RoHS
GT3TKW-16DP-DS	753-0011-0	Brass (Terminal)	Tin plating	1	YES
		PBT (Housing)	Color: Natural		

16-Pos. Straight



Recommended Board Mounting Pattern

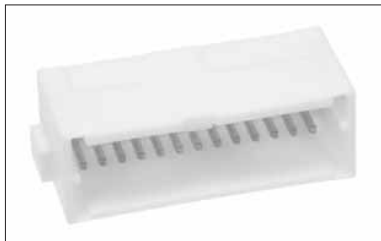


Part Number	CL No.	Material	Finish	Packaging	RoHS
GT3TKW-16DP-DSA	753-0012-2	Brass (Terminal)	Tin plating	1	YES
		PBT (Housing)	Color: Natural		

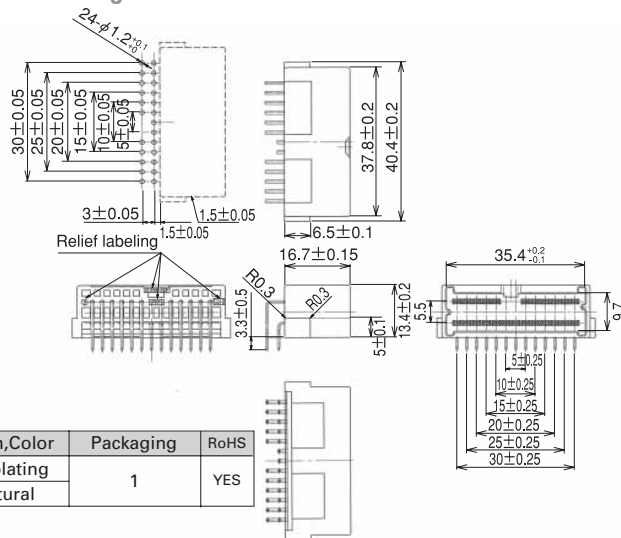
Interface Portions and In-line Portions of the Various Units and Devices

- GT 5
- GT 13
- GT 16
- PO5G
- GT 11
- GT 14
- GT 17
- GT 19
- GT 3
- GT 6W
- GT 7
- GT 10
- GT 18W
- GT 15
- GT 8
- GT 9
- GT 25

### 24-Pos. Straight

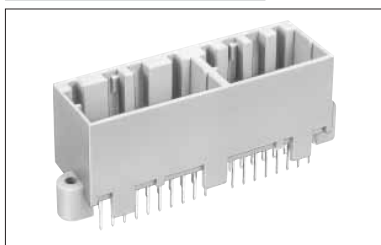


#### Recommended Board Mounting Pattern

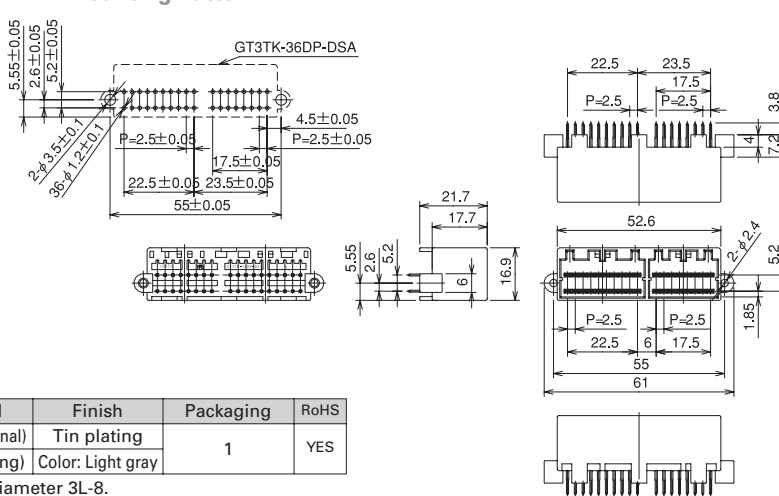


Part Number	HRS No.	Material	Finish,Color	Packaging	RoHS
GT3TKW-24DP-DS	753-0019-1	Brass (Terminal) PBT (Housing)	Tin plating Natural	1	YES

### 36-Pos. Straight



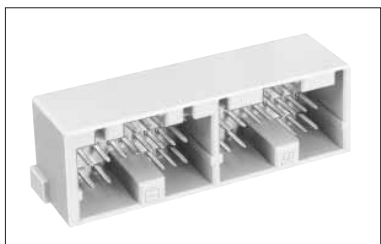
#### Recommended Board Mounting Pattern



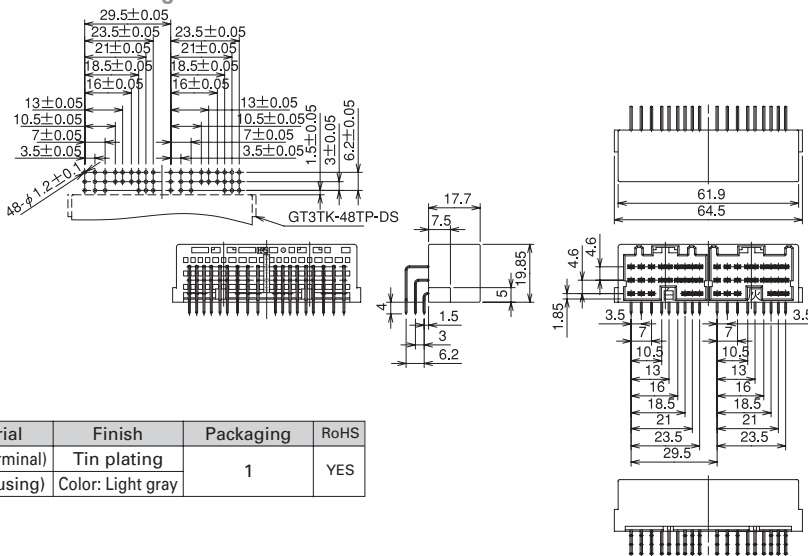
Part Number	CL No.	Material	Finish	Packaging	RoHS
GT3TK-36DP-DSA	753-0017-6	Brass (Terminal) PBT (Housing)	Tin plating Color: Light gray	1	YES

Note: Use mounting screws of M3 with nominal diameter 3L-8.

### 48-Pos. Right Angle



#### Recommended Board Mounting Pattern



Part Number	CL No.	Material	Finish	Packaging	RoHS
GT3TK-48TP-DS	753-0008-5	Brass (Terminal) PBT (Housing)	Tin plating Color: Light gray	1	YES

Interface Portions and In-line Portions of the Various Units and Devices

- GT 5
- GT 13
- GT 16
- PO5G
- GT 11
- GT 14
- GT 17
- GT 19
- GT 3
- GT 6W
- GT 7
- GT 10
- GT 18W
- GT 15
- GT 8
- GT 9
- GT 25