

# Anaren

## RF Power

### Model RFP-150-100RCGF-S

**RoHS  
Compliant**

**Flanged Resistor  
150 Watts, 100Ω**



#### General Specifications

<b>Resistive Element</b>	Thick film
<b>Substrate</b>	Beryllium oxide ceramic
<b>Cover</b>	Alumina ceramic
<b>Mounting Flange</b>	Copper, nickel plated per QQ-N-290
<b>Lead(s)</b>	99.9% pure silver (.005" thick)
<b>Operating Temperature</b>	-55 to +150°C (see de rating chart)

Tolerance is  $\pm 0.010$ ", unless otherwise specified. Designed to meet or exceed applicable portions of MIL-E-5400. All dimensions in inches.

#### Electrical Specifications

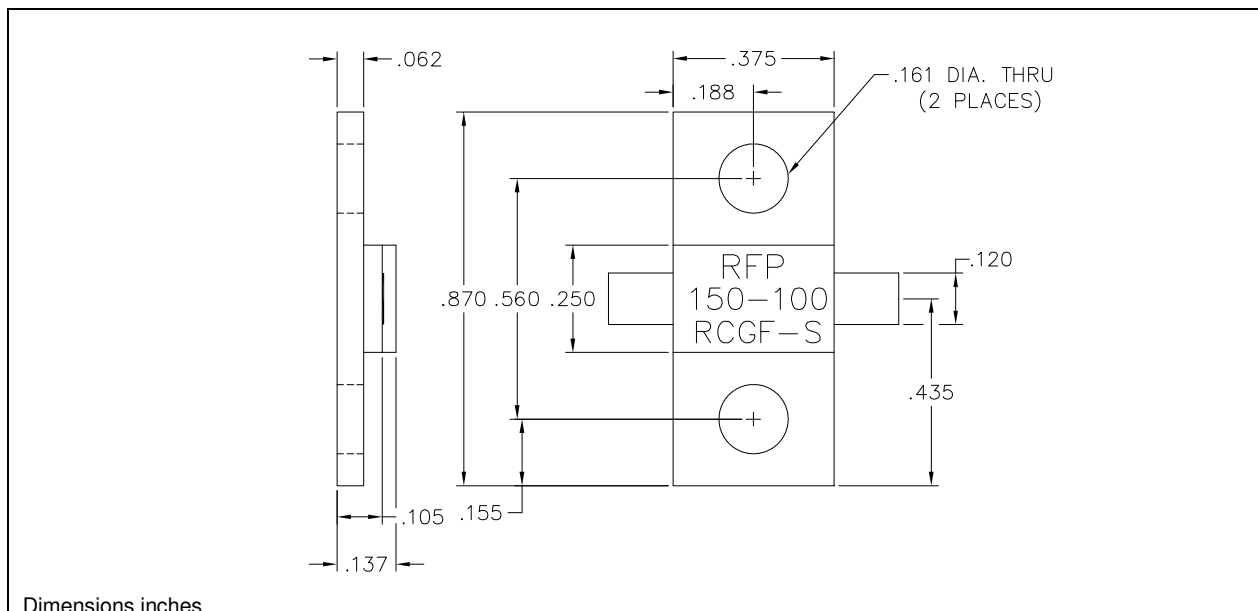
<b>Resistance Value:</b>	100 Ohms, $\pm 5\%$
<b>Power:</b>	150 Watts
<b>Frequency Range:</b>	DC – 2.0 GHz
<b>Capacitance</b>	3.5 pF

Specification based on unit properly installed using suggested mounting instructions and a 50 ohm nominal impedance. **Specifications subject to change.**

#### Features:

- RoHS Compliant
- 150 Watts
- DC – 2.0 GHz
- Beryllium oxide Ceramic
- Welded Silver Leads
- Non-Nichrome Resistive Element
- 100% Tested
- RoHS Compliant

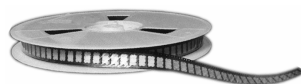
#### Outline Drawing



Dimensions inches

150-100RCGF-S (097) Rev B

**Anaren**  
What'll we think of next?™

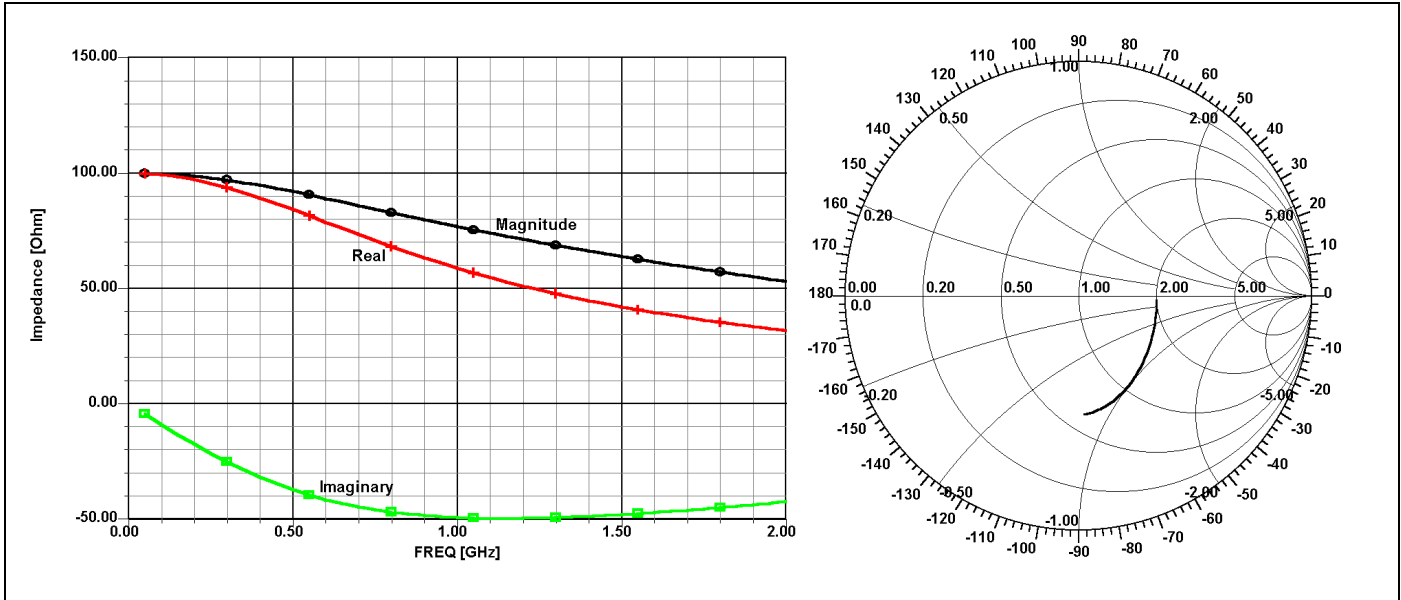


Available on Tape  
and Reel For Pick and  
Place Manufacturing.

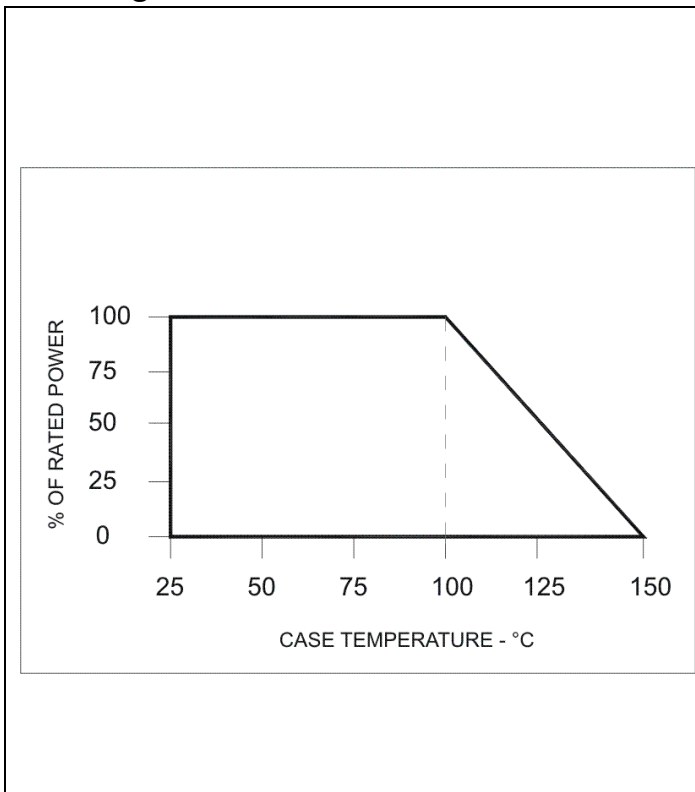
USA/Canada: (315) 432-8909  
Toll Free: (800) 544-2414  
Europe: +44 2392-232392



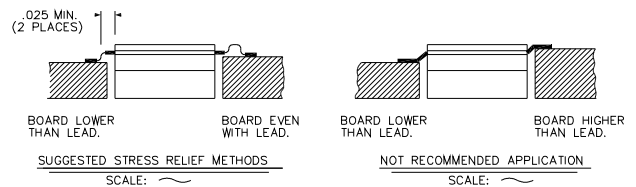
## Typical Performance:



## Derating:



## Mounting Footprint and Procedure:



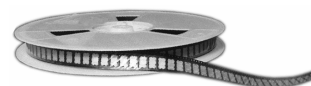
### SUGGESTED MOUNTING PROCEDURES:

1. MAKE SURE THAT THE DEVICES ARE MOUNTED ON FLAT SURFACES (.001" UNDER THE DEVICE) TO OPTIMIZE THE HEAT TRANSFER.
2. DRILL & TAP THE HEATSINK FOR THE APPROPRIATE THREAD SIZE TO BE USED.
3. COAT HEATSINK WITH A MINIMUM AMOUNT OF HIGH QUALITY SILICONE GREASE (.001" MAX. THICKNESS).
4. POSITION DEVICE ON MOUNTING SURFACE & SECURE USING SOCKET HEAD SCREWS, FLAT & SPLIT WASHER. TORQUE SCREWS TO THE APPROPRIATE VALUE. MAKE SURE THAT THE DEVICE IS FLAT AGAINST THE HEATSINK. (CARE SHOULD BE TAKEN TO AVOID UPWARD PRESSURE OF THE LEADS TOWARDS THE LID).
5. SOLDER LEADS IN PLACE USING AN APPROPRIATE TYPE SOLDER WITH A CONTROLLED TEMPERATURE IRON.

150-100RCGF-S (097) Rev B

USA/Canada: (315) 432-8909  
 Toll Free: (800) 544-2414  
 Europe: +44 2392-232392

Available on Tape and Reel For Pick and Place Manufacturing.



**Anaren**  
 What'll we think of next?™