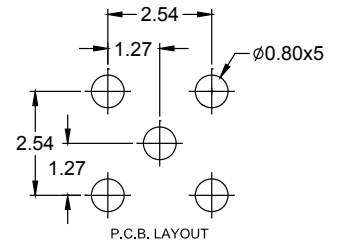
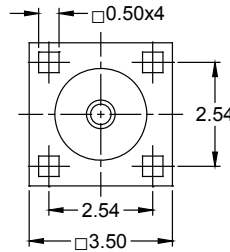
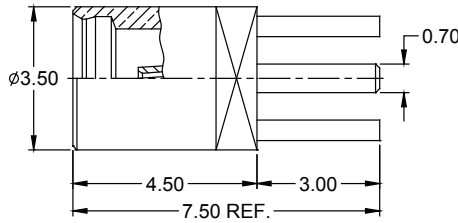


RF Connectors MMCX Series

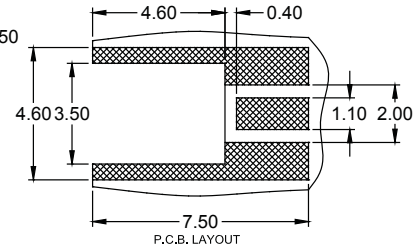
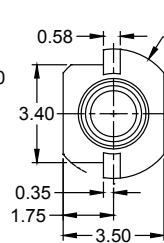
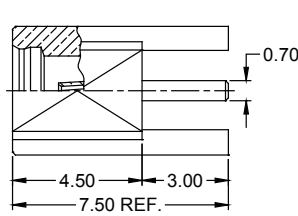


STRAIGHT THT JACK



Order Code
RFJ-MMS-B1N592-58

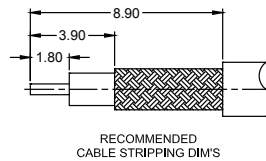
STRAIGHT SMT JACK



Order Code
RFJ-MMS-B2L592-58

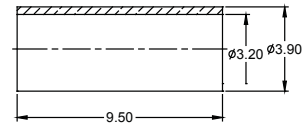
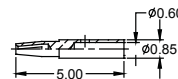
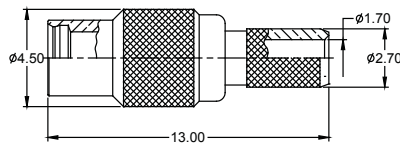
□ PATTERN
▨ LAND(FREE OF SOLDER MASK)

CRIMP JACK



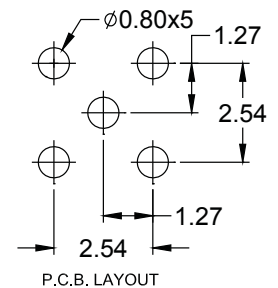
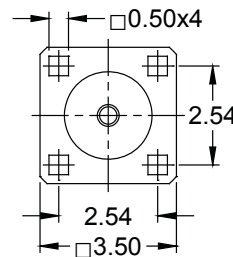
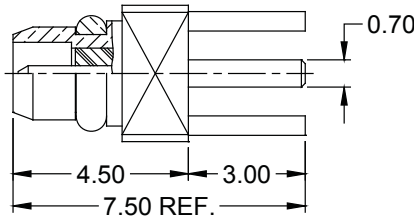
CABLE TYPES
RG-174/U, 188A/U, 316/U

RECOMMENDED
CABLE STRIPPING DIM'S



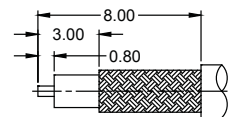
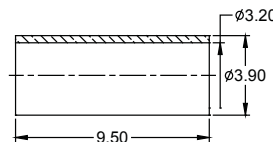
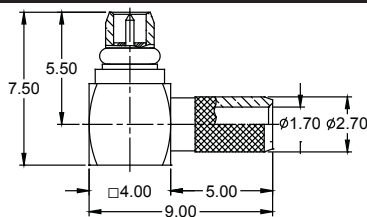
Order Code
RFJ-MMS-C1N502-58

STRAIGHT THT PLUG



Order Code
RFP-MMS-B1N592-58

R/A CRIMP PLUG



RECOMMENDED
CABLE STRIPPING DIM'S

CABLE TYPES
RG-174/U, 188A/U, 316/U

Order Code
RFP-MMR-C1N502-58

Other MMCX types available on request