

PH300S/PH600S-SERIES

Single output 300W ~ 600W
DC-DC power module

LAMBDA
DENSEI-LAMBDA



CE (Low Voltage Directive)

Multigrades : 2 year warranty

Model name




PH 600 S 280-5

Name of series Output power Function Nominal input voltage Nominal output voltage
S: Simple function

Features

- CE marking (Low Voltage Directive)
- Compact DC-DC power module
- Large power 300W/600W
- High power density: 61.6W/inch³ (600W type)
- 600W type: 146 × 86 × 12.7mm
- 300W type: 83 × 86 × 12.7mm
- Wide baseplate temperature: -20 ~ +100°C
- Conduction cooling
- Wide input voltage range
- DC48V input: DC36 ~ 76V, DC280V input: DC200 ~ 400V
- 2 year warranty

Specifications

1. Input voltage range	PH300S48(300W type): DC36 ~ 76V PH300S280(300W type)/PH600S280(600W type): DC200 ~ 400V
2. Output voltage range	±10% (12V ~ 28V types), -10 ~ +20% (3.3V, 5V and 48V types) (by TRM terminal and external resistor) Output voltage range is different according to input voltage.
3. Line regulation	0.4%, within nominal input voltage range at constant load (3.3V output: 20mV)
4. Load regulation	0.8%, no load to full load at constant input voltage (3.3V output: 40mV)
5. Cooling	Conduction cooling (Heatsink & airflow has to be chosen according to instruction manual)
6. Operating ambient temperature	Baseplate temperature: -20 ~ +100°C (Output derating is different according to condition) Ambient temperature: above -20°C
7. Withstand voltage	DC48V input/input to output: 1.5kVAC, Input to baseplate: 1.5kVAC for 1 min. DC280V input/input to output: 3.0kVAC, Input to baseplate: 2.5kVAC for 1 min.
8. Safety standard	Approved by UL1950  , CSA950(C-UL)  and EN60950  (BSI)
9. Functions	Over voltage protection (Can be reset by external signal), Over current protection, Thermal protection Remote sensing, Remote on/off control, Inverter good signal (IOG terminal) CS terminal (Load current balancing is possible with external control circuit under parallel operation)

Product lineup

Model name		Output voltage	Output current	Output power	UL	CSA	EN
PH300S48 (input 48VDC)	PH300S-48-3.3	3.3V	50A	165W	○	○	○
	PH300S-48-5	5V	50A	250W	○	○	○
	PH300S-48-12	12V	25A	300W	○	○	○
	PH300S-48-15	15V	20A	300W	○	○	○
	PH300S-48-24	24V	12.6A	302.4W	○	○	○
	PH300S-48-28	28V	10.8A	302.4W	○	○	○
	PH300S-48-48	48V	6.3A	302.4W	○	○	○
PH300S280 (input 280VDC)	PH300S-280-3.3	3.3V	50A	165W	○	○	○
	PH300S-280-5	5V	50A	250W	○	○	○
	PH300S-280-12	12V	25A	300W	○	○	○
	PH300S-280-15	15V	20A	300W	○	○	○
	PH300S-280-24	24V	12.5A	300W	○	○	○
	PH300S-280-28	28V	10.8A	302.4W	○	○	○
	PH300S-280-48	48V	6.3A	302.4W	○	○	○
PH600S280 (input 280VDC)	PH600S-280-3.3	3.3V	100A	330W	○	○	○
	PH600S-280-5	5V	100A	500W	○	○	○
	PH600S-280-12	12V	50A	600W	○	○	○
	PH600S-280-15	15V	40A	600W	○	○	○
	PH600S-280-24	24V	25A	600W	○	○	○
	PH600S-280-28	28V	21.5A	602W	○	○	○
	PH600S-280-48	48V	12.5A	600W	○	○	○

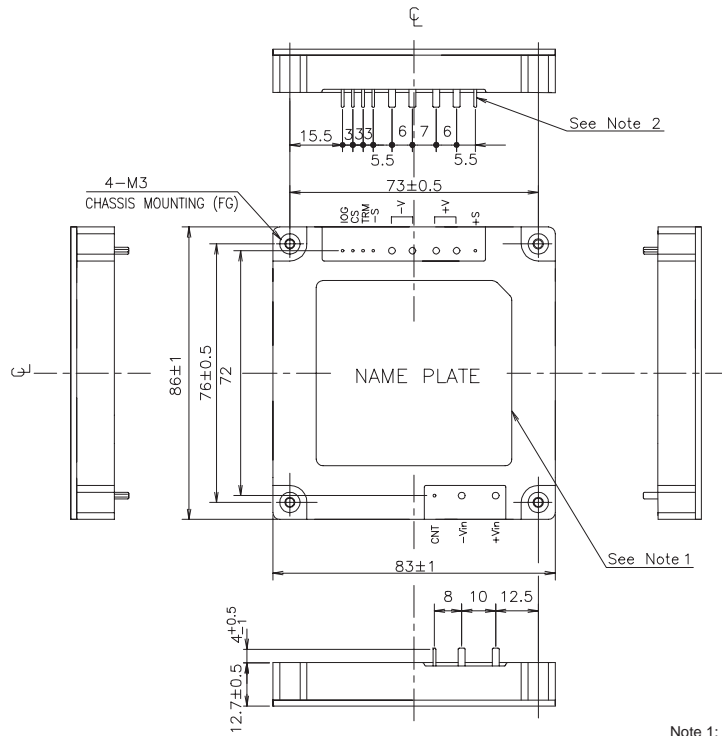
- Request customer specification for further details of specifications, outline, characteristics, etc.
Read the instruction manual before usage.
- Contact us about delivery before ordering.

○ : Safety standard approved

● Recommended Heatsink  P212

PH300S/PH600S-SERIES

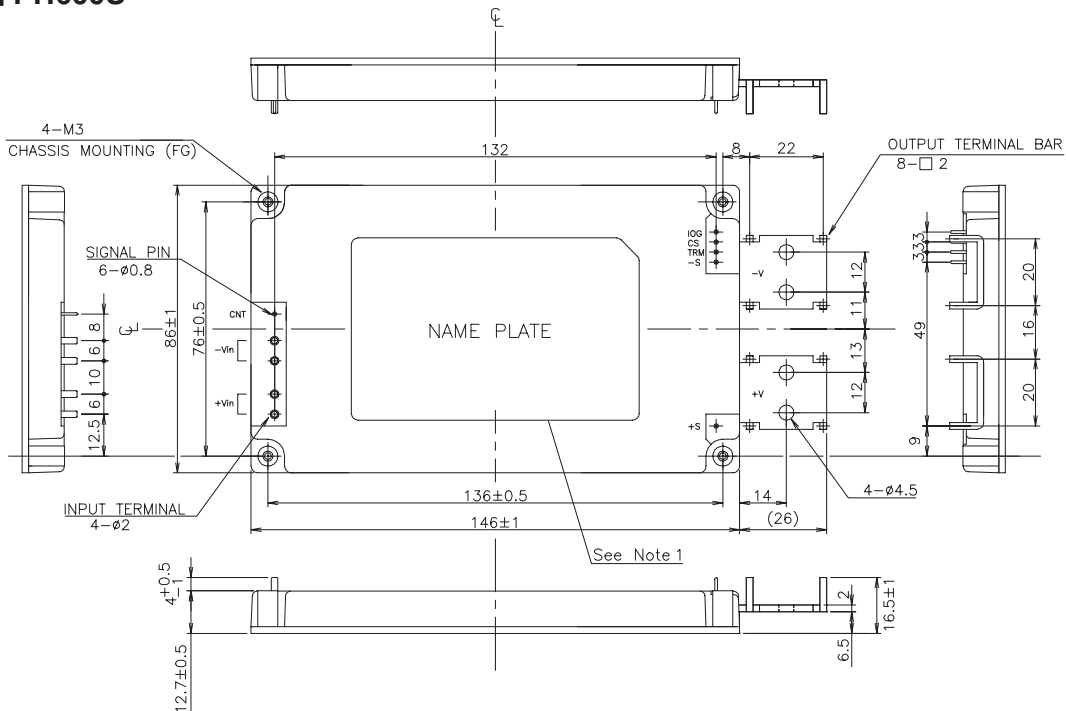
■ PH300S



(Unit: mm)

Note 1: "Model name, Input voltage range, Nominal output voltage, Maximum output current and country of manufacture are shown here."
Note 2: Input & output terminal.....6-ø2
6-ø8

■ PH600S



(Unit: mm)

Note 1: "Model name, Input voltage range, Nominal output voltage, Maximum output current and country of manufacture are shown here."