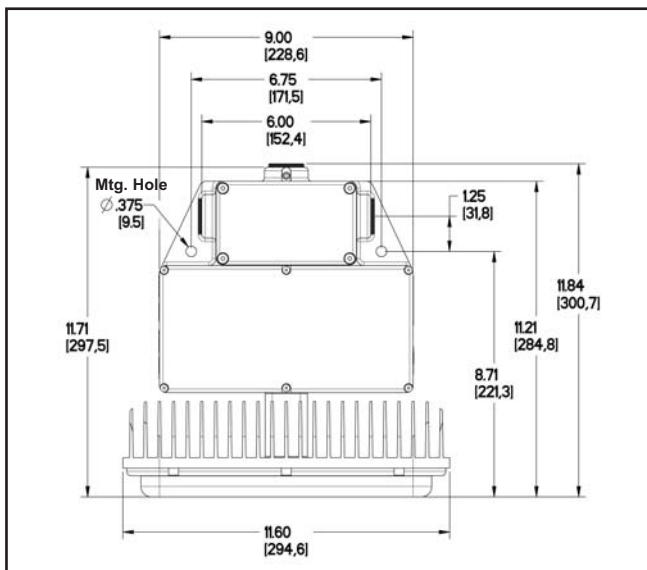




STW Series LED White Downlight



Dimensions in Inches [mm]

Certifications & Ratings:

- ▷ Certified to UL844 / NEMA 4X / UL1598 / UL1598A / CSA 22.2
- ▷ IP66 rated

Features & Benefits:

- ▷ Low power consumption
- ▷ Instant on/off response
- ▷ Weather/corrosion resistant lamp assembly and housing
- ▷ Universal input (120-277 VAC), 50/60 Hz
- ▷ *Resistant to shock (IEC 68-2-27) and vibration (FAA 150/5345-46C)
- ▷ 5 year warranty
- ▷ 70% lumen maintenance over 60,000 operating hours

Order Codes:

150 Watt Equivalent	
STW-00-050-1111-201	STW 150 - 180 Degree
STW-00-050-1111-301	STW 150 - 360 Degree
*STW-00-050-1111-202	STW 150 - 180 Degree, HVS
*STW-00-050-1111-302	STW 150 - 360 Degree, HVS

DC versions available - consult factory

* HVS order codes are High Vibration & Shock resistant.

Application:

Dialight introduces the new state of the art white STW Series LED luminaire for tough and harsh industrial locations. Its rugged solid state design creates a new era where failed lamps and expensive relamping costs become a thing of the past. This light incorporates both cutting edge LED technology along with proprietary optics to achieve area lighting comparable with other traditional light sources. By focusing the light where it is needed, this luminaires is the most efficient light source available for industrial area lighting applications. Its green credentials include significant energy consumption savings and reducing light pollution.

Whether your application is a power plant, paper mill, steel mill or bottling this fixture offers improved performance across the board.

Mechanical Information:

Container Dimensions: 15" X 16" X 10"
381mm x 407mm x 254mm

Container Weight: 19 lbs (8.2 kg)

Mounting: Threaded 1" NPT on 3 sides of splice box

Electrical specifications:

Operating Voltage: 120-277 VAC, 50/60 Hz

Power Consumption: 100 W

Operating Temp: -40°F to +133°F (-40°C to +55°C)

Harmonics: IEC 6100-3-2

Surge / Lightning Protection: 1 kV line to line
2 kV line to ground

THD: < 20 %

Power Factor: > 0.9

Material:

Body: Grey epoxy powder coat aluminum

Lens: UV stabilized Polycarbonate with enhanced abrasive resistance

Heat sink: Clear anodized aluminum

Accessories (hardware): Stainless steel

Photometric Information:

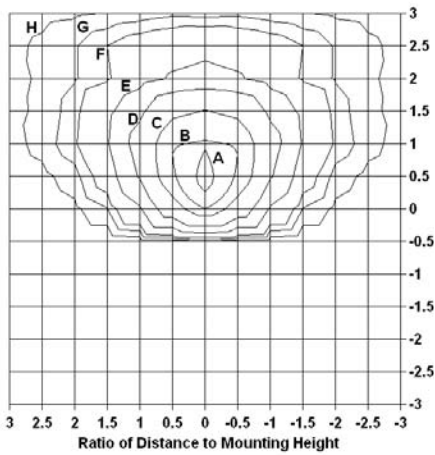
CRI (typ): 70

CCT: 4500-7000K

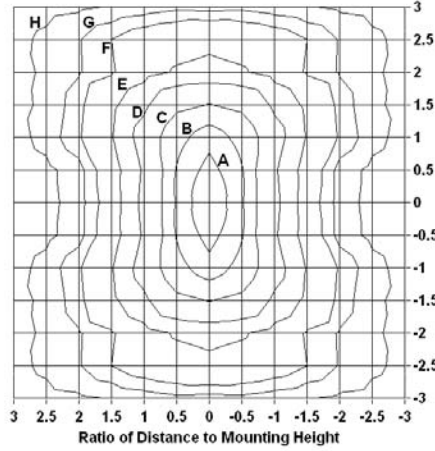
250 Watt Equivalent	
STW-00-250-1111-201	STW 250 - 180 Degree
STW-00-250-1111-301	STW 250 - 360 Degree
*STW-00-250-1111-202	STW 250 - 180 Degree, HVS
*STW-00-250-1111-302	STW 250 - 360 Degree, HVS

Light Measurement Data

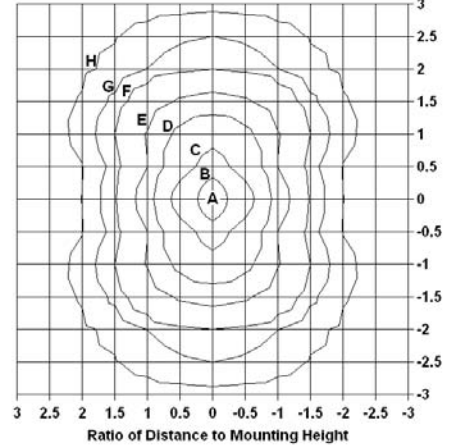
180 Degree Pattern



Back to Back 360 Degree Pattern



360 Degree Pattern



Each box is one mounting height.

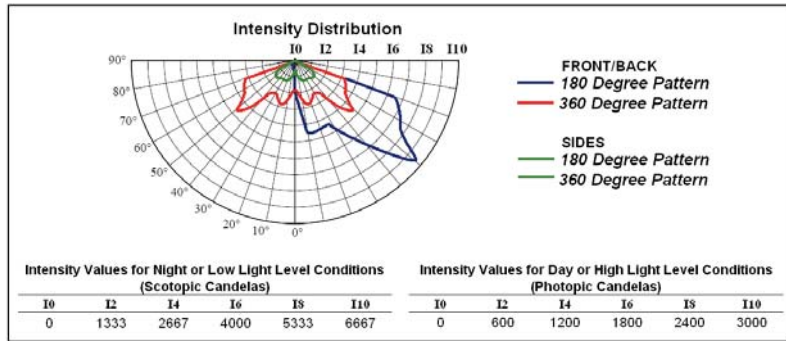
150 Watt Equivalent Fixtures

Illuminance Values for Night or Low Light Level Conditions (Scotopic Footcandles)

Mounting Height (ft)	A	B	C	D	E	F	G	H
4	136.80	91.20	72.96	45.60	27.36	13.68	9.12	4.56
8	34.20	22.80	18.24	11.40	6.84	3.42	2.28	1.14
12	15.20	10.13	8.11	5.07	3.04	1.52	1.01	0.51
16	8.55	5.70	4.56	2.85	1.71	0.86	0.57	0.29
20	5.47	3.65	2.92	1.82	1.09	0.55	0.36	0.18
25	3.50	2.33	1.87	1.17	0.70	0.35	0.23	0.12
30	2.43	1.62	1.30	0.81	0.49	0.24	0.16	0.08
35	1.79	1.19	0.95	0.60	0.36	0.18	0.12	0.06

Illuminance Values for Day or High Light Level Conditions (Photopic Footcandles)

Mounting Height (ft)	A	B	C	D	E	F	G	H
4	60.00	40.00	32.00	20.00	12.00	6.00	4.00	2.00
8	15.00	10.00	8.00	5.00	3.00	1.50	1.00	0.50
12	6.67	4.44	3.56	2.22	1.33	0.67	0.44	0.22
16	3.75	2.50	2.00	1.25	0.75	0.38	0.25	0.13
20	2.40	1.60	1.28	0.80	0.48	0.24	0.16	0.08
25	1.54	1.02	0.82	0.51	0.31	0.15	0.10	0.05
30	1.07	0.71	0.57	0.36	0.21	0.11	0.07	0.04
35	0.78	0.52	0.42	0.26	0.16	0.08	0.05	0.03



8,300 Total Lumens for Night or Low Light Level Conditions (scotopic)

3,640 Total Lumens for Day or High Light Level Conditions (photopic)

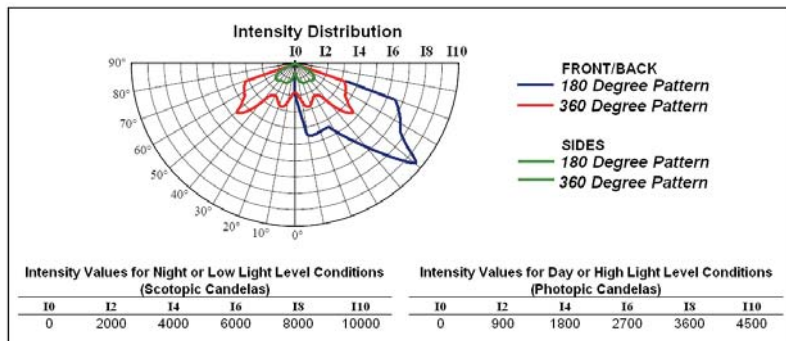
250 Watt Equivalent Fixtures

Illuminance Values for Night or Low Light Level Conditions (Scotopic Footcandles)

Mounting Height (ft)	A	B	C	D	E	F	G	H
4	205.20	136.80	109.44	68.40	41.04	20.52	13.68	6.84
8	51.30	34.20	27.36	17.10	10.26	5.13	3.42	1.71
12	22.80	15.20	12.16	7.60	4.56	2.28	1.52	0.76
16	12.83	8.55	6.84	4.28	2.57	1.28	0.86	0.43
20	8.21	5.47	4.38	2.74	1.64	0.82	0.55	0.27
25	5.25	3.50	2.80	1.75	1.05	0.53	0.35	0.18
30	3.65	2.43	1.95	1.22	0.73	0.36	0.24	0.12
35	2.68	1.79	1.43	0.89	0.54	0.27	0.18	0.09

Illuminance Values for Day or High Light Level Conditions (Photopic Footcandles)

Mounting Height (ft)	A	B	C	D	E	F	G	H
4	90.00	60.00	48.00	30.00	18.00	9.00	6.00	3.00
8	22.50	15.00	12.00	7.50	4.50	2.25	1.50	0.75
12	10.00	6.67	5.33	3.33	2.00	1.00	0.67	0.33
16	5.63	3.75	3.00	1.88	1.13	0.56	0.38	0.19
20	3.60	2.40	1.92	1.20	0.72	0.36	0.24	0.12
25	2.30	1.54	1.23	0.77	0.46	0.23	0.15	0.08
30	1.60	1.07	0.85	0.53	0.32	0.16	0.11	0.05
35	1.18	0.78	0.63	0.39	0.24	0.12	0.08	0.04



12,500 Total Lumens for Night or Low Light Level Conditions (scotopic)

5,500 Total Lumens for Day or High Light Level Conditions (photopic)

IES Files: Available at www.dialight.com

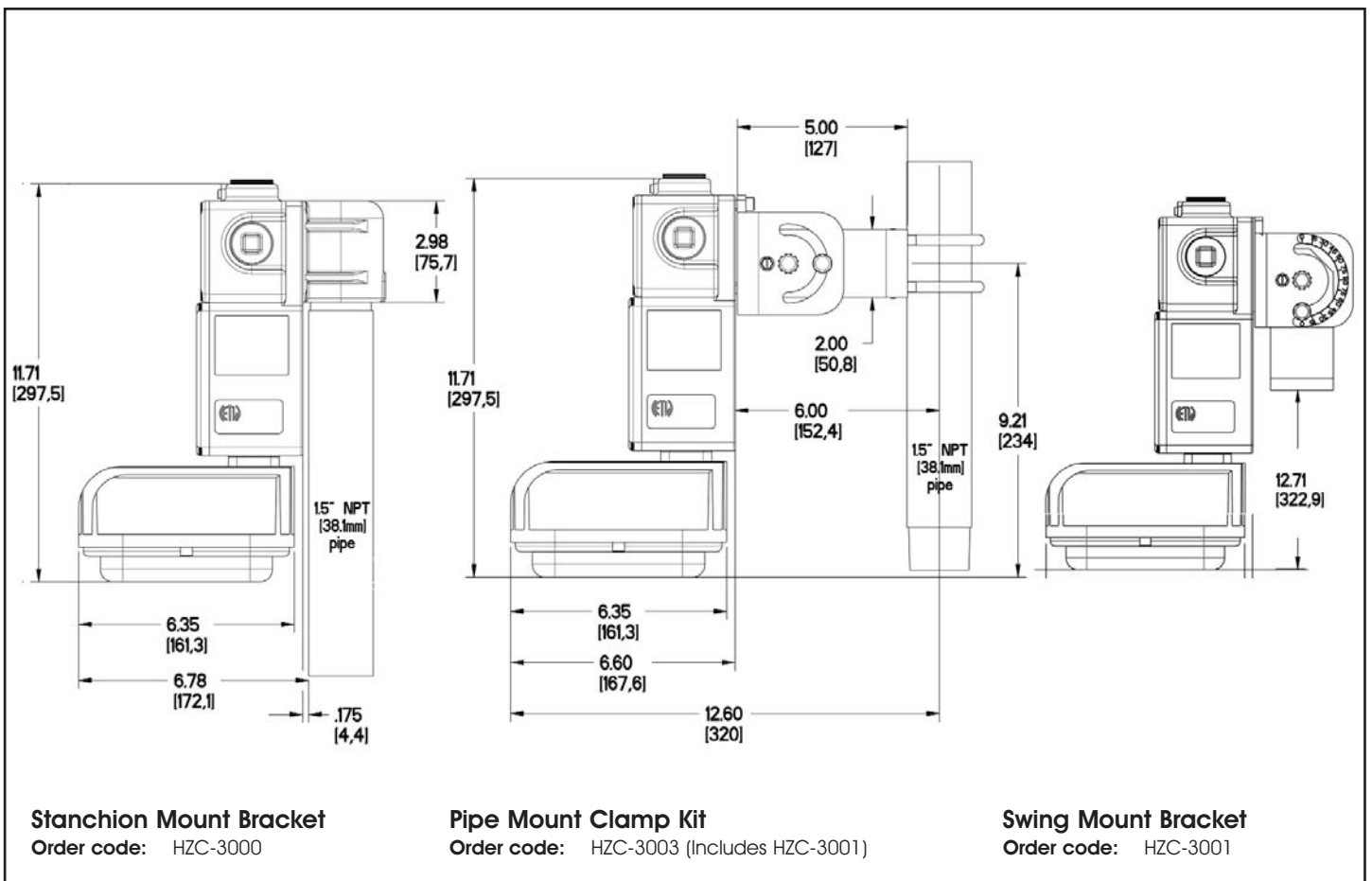
Stanchion Mount Bracket

Pipe Mount Clamp Kit

180° Adjustable Swing Mount Bracket

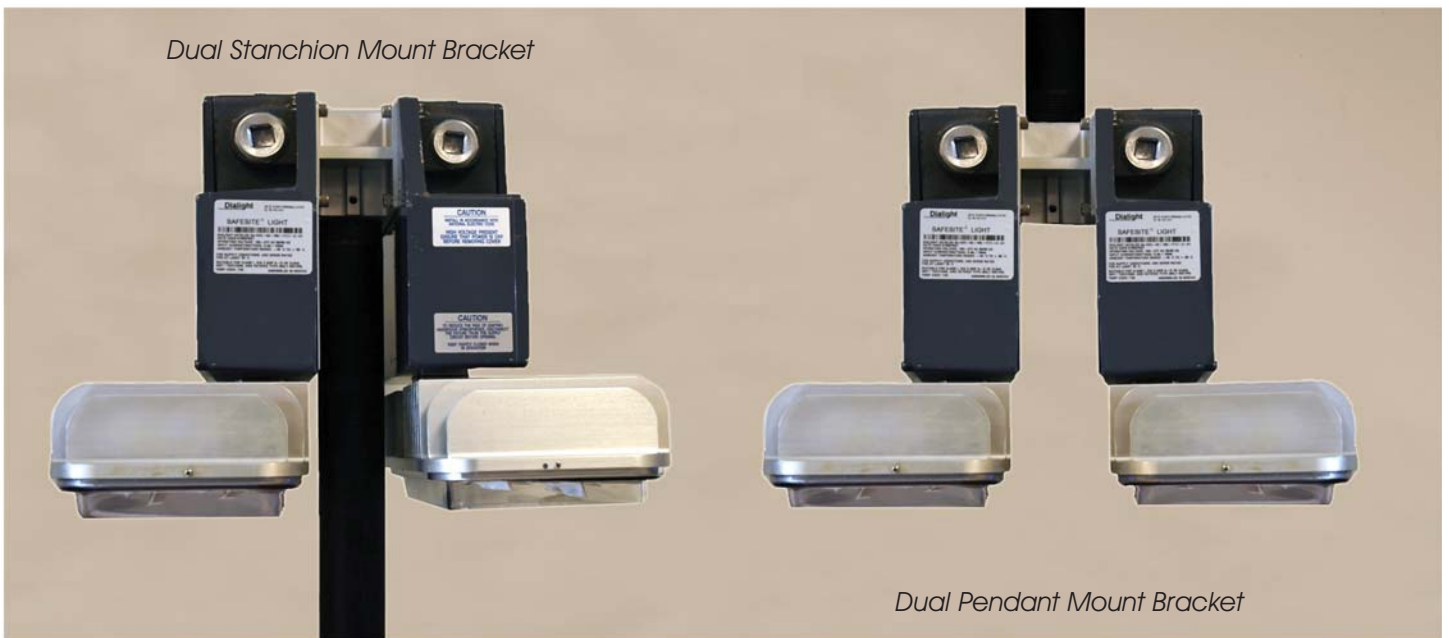


STW Series Downlight Fixture Mounting Brackets - Single Units



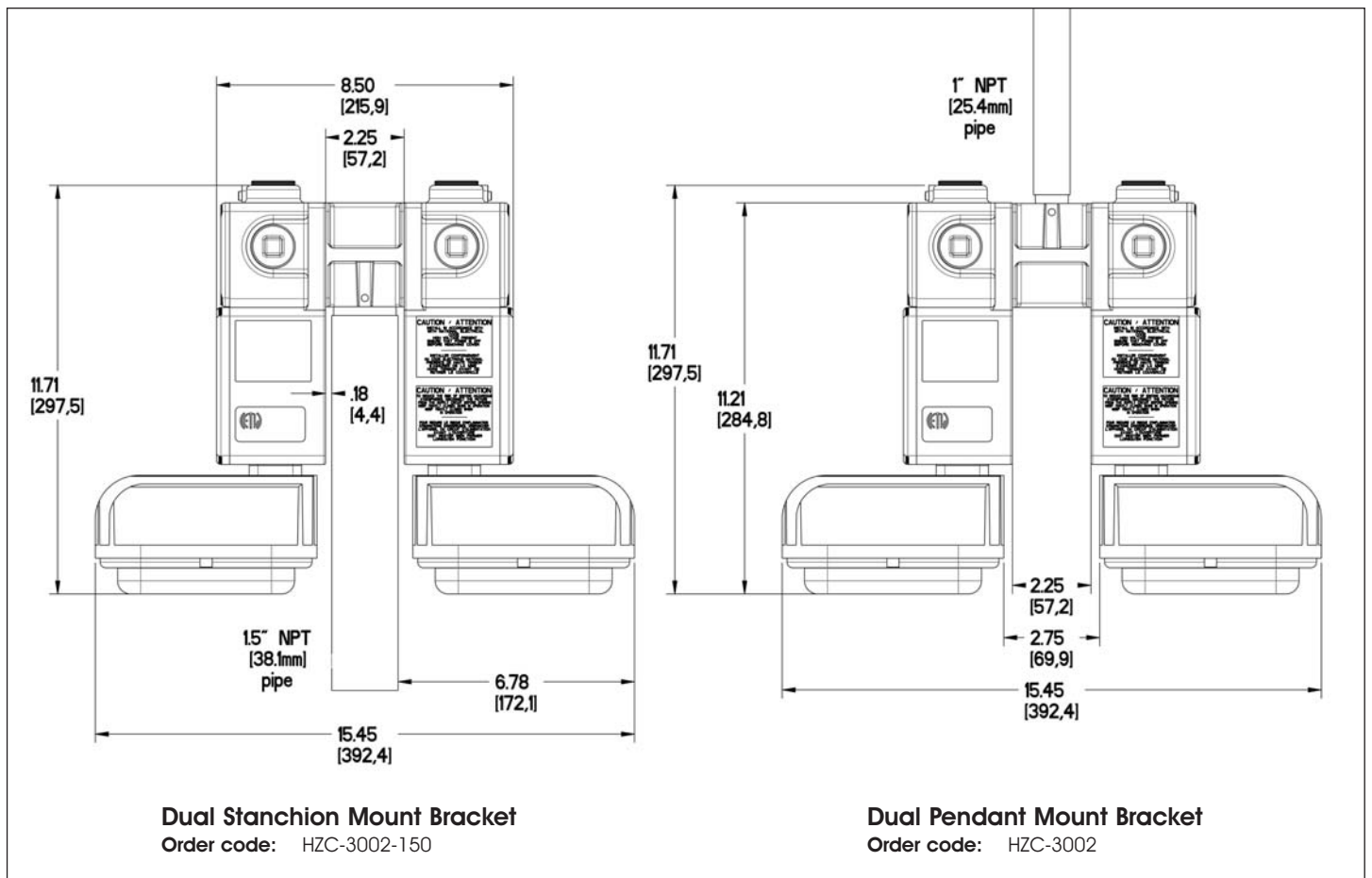
Dimensions in Inches [mm]

Dual Stanchion Mount Bracket



Dual Pendant Mount Bracket

STW Series Downlight Fixture Mounting Brackets - Dual Units



Dimensions in Inches [mm]

MDTFSTWBROCHURE_A