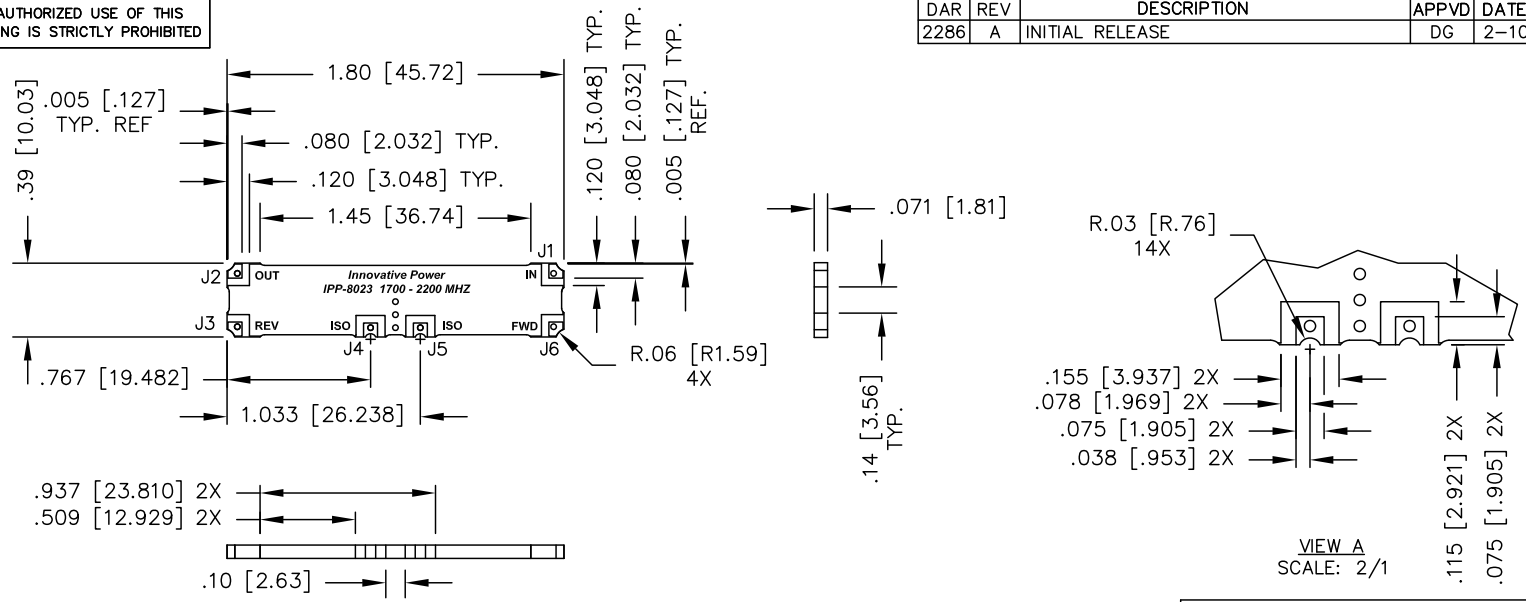


UNAUTHORIZED USE OF THIS DRAWING IS STRICTLY PROHIBITED

DAR	REV	DESCRIPTION	APPVD	DATE
2286	A	INITIAL RELEASE	DG	2-10



- NOTES:**
- SEE SMD COUPLER APPLICATION NOTE FOR FURTHER INFORMATION.
 - PARTS WITH RoHS MATT TIN AND RoHS NICKEL GOLD FINISHES ARE RoHS COMPLIANT.
 - AVAILABLE IN TAPE AND REEL. SEE SMD COUPLER APPLICATION NOTE FOR FURTHER INFORMATION.

ELECTRICAL SPECIFICATIONS

FREQUENCY: 1700 - 2200 MHz.
 INSERTION LOSS: <0.50 dB
 VSWR: <1.25:1
 DIRECTIVITY: >20dB
 FORWARD COUPLING: 38.0±1dB
 REFL. COUPLING: 14.5±1dB
 POWER: 175 WATT
 TEMPERATURE: -55°C TO 85°C

FINISH	
P/N	TYPE
IPP-8023	TIN/LEAD
IPP-8023RT	RoHS MATTE TIN
IPP-8023RG	RoHS NICKEL GOLD

PORT CONFIGURATION				
INPUT	OUTPUT	FORWARD COUPLED	REFLECTED COUPLED	ISOLATION
J1	J2	J6 -38.0dB	J3 -14.5dB	J4,J5 ADD 50Ω TERMINATION

MATERIAL	DWN DG	DATE 1-10	Innovative Power Products
FINISH SEE FINISH CHART	ENG TJD	DATE 1-10	
TOLERANCE .xx ±.02 [.50] IN [MM] .xxx ±.010 [.254] ANG. ±1/2°	MANUF	DATE	TITLE OUTLINE
	CAGE CODE: 437R2		SMD COUPLER, DDC, 1700 - 2200 MHz. 175W
	SHEET 1 OF 1	SCALE 2:1	SIZE B P/N IPP-8023*
			REV. A