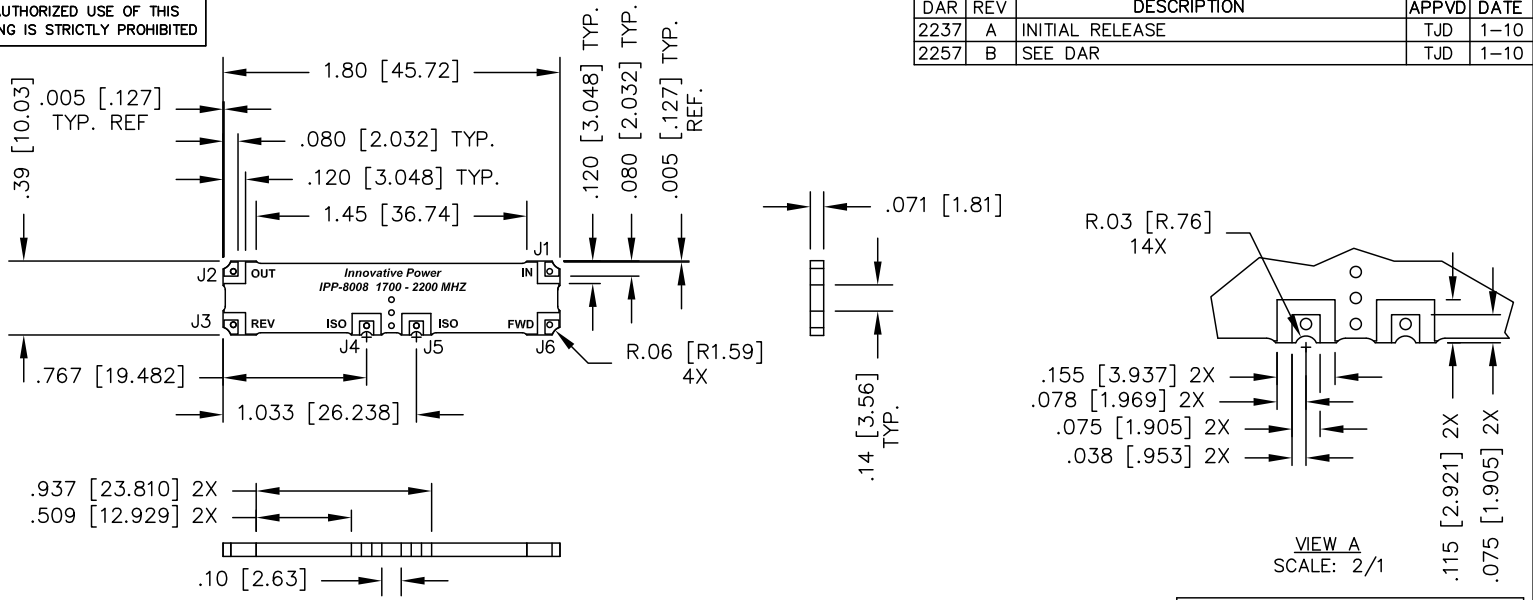


UNAUTHORIZED USE OF THIS DRAWING IS STRICTLY PROHIBITED

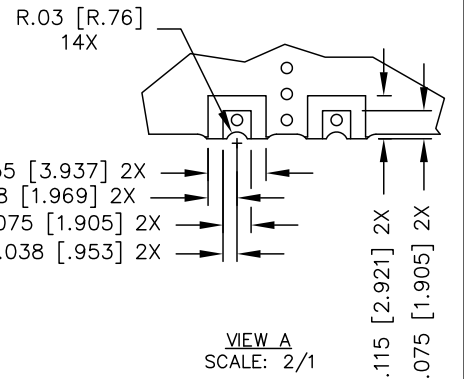
DAR	REV	DESCRIPTION	APPVD	DATE
2237	A	INITIAL RELEASE	TJD	1-10
2257	B	SEE DAR	TJD	1-10



- NOTES:**
- SEE SMD COUPLER APPLICATION NOTE FOR FURTHER INFORMATION.
 - PARTS WITH RoHS MATT TIN AND RoHS NICKEL GOLD FINISHES ARE RoHS COMPLIANT.
 - AVAILABLE IN TAPE AND REEL. SEE SMD COUPLER APPLICATION NOTE FOR FURTHER INFORMATION.

ELECTRICAL SPECIFICATIONS

FREQUENCY: 1700 - 2200 MHz.
 INSERTION LOSS: <0.50 dB
 VSWR: <1.25:1
 DIRECTIVITY: >20dB
 FORWARD COUPLING: 34.0±1dB
 REFL. COUPLING: 14.5±1dB
 POWER: 175 WATT
 TEMPERATURE: -55°C TO 85°C



FINISH	
P/N	TYPE
IPP-8008	TIN/LEAD
IPP-8008RT	RoHS MATTE TIN
IPP-8008RG	RoHS NICKEL GOLD

PORT CONFIGURATION				
INPUT	OUTPUT	FORWARD COUPLED	REFLECTED COUPLED	ISOLATION
J1	J2	J6 -34.0dB	J3 -14.5dB	J4,J5 ADD 50Ω TERMINATION

MATERIAL	DWN DG	DATE 10/09	
FINISH	ENG TJD	DATE 10/09	
SEE FINISH CHART	MANUF RR	DATE 10/09	
TOLERANCE	CAGE CODE: 437R2		TITLE
.XX ±.02 [.50]	SHEET OF 1 1	SCALE 2:1	OUTLINE
IN [MM] .XXX ±.010 [.254]			SMD COUPLER, DDC, 1700 - 2200 MHz. 175W
ANG. ±1/2°			SIZE B P/N IPP-8008*
			REV. B