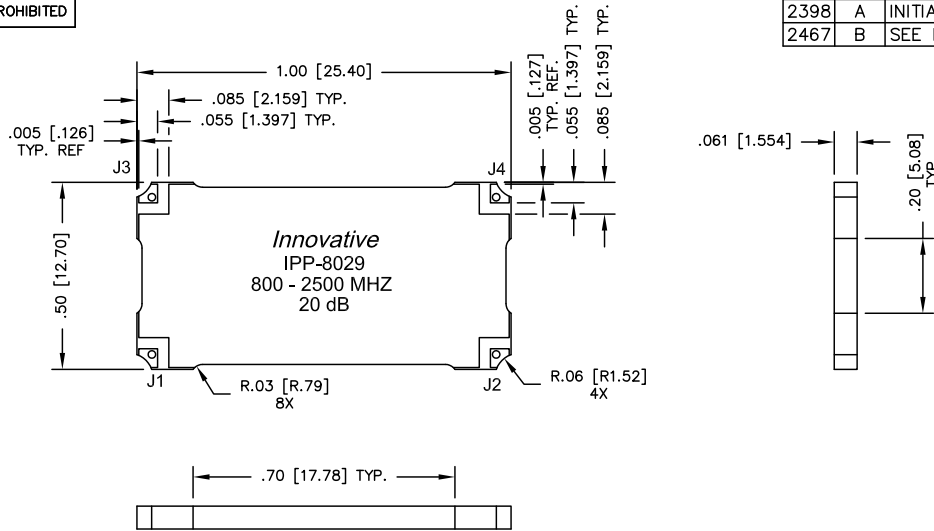


UNAUTHORIZED USE OF THIS
DRAWING IS STRICTLY PROHIBITED

DAR	REV	DESCRIPTION	APPVD	DATE
2398	A	INITIAL RELEASE	DG	3-10
2467	B	SEE DAR	DG	5-10



FINISH	
P/N	TYPE
IPP-8029	TIN/LEAD
IPP-8029RT	RoHS MATTE TIN
IPP-8029RG	RoHS NICKEL GOLD

NOTES:

1. SEE SMD COUPLER APPLICATION NOTE FOR FURTHER INFORMATION.
2. PARTS WITH RoHS MATT TIN AND RoHS NICKEL GOLD FINISHES ARE RoHS COMPLIANT.
3. AVAILABLE IN TAPE AND REEL. SEE SMD COUPLER APPLICATION NOTE FOR FURTHER INFORMATION.

ELECTRICAL SPECIFICATIONS

FREQUENCY:	800 - 2500 MHz.
INSERTION LOSS:	<0.25 dB
VSWR:	<1.25:1
COUPLING:	20dB ±1.5dB
COUPLED FLATNESS:	±0.75 dB
DIRECTIVITY:	>20 dB
POWER:	150 WATT
TEMPERATURE:	-55°C TO +85°C

PORT CONFIGURATION			
INPUT	OUTPUT	FORWARD COUPLED	REFLECTED COUPLED
J1	J2	J3	J4 ADD 50Ω TERMINATION
J1	J2	J3 ADD 50Ω TERMINATION	J4
J2	J1	J4	J3 ADD 50Ω TERMINATION
J2	J1	J4 ADD 50Ω TERMINATION	J3

MATERIAL	DWN S.Cornell	DATE	3-25-10	Innovative Power Products
FINISH	ENG DG	DATE	3-10	
SEE FINISH CHART	MANUF	DATE		TITLE
TOLERANCE	CAGE CODE: 437R2			OUTLINE, SMD COUPLER
.xx ±.02 [.50]	SHEET	OF	SCALE	SDC, 800-2500 MHz. 20dB 150W
.xxx ±.010 [.254]	1	1	4:1	SIZE
ANG. ±1/2°				P/N
				IPP-8029
				REV.
				B