

FAMILY SERIES

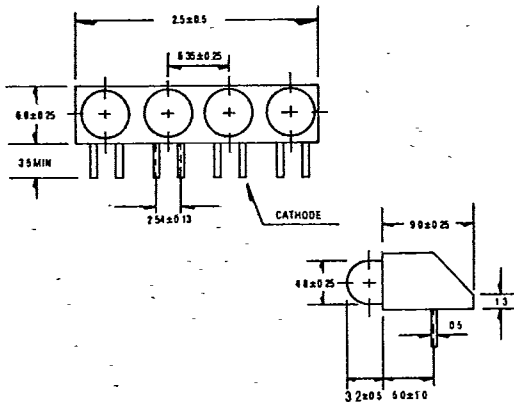
SSF-LXH400 (40)

MAIN FEATURES

- EASY P.C. BOARD INSTALLATIONS
- FOUR UNITS IN ONE HOUSING
- WIDE VIEWING ANGLE (80°)
- FOUR COLOR CHOICES
- LOW CURRENT
- DIALCO 550 SERIES COMPATIBLE

PACKAGE DIMENSIONS

(Dimensions in Millimeters)



HOUSING MATERIAL:
Black Polycarbonate

WHERE AND HOW TO USE THIS SERIES

- P.C. BOARD INDICATORS
- CIRCUIT FAULT INDICATORS—P.C. MOUNTABLE
- LOGIC STATUS INDICATORS—P.C. MOUNTABLE

Limits of Safe Operation (at 25°C)

Color	Power Dissip.	Power Derating Over +25°C/°C	Continuous IF Max.
Red	170 mW	-1.4 mW	50 mA
Br-Red	110 mW	-1.2 mW	35 mA
Green	110 mW	-1.2 mW	35 mA
Yellow	110 mW	-1.2 mW	35 mA

Peak Forward Current (1µs Pulse .03% Duty Cycle) 1.0 A

Storage and Operating Temperature -55 to +100°C

Soldering Time @ 230°C 5 Sec. Max.

PART SELECTION AND APPLICATION INFORMATION (RATINGS AT 25°C AMBIENT)

Lumex Part Number	Use Code	Current Rating Per Led	Voltage Rating Per Led	Light Color Each Led	Epoxy Lens Color Each Led	Avg Brightness At 20 mA (IF)	Lumex-Lite Led Used
SSF-LXH400RD	A,B	10-50 MA (IF)	1.5-2.1 VDC	Red (655NM)	Red Diffused	3.0 MCD	SSL-LX4072RD
SSF-LXH400ID	A,B	5-35 MA (IF)	1.8-2.8 VDC	Br-Red (635NM)	Red Diffused	10.0 MCD	SSL-LX4072ID
SSF-LXH400GD	A,B	5-35 MA (IF)	1.8-2.8 VDC	Green (565NM)	Green Diffused	6.0 MCD	SSL-LX4072GD
SSF-LXH400YD	A,B	5-35 MA (IF)	1.8-2.8 VDC	Yellow (585NM)	Yellow Diffused	6.0 MCD	SSL-LX4072YD

ANY COLOR COMBINATIONS AVAILABLE AT NO ADDED COST

Use Code (A) Front Panels (B) Fault Indicator (C) Backlighting (D) Bright Point or Spot

See page 6 for typical operating curves