

## Dual and Quad Rail-to-Rail Output, Picoamp Input Precision Op Amps

April 2000

### FEATURES

- Offset Voltage: 50 $\mu$ V Maximum (LT1881A)
- Input Bias Current: 200pA Maximum (LT1881A)
- Offset Voltage Drift: 0.8 $\mu$ V/ $^{\circ}$ C Maximum
- Rail-to-Rail Output Swing
- Supply Range: 2.7V to 36V
- Operates with Single or Split Supplies
- Open-Loop Voltage Gain: 1 Million Minimum
- 1mA Maximum Supply Current Per Amplifier
- Stable at  $A_V = 1$ ,  $C_L = 1000$ pF
- Standard Pinouts

### APPLICATIONS

- Thermocouple Amplifiers
- Bridge Transducer Conditioners
- Instrumentation Amplifiers
- Battery-Powered Systems
- Photo Current Amplifiers


### DESCRIPTION

The LT<sup>®</sup>1881 and LT1882 op amps bring high accuracy input performance to amplifiers with rail-to-rail output swing. Input bias currents and capacitive load driving capabilities are superior to the similar LT1884 and LT1885 amplifiers, at the cost of a slight loss in speed. Input offset voltage is trimmed to less than 50 $\mu$ V and the low drift maintains this accuracy over the operating temperature range. Input bias currents are an ultralow 200pA maximum.

The amplifiers work on any total power supply voltage between 2.7V and 36V (fully specified from 5V to  $\pm 15$ V). Output voltage swings to within 40mV of the negative supply and 220mV of the positive supply make these amplifiers good choices for low voltage single supply operation.

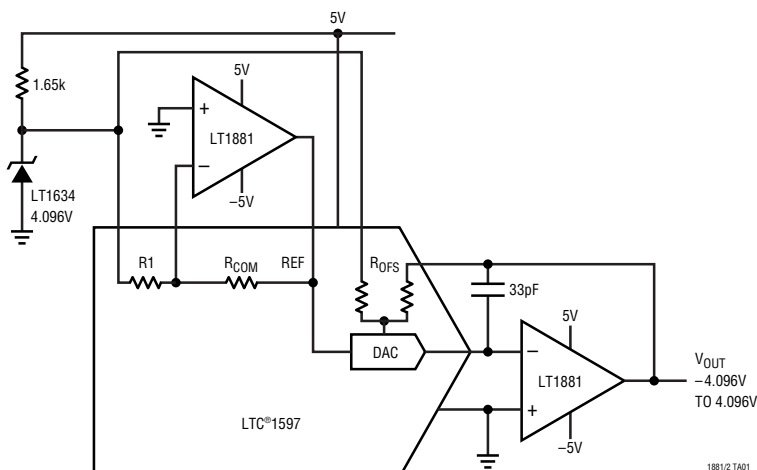
Capacitive loads up to 1000pF can be driven directly in unity-gain follower applications.

The dual LT1881 and LT1881A are available with standard pinouts in S8 and PDIP packages. The quad LT1882 is in a 14-pin SO package. For a higher speed device with similar DC specifications, see the LT1884/LT1885.

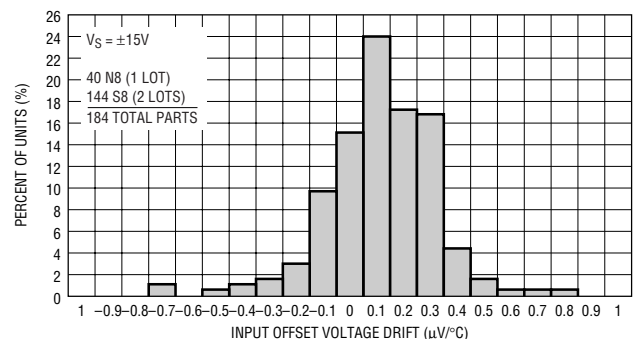
 LTC and LT are registered trademarks of Linear Technology Corporation.

### TYPICAL APPLICATION

16-Bit Voltage Output DAC on  $\pm 5$ V Supply



TC  $V_{OS}$  Distribution, Industrial Grade

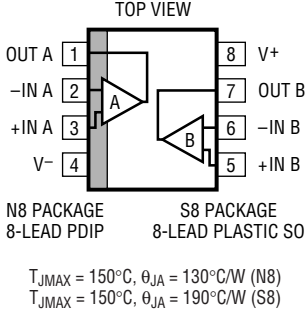
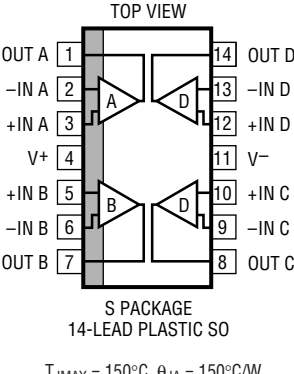


# LT1881/LT1882

## ABSOLUTE MAXIMUM RATINGS (Note 1)

|  |                   |  |  |
|--|-------------------|--|--|
| Supply Voltage ( $V^+$ to $V^-$ ) .....      | 40V               | Operating Temperature Range (Note 4) ..    | $-40^{\circ}\text{C}$ to $85^{\circ}\text{C}$  |
| Differential Input Voltage (Note 2) .....    | $\pm 10\text{V}$  | Specified Temperature Range (Note 5) ...   | $-40^{\circ}\text{C}$ to $85^{\circ}\text{C}$  |
| Input Voltage .....                          | $V^+$ to $V^-$    | Maximum Junction Temperature .....         | $150^{\circ}\text{C}$                          |
| Input Current (Note 2) .....                 | $\pm 10\text{mA}$ | Storage Temperature Range .....            | $-65^{\circ}\text{C}$ to $150^{\circ}\text{C}$ |
| Output Short-Circuit Duration (Note 3) ..... | Indefinite        | Lead Temperature (Soldering, 10 sec) ..... | $300^{\circ}\text{C}$                          |

## PACKAGE/ORDER INFORMATION

|   |                                  |   |  |                      |
|---|----------------------------------|---|--|----------------------|
|  <p>TOP VIEW</p> <p>OUT A 1 8 V+</p> <p>-IN A 2 7 OUT B</p> <p>+IN A 3 6 -IN B</p> <p>V- 4 5 +IN B</p> <p>N8 PACKAGE 8-LEAD PDIP</p> <p>S8 PACKAGE 8-LEAD PLASTIC SO</p> <p><math>T_{jMAX} = 150^{\circ}\text{C}</math>, <math>\theta_{JA} = 130^{\circ}\text{C/W}</math> (N8)</p> <p><math>T_{jMAX} = 150^{\circ}\text{C}</math>, <math>\theta_{JA} = 190^{\circ}\text{C/W}</math> (S8)</p> | ORDER PART NUMBER                |  <p>TOP VIEW</p> <p>OUT A 1 14 OUT D</p> <p>-IN A 2 13 -IN D</p> <p>+IN A 3 12 +IN D</p> <p>V+ 4 11 V-</p> <p>+IN B 5 10 +IN C</p> <p>-IN B 6 9 -IN C</p> <p>OUT B 7 8 OUT C</p> <p>S PACKAGE 14-LEAD PLASTIC SO</p> <p><math>T_{jMAX} = 150^{\circ}\text{C}</math>, <math>\theta_{JA} = 150^{\circ}\text{C/W}</math></p> | ORDER PART NUMBER  |                      |
|   |                                  |   | LT1881CN8<br>LT1881IN8<br>LT1881CS8<br>LT1881IS8<br>LT1881ACN8<br>LT1881AIN8<br>LT1881ACS8<br>LT1881AIS8 | LT1882CS<br>LT1882IS |
|   |                                  |   | S8 PART MARKING  |                      |
|   | 1881<br>1881I<br>1881A<br>1881AI |   |  |                      |

Consult factory for Military grade parts.

## ELECTRICAL CHARACTERISTICS

The ● denotes the specifications which apply over the full operating temperature range, otherwise specifications are at  $T_A = 25^{\circ}\text{C}$ . Single supply operation  $V_{EE} = 0$ ,  $V_{CC} = 5\text{V}$ ;  $V_{CM} = V_{CC}/2$  unless otherwise noted. (Note 5)

| SYMBOL   | PARAMETER                            | CONDITIONS                                       | MIN | TYP | MAX | UNITS                          |
|----------|--------------------------------------|--|-----|-----|-----|--------------------------------|
| $V_{OS}$ | Input Offset Voltage (LT1881A)       | $0^{\circ}\text{C} < T_A < 70^{\circ}\text{C}$   |     | 25  | 50  | $\mu\text{V}$                  |
|          |                                      | $-40^{\circ}\text{C} < T_A < 85^{\circ}\text{C}$ | ●   |     | 85  | $\mu\text{V}$                  |
|          |                                      |  | ●   |     | 110 | $\mu\text{V}$                  |
|          | Input Offset Voltage (LT1881/LT1882) | $0^{\circ}\text{C} < T_A < 70^{\circ}\text{C}$   |     | 30  | 80  | $\mu\text{V}$                  |
|          |                                      | $-40^{\circ}\text{C} < T_A < 85^{\circ}\text{C}$ | ●   |     | 125 | $\mu\text{V}$                  |
|          |                                      |  | ●   |     | 150 | $\mu\text{V}$                  |
|          | Input Offset Voltage Drift (Note 6)  | $0^{\circ}\text{C} < T_A < 70^{\circ}\text{C}$   | ●   | 0.3 | 0.8 | $\mu\text{V}/^{\circ}\text{C}$ |
|          |                                      | $-40^{\circ}\text{C} < T_A < 85^{\circ}\text{C}$ | ●   | 0.3 | 0.8 | $\mu\text{V}/^{\circ}\text{C}$ |
|          |                                      |  |     |     |     |                                |
| $I_{OS}$ | Input Offset Current (LT1881A)       | $0^{\circ}\text{C} < T_A < 70^{\circ}\text{C}$   |     | 100 | 200 | $\text{pA}$                    |
|          |                                      | $-40^{\circ}\text{C} < T_A < 85^{\circ}\text{C}$ | ●   |     | 250 | $\text{pA}$                    |
|          |                                      |  | ●   |     | 300 | $\text{pA}$                    |
|          | Input Offset Current (LT1881/LT1882) | $0^{\circ}\text{C} < T_A < 70^{\circ}\text{C}$   |     | 150 | 500 | $\text{pA}$                    |
|          |                                      | $-40^{\circ}\text{C} < T_A < 85^{\circ}\text{C}$ | ●   |     | 600 | $\text{pA}$                    |
|          |                                      |  | ●   |     | 700 | $\text{pA}$                    |

## ELECTRICAL CHARACTERISTICS

The ● denotes the specifications which apply over the full operating temperature range, otherwise specifications are at  $T_A = 25^\circ\text{C}$ .  
 Single supply operation  $V_{EE} = 0$ ,  $V_{CC} = 5\text{V}$ ;  $V_{CM} = V_{CC}/2$  unless otherwise noted. (Note 5)

| SYMBOL    | PARAMETER  | CONDITIONS  | MIN | TYP            | MAX            | UNITS                        |    |
|-----------|--|---|-----|----------------|----------------|------------------------------|----|
| $I_B$     | Input Bias Current (LT1881A)                         | $0^\circ\text{C} < T_A < 70^\circ\text{C}$  | ●   | 100            | 200            | $\mu\text{A}$                |    |
|           |  | $-40^\circ\text{C} < T_A < 85^\circ\text{C}$  | ●   |                | 250            | $\mu\text{A}$                |    |
|           | Input Bias Current (LT1881/LT1882)                   | $0^\circ\text{C} < T_A < 70^\circ\text{C}$  | ●   | 150            | 500            | $\mu\text{A}$                |    |
|           |  | $-40^\circ\text{C} < T_A < 85^\circ\text{C}$  | ●   |                | 600            | $\mu\text{A}$                |    |
|           | Input Noise Voltage                                  | 0.1Hz to 10Hz   |     | 0.5            |                | $\mu\text{V}_{\text{P-P}}$   |    |
| $e_n$     | Input Noise Voltage Density                          | $f = 1\text{kHz}$   |     | 14             |                | $\text{nV}/\sqrt{\text{Hz}}$ |    |
| $i_n$     | Input Noise Current Density                          | $f = 1\text{kHz}$   |     | 0.03           |                | $\text{pA}/\sqrt{\text{Hz}}$ |    |
| $V_{CM}$  | Input Voltage Range                                  |   | ●   | $V_{EE} + 1.0$ | $V_{CC} - 1.0$ | V                            |    |
|           |  |   |     | $V_{EE} + 1.2$ | $V_{CC} - 1.2$ | V                            |    |
| CMRR      | Common Mode Rejection Ratio                          | $1\text{V} < V_{CM} < 4\text{V}$  | ●   | 106            | 128            | dB                           |    |
|           |  | $1.2\text{V} < V_{CM} < 3.8\text{V}$  | ●   | 104            |                | dB                           |    |
| PSRR      | Power Supply Rejection Ratio                         | $V_{EE} = 0$ , $V_{CM} = 1.5\text{V}$ ; $2.7\text{V} < V_{CC} < 32\text{V}$         | ●   | 106            | 132            | dB                           |    |
|           | Minimum Operating Supply Voltage                     |   | ●   | 2.4            | 2.7            | V                            |    |
| $A_{VOL}$ | Large-Signal Voltage Gain                            | $R_L = 10\text{k}$ ; $1\text{V} < V_{OUT} < 4\text{V}$                              | ●   | 500            | 1600           | V/mV                         |    |
|           |  |   |     | 350            |                | V/mV                         |    |
|           |  | $R_L = 2\text{k}$ ; $1\text{V} < V_{OUT} < 4\text{V}$                               | ●   | 300            | 800            | V/mV                         |    |
|           |  |   | ●   | 250            |                | V/mV                         |    |
|           |  | $R_L = 1\text{k}$ ; $1\text{V} < V_{OUT} < 4\text{V}$                               | ●   | 250            | 400            | V/mV                         |    |
|           |  |   | ●   | 200            |                | V/mV                         |    |
| $V_{OL}$  | Output Voltage Swing Low                             | No Load   | ●   | 20             | 40             | mV                           |    |
|           |  | $I_{SINK} = 100\mu\text{A}$   | ●   | 25             | 50             | mV                           |    |
|           |  | $I_{SINK} = 1\text{mA}$   | ●   | 70             | 150            | mV                           |    |
|           |  | $I_{SINK} = 5\text{mA}$   | ●   | 270            | 600            | mV                           |    |
| $V_{OH}$  | Output Voltage Swing High<br>(Referred to $V_{CC}$ ) | No Load   | ●   | 120            | 220            | mV                           |    |
|           |  | $I_{SOURCE} = 100\mu\text{A}$   | ●   | 130            | 230            | mV                           |    |
|           |  | $I_{SOURCE} = 1\text{mA}$   | ●   | 180            | 300            | mV                           |    |
|           |  | $I_{SOURCE} = 5\text{mA}$   | ●   | 360            | 600            | mV                           |    |
| $I_S$     | Supply Current Per Amplifier                         | $V_{CC} = 3\text{V}$  | ●   | 0.45           | 0.65           | 0.85                         | mA |
|           |  |   |     |                |                | 1.2                          | mA |
|           |  | $V_{CC} = 5\text{V}$  | ●   | 0.5            | 0.65           | 0.9                          | mA |
|           |  |   | ●   |                |                | 1.4                          | mA |
|           |  | $V_{CC} = 12\text{V}$   | ●   | 0.5            | 0.70           | 1.0                          | mA |
|           |  |   | ●   |                |                | 1.5                          | mA |
| $I_{SC}$  | Short-Circuit Current                                | $V_{OUT}$ Short to GND  | ●   | 15             | 30             | mA                           |    |
|           |  | $V_{OUT}$ Short to $V_{CC}$   | ●   | 15             | 30             | mA                           |    |
| GBW       | Gain-Bandwidth Product                               | $f = 20\text{kHz}$  |     | 0.5            | 1.0            | MHz                          |    |
| $t_S$     | Settling Time  | 0.01%, $V_{OUT} = 1.5\text{V}$ to $3.5\text{V}$ ,<br>$A_V = -1$ , $R_L = 2\text{k}$ |     | 30             |                | $\mu\text{s}$                |    |
| $SR^+$    | Slew Rate Positive                                   | $A_V = -1$  | ●   | 0.15           | 0.35           | V/ $\mu\text{s}$             |    |
|           |  |   | ●   | 0.12           |                | V/ $\mu\text{s}$             |    |
| $SR^-$    | Slew Rate Negative                                   | $A_V = -1$  | ●   | 0.11           | 0.18           | V/ $\mu\text{s}$             |    |
|           |  |   | ●   | 0.08           |                | V/ $\mu\text{s}$             |    |

## ELECTRICAL CHARACTERISTICS

The ● denotes the specifications which apply over the full operating temperature range, otherwise specifications are at  $T_A = 25^\circ\text{C}$ .  
Single supply operation  $V_{EE} = 0$ ,  $V_{CC} = 5\text{V}$ ;  $V_{CM} = V_{CC}/2$  unless otherwise noted. (Note 5)

| SYMBOL              | PARAMETER                                       | CONDITIONS   | MIN | TYP | MAX                | UNITS   |
|---------------------|---|--|-----|-----|--------------------|---|
| $\Delta V_{OS}$     | Offset Voltage Match (LT1881A)                  | (Note 7)<br>$0^\circ\text{C} < T_A < 70^\circ\text{C}$<br>$-40^\circ\text{C} < T_A < 85^\circ\text{C}$     | ●   | 30  | 70<br>125<br>160   | $\mu\text{V}$<br>$\mu\text{V}$<br>$\mu\text{V}$ |
|                     | Offset Voltage Match (LT1881/LT1882)            | (Note 7)<br>$0^\circ\text{C} < T_A < 70^\circ\text{C}$<br>$-40^\circ\text{C} < T_A < 85^\circ\text{C}$     | ●   | 35  | 125<br>175<br>235  | $\mu\text{V}$<br>$\mu\text{V}$<br>$\mu\text{V}$ |
|                     | Offset Voltage Match Drift                      | (Notes 6, 7)   | ●   | 0.4 | 1.2                | $\mu\text{V}/^\circ\text{C}$                    |
| $\Delta I_{B+}$     | Noninverting Bias Current Match (LT1881A)       | (Notes 7, 8)<br>$0^\circ\text{C} < T_A < 70^\circ\text{C}$<br>$-40^\circ\text{C} < T_A < 85^\circ\text{C}$ | ●   | 200 | 300<br>400<br>500  | $\text{pA}$<br>$\text{pA}$<br>$\text{pA}$       |
|                     | Noninverting Bias Current Match (LT1881/LT1882) | (Notes 7, 8)<br>$0^\circ\text{C} < T_A < 70^\circ\text{C}$<br>$-40^\circ\text{C} < T_A < 85^\circ\text{C}$ | ●   | 250 | 700<br>900<br>1000 | $\text{pA}$<br>$\text{pA}$<br>$\text{pA}$       |
| $\Delta\text{CMRR}$ | Common Mode Rejection Match                     | (Notes 7, 9)   | ●   | 102 | 125                | $\text{dB}$                                     |
| $\Delta\text{PSRR}$ | Power Supply Rejection Match                    | $V_{EE} = 0\text{V}$ , $V_{CM} = 1.5\text{V}$ , $2.7\text{V} < V_{CC} < 32\text{V}$ ,<br>(Notes 7, 9)      | ●   | 104 | 126                | $\text{dB}$                                     |

The ● denotes the specifications which apply over the full operating temperature range, otherwise specifications are at  $T_A = 25^\circ\text{C}$ .  
Split supply operation  $V_S = \pm 15\text{V}$ ,  $V_{CM} = 0\text{V}$  unless otherwise noted. (Note 5)

| SYMBOL   | PARAMETER                            | CONDITIONS   | MIN | TYP                              | MAX                              | UNITS  |
|----------|--------------------------------------|--|-----|----------------------------------|----------------------------------|--|
| $V_{OS}$ | Input Offset Voltage (LT1881A)       | $0^\circ\text{C} < T_A < 70^\circ\text{C}$<br>$-40^\circ\text{C} < T_A < 85^\circ\text{C}$ | ●   | 25                               | 50<br>85<br>110                  | $\mu\text{V}$<br>$\mu\text{V}$<br>$\mu\text{V}$              |
|          | Input Offset Voltage (LT1881/LT1882) | $0^\circ\text{C} < T_A < 70^\circ\text{C}$<br>$-40^\circ\text{C} < T_A < 85^\circ\text{C}$ | ●   | 30                               | 80<br>125<br>150                 | $\mu\text{V}$<br>$\mu\text{V}$<br>$\mu\text{V}$              |
|          | Input Offset Voltage Drift (Note 6)  | $0^\circ\text{C} < T_A < 70^\circ\text{C}$<br>$-40^\circ\text{C} < T_A < 85^\circ\text{C}$ | ●   | 0.3                              | 0.8                              | $\mu\text{V}/^\circ\text{C}$<br>$\mu\text{V}/^\circ\text{C}$ |
| $I_{OS}$ | Input Offset Current (LT1881A)       | $0^\circ\text{C} < T_A < 70^\circ\text{C}$<br>$-40^\circ\text{C} < T_A < 85^\circ\text{C}$ | ●   | 150                              | 200<br>250<br>300                | $\text{pA}$<br>$\text{pA}$<br>$\text{pA}$                    |
|          | Input Offset Current (LT1881/LT1882) | $0^\circ\text{C} < T_A < 70^\circ\text{C}$<br>$-40^\circ\text{C} < T_A < 85^\circ\text{C}$ | ●   | 150                              | 500<br>600<br>700                | $\text{pA}$<br>$\text{pA}$<br>$\text{pA}$                    |
| $I_B$    | Input Bias Current (LT1881A)         | $0^\circ\text{C} < T_A < 70^\circ\text{C}$<br>$-40^\circ\text{C} < T_A < 85^\circ\text{C}$ | ●   | 150                              | 200<br>250<br>300                | $\text{pA}$<br>$\text{pA}$<br>$\text{pA}$                    |
|          | Input Bias Current (LT1881/LT1882)   | $0^\circ\text{C} < T_A < 70^\circ\text{C}$<br>$-40^\circ\text{C} < T_A < 85^\circ\text{C}$ | ●   | 150                              | 500<br>600<br>700                | $\text{pA}$<br>$\text{pA}$<br>$\text{pA}$                    |
|          | Input Noise Voltage                  | 0.1Hz to 10Hz  |     | 0.5                              |                                  | $\mu\text{V}_{\text{p-p}}$                                   |
| $e_n$    | Input Noise Voltage Density          | $f = 1\text{kHz}$  |     | 14                               |                                  | $\text{nV}/\sqrt{\text{Hz}}$                                 |
| $i_n$    | Input Noise Current Density          | $f = 1\text{kHz}$  |     | 0.03                             |                                  | $\text{pA}/\sqrt{\text{Hz}}$                                 |
| $V_{CM}$ | Input Voltage Range                  |  | ●   | $V_{EE} + 1.0$<br>$V_{EE} + 1.2$ | $V_{CC} - 1.0$<br>$V_{CC} - 1.2$ | $\text{V}$<br>$\text{V}$                                     |

## ELECTRICAL CHARACTERISTICS

The ● denotes the specifications which apply over the full operating temperature range, otherwise specifications are at  $T_A = 25^\circ\text{C}$ . Split supply operation  $V_S = \pm 15\text{V}$ ,  $V_{\text{CM}} = 0\text{V}$  unless otherwise noted. (Note 5)

| SYMBOL                  | PARAMETER   | CONDITIONS   | MIN | TYP  | MAX   | UNITS            |                              |
|-------------------------|---|--|-----|------|-------|------------------|------------------------------|
| CMRR                    | Common Mode Rejection Ratio                                 | $-13.5\text{V} < V_{\text{CM}} < 13.5\text{V}$                                       | ●   | 114  | 130   | dB               |                              |
| +PSRR                   | Positive Power Supply Rejection Ratio                       | $V_{\text{EE}} = -15, V_{\text{CM}} = 0; 1.5\text{V} < V_{\text{CC}} < 18\text{V}$   | ●   | 110  | 132   | dB               |                              |
| -PSRR                   | Negative Power Supply Rejection Ratio                       | $V_{\text{CC}} = 15, V_{\text{CM}} = 0; -1.5\text{V} < V_{\text{EE}} < -18\text{V}$  | ●   | 106  | 132   | dB               |                              |
|                         | Minimum Operating Supply Voltage                            |  | ●   | ±1.2 | ±1.35 | V                |                              |
| $A_{\text{VOL}}$        | Large-Signal Voltage Gain                                   | $R_L = 10\text{k}; -13.5\text{V} < V_{\text{OUT}} < 13.5\text{V}$                    | ●   | 1000 | 1600  | V/mV             |                              |
|                         |   |  | ●   | 700  |       | V/mV             |                              |
|                         |   | $R_L = 2\text{k}; -13.5\text{V} < V_{\text{OUT}} < 13.5\text{V}$                     | ●   | 175  | 420   | V/mV             |                              |
|                         |   | $R_L = 1\text{k}; -12\text{V} < V_{\text{OUT}} < 12\text{V}$                         | ●   | 90   | 230   | V/mV             |                              |
|                         |   |  | ●   | 65   |       | V/mV             |                              |
| $V_{\text{OL}}$         | Output Voltage Swing Low<br>(Referred to $V_{\text{EE}}$ )  | No Load  | ●   |      | 20    | 40               | mV                           |
|                         |   | $I_{\text{SINK}} = 100\mu\text{A}$   | ●   |      | 25    | 50               | mV                           |
|                         |   | $I_{\text{SINK}} = 1\text{mA}$   | ●   |      | 70    | 150              | mV                           |
|                         |   | $I_{\text{SINK}} = 5\text{mA}$   | ●   |      | 270   | 600              | mV                           |
| $V_{\text{OH}}$         | Output Voltage Swing High<br>(Referred to $V_{\text{CC}}$ ) | No Load  | ●   |      | 160   | 220              | mV                           |
|                         |   | $I_{\text{SOURCE}} = 100\mu\text{A}$   | ●   |      | 160   | 230              | mV                           |
|                         |   | $I_{\text{SOURCE}} = 1\text{mA}$   | ●   |      | 180   | 300              | mV                           |
|                         |   | $I_{\text{SOURCE}} = 5\text{mA}$   | ●   |      | 360   | 600              | mV                           |
| $I_S$                   | Supply Current Per Amplifier                                | $V_S = \pm 15\text{V}$   | ●   | 0.5  | 0.85  | 1.1              | mA                           |
|                         |   |  | ●   |      |       | 1.6              | mA                           |
| $I_{\text{SC}}$         | Short-Circuit Current                                       | $V_{\text{OUT}}$ Short to $V_{\text{EE}}$  | ●   | 20   | 40    | mA               |                              |
|                         |   |  | ●   | 15   | 40    | mA               |                              |
|                         |   | $V_{\text{OUT}}$ Short to $V_{\text{CC}}$  | ●   | 20   | 30    | mA               |                              |
|                         |   |  | ●   | 15   | 30    | mA               |                              |
| GBW                     | Gain-Bandwidth Product                                      | $f = 20\text{kHz}$   |     | 0.6  | 1.1   | MHz              |                              |
| $t_S$                   | Settling Time   | 0.01%, $V_{\text{OUT}} = -5\text{V}$ to $5\text{V}$ ,<br>$A_V = -1, R_L = 2\text{k}$ |     |      | 35    | $\mu\text{s}$    |                              |
| $\text{SR}^+$           | Slew Rate Positive  | $A_V = -1$   | ●   | 0.21 | 0.4   | V/ $\mu\text{s}$ |                              |
|                         |   |  | ●   | 0.18 |       | V/ $\mu\text{s}$ |                              |
| $\text{SR}^-$           | Slew Rate Negative  | $A_V = -1$   | ●   | 0.13 | 0.20  | V/ $\mu\text{s}$ |                              |
|                         |   |  | ●   | 0.1  |       | V/ $\mu\text{s}$ |                              |
| $\Delta V_{\text{OS}}$  | Offset Voltage Match (LT1881/LT1882)                        | (Note 5)   | ●   |      | 42    | 125              | $\mu\text{V}$                |
|                         |   | $0^\circ\text{C} < T_A < 70^\circ\text{C}$   | ●   |      |       | 175              | $\mu\text{V}$                |
|                         |   | $-40^\circ\text{C} < T_A < 85^\circ\text{C}$   | ●   |      |       | 235              | $\mu\text{V}$                |
|                         | Offset Voltage Match (LT1881A)                              | $0^\circ\text{C} < T_A < 70^\circ\text{C}$   | ●   |      | 35    | 70               | $\mu\text{V}$                |
|                         |   |  | ●   |      |       | 125              | $\mu\text{V}$                |
|                         |   | $-40^\circ\text{C} < T_A < 85^\circ\text{C}$   | ●   |      |       | 160              | $\mu\text{V}$                |
|                         | Offset Voltage Match Drift                                  | (Notes 6, 7)   | ●   |      | 0.4   | 1.1              | $\mu\text{V}/^\circ\text{C}$ |
| $\Delta I_{\text{B}^+}$ | Noninverting Bias Current Match<br>(LT1881/LT1882)          | (Notes 7, 8)   | ●   |      | 240   | 700              | pA                           |
|                         |   | $0^\circ\text{C} < T_A < 70^\circ\text{C}$   | ●   |      |       | 900              | pA                           |
|                         |   | $-40^\circ\text{C} < T_A < 85^\circ\text{C}$   | ●   |      |       | 1000             | pA                           |
|                         | Noninverting Bias Current Match<br>(LT1881A)                | $0^\circ\text{C} < T_A < 70^\circ\text{C}$   | ●   |      | 200   | 300              | pA                           |
|                         |   |  | ●   |      |       | 400              | pA                           |
|                         |   | $-40^\circ\text{C} < T_A < 85^\circ\text{C}$   | ●   |      |       | 500              | pA                           |
| $\Delta\text{CMRR}$     | Common Mode Rejection Match                                 | (Notes 7, 9)   | ●   | 110  | 125   | dB               |                              |

## ELECTRICAL CHARACTERISTICS

The ● denotes the specifications which apply over the full operating temperature range, otherwise specifications are at  $T_A = 25^\circ\text{C}$ . Split supply operation  $V_S = \pm 15\text{V}$ ,  $V_{CM} = 0\text{V}$  unless otherwise noted. (Note 5)

| SYMBOL                | PARAMETER                             | CONDITIONS   | MIN   | TYP | MAX | UNITS |
|-----------------------|---------------------------------------|--|-------|-----|-----|-------|
| $\Delta +\text{PSRR}$ | Positive Power Supply Rejection Match | $V_{EE} = -15\text{V}$ , $V_{CM} = 0\text{V}$ ,<br>$1.5\text{V} < V_{CC} < 18\text{V}$ , (Notes 7, 9)  | ● 108 | 130 |     | dB    |
| $\Delta -\text{PSRR}$ | Negative Power Supply Rejection Match | $V_{CC} = 15\text{V}$ , $V_{CM} = 0\text{V}$ ,<br>$-1.5\text{V} < V_{EE} < -18\text{V}$ , (Notes 7, 9) | ● 104 | 130 |     | dB    |

**Note 1:** Absolute Maximum Ratings are those values beyond which the life of a device may be impaired.

**Note 2:** The inputs are protected by internal resistors and back-to-back diodes. If the differential input voltage exceeds  $\pm 0.7\text{V}$ , the input current should be limited externally to less than 10mA.

**Note 3:** A heat sink may be required to keep the junction temperature below absolute maximum.

**Note 4:** The LT1881C, LT1882C, LT1881I and LT1882I are guaranteed functional over the operating temperature range of  $-40^\circ\text{C}$  to  $85^\circ\text{C}$ .

**Note 5:** The LT1881C and LT1882C are designed, characterized and expected to meet specified performance from  $-40^\circ\text{C}$  to  $85^\circ\text{C}$  but are not tested or QA sampled at these temperatures. The LT1881I and LT1882I are guaranteed to meet specified performance from  $-40^\circ\text{C}$  to  $85^\circ\text{C}$ .

**Note 6:** This parameter is not 100% tested.

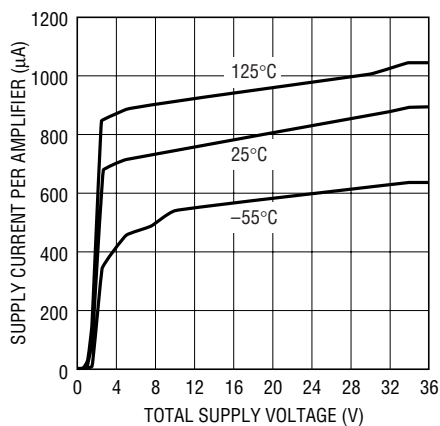
**Note 7:** Matching parameters are the difference between amplifiers A and B in the LT1881; and between amplifiers A and D and B and C in the LT1882.

**Note 8:** This parameter is the difference between the two noninverting input bias currents.

**Note 9:**  $\Delta\text{CMRR}$  and  $\Delta\text{PSRR}$  are defined as follows: CMRR and PSRR are measured in  $\mu\text{V/V}$  on each amplifier. The difference is calculated in  $\mu\text{V/V}$  and then converted to dB.

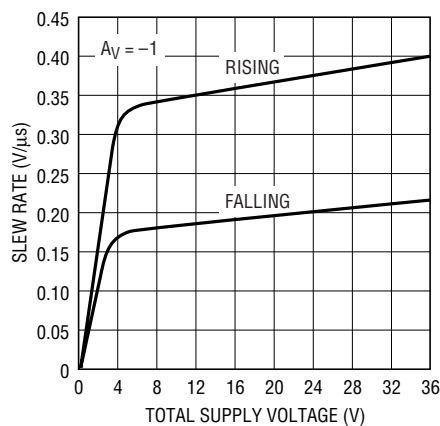
## TYPICAL PERFORMANCE CHARACTERISTICS

Supply Current per Amplifier vs Supply Voltage



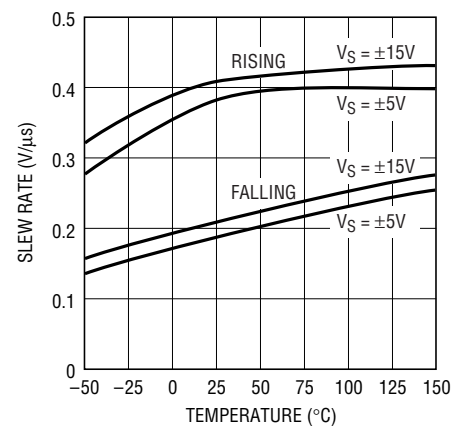
1881/2 G01

Slew Rate vs Supply Voltage



1881/2 G02

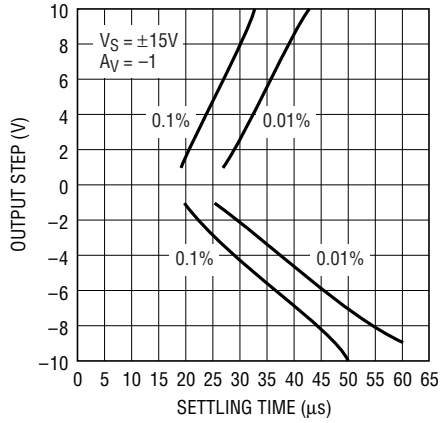
Slew Rate vs Temperature



1881/2 G03

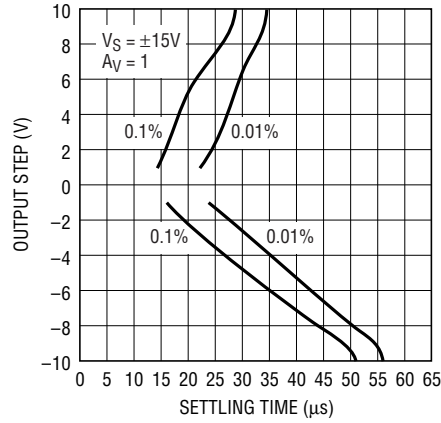
# TYPICAL PERFORMANCE CHARACTERISTICS

Settling Time vs Output Step



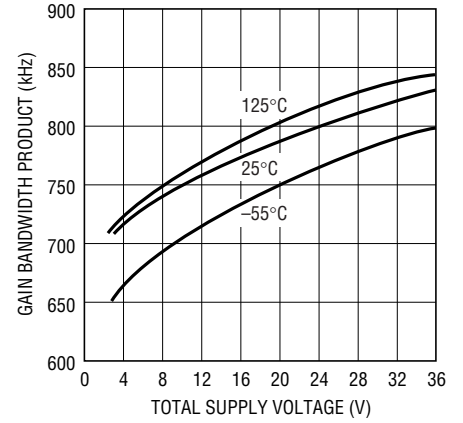
1881/2 G04

Settling Time vs Output Step



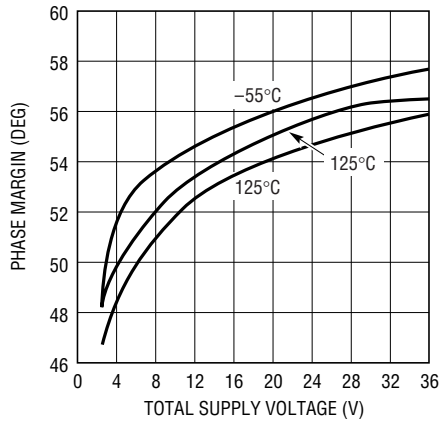
1881/2 G05

Gain Bandwidth Product vs Supply Voltage



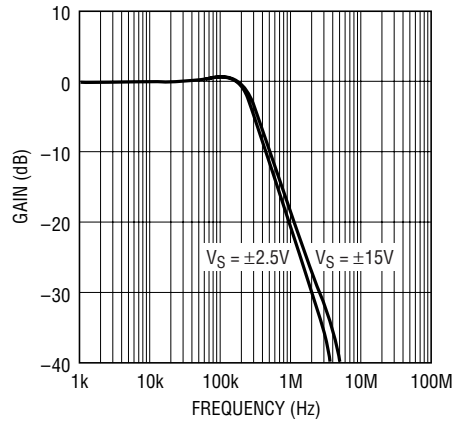
1881/2 G06

Phase Margin vs Supply Voltage



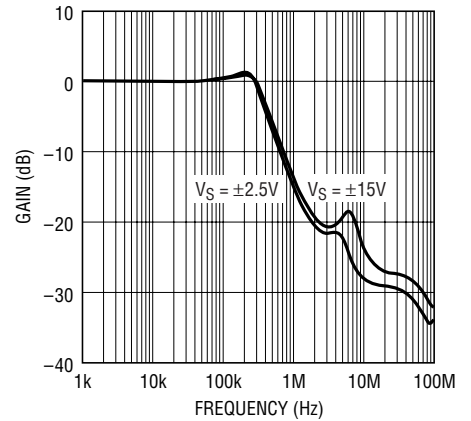
1881/2 G07

Gain vs Frequency, Av = -1



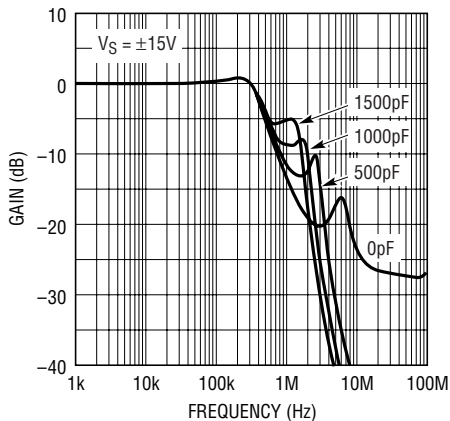
1881/2 G08

Gain vs Frequency, Av = 1



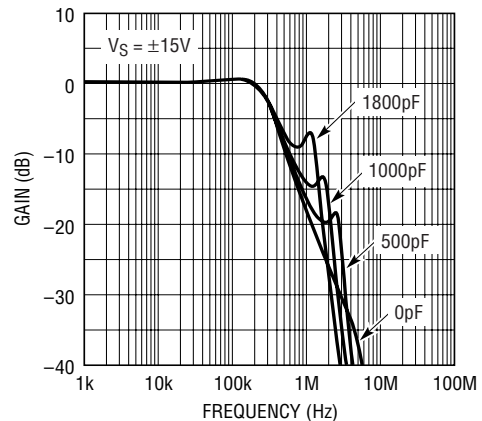
1881/2 G09

Gain vs Frequency with C<sub>LOAD</sub>, Av = 1



1881/2 G10

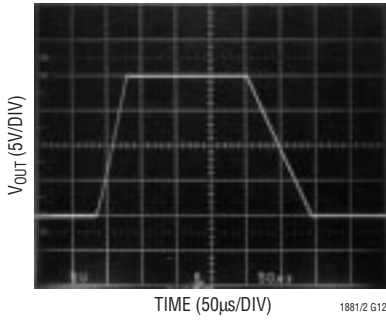
Gain vs Frequency with C<sub>LOAD</sub>, Av = -1



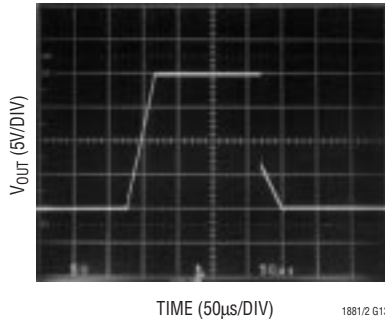
1881/2 G11

# TYPICAL PERFORMANCE CHARACTERISTICS

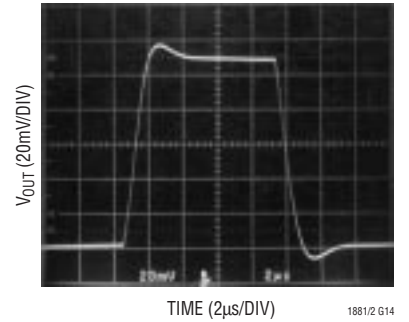
Large Signal Response,  $A_V = -1$



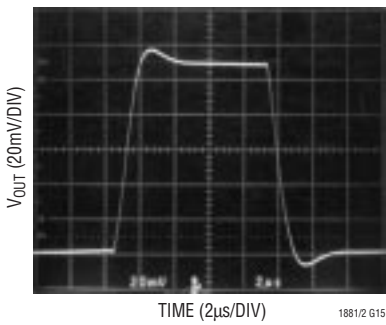
Large Signal Response,  $A_V = 1$



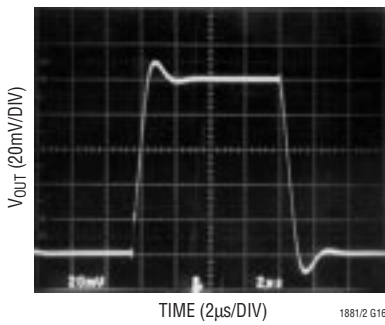
Small Signal Response,  $A_V = -1$ ,  
No Load



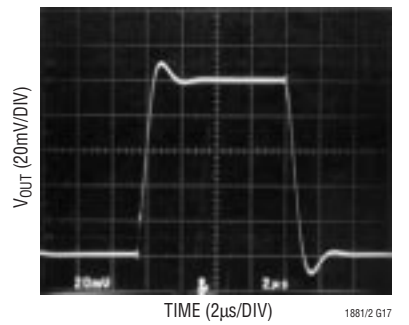
Small Signal Response,  $A_V = -1$ ,  
 $C_L = 1000pF$



Small Signal Response,  $A_V = 1$ ,  
 $R_L = 2k$



Small Signal Response,  $A_V = 1$ ,  
 $C_L = 500pF$





## APPLICATIONS INFORMATION

The LT1881 dual and LT1882 quad op amps feature exceptional input precision with rail-to-rail output swing. The amplifiers are similar to the LT1884 and LT1885 devices. The LT1881 and LT1882 offer superior capacitive load driving capabilities over the LT1884 and LT1885 in low voltage gain configurations. Offset voltages are trimmed to less than  $50\mu\text{V}$  and input bias currents are less than  $200\text{pA}$  on the “A” grade devices. Obtaining beneficial advantage of these precision input characteristics depends upon proper applications circuit design and board layout.

### Preserving Input Precision

Preserving the input voltage accuracy of the LT1881/LT1882 requires that the applications circuit and PC board layout do not introduce errors comparable to or greater than the  $30\mu\text{V}$  offset. Temperature differentials across the input connections can generate thermocouple voltages of 10’s of microvolts. PC board layouts should keep connections to the amplifier’s input pins close together and away from heat dissipating components. Air currents across the board can also generate temperature differentials.

The extremely low input bias currents,  $150\text{pA}$ , allow high accuracy to be maintained with high impedance sources and feedback networks. The LT1881/LT1882’s low input bias currents are obtained by using a cancellation circuit on-chip. This causes the resulting  $I_{\text{BIAS}+}$  and  $I_{\text{BIAS}-}$  to be uncorrelated, as implied by the  $I_{\text{OS}}$  specification being greater than the  $I_{\text{BIAS}}$ . The user should not try to balance the input resistances in each input lead, as is commonly recommended with most amplifiers. The impedance at either input should be kept as small as possible to minimize total circuit error.

PC board layout is important to insure that leakage currents do not corrupt the low  $I_{\text{BIAS}}$  of the amplifier. In high precision, high impedance circuits, the input pins should be surrounded by a guard ring of PC board interconnect, with the guard driven to the same common mode voltage as the amplifier inputs.

### Input Common Mode Range

The LT1881 and LT1882 outputs are able to swing nearly to each power supply rail, but the input stage is limited to operating between  $V_{\text{EE}} + 0.8\text{V}$  and  $V_{\text{CC}} - 0.9\text{V}$ . Exceeding this common mode range will cause the gain to drop to zero; however, no gain reversal will occur.

### Input Protection

The inverting and noninverting input pins of the LT1881 and LT1882 have limited on-chip protection. ESD protection is provided to prevent damage during handling. The input transistors have voltage clamping and limiting resistors to protect against input differentials up to  $10\text{V}$ . Short transients above this level will also be tolerated. If the input pins can see a sustained differential voltage above  $10\text{V}$ , external limiting resistors should be used to prevent damage to the amplifier. A  $1\text{k}$  resistor in each input lead will provide protection against a  $30\text{V}$  differential voltage.

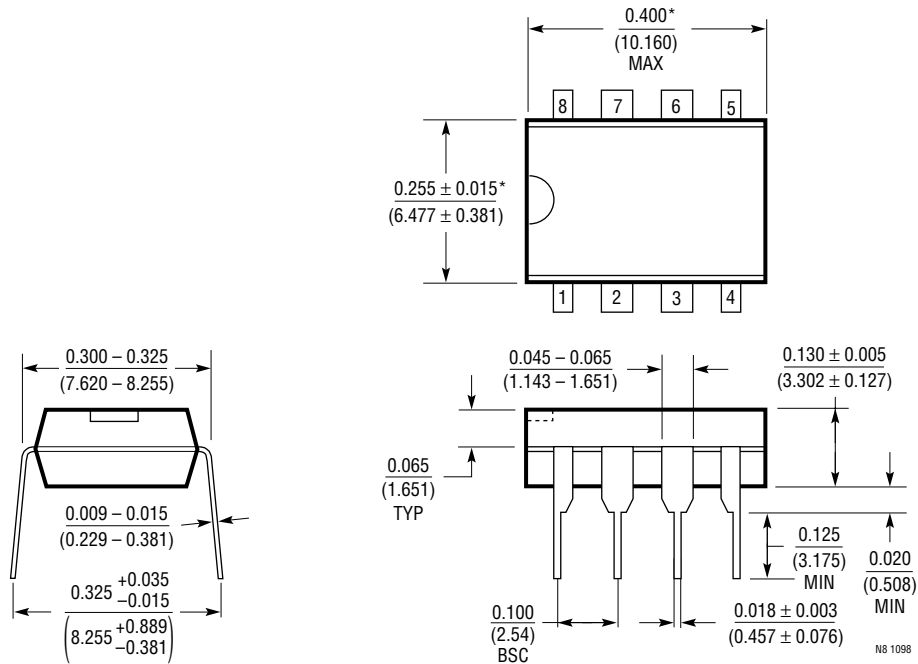
### Capacitive Loads

The LT1881 and LT1882 can drive capacitive loads up to  $1000\text{pF}$  in unity-gain. The capacitive load driving increases as the amplifier is used in higher gain configurations. Capacitive load driving may be increased by decoupling the capacitance from the output with a small resistance.

**PACKAGE DESCRIPTION**

Dimensions in inches (millimeters) unless otherwise noted.

**N8 Package**  
**8-Lead PDIP (Narrow 0.300)**  
 (LTC DWG # 05-08-1510)



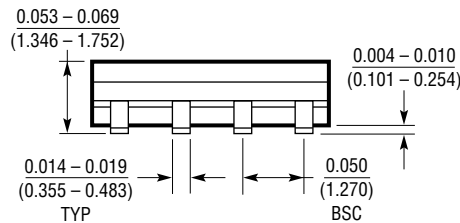
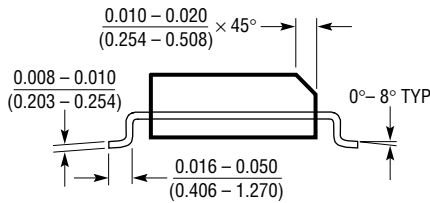
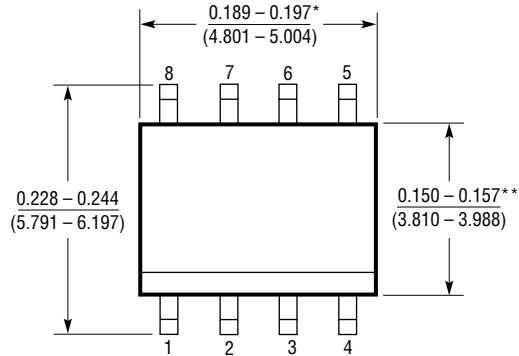
\*THESE DIMENSIONS DO NOT INCLUDE MOLD FLASH OR PROTRUSIONS.  
 MOLD FLASH OR PROTRUSIONS SHALL NOT EXCEED 0.010 INCH (0.254mm)

N8 1098

**PACKAGE DESCRIPTION**

Dimensions in inches (millimeters) unless otherwise noted.

**S8 Package**  
**8-Lead Plastic Small Outline (Narrow 0.150)**  
 (LTC DWG # 05-08-1610)

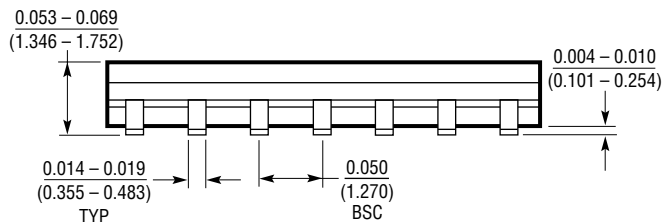
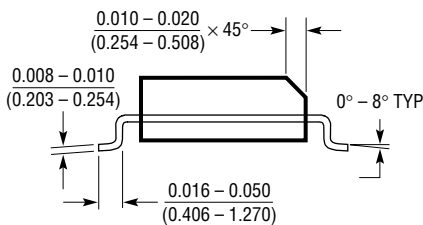
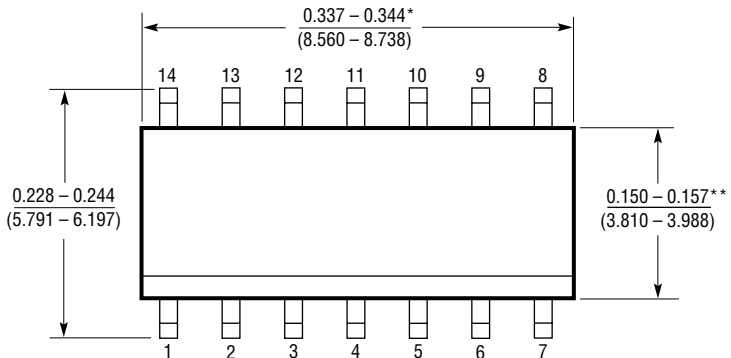


\*DIMENSION DOES NOT INCLUDE MOLD FLASH. MOLD FLASH SHALL NOT EXCEED 0.006" (0.152mm) PER SIDE

\*\*DIMENSION DOES NOT INCLUDE INTERLEAD FLASH. INTERLEAD FLASH SHALL NOT EXCEED 0.010" (0.254mm) PER SIDE

S08 1298

**S Package**  
**14-Lead Plastic Small Outline (Narrow 0.150)**  
 (LTC DWG # 05-08-1610)



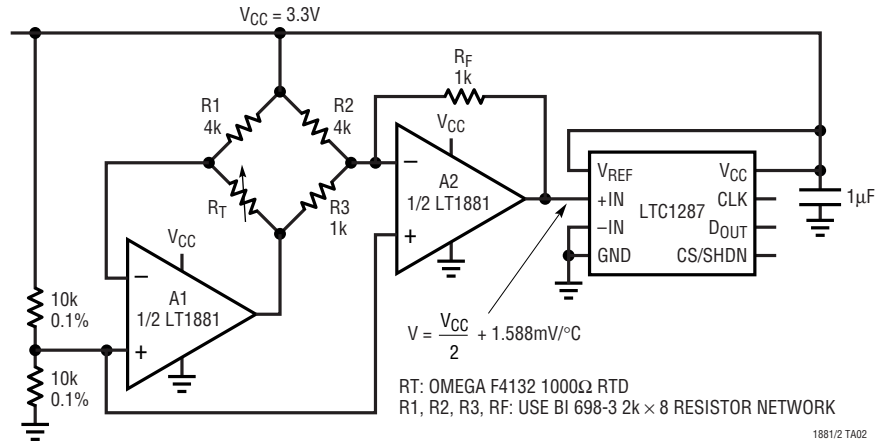
\*DIMENSION DOES NOT INCLUDE MOLD FLASH. MOLD FLASH SHALL NOT EXCEED 0.006" (0.152mm) PER SIDE

\*\*DIMENSION DOES NOT INCLUDE INTERLEAD FLASH. INTERLEAD FLASH SHALL NOT EXCEED 0.010" (0.254mm) PER SIDE

S14 1298

## TYPICAL APPLICATION

-50°C to 600°C Digital Thermometer Operates on 3.3V



## RELATED PARTS

| PART NUMBER   | DESCRIPTION                           | COMMENTS   |
|---------------|---------------------------------------|--|
| LT1112/LT1114 | Dual/Quad Picoamp Input Op Amp        | $V_{OS} = 60\mu\text{V}$ Max                     |
| LT1677        | Gain Programmable Instrumentation Amp | Gain Error = 0.08% Max                           |
| LT1793        | Low Noise JFET Op Amp                 | $I_B = 10\text{pA}$ Max                          |
| LT1884/LT1885 | Dual/Quad Picoamp Input Op Amp        | 3 Times Faster than LT1881/LT1882                |
| LTC2050       | Zero Drift Op Amp in SOT-23           | $V_{OS} = 3\mu\text{V}$ Max, Rail-to-Rail Output |