



# Allen Electric Connector Sales, inc.

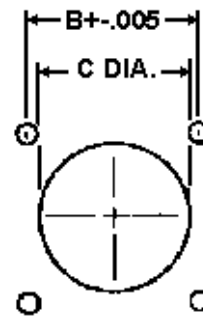
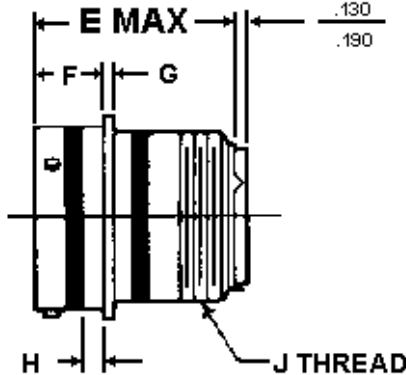
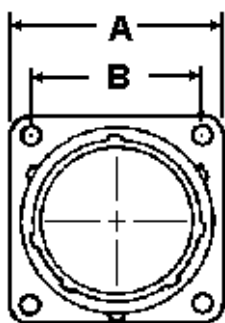


## MS3470 RECEPTACLE, NARROW FLANGE MOUNTING, BAYONET COUPLING, CLASS A, L, S, W

SHELL SIZE	A MAX	B ±.005	C ±.005	D ±.005	E MAX	F ±.010	G ±.010	H MAX	J THREAD
8	.828	.594	.568	.120	1.215	.446	.062	.087	1/2-20 UNF
10	.964	.719	.685	.120	1.215	.446	.062	.087	5/8-24 UNF
12	1.047	.812	.864	.120	1.215	.446	.062	.087	3/4-20 UNF
14	1.141	.906	.989	.120	1.215	.446	.062	.087	7/8-20 UNF
16	1.234	.969	1.113	.120	1.215	.446	.062	.087	1-20 UNF



SHELL SIZE	A MAX	B ±.005	C ±.005	D ±.005	E MAX	F ±.010	G ±.010	H MAX	J THREAD
8	.828	.594	.568	.120	1.215	.446	.062	.087	1/2-20 UNF
10	.964	.719	.685	.120	1.215	.446	.062	.087	5/8-24 UNF
12	1.047	.812	.864	.120	1.215	.446	.062	.087	3/4-20 UNF
14	1.141	.906	.989	.120	1.215	.446	.062	.087	7/8-20 UNF
16	1.234	.969	1.113	.120	1.215	.446	.062	.087	1-20 UNF



MAX PANEL

PANEL CUTOUT

D DIA. 4 HOLES

SHELL SIZE	A MAX	B ±.005	C ±.005	D ±.005	E MAX	F ±.010	G ±.010	H MAX	J THREAD
8	.828	.594	.568	.120	1.215	.446	.062	.087	1/2 20 UNF
10	.964	.719	.685	.120	1.215	.446	.062	.087	5/8-24 UNF
12	1.047	.812	.864	.120	1.215	.446	.062	.087	3/4-20 UNF
14	1.141	.906	.989	.120	1.215	.446	.062	.087	7/8-20 UNF
16	1.234	.969	1.113	.120	1.215	.446	.062	.087	1-20 UNF

18	1.328	1.062	1.238	.120	1.215	.446	.062	.087	1 1/16-18 UNEF
20	1.453	1.156	1.363	.120	1.275	.572	.094	.212	1 3/16-18 UNEF
22	1.578	1.250	1.488	.120	1.275	.572	.094	.212	1 5/16-18 UNEF
24	1.703	1.375	1.615	.147	1.275	.604	.094	.212	1 7/16-18 UNEF

[MIL-C-26482 Series II Polarizing Positions](#)  
[MIL-C-26482 Series II Insert Arrangements](#)

### MILITARY PART NUMBERING SYSTEM

**MS3470**

**L 14 - 04 P W**

- Polarization** (Blank for normal, Alternate positions W, X, Y or Z)
- Contact Style:** P= Pins, S= Sockets, A= less Pins, B= less Sockets
- Insert Arrangement:** Per MIL-STD-1669
- Shell Size:** Even numbers 8 thru 24
- Class:**
  - L = Aluminum shell, electroless nickel finish
  - A = Aluminum shell, anodized finish, black (not applicable to MS3475)
  - S = Stainless steel, passivated
  - W = Aluminum shell, olive drab cadmium plated
- MS Number:** MS3470 Narrow flange receptacle  
 MS3471 Cable connecting receptacle  
 MS3472 Wide flange receptacle  
 MS3474 Jam nut mount receptacle  
 MS3475 RFI grounding Plug  
 MS3476 Standard Plug

For pricing and availability, please fill out our RFQ form



If you need any other information, please **E-Mail** [aecs@aecsinc.com](mailto:aecs@aecsinc.com)

phone (760) 430-8357 or fax (760) 430-8359

We look forward to hearing from you!



A Woman Owned Small Business, CAGE Code 07BG6

Copyright © 2000, 2001, 2002 All Rights Reserved Allen Electric Connector Sales, Inc.