

**Olympian  
Filter  
3/4", 1", 1 1/4", 1 1/2" Port Sizes**

- Olympian plug in design
- High efficiency water and particle removal


**Technical Data**

Fluid: Compressed air

Maximum pressure:

Metal bowl: 17 bar (250 psig)

Operating temperature\*:

Metal bowl: -20° to +80°C (0° to +175°F)

\* Air supply must be dry enough to avoid ice formation at temperatures below +2°C (+35°F).

Partical removal: 5, 25 or 50 µm. Within ISO 8573-1, Class 3 and Class 5

Typical flow at 6,3 bar (90 psig) inlet pressure and a droop of 0,5 bar (7 psig):

50 µm element: 185 dm<sup>3</sup>/s (393 scfm)

Automatic drain connection: 1/8"

Automatic drain operating conditions:

Minimum pressure: 0,7 bar (10 psig).

Drain opens when bowl pressure drops below 0,2 bar (3 psig).

Minimum air flow: 1 dm<sup>3</sup>/s (2 scfm) required to close drain.

Nominal bowl size:

0,5 litre (1 pint US)

Materials:

Body: Aluminium

Yoke: Aluminium

Metal bowl: Aluminium

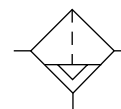
Sight glass: Pyrex

Element: Sintered bronze

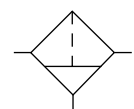
Elastomers: Synthetic rubber

**Ordering Information**

See *Ordering Information* on the following pages.

**ISO Symbols**


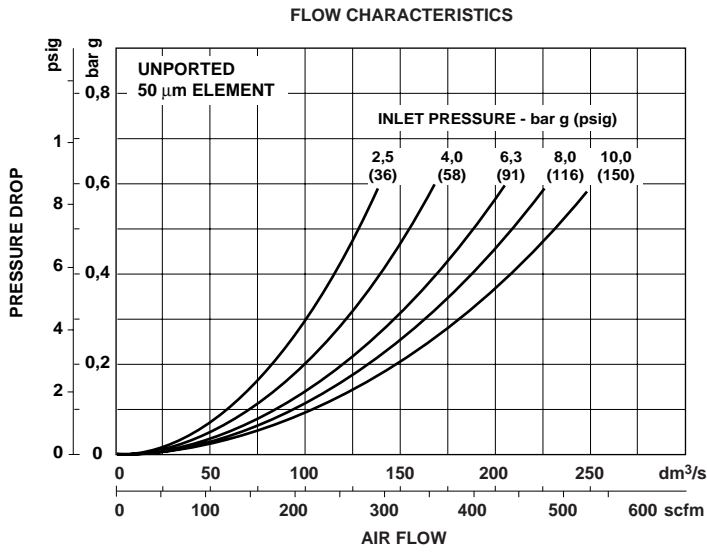
Automatic Drain



Manual Drain



## Typical Performance Characteristics



**Ordering Information.** Models listed include ISO G threads, automatic drain, 50 µm element.

Port Size	Model	Weight kg (lb)
G3/4	F15-600-A3HD	2,72 (6.04)
G1	F15-800-A3HD	2,60 (5.78)
G1 1/4	F15-A00-A3HD	2,70 (6.00)
G1 1/2	F15-B00-A3HD	2,54 (5.64)

For replacement Filter (without yoke) substitute '0' at 4th and '0' at 10th digits eg: F15-000-A3HO.

## Alternative Models



Port Size	Substitute
3/4"	6
1"	8
1 1/4"	A
1 1/2"	B

Option	Substitute
Standard	0 0

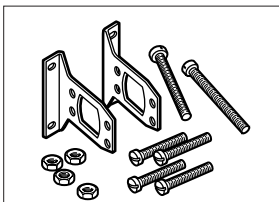
Drain	Substitute
Automatic	A
Manual	M

Thread	Substitute
PTF	A
ISO Rc taper	B
ISO G parallel	D

Option	Substitute
Standard bowl, with sight glass	H
Standard bowl, without sight glass	G

Element	Substitute
5 µm	1
25 µm	2
50 µm	3

## Accessories

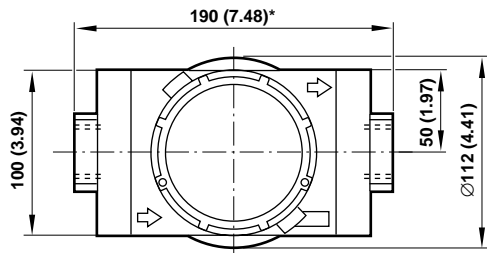


Wall Mounting Bracket

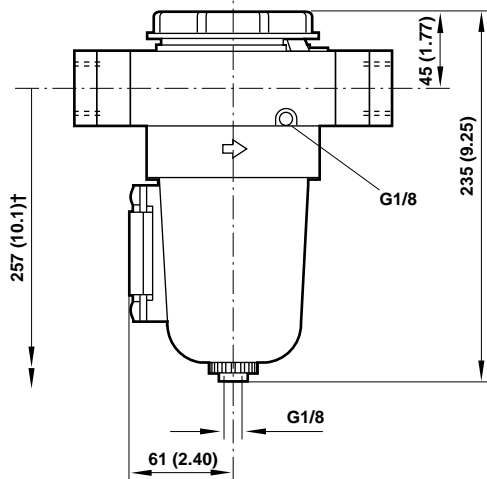
G3/4	18-001-979
G1	18-001-979
G1 1/4	18-001-978
G1 1/2	N/A



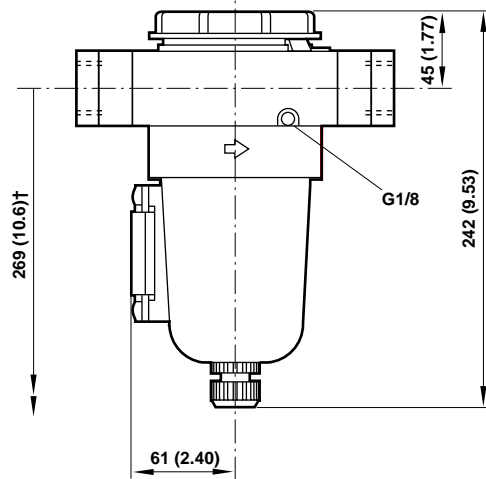
**Dimensions mm (inches)**



F15 (automatic drain)



F15 (manual drain)

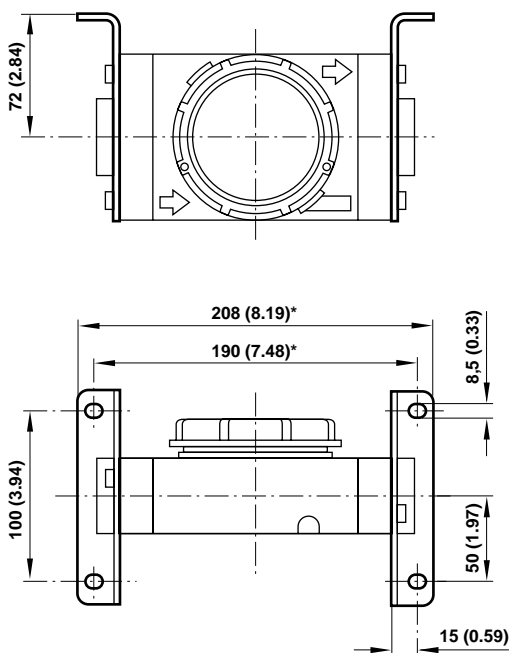


† Minimum clearance required to remove bowl.

\* 200 mm (7.87) for 1 1/4" and 1 1/2" models

**Bracket Mounting**

Use 4 mm (5/32") screws to mount bracket to wall.



**Bracket Kit Reference**

Item	Type	Part Number
Wall Bracket	3/4" model	18-001-979
	1" model	18-001-979
	1 1/4" model	18-001-978
	1 1/2" model	N/A



## Service Kits

Item	Type	Part Number
Service kit	Automatic drain	F15-100A
	Manual drain	F15-100M
Replacement elements	5 µm	5576-97
	25 µm	5576-98
	50 µm	5576-99
Replacement Sight Glass	Pyrex	5872-99
Replacement Drains	Automatic	3000-97
	Manual	684-84

Manual drain service kit includes; insert retaining ring, valve spring, 50 µm element, drain cock body, drain cock spindle assembly and necessary seals and 'o' rings.

Automatic drain service kit includes; cap strainer, strainer, valve spring, 50 µm element and necessary seals and 'o' rings.

## Warning

These products are intended for use in industrial compressed air systems only. Do not use these products where pressures and temperatures can exceed those listed under '**Technical Data**'.

Before using these products with fluids other than those specified, for non-industrial applications, life-support systems, or other applications not within published specifications, consult NORGREN.

Through misuse, age, or malfunction, components used in fluid power systems can fail in various modes. The system designer is warned to consider the failure modes of all component parts used in fluid power systems and to provide adequate safeguards to prevent personal injury or damage to equipment in the event of such failure.

**System designers must provide a warning to end users in the system instructional manual if protection against a failure mode cannot be adequately provided.**

System designers and end users are cautioned to review specific warnings found in instruction sheets packed and shipped with these products.

Water vapor will pass through these units and will condense into liquid if air temperature drops in the downstream system. Install an air dryer if water condensation could have a detrimental effect on the application.

**Olympian  
Puraire High Efficiency Coalescing Filter  
1/2", 3/4", 1" Port Sizes**

- **Olympian plug-in design**
- **Coalescing element removes sub-micron particles and converts oil and water mist to liquid form to drain away**
- **Automatic drain is operated by liquid level and also opens on depressurisation**
- **Oil and dirt contamination in outlet air within ISO 8573.1 Quality Class 1.7.2**


**Technical Data**

Fluid: Compressed air

Maximum pressure:

Metal bowl: 17 bar (250 psig)

Operating temperature\*:

Metal bowl: -20° to +65°C (0° to +150°F)

\* Air supply must be dry enough to avoid ice formation at temperatures below +2°C (+35°F).

Partical removal: 0,01 µm

Maximum remaining oil content: 0,01 ppm at +21°C (+70°F) with an inlet concentration of 15 ppm.

Maximum flow at 6,3 bar (90 psig) inlet pressure†:

G1/2, CDS15 element: 35 dm<sup>3</sup>/s (74 scfm)

G3/4, CDS25 element: 35 dm<sup>3</sup>/s (74 scfm)

G1, CDS25 element: 60 dm<sup>3</sup>/s (127 scfm)

† To maintain stated oil removal performance

Automatic drain connection: 1/8"

Automatic drain operating conditions:

Minimum pressure: 0,7 bar (10 psig).

Drain opens when bowl pressure drops below 0,2 bar (3 psig).

Minimum air flow: 1 dm<sup>3</sup>/s (2 scfm) required to close drain.

Nominal bowl sizes:

1 litre (1 quart US)

0,5 litre (1 pint US)

Materials:

Body: Aluminium

Yoke:Aluminium

Metal bowl: Aluminium

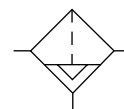
Element and activated carbon pack: Composite materials

Elastomers: Synthetic rubber

**Ordering Information**

See *Ordering Information* on the following pages.

**It is recommended that an appropriate pre-filter be fitted upstream of these units to remove coarse contaminants.**

**ISO Symbol**


Automatic Drain



### Typical Performance Characteristics

Inlet Pressure		Maximum Flow*					
		G1/2 CDS15		G3/4 CDS25		G1 CDS25	
bar	(psig)	dm <sup>3</sup> /s	(scfm)	dm <sup>3</sup> /s	(scfm)	dm <sup>3</sup> /s	(scfm)
1	(15)	14	(30)	14	(30)	24	(51)
3	(45)	24	(51)	24	(51)	41	(87)
5	(70)	31	(66)	31	(66)	53	(112)
6,3	(90)	35	(74)	35	(74)	60	(127)
7	(100)	36,7	(78)	36,7	(78)	63	(133)
9	(130)	42	(89)	42	(89)	72	(153)

\* Maximum flow to maintain stated oil removal performance.

### Ordering Information.

Models listed include ISO G threads, automatic drain.

Port Size	Model	Weight kg (lb)
G1/2	F53-415-A0GD	2,38 (5.29)
G3/4	F53-625-A0MD	2,72 (6.04)
G1	F53-825-A0MD	2,66 (5.91)

For replacement Filter (without yoke) substitute '0' at 4th and 'O' at 10th digits eg: F53-025-A0GO.

### Alternative Models



Port Size	Substitute
1/2"	4*
3/4"	6
1"	8

Option	Substitute
CDS15, short bowl	1 5*
CDS25, long bowl	2 5

Drain	Substitute
Automatic	A
Manual	M

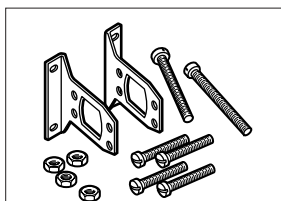
Thread	Substitute
PTF	A
ISO Rc taper	B
ISO G parallel	D

Option	Substitute
Short bowl, without sight glass	G*
Long bowl, without sight glass	M

Element	Substitute
Oil removal	0

\* 1/2 only available with CS15 element and short bowl.

### Accessories



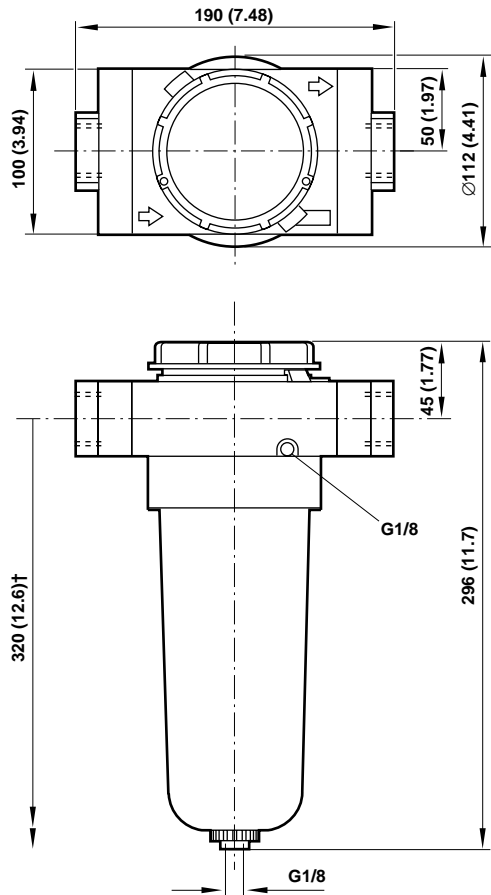
Wall Mounting Bracket

G3/4	18-001-979
G1	18-001-979
G1 1/4	18-001-978
G1 1/2	N/A

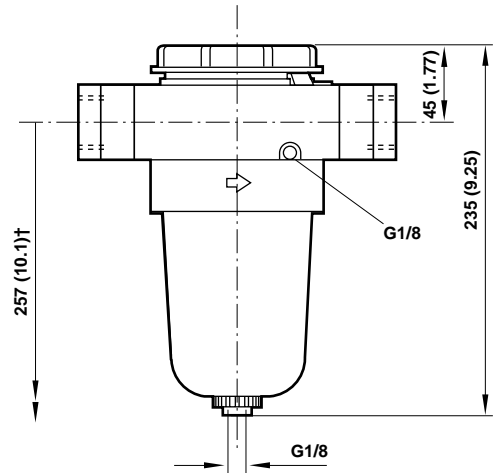


### Dimensions mm (inches)

CDS25 (long bowl)



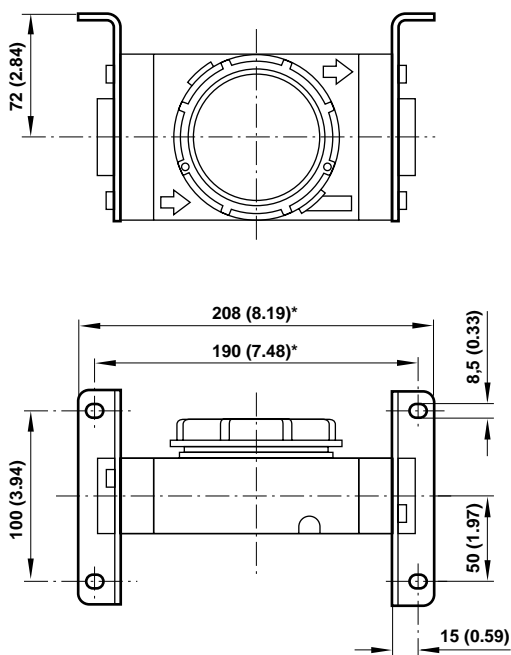
CDS15 (short bowl)



† Minimum clearance required to remove bowl.

### Bracket Mounting

Use 4 mm (5/32") screws to mount bracket to wall.



### Bracket Kit Reference

Item	Type	Part Number
Wall Bracket	1/2" model	18-001-979
	3/4" model	18-001-979
	1" model	18-001-979



## Service Kits

Item	Type	Part Number
Service kit	CDS15 standard bowl	F53-100
	CDS25 long bowl	F53-120
Gasket kit		F53-GK
Replacement drain	Automatic	3000-04

Service kit includes; element kit and necessary seals and 'o' rings.

## Warning

These products are intended for use in industrial compressed air systems only. Do not use these products where pressures and temperatures can exceed those listed under **'Technical Data'**.

Before using these products with fluids other than those specified, for non-industrial applications, life-support systems, or other applications not within published specifications, consult NORGREN.

Through misuse, age, or malfunction, components used in fluid power systems can fail in various modes. The system designer is warned to consider the failure modes of all component parts used in fluid power systems and to provide adequate safeguards to prevent personal injury or damage to equipment in the event of such failure.

**System designers must provide a warning to end users in the system instructional manual if protection against a failure mode cannot be adequately provided.**

System designers and end users are cautioned to review specific warnings found in instruction sheets packed and shipped with these products.

Water vapor will pass through these units and will condense into liquid if air temperature drops in the downstream system. Install an air dryer if water condensation could have a detrimental effect on the application.



**Olympian  
Ultraire Oil Removing Coalescing Filter  
1/2", 3/4", 1" Port Sizes**

- **Olympian plug-in design**
- **Oil mist contamination in outlet air normally complies with BS 4275 (1974)†**
- **Provide two stage filtration. Main coalescing filter element removes sub-micron particles and converts oil and water mist to liquid form to drain away. Activated carbon pack in second stage acts as an adsorbent to assist in the removal of some hydro-carbon gases and any oil carry-over from previous stage**
- **Ultra high efficiency, suitable for instrumentation, paint spraying, food handling and similar demanding applications**
- **Oil and dirt contamination in outlet air within ISO 8573.1 Quality Class 1.7.1**

† These units will not remove carbon monoxide, carbon dioxide or other toxic gases or fumes.



#### Technical Data

Fluid: Compressed air

Maximum pressure:

Metal bowl: 17 bar (250 psig)

Operating temperature\*: -20° to +65°C (0° to +150°F)

\* Air supply must be dry enough to avoid ice formation at temperatures below +2°C (+35°F).

Partical removal: 0,01 µm.

Maximum remaining oil content: 0,003 ppm at +21°C (+70°F) with an inlet concentration of 15 ppm

Approximate flow at 6,3 bar (90 psig) inlet pressure†:

G1/2, CDS15 element: 25 dm<sup>3</sup>/s (53 scfm)

G3/4, CDS25 element: 35 dm<sup>3</sup>/s (74 scfm)

G1, CDS25 element: 60 dm<sup>3</sup>/s (127 scfm)

† To maintain stated oil removal performance

Automatic drain connection: 1/8"

Automatic drain operating conditions:

Minimum pressure: 0,7 bar (10 psig).

Drain opens when bowl pressure drops below 0,2 bar (3 psig).

Minimum air flow: 1 dm<sup>3</sup>/s (2 scfm) required to close drain.

Nominal bowl sizes:

1 litre (1 quart US)

0,5 litre (1 pint US)

Materials:

Body: Aluminium

Yoke:Aluminium

Metal bowl: Aluminium

Sight glass: Pyrex

Element and activated carbon pack: Composite materials

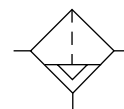
Elastomers: Synthetic rubber

#### Ordering Information

See *Ordering Information* on the following pages.

**It is recommended that an appropriate pre-filter be fitted upstream of these units to remove coarse contaminants.**

#### ISO Symbol



Automatic Drain



### Typical Performance Characteristics

Inlet Pressure		Maximum Flow*					
		G1/2 CDS15		G3/4 CDS25		G1 CDS25	
bar	(psig)	dm <sup>3</sup> /s	(scfm)	dm <sup>3</sup> /s	(scfm)	dm <sup>3</sup> /s	(scfm)
1	(15)	10	(21)	14	(30)	24	(51)
3	(45)	17,25	(37)	24	(51)	41	(87)
5	(70)	22,25	(47)	31	(66)	53	(112)
6,3	(90)	25	(53)	35	(74)	60	(127)
7	(100)	26,25	(56)	36,7	(78)	63	(133)
9	(130)	30	(64)	42	(89)	72	(153)

\* Maximum flow to maintain stated oil removal performance.

### Ordering Information. Models listed include ISO G threads, automatic drain.

Port Size	Model	Weight kg (lb)
G1/2	F52-415-AAGD	4,44 (9.87)
G3/4	F52-625-AAMD	5,05 (11.22)
G1	F52-825-AAMD	5,05 (11.22)

### Alternative Models



Port Size	Substitute
1/2"	4*
3/4"	6
1"	8

Option	Substitute
CDS15, short bowl	1 5*
CDS25, long bowl	2 5

Drain	Substitute
Automatic	A
Manual	M

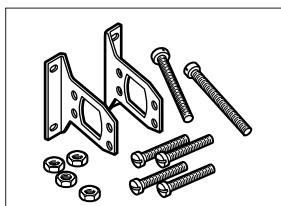
Thread	Substitute
PTF	A
ISO Rc taper	B
ISO G parallel	D

Option	Substitute
Short bowl, without sight glass	G*
Long bowl, without sight glass	M

Element	Substitute
Activated carbon	A

\* 1/2 only available with CS15 element and short bowl.

### Accessories

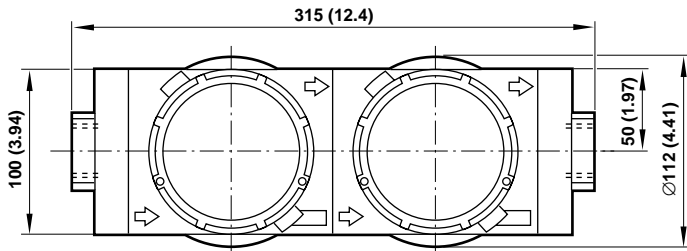


Wall Mounting Bracket

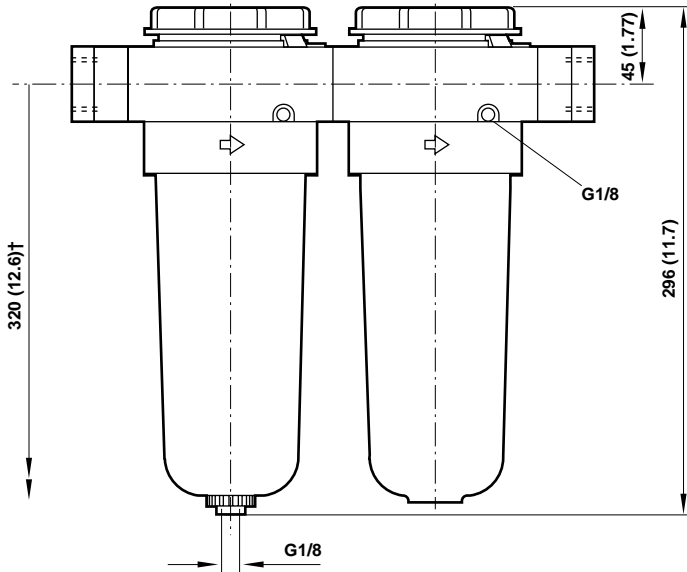
G1/2	18-001-979
G3/4	18-001-979
G1	18-001-979



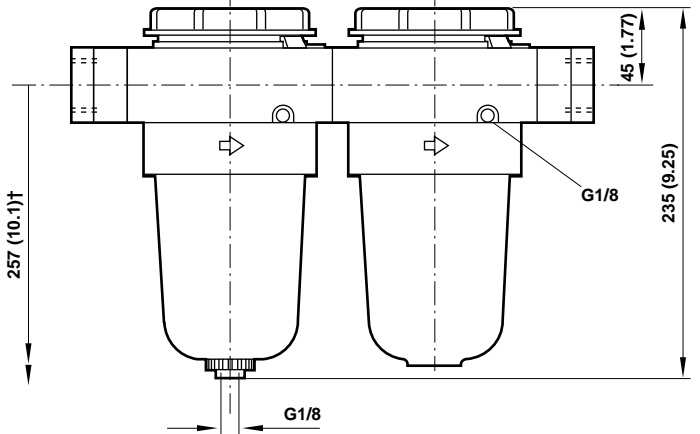
**Dimensions mm (inches)**



CDS25 (long bowl)



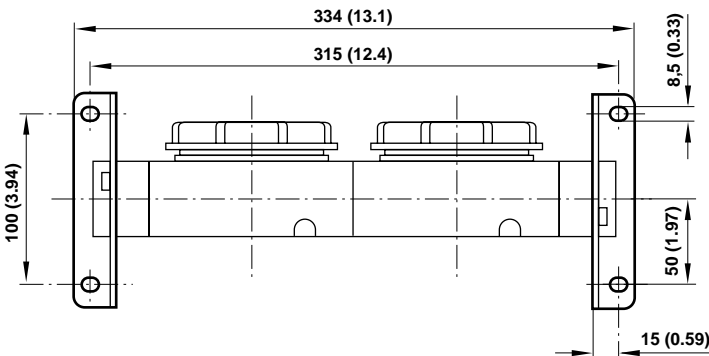
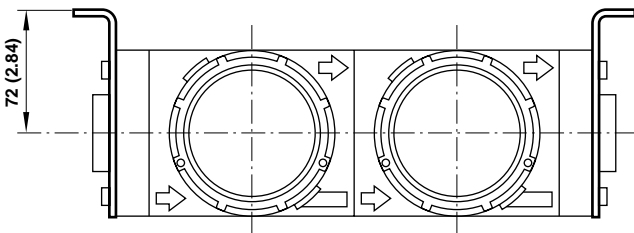
CDS15 (short bowl)



† Minimum clearance required to remove bowl.

**Bracket Mounting**

Use 4 mm (5/32") screws to mount bracket to wall.



**Bracket Kit Reference**

Item	Type	Part Number
Wall Bracket	1/2" model	18-001-979
	3/4" model	18-001-979
	1" model	18-001-979



## Service Kits

Item	Type	Part Number
Service kit	CDS15 standard bowl	F52-100
	CDS25 long bowl	F52-120
Replacement Carbon Element	CDS15 standard bowl	665-72
	CDS25 long bowl	665-70
Gasket kit		F52-GK
Replacement drain	Automatic	3000-04

Service kit includes; first stage element kit, second stage element kit and necessary seals and 'o' rings.

## Warning

These products are intended for use in industrial compressed air systems only. Do not use these products where pressures and temperatures can exceed those listed under '**Technical Data**'.

Before using these products with fluids other than those specified, for non-industrial applications, life-support systems, or other applications not within published specifications, consult NORGREN.

Through misuse, age, or malfunction, components used in fluid power systems can fail in various modes. The system designer is warned to consider the failure modes of all component parts used in fluid power systems and to provide adequate safeguards to prevent personal injury or damage to equipment in the event of such failure.

**System designers must provide a warning to end users in the system instructional manual if protection against a failure mode cannot be adequately provided.**

System designers and end users are cautioned to review specific warnings found in instruction sheets packed and shipped with these products.

Water vapor will pass through these units and will condense into liquid if air temperature drops in the downstream system. Install an air dryer if water condensation could have a detrimental effect on the application.

**Olympian  
Regulator  
3/4", 1", 1 1/4", 1 1/2" Port Sizes**

- Olympian plug in design
- Robust and compact
- High flow unit with large valve and diaphragm
- Push to lock adjusting knob with tamper resistant option
- Excellent flow and regulation characteristics


**Technical Data**

Fluid: Compressed air

Maximum pressure:  
20 bar (290 psig)

Operating temperature\*:  
-20° to +80°C (0° to +175°F)

\* Air supply must be dry enough to avoid ice formation at temperatures below +2°C (+35°F).

Typical flow at 10 bar (150 psig) inlet pressure, 6,3 bar (90 psig) set pressure and a droop of 1 bar (15 psig) from set:  
180 dm<sup>3</sup>/s (381 scfm)

Gauge ports: ISO G1/8

Materials:

Body: Aluminium

Bonnet: Aluminium

Adjusting knob: Acetal resin

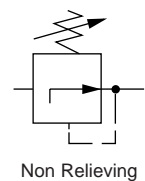
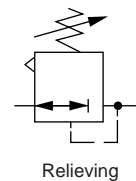
Valve: Brass

Optional T-bar adjusting screw: Steel

Yoke: Aluminium

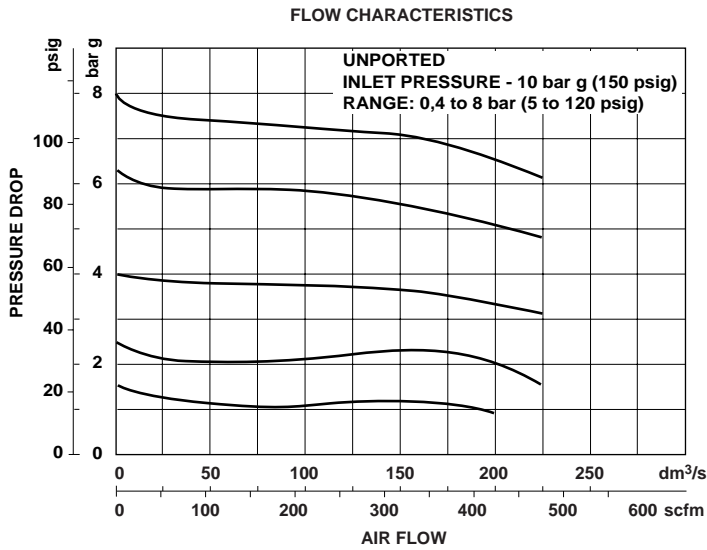
**Ordering Information**

See *Ordering Information* on the following pages.

**ISO Symbols**




## Typical Performance Characteristics



**Ordering Information.** Models listed include ISO G threads, knob adjustment, relieving diaphragm, 0,3 to 10 bar (5 to 150 psig) outlet pressure adjustment range\* without gauge.

Port Size	Model	Weight kg (lb)
G3/4	R15-600-RNLD	2,04 (4.53)
G1	R15-800-RNLD	2,04 (4.53)
G1 1/4	R15-A00-RNLD	2,08 (4.62)
G1 1/2	R15-B00-RNLD	2,12 (4.71)

For replacement Regulator (without yoke) substitute '0' at 4th and '0' at 10th digits eg: R15-000-RNLO.

## Alternative Models

R 1 5 - ★ ★ ★ - ★ ★ ★ ★

Port Size	Substitute
3/4"	6
1"	8
1 1/4"	A
1 1/2"	B

Option	Substitute
Adjusting knob	0 0
T-bar	0 1**
Max. adjustment	2 0***

Thread	Substitute
PTF	A
ISO Rc taper	B
ISO G parallel	D

Outlet Pressure Adjustment Range*	Substitute
0 to 4 bar (0 to 60 psig)	F
0,4 to 8 bar (5 to 120 psig)	L
0,7 to 17 bar (10 to 250 psig)	S**

Gauge	Substitute
With	G
Without	N

Type	Substitute
Relieving	R
Non relieving	N

\* Outlet pressure can be adjusted to pressures in excess of, and less than, those specified. Do not use these units to control pressures outside of the specified ranges.

\*\* Units with 17 bar (250 psig) adjustment range are available only with the T-bar adjustment; therefore substitute '01' at the 5th and 6th digits and 'S' at the 9th position.

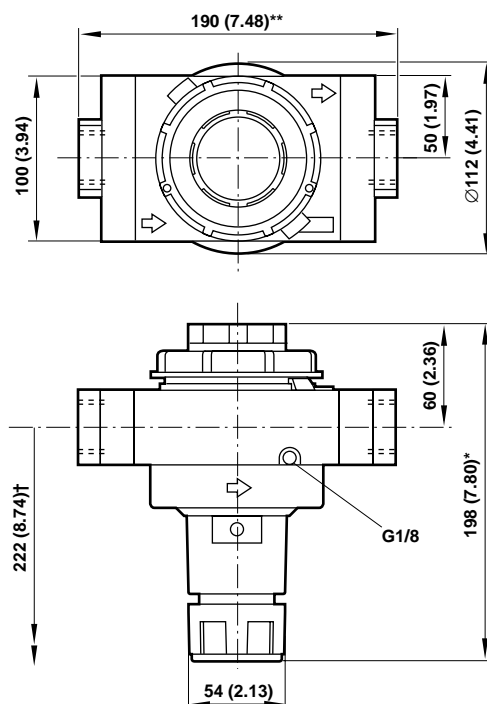
\*\*\* Contact Technical Sales for setting conditions.



### Accessories

<p>Wall Mounting Bracket</p>		<p>Key Lock Bonnet</p>	<p>Ø 50 mm Pressure Gauge</p>		
			R1/8 Connection	1/8 PTF Connection	
G3/4	18-001-979	5803-98	4 bar (60 psig):	18-013-012	18-013-202
G1	18-001-979		10 bar (150 psig):	18-013-013	18-013-204
G1 1/4	18-001-978		25 bar (360 psig):	18-013-014	18-013-206
G1 1/2	N/A				

### Dimensions mm (inches)



\* Reduces by 4 mm (0.16") with knob in locked position. Add 37 mm (1.46") for unit with T-handle

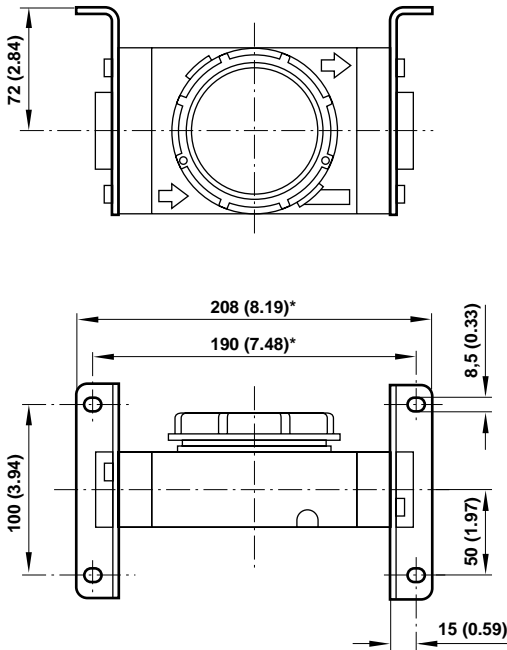
† Minimum clearance required to remove unit.

\*\* 200 mm (7.87) for 1 1/4" and 1 1/2" models



### Bracket Mounting

Use 4 mm (5/32") screws to mount bracket to wall.



### Bracket Kit Reference

Item	Type	Part Number
Wall Bracket	3/4" model	18-001-979
	1" model	18-001-979
	1 1/4" model	18-001-978
	1 1/2" model	N/A

### Service Kits

Item	Type	Part Number
Service kit	Relieving	R15-100R
	Non relieving	R15-100N

Service kit includes, valve spring, slip ring, valve assembly, diaphragm assembly and necessary seals and 'o' rings.

### Warning

These products are intended for use in industrial compressed air systems only. Do not use these products where pressures and temperatures can exceed those listed under 'Technical Data'.

Before using these products with fluids other than those specified, for non-industrial applications, life-support systems, or other applications not within published specifications, consult NORGREN.

Through misuse, age, or malfunction, components used in fluid power systems can fail in various modes. The system designer is warned to consider the failure modes of all component parts used in fluid power systems and to provide adequate safeguards to prevent personal injury or damage to equipment in the event of such failure.

**System designers must provide a warning to end users in the system instructional manual if protection against a failure mode cannot be adequately provided.**

System designers and end users are cautioned to review specific warnings found in instruction sheets packed and shipped with these products.

Water vapor will pass through these units and will condense into liquid if air temperature drops in the downstream system. Install an air dryer if water condensation could have a detrimental effect on the application.



**Olympian  
Filter/Regulator  
3/4", 1", 1 1/4", 1 1/2" Port Sizes**

- **Olympian plug in design**
- **High Efficiency water and particle removal**
- **Push to lock adjusting knob with tamper resistant option**


**Technical Data**

Fluid: Compressed air

Maximum pressure:

Metal bowl: 17 bar (250 psig)

Operating temperature\*:

Metal bowl: -20° to +80°C (0° to +175°F)

\* Air supply must be dry enough to avoid ice formation at temperatures below +2°C (+35°F).

Partical removal: 5, 25 or 50 µm. Within ISO 8573-1, Class 3 and Class 5

Typical flow at 10 bar (150 psig) inlet pressure, 6,3 bar (90 psig) set pressure and a droop of 1 bar (15 psig) from set: 230 dm<sup>3</sup>/s (487 scfm)

Automatic drain connection: 1/8"

Automatic drain operating conditions:

Minimum pressure: 0,7 bar (10 psig).

Drain opens when bowl pressure drops below 0,2 bar (3 psig).

Minimum air flow: 1 dm<sup>3</sup>/s (2 scfm) required to close drain.

Nominal bowl size:

0,5 litre (1 pint US)

Gauge ports: ISO G1/8

Materials:

Body: Aluminium

Bonnet: Aluminium

Adjusting knob: Acetal resin

Valve: Brass

Optional T-bar adjusting screw: Steel

Yoke: Aluminium

Metal bowl: Aluminium

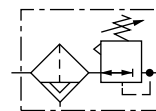
Sight glass: Pyrex

Element: Sintered bronze

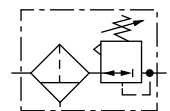
Elastomers: Synthetic rubber

**Ordering Information**

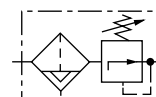
See *Ordering Information* on the following pages.

**ISO Symbols**


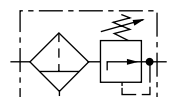
Automatic Drain  
Relieving



Manual Drain  
Relieving



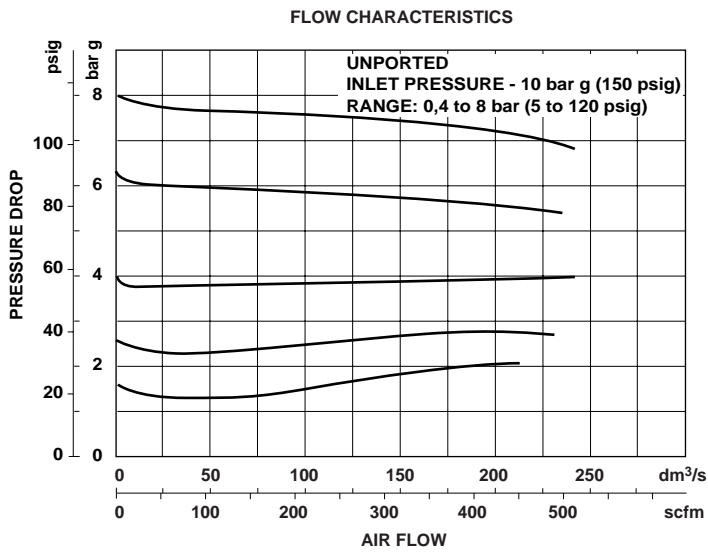
Automatic Drain  
Non Relieving



Manual Drain  
Non Relieving



## Typical Performance Characteristics



**Ordering Information.** Models listed include ISO G threads, knob adjustment, automatic drain, 50 µm element, relieving diaphragm and 0,3 to 10 bar (5 to 150 psig) outlet pressure adjustment range\* without gauge.

Port Size	Model	Weight kg (lb)
G3/4	B15-696-F3LD	3,16 (7.02)
G1	B15-896-F3LD	3,12 (6.93)
G1 1/4	B15-A96-F3LD	3,14 (6.98)
G1 1/2	B15-B96-F3LD	3,18 (7.07)

For replacement Filter/Regulator (without yoke) substitute '0' at 4th and 'O' at 10th digits eg: B15-096-F3LO.

## Alternative Models

B 1 5 - ★ ★ ★ - ★ ★ ★ ★

Adjustment	Substitute
Knob	B
T-bar	A**

Port Size	Substitute
3/4"	6
1"	8
1 1/4"	A
1 1/2"	B

Option	Substitute
With sight glass, relieving	9 6
Without sight glass, relieving	2 4
With sight glass, non relieving	9 8
Without sight glass, non relieving	2 6

Thread	Substitute
PTF	A
ISO Rc taper	B
ISO G parallel	D

Outlet Pressure Adjustment Range*	Substitute
0 to 4 bar (0 to 60 psig)	F
0,4 to 8 bar (5 to 120 psig)	L
0,7 to 17 bar (10 to 250 psig)	S**

Element	Substitute
5 µm	1
25 µm	2
50 µm	3

Drain	Substitute
Automatic	F
Manual	B

\* Outlet pressure can be adjusted to pressures in excess of, and less than, those specified. Do not use these units to control pressures outside of the specified ranges.

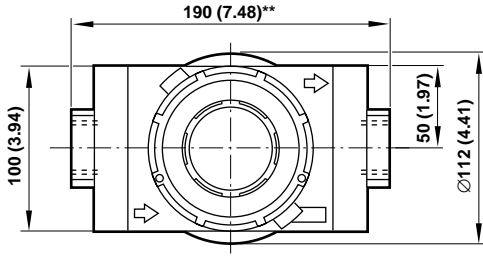
\*\* Units with 17 bar (250 psig) adjustment range are available only with the T-bar adjustment; therefore substitute 'A' at the 1st digit and 'S' at the 9th position.



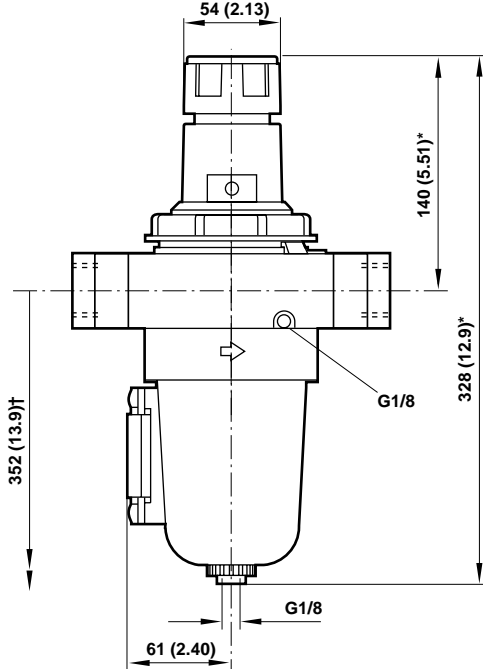
**Accessories**

<p>Wall Mounting Bracket</p>		<p>Key Lock Bonnet</p>	<p>Ø 50 mm Pressure Gauge</p>		
			R1/8 Connection	1/8 PTF Connection	
G3/4	18-001-979	5803-98	4 bar (60 psig):	18-013-012	18-013-202
G1	18-001-979		10 bar (150 psig):	18-013-013	18-013-204
G1 1/4	18-001-978		25 bar (360 psig):	18-013-014	18-013-206
G1 1/2	N/A				

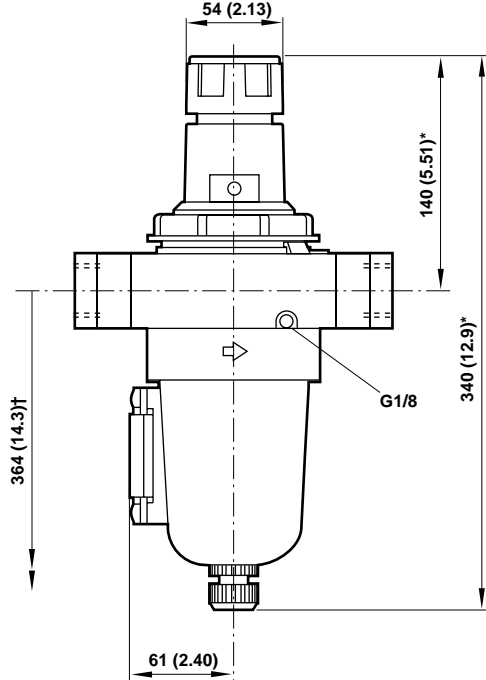
**Dimensions mm (inches)**



B15 (automatic drain)



B15 (manual drain)

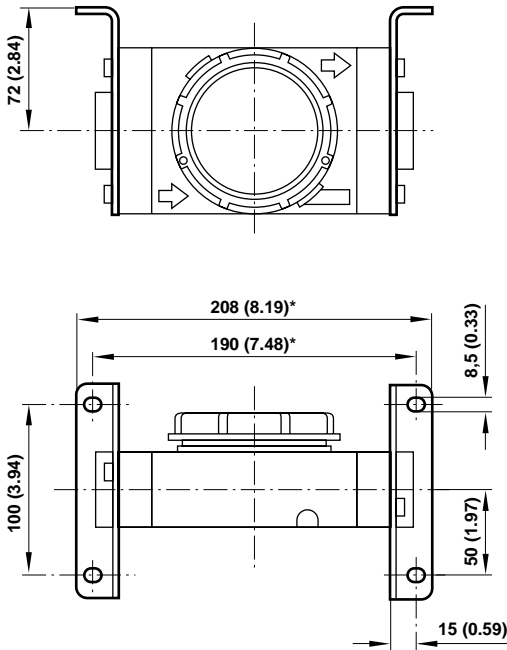


\* Reduces by 4 mm (0.16") with knob in locked position. Add 37 mm (1.46") for unit with 'T' handle  
 † Minimum clearance required to remove bowl.  
 \*\* 200 mm (7.87) for 1 1/4" and 1 1/2" models



## Bracket Mounting

Use 4 mm (5/32") screws to mount bracket to wall.



## Bracket Kit Reference

Item	Type	Part Number
Wall Bracket	3/4" model	18-001-979
	1" model	18-001-979
	1 1/4" model	18-001-978
	1 1/2" model	N/A

## Service Kits

Item	Type	Part Number
Service kit	Automatic drain, relieving	B15-100RA
	Manual drain, relieving	B15-100RM
	Automatic drain, non relieving	B15-100NA
	Manual drain, non relieving	B15-100NM
Replacement elements	5 µm	5576-97
	25 µm	5576-98
	50 µm	5576-99
Replacement Sight Glass	Pyrex	5827-99
Replacement Drains	Automatic	3000-97
	Manual	684-84

Manual drain service kit includes; insert retaining ring, valve spring, 50 µm element, slip ring, valve assembly, diaphragm assembly, drain cock body, drain cock spindle assembly and necessary seals and 'o' rings.

Automatic drain service kit includes; cap strainer, strainer, valve spring, 50 µm element, slip ring, valve assembly, diaphragm assembly and necessary seals and 'o' rings.

## Warning

These products are intended for use in industrial compressed air systems only. Do not use these products where pressures and temperatures can exceed those listed under 'Technical Data'.

Before using these products with fluids other than those specified, for non-industrial applications, life-support systems, or other applications not within published specifications, consult NORGREN.

Through misuse, age, or malfunction, components used in fluid power systems can fail in various modes. The system designer is warned to consider the failure modes of all component parts used in fluid power systems and to provide adequate safeguards to prevent personal injury or damage to equipment in the event of such failure.

**System designers must provide a warning to end users in the system instructional manual if protection against a failure mode cannot be adequately provided.**

System designers and end users are cautioned to review specific warnings found in instruction sheets packed and shipped with these products.

Water vapor will pass through these units and will condense into liquid if air temperature drops in the downstream system. Install an air dryer if water condensation could have a detrimental effect on the application.

**Olympian  
Micro-Fog and Oil-Fog Lubricator  
3/4", 1, 1 1/4", 1 1/2" Port Sizes**

- **Olympian plug-in design**
- **Built in flow sensor gives almost consistant oil/air ratio over a wide range of flows**
- **0,5 and 1 litre (1 pint and 1 quart US) models can be filled under pressure**
- **Simple and accurate drip rate adjustment, snap action lock**
- **Ideal for general lubrication applications**

Use Micro-Fog models in applications with one or more points of lubrication.

Use Oil-Fog models to lubricate a single tool, cylinder or other air driven device.

Use Fixed Venturi for high flow general purpose applications.



### Technical Data

Fluid: Compressed air

Maximum pressure: 17 bar (250 psig)

Operating temperature\*: -20° to +80°C (0° to +175°F)

\* Air supply must be dry enough to avoid ice formation at temperatures below +2°C (+35°F).

Start point (i.e. minimum flow required for lubricator operation) at

6,3 bar (90 psig) inlet pressure:

Micro-Fog: 6 dm<sup>3</sup>/s (13 scfm)

Oil-Fog: 6 dm<sup>3</sup>/s (13 scfm)

Fixed venturi: 52 dm<sup>3</sup>/s (110 scfm)

Typical flow at 6,3 bar (90 psig) inlet pressure and 0,5 bar

(7 psig) pressure drop:

Micro-Fog and Oil-Fog: 175 dm<sup>3</sup>/s (370 scfm)

Fixed venturi: 400 dm<sup>3</sup>/s (848 scfm)

Nominal bowl sizes:

0,5 litre (1 pint US)

1 litre (1 quart US)

8 litre (2 gallons US)

20 litre (5 gallons US)

Recommended lubricants: See page N/AL.8.900.935

Materials:

Body: Aluminium

Yoke: Aluminium

Bowl, 0,5 litre (1 pint US) and 1 litre (1 quart US): Aluminium

Bowl sight glass: Pyrex

Reservoirs, 8 litre (2 gallons US) and 20 litre (5 gallons US):

Steel

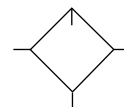
Reservoir sight tube: Polythene

Elastomers: Synthetic rubber

### Ordering Information

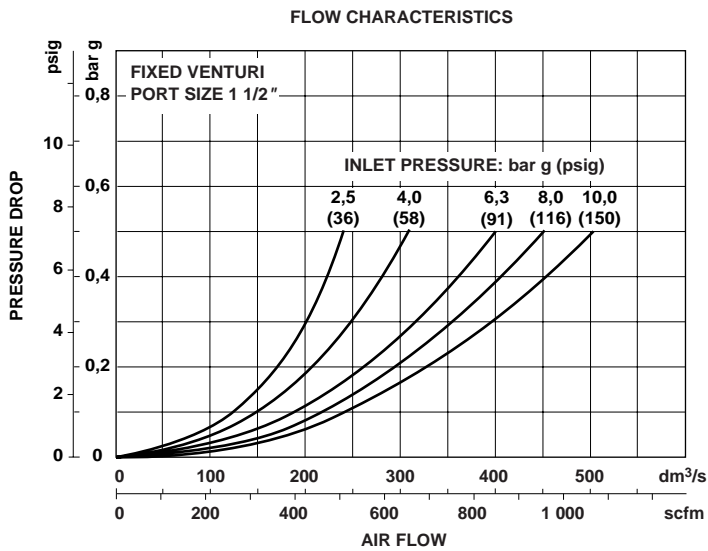
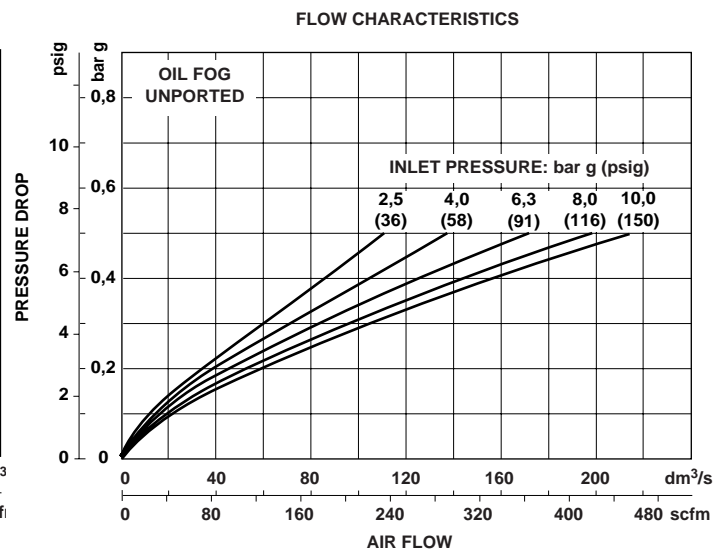
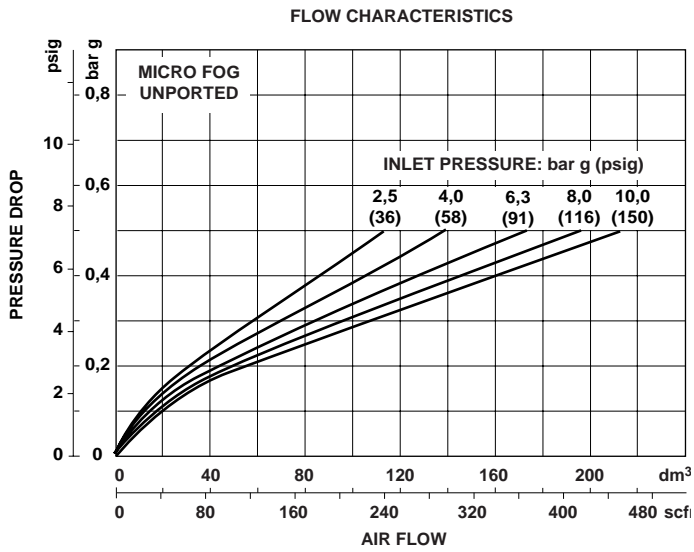
See *Ordering Information* on the following pages.

### ISO Symbol





## Typical Performance Characteristics



**Ordering Information.** Models listed include ISO G threads, 0,5 litre (1 pint US) reservoir without drain.

Type	Port Size	Model	Weight kg (lb)
Micro-Fog	G3/4	L15-600-MP9D	2,31 (5.13)
	G1	L15-800-MP9D	2,25 (5.00)
	G1 1/4	L15-A00-MP9D	2,29 (5.09)
	G1 1/2	L15-B00-MP9D	2,33 (5.18)

### Alternative Models

L 1 5 - ★ 0 ★ - ★ P ★ ★

Port Size	Substitute
3/4"	6
1"	8
1 1/4"	A
1 1/2"	B

Options	Substitute
Standard	0
Fixed venturi	1*

Type	Substitute
Oil-Fog	O*
Micro-Fog	M

Threads	Substitute
PTF	A
ISO Rc taper	B
ISO G parallel	G

Bowl	Substitute
0,5 litre (1 pint US), no drain	9
1 litre (1 quart US), no drain	8
0,5 litre (1 pint US) with drain	7
1 litre (1 quart US) with drain	D
8 litre (2 gallons US)	J
20 litre (5 gallons US)	K

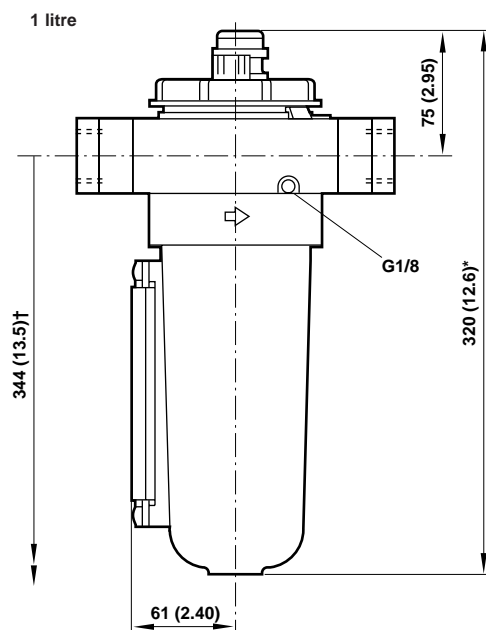
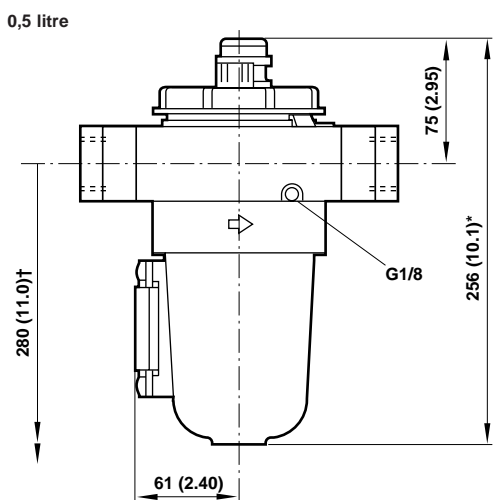
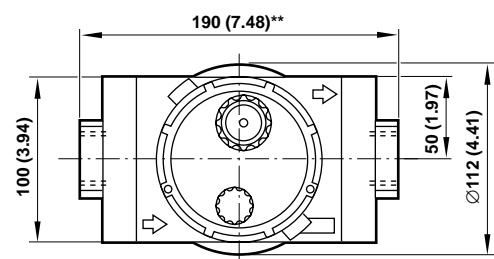
\* Fixed venturi, Oil Fog only



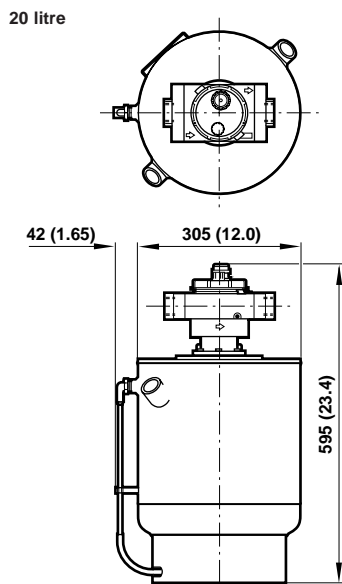
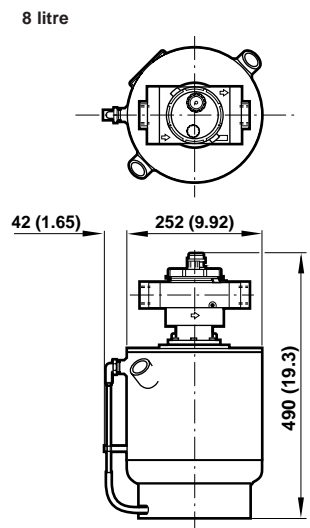
### Accessories

Wall Mounting Bracket	Tamper Resistant Wire	Quick Fill Nipple	Level Switch	Remote Fill Kit
G3/4 18-001-979	2117-01 (pack of 10)	18-011-021	8 litre: 18-007-975	18-027-980
G1 18-001-979			20 litre: 18-007-974	
G1 1/4 18-001-978				
G1 1/2 N/A				

### Dimensions mm (inches)



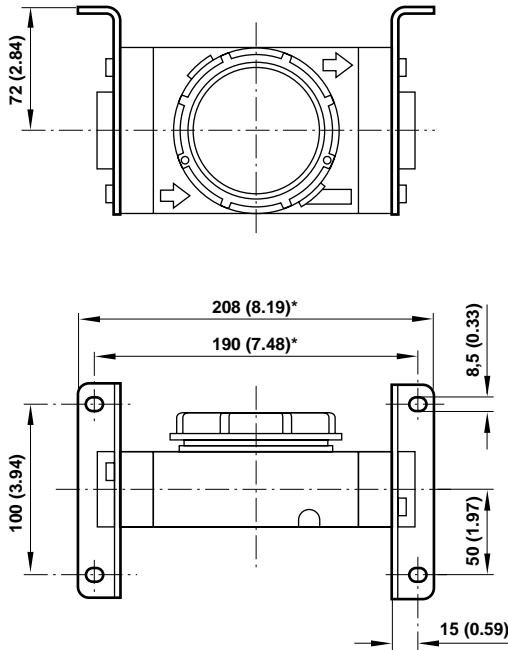
† Minimum clearance required to remove bowl.  
 \* For 1/4 turn manual drain add 16 mm (0.63") on 0,5 and 1 litre bowls.  
 \*\* 200 mm (7.87") for 1 1/4" and 1 1/2" models.





### Bracket Mounting

Use 4 mm (5/32") screws to mount bracket to wall.



### Bracket Kit Reference

Item	Type	Part Number
Wall Bracket	3/4" model	18-001-979
	1" model	18-001-979
	1 1/4" model	18-001-978
	1 1/2" model	N/A

### Service Kits

Item	Type	Part Number
Service kit	Micro-Fog	L15-100M
	Oil-Fog	L15-1000
Replacement Sight Glass for 0,5 litre (1 pint US) bowls	Pyrex	5872-99
Replacement Drain	Manual	684-84

Service kit includes sight dome assembly, screen, filler plug, ball, threaded cap and necessary seals and o-rings. Oil-Fog service kit also contains spring.

### Warning

These products are intended for use in industrial compressed air systems only. Do not use these products where pressures and temperatures can exceed those listed under 'Technical Data'.

Before using these products with fluids other than those specified, for non-industrial applications, life-support systems, or other applications not within published specifications, consult NORGREN.

Through misuse, age, or malfunction, components used in fluid power systems can fail in various modes. The system designer is warned to consider the failure modes of all component parts used in fluid power systems and to provide adequate safeguards to prevent personal injury or damage to equipment in the event of such failure.

**System designers must provide a warning to end users in the system instructional manual if protection against a failure mode cannot be adequately provided.**

System designers and end users are cautioned to review specific warnings found in instruction sheets packed and shipped with these products.

Water vapor will pass through these units and will condense into liquid if air temperature drops in the downstream system. Install an air dryer if water condensation could have a detrimental effect on the application.



**Olympian  
Pressure Relief Valve  
3/4", 1", 1 1/4", 1 1/2", Port Sizes**

- **Olympian plug in design**
- **Helps protect compressed air systems from over pressure by retarding excessive pressure build up**
- **High relief capacity, sensitive and accurate**
- **Integral pilot operated design, suitable for in-line or indirect mounting**
- **Threaded relief port for silencer or piped exhaust**


**Technical Data**

Fluid: Compressed air

Operating temperature\*:

-20° to +80°C (0° to +175°F)

\* Air supply must be dry enough to avoid ice formation at temperatures below +2°C (+35°F).

Gauge ports: ISO G1/8

Exhaust port: ISO G1

Materials:

Body: Aluminium

Intermediate body: Aluminium

Bonnet: Aluminium

Bottom plug: Aluminium

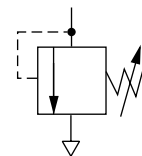
Adjusting screw: Steel

Elastomers: Synthetic rubber

Yoke: Aluminium

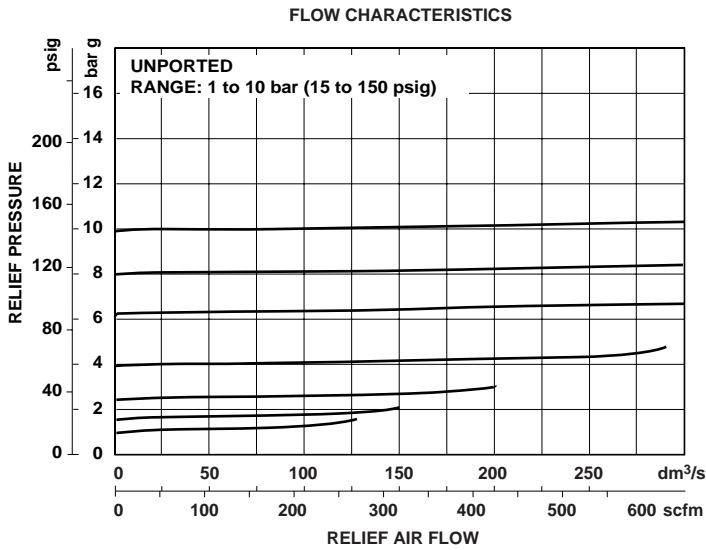
**Ordering Information**

See *Ordering Information* on the following pages.

**ISO Symbol**




## Typical Performance Characteristics



**Ordering Information.** Models listed include ISO G threads, 1 to 10 bar (15 to 150 psig) operating adjustment range\* without gauge.

Port Size	Model	Weight kg (lb)
G3/4	V15-603-NNMD	2,21 (4.91)
G1	V15-803-NNMD	2,20 (4.89)
G1 1/4	V15-A03-NNMD	2,22 (4.93)
G1 1/2	V15-B03-NNMD	2,26 (5.02)

### Alternative Models

Port Size	Substitute				
3/4"	6	<div style="display: flex; justify-content: center; align-items: center;"> <div style="border: 1px solid black; padding: 2px; margin-right: 5px;">V 1 5</div> <div style="margin: 0 5px;">-</div> <div style="display: flex; gap: 2px;"> <span style="border: 1px solid black; padding: 0 2px;">★</span> <span style="border: 1px solid black; padding: 0 2px;">★</span> <span style="border: 1px solid black; padding: 0 2px;">★</span> </div> <div style="margin: 0 5px;">-</div> <div style="display: flex; gap: 2px;"> <span style="border: 1px solid black; padding: 0 2px;">★</span> <span style="border: 1px solid black; padding: 0 2px;">★</span> <span style="border: 1px solid black; padding: 0 2px;">★</span> <span style="border: 1px solid black; padding: 0 2px;">★</span> </div> </div>	Thread	Substitute	
1"	8		PTF	A	
1 1/4"	A		ISO Rc taper	B	
1 1/2"	B		ISO G parallel	D	
Option	Substitute				
Slotted screw	0 3	Outlet Pressure Adjustment Range*	Substitute		
		0,4 to 4 bar (0 to 60 psig)	F		
		1 to 10 bar (15 to 150 psig)	M		
		0.7 to 17 bar (10 to 250 psig)	S		
Relief Pressure	Substitute				
Not set	N	Gauge	Substitute		
		With	G		
		Without	N		

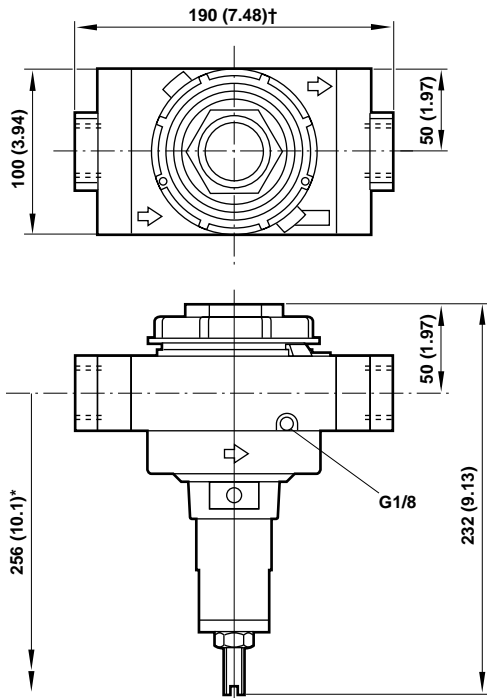
\* Relief valve can be adjusted to pressures in excess of, and less than, those specified. Do not use these units to control pressures outside of the specified ranges.

### Accessories

<p>Wall Mounting Bracket</p>	<p>Ø 50 mm Pressure Gauge</p>	<p>Silencer</p>
	<p>R1/8 Connection    1/8 PTF Connection</p>	
G3/4    18-001-979	4 bar (60 psig):    18-013-012    18-013-202	MB008B (R1)
G1    18-001-979	10 bar (150 psig):    18-013-013    18-013-204	
G1 1/4    18-001-978	25 bar (360 psig):    18-013-014    18-013-206	
G1 1/2    N/A		



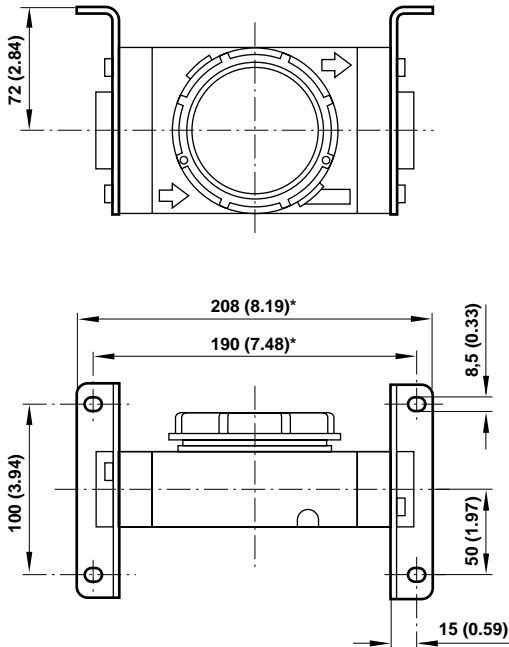
**Dimensions mm (inches)**



\* Minimum clearance required to remove unit.  
 † 200 mm (7.87) for 1 1/4" and 1 1/2" models

**Bracket Mounting**

Use 4 mm (5/32") screws to mount bracket to wall.



**Bracket Kit Reference**

Item	Type	Part Number
Wall Bracket	3/4" model	18-001-979
	1" model	18-001-979
	1 1/4" model	18-001-978
	1 1/2" model	N/A

**Service Kits**

Item	Part Number
Service kit	V15-100

Service kit includes, valve spring, slip ring, valve assembly, pilot diaphragm assembly and necessary seals and o-rings.



## Warning

These products are intended for use in industrial compressed air systems only. Do not use these products where pressures and temperatures can exceed those listed under "Technical Data".

Before using these products with fluids other than those specified, for non-industrial applications, life-support systems, or other applications not within published specifications, consult NORGREN.

Through misuse, age, or malfunction, components used in fluid power systems can fail in various modes. The system designer is warned to consider the failure modes of all component parts used in fluid power systems and to provide adequate safeguards to prevent personal injury or damage to equipment in the event of such failure.

**System designers must provide a warning to end users in the system instructional manual if protection against a failure mode cannot be adequately provided.**

System designers and end users are cautioned to review specific warnings found in instruction sheets packed and shipped with these products.

Water vapor will pass through these units and will condense into liquid if air temperature drops in the downstream system. Install an air dryer if water condensation could have a detrimental effect on the application.

**Olympian  
Shut-off & Lockout Valves  
3/4", 1", 1 1/4", 1 1/2" Port Sizes**

- Olympian plug in design
- Quick action 1/4 turn from full flow to exhaust
- T15 3-port/2-position shut-off valves with exhaust
- Valves can be locked in open or closed position
- Use upstream or downstream of air processing units
- Low pressure drop ball valve design


**Technical Data**

Fluid: Compressed air

Maximum Pressure: 17 bar (250 psig)

Operating Temperature\*: -20° to +80°C (0° to +175°F)

\* Air supply must be dry enough to avoid ice formation at temperatures below +2°C (+35°F).

Cv factor from IN to OUT ports\*\*: 27,5

**Materials:**

Body: Aluminium

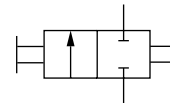
Handle: Zinc

Seals: PTFE

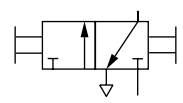
Ball: Brass

**Ordering Information**

See *Ordering Information* on the following page.

**ISO Symbols**


2-Port/2-Position



3-Port/2-Position



**Ordering Information.** Models listed have ISO G threads and include screws and seals for yoke connection.

Port Size	3-Port/2-Position Threaded Exhaust Port (M5)	Weight kg (lbs)	2-Port/2-Position No Exhaust Outlet	Weight kg (lbs)
G3/4	T15-600-E2AD	1,00 (2.21)	T15-600-B2AD	1,00 (2.21)
G1	T15-800-E2AD	0,96 (2.12)	T15-800-B2AD	0,87 (1.92)
G1 1/4	T15-A00-E2AD	0,94 (2.07)	T15-A00-B2AD	1,00 (2.21)
G1 1/2	T15-B00-E2AD	0,98 (2.16)	T15-B00-B2AD	0,98 (2.16)

**Alternative Models**

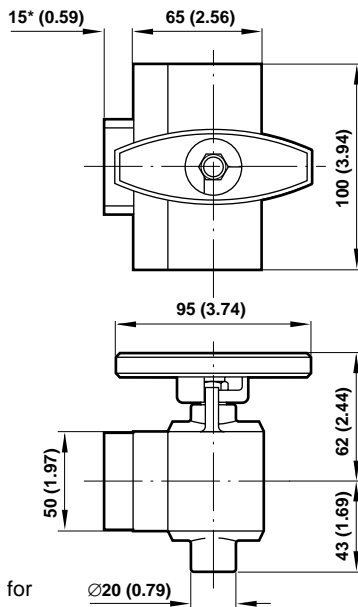
T 1 5 - ★ 0 0 - ★ 2 A ★

Port Size	Substitute
3/4"	6
1"	8
1 1/4"	A
1 1/2"	B

Threads	Substitute
PTF	A
ISO Rc taper	B
ISO G parallel	D

Ball Type	Substitute
Non exhaust	B
Exhaust	E

**Dimensions mm (inches)**



\* 20 mm (0.79") for G1 1/2 model.

**Service Kits**

Item	Part Number
Service kit	T15-800-100

Service kit includes thrust bearing, Teflon seats, stem seal, gland, stem nut, and necessary o-rings.

**Warning**

These products are intended for use in industrial compressed air systems only. Do not use these products where pressures and temperatures can exceed those listed under "Technical Data".

Before using these products with fluids other than those specified, for non-industrial applications, life-support systems, or other applications not within published specifications, consult NORGREN.

Through misuse, age, or malfunction, components used in fluid power systems can fail in various modes. The system designer is warned to consider the failure modes of all component parts used in fluid power systems and to provide adequate safeguards to prevent personal injury or damage to equipment in the event of such failure.

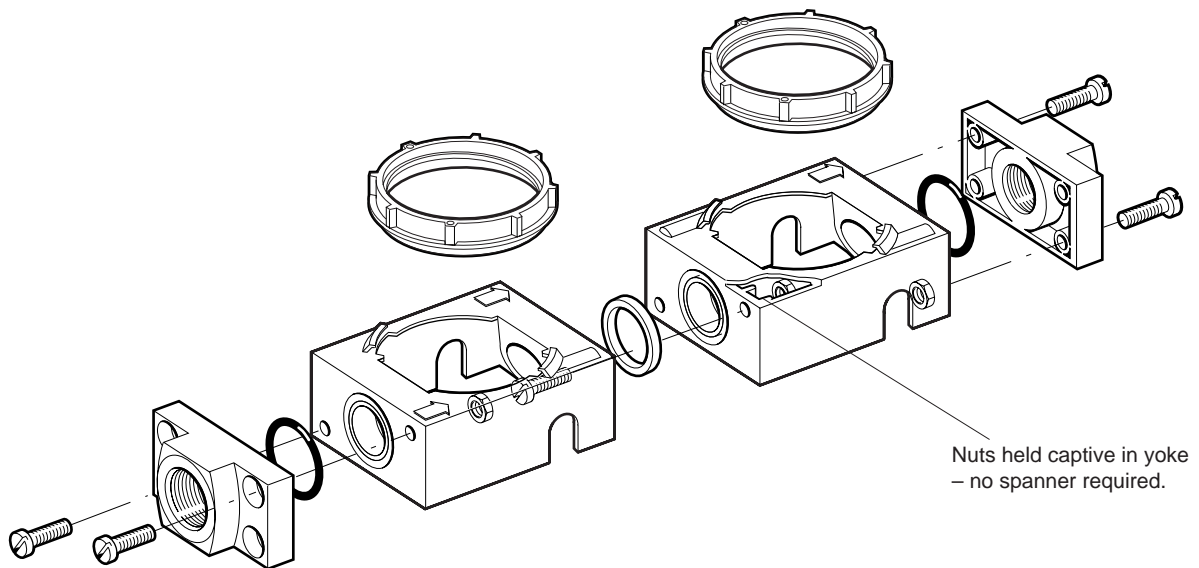
**System designers must provide a warning to end users in the system instructional manual if protection against a failure mode cannot be adequately provided.**

System designers and end users are cautioned to review specific warnings found in instruction sheets packed and shipped with these products.

Water vapor will pass through these units and will condense into liquid if air temperature drops in the downstream system. Install an air dryer if water condensation could have a detrimental effect on the application.

**Olympian Series 15  
System Accessories**

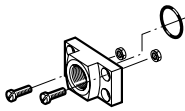
- **Olympian Series 15 System Components**
- **Bracket and Connector Kits**
- **Tamper Resistant Kits**
- **Lubricator Fill Devices**
- **Porting Block**
- **Silencers**





# OLYMPIAN SERIES 15 ACCESSORIES

## End Connector Kit



Note: Two kits are required per unidaptor. Each kit contains end connector, screws, nuts and o-ring.

### Port Size

G1/2	5524-58
G3/4	5524-55
G1	5524-52
G1 1/4	5523-52
G1 1/2	5523-93

Rc1/2	5524-57
Rc3/4	5524-54
Rc1	5524-51
Rc1 1/4	5523-51
Rc1 1/2	5523-94

N.P.T. 1/2	5524-56
N.P.T. 3/4	5524-53
N.P.T. 1	5524-50
N.P.T. 1 1/4	5523-50
N.P.T. 1 1/2	5523-95

## Yoke Connecting Kit

Comprising seal, screws and nuts.

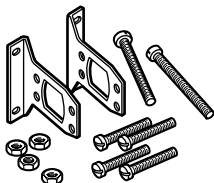


Part Number 18-026-987

## Mounting Bracket

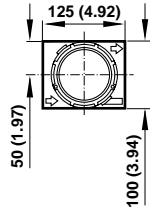
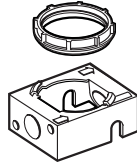
Brackets slip over end connectors and are bolted to Unidaptor with nuts and screws provided.

Note: Each kit contains 6 screws (2 x 80 mm and 4 x 35 mm) and 4 nuts.



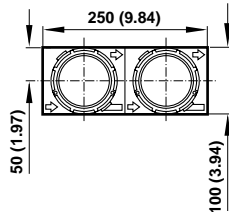
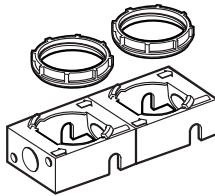
Part Number  
G1/2, G3/4, G1 18-001-979  
G1 1/4 18-001-978

## Single Yoke



Part Number: 5519-98

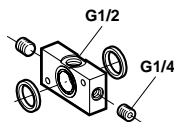
## Double Yoke



Part Number: 5519-51

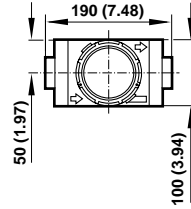
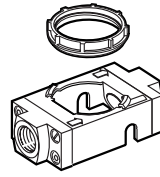
## Porting Block

A top take-off porting block may be fitted to end connectors or shut-off valves. This can serve several purposes but is particularly convenient if instrument or other air is required to be piped away for auxiliary use prior to lubricator. A porting block adds 29 mm (1.14") to the overall length of a combination unit.



Part Number 18-026-986

## Single Unidaptor



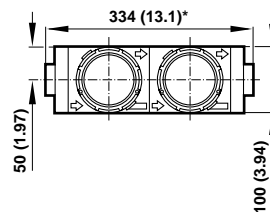
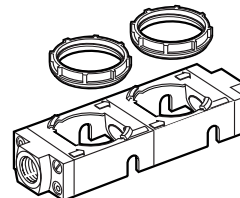
### Port Size

G1/2	Y15-400-10DD
G3/4	Y15-600-10DD
G1	Y15-800-10DD
G1 1/4	Y15-A00-10DD
G1 1/2	Y15-B00-10DD

Rc1/2	Y15-400-10BB
Rc3/4	Y15-600-10BB
Rc1	Y15-800-10BB
Rc1 1/4	Y15-A00-10BB
Rc1 1/2	Y15-B00-10BB

N.P.T. 1/2	Y15-400-10AA
N.P.T. 3/4	Y15-600-10AA
N.P.T. 1	Y15-800-10AA
N.P.T. 1 1/4	Y15-A00-10AA
N.P.T. 1 1/2	Y15-B00-10AA

## Double Unidaptor



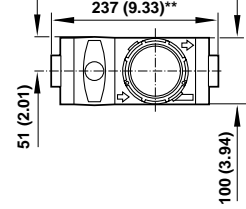
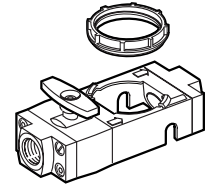
### Port Size

G1/2	Y15-400-20DD
G3/4	Y15-600-20DD
G1	Y15-800-20DD
G1 1/4	Y15-A00-20DD
G1 1/2	Y15-B00-20DD

Rc1/2	Y15-400-20BB
Rc3/4	Y15-600-20BB
Rc1	Y15-800-20BB
Rc1 1/4	Y15-A00-20BB
Rc1 1/2	Y15-B00-20BB

N.P.T. 1/2	Y15-400-20AA
N.P.T. 3/4	Y15-600-20AA
N.P.T. 1	Y15-800-20AA
N.P.T. 1 1/4	Y15-A00-20AA
N.P.T. 1 1/2	Y15-B00-20AA

## Single Shut-off Unidaptor



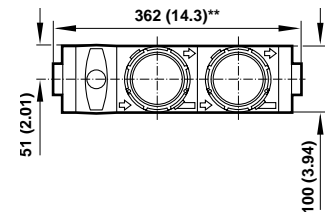
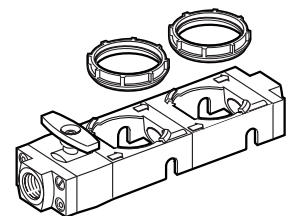
### Port Size

G1/2	Y15-400-1EDD
G3/4	Y15-600-1EDD
G1	Y15-800-1EDD
G1 1/4	Y15-A00-1EDD
G1 1/2	Y15-B00-1EDD

Rc1/2	Y15-400-1EBB
Rc3/4	Y15-600-1EBB
Rc1	Y15-800-1EBB
Rc1 1/4	Y15-A00-1EBB
Rc1 1/2	Y15-B00-1EBB

N.P.T. 1/2	Y15-400-1EAA
N.P.T. 3/4	Y15-600-1EAA
N.P.T. 1	Y15-800-1EAA
N.P.T. 1 1/4	Y15-A00-1EAA
N.P.T. 1 1/2	Y15-B00-1EAA

## Double Shut-off Unidaptor



### Port Size

G1/2	Y15-400-2EDD
G3/4	Y15-600-2EDD
G1	Y15-800-2EDD
G1 1/4	Y15-A00-2EDD
G1 1/2	Y15-B00-2EDD

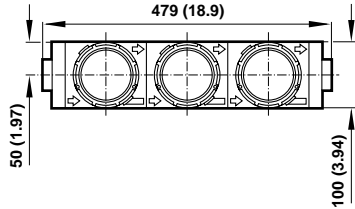
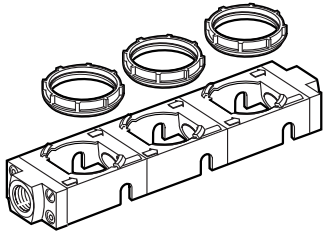
Rc1/2	Y15-400-2EBB
Rc3/4	Y15-600-2EBB
Rc1	Y15-800-2EBB
Rc1 1/4	Y15-A00-2EBB
Rc1 1/2	Y15-B00-2EBB

N.P.T. 1/2	Y15-400-2EAA
N.P.T. 3/4	Y15-600-2EAA
N.P.T. 1	Y15-800-2EAA
N.P.T. 1 1/4	Y15-A00-2EAA
N.P.T. 1 1/2	Y15-B00-2EAA





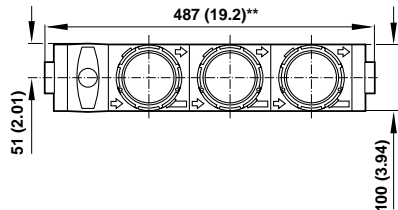
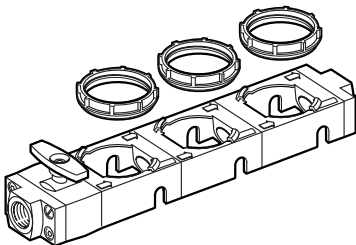
**Treble Unidaptor**



**Port Size**

G1/2	Y15-400-30DD
G3/4	Y15-600-30DD
G1	Y15-800-30DD
G1 1/4	Y15-A00-30DD
G1 1/2	Y15-B00-30DD
Rc1/2	Y15-400-30BB
Rc3/4	Y15-600-30BB
Rc1	Y15-800-30BB
Rc1 1/4	Y15-A00-30BB
Rc1 1/2	Y15-B00-30BB
N.P.T. 1/2	Y15-400-30AA
N.P.T. 3/4	Y15-600-30AA
N.P.T. 1	Y15-800-30AA
N.P.T. 1 1/4	Y15-A00-30AA
N.P.T. 1 1/2	Y15-B00-30AA

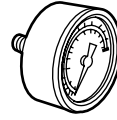
**Treble Shut-off Unidaptor**



**Port Size**

G1/2	Y15-400-3EDD
G3/4	Y15-600-3EDD
G1	Y15-800-3EDD
G1 1/4	Y15-A00-3EDD
G1 1/2	Y15-B00-3EDD
Rc1/2	Y15-400-3EBB
Rc3/4	Y15-600-3EBB
Rc1	Y15-800-3EBB
Rc1 1/4	Y15-A00-3EBB
Rc1 1/2	Y15-B00-3EBB
N.P.T. 1/2	Y15-400-3EAA
N.P.T. 3/4	Y15-600-3EAA
N.P.T. 1	Y15-800-3EAA
N.P.T. 1 1/4	Y15-A00-3EAA
N.P.T. 1 1/2	Y15-B00-3EAA

**Pressure Gauges**



Ø 50 mm Pressure Gauge

**R 1/8 Connection**

4 bar (60 psig)	18-013-011
10 bar (150 psig)	18-013-013
25 bar (360 psig)	18-013-014

**1/8 PTF Connection**

4 bar (60 psig)	18-013-202
10 bar (150 psig)	18-013-204
25 bar (360 psig)	18-013-206

**Quick Fill Nipple**



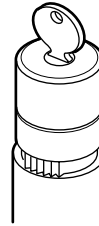
Part Number 18-011-021

**Liquid Level Switch**



Part Number  
8 litre: 18-007-975  
20 litre: 18-007-974

**Key Lock Bonnet**



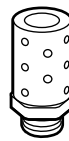
Part Number 5803-98

**Remote Fill Kit**



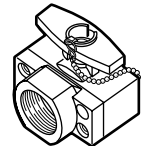
Part Number 18-027-980

**Silencer**



Part Number MB008B (R1)

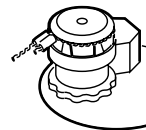
**Shut-off Valve**



Port Size 3 Port/2 Position

G3/4	T15-600-E2AD
G1	T15-800-E2AD
G1 1/4	T15-A00-E2AD
G1 1/2	T15-B00-E2AD

**Tamper Resistant Wire**



Part Number 2117-01  
(pack of 10)

Rc3/4	T15-600-E2AD
Rc1	T15-800-E2AD
Rc1 1/4	T15-A00-E2AD
Rc1 1/2	T15-B00-E2AD

N.P.T. 3/4	T15-600-E2AD
N.P.T. 1	T15-800-E2AD
N.P.T. 1 1/4	T15-A00-E2AD
N.P.T. 1 1/2	T15-B00-E2AD

For optional 2 Port/2 Position (no exhaust) models substitute 'B' for 'E' at the 7th digit.  
e.g. T15-600-B2AD.



### Warning

These products are intended for use in industrial compressed air systems only. Do not use these products where pressures and temperatures can exceed those listed under **'Technical Data'**.

Before using these products with fluids other than those specified, for non-industrial applications, life-support systems, or other applications not within published specifications, consult NORGREN.

Through misuse, age, or malfunction, components used in fluid power systems can fail in various modes. The system designer is warned to consider the failure modes of all component parts used in fluid power systems and to provide adequate safeguards to prevent personal injury or damage to equipment in the event of such failure.

**System designers must provide a warning to end users in the system instructional manual if protection against a failure mode cannot be adequately provided.**

System designers and end users are cautioned to review specific warnings found in instruction sheets packed and shipped with these products.

Water vapor will pass through these units and will condense into liquid if air temperature drops in the downstream system. Install an air dryer if water condensation could have a detrimental effect on the application.

**Olympian  
Coalescing Exhaust Silencers  
3/4", 1", 1 1/4", 1 1/2" Port Sizes**

- Olympian plug in design
- Effectively reduce noise emission of multi valve and cylinder systems
- Remove oil mist and sub-micron particles from exhaust air
- Single or double units for high flow rates
- Flow in either direction
- Helps to meet noise at work directive

**Technical Data**

Fluid: Compressed air

Operating temperature\*:

Metal bowl: -20° to +50°C (0° to +122°F)

\* Air supply must be dry enough to avoid ice formation at temperatures below +2°C (+35°F).

Materials:

Body: Aluminium

Yoke: Aluminium

Cage: Aluminium

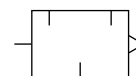
Bowl: Polypropylene

Element: Composite materials

Elastomers: Synthetic rubber

**Ordering Information**

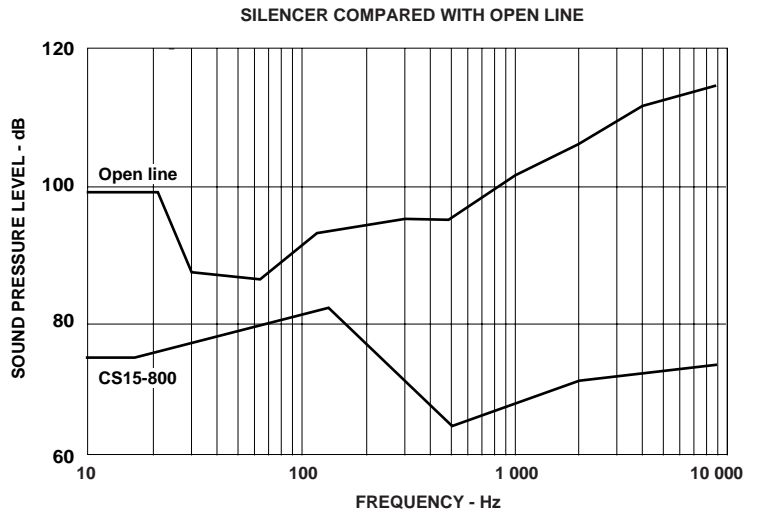
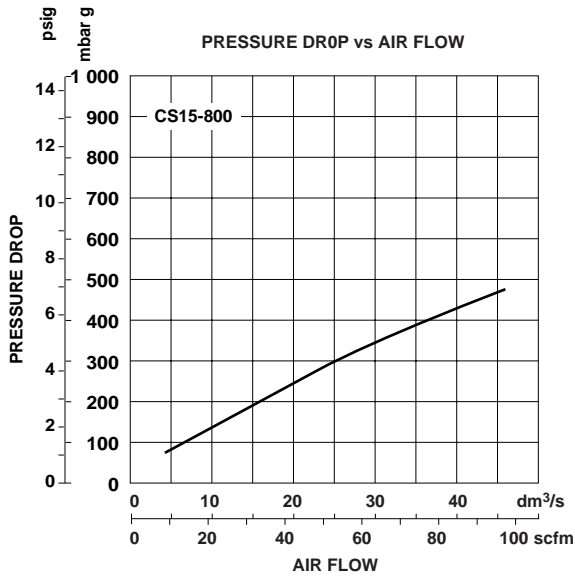
See *Ordering Information* on the following pages.

**ISO Symbol**

Automatic Drain



### Typical Performance Characteristics

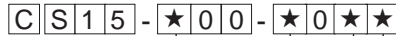


### Ordering Information. Models listed include ISO G threads.

Port Size	Single	Weight kg (lb)	Double	Weight kg (lb)
G3/4	CS15-600-10DD	2,34 (5.20)	CS15-600-20DD	4,26 (9.47)
G1	CS15-800-10DD	2,29 (5.09)	CS15-800-20DD	4,21 (9.36)
G1 1/4	—		CS15-A00-20DD	4,27 (9.49)
G1 1/2	—		CS15-B00-20DD	4,28 (9.51)

For replacement silencer without yoke substitute '0' at the 5th, 8th, 10th and 11th digits eg:CS15-000-0000.

### Alternative Models

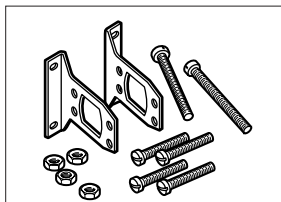


Port Size	Substitute
3/4"	6
1"	8
1 1/4"	A
1 1/2"	B

Option	Substitute
Single yoke	1
Double yoke	2

Port Option	Substitute
PTF threaded	A A
ISO G threaded	D D
ISO Rc threaded	B B
One main outlet plugged (PTF)	A X
One main outlet plugged (ISO G)	D X
One main outlet plugged (ISO Rc)	B X

### Accessories

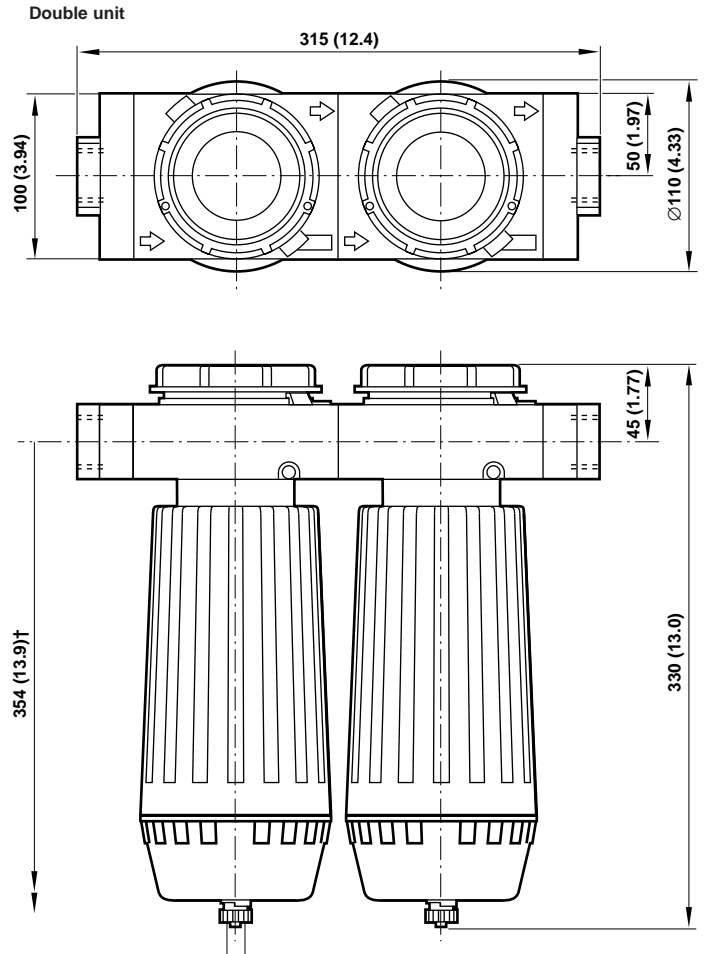
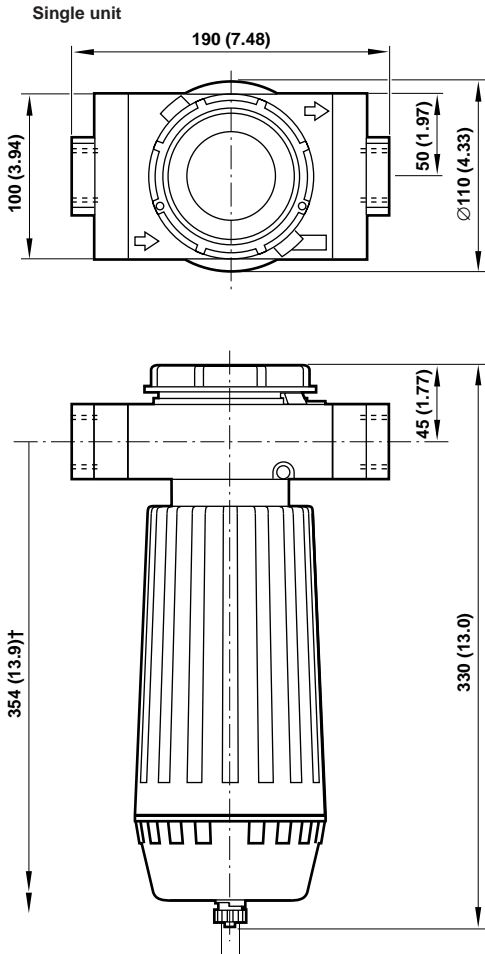


Wall Mounting Bracket

G3/4	18-001-979
G1	18-001-979
G1 1/4	18-001-978
G1 1/2	N/A



**Dimensions mm (inches)**



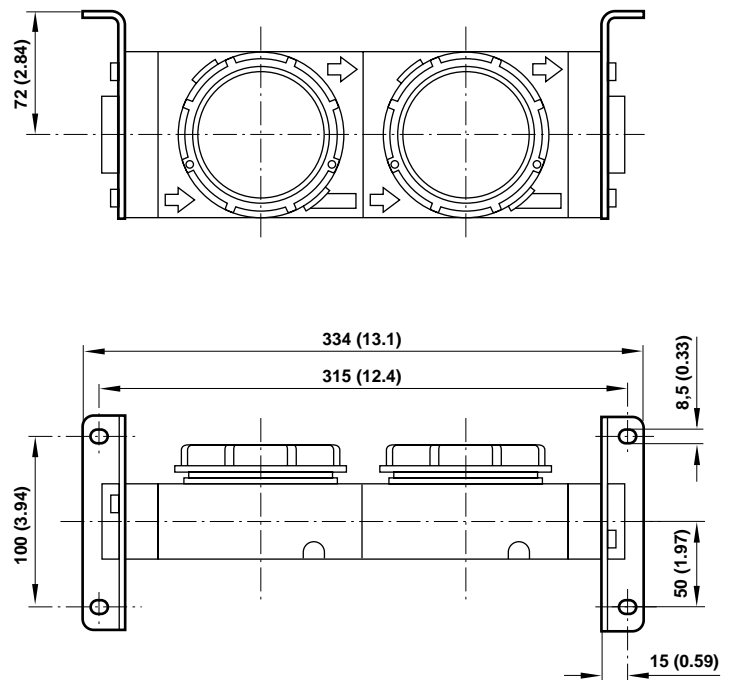
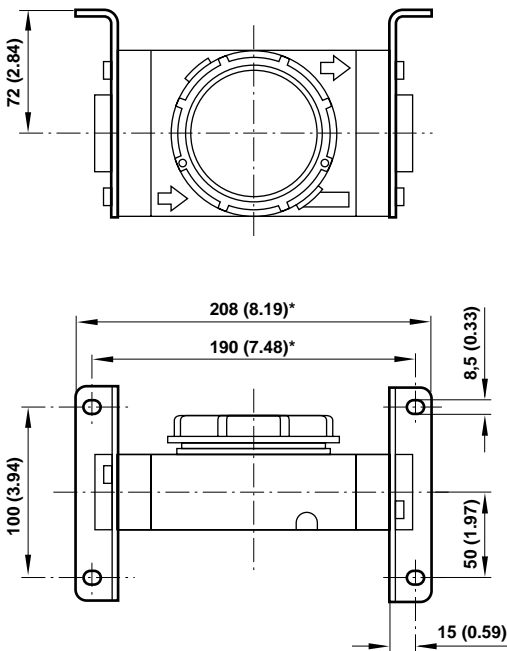
† Minimum clearance required to remove bowl.  
 \* 200 mm (7.87) for 1 1/4" and 1 1/2" models

**Bracket Mounting**

Use 4 mm (5/32") screws to mount bracket to wall.

**Bracket Kit Reference**

Item	Type	Part Number
Wall Bracket	3/4" model	18-001-979
	1" model	18-001-979
	1 1/4" model	18-001-978
	1 1/2" model	N/A





### Service Kits

Item	Part Number
Service kit	CS15RK
Replacement elements	5576-97

Service kit includes: bowl, drain plug and drain retainer.

### Warning

These products are intended for use in industrial compressed air systems only. Do not use these products where pressures and temperatures can exceed those listed under **Technical Data**.

Before using these products with fluids other than those specified, for non-industrial applications, life-support systems, or other applications not within published specifications, consult NORGREN.

Through misuse, age, or malfunction, components used in fluid power systems can fail in various modes. The system designer is warned to consider the failure modes of all component parts used in fluid power systems and to provide adequate safeguards to prevent personal injury or damage to equipment in the event of such failure.

**System designers must provide a warning to end users in the system instructional manual if protection against a failure mode cannot be adequately provided.**

System designers and end users are cautioned to review specific warnings found in instruction sheets packed and shipped with these products.

Water vapor will pass through these units and will condense into liquid if air temperature drops in the downstream system. Install an air dryer if water condensation could have a detrimental effect on the application.