

## IGBT MODULE ( L series)

### ■ Features

- High Speed Switching
- Low Saturation Voltage
- Voltage Drive

### ■ Applications

- Inverter for Motor Drive
- AC and DC Servo Drive Amplifier
- Uninterruptible Power Supply
- Industrial Machines, such as Welding Machines

### ■ Maximum Ratings and Characteristics

#### ● Absolute Maximum Ratings

Items	Symbols	Ratings	Units
Collector-Emitter Voltage	$V_{CES}$	1200	V
Gate-Emitter Voltage	$V_{GES}$	$\pm 20$	V
Collector Current	Continuous	$I_C$	50
	1ms	$I_{C\ pulse}$	100
	Continuous	$-I_C$	50
	1ms	$-I_{C\ pulse}$	100
Max. Power Dissipation	$P_C$	400	W
Operating Temperature	$T_J$	+150	$^{\circ}C$
Storage Temperature	$T_{stg}$	-40 to +125	$^{\circ}C$
Net. Weight		510	g
Isolation Voltage	AC. 1min.	$V_{isol}$	2500
Screw Torque	Mounting *1	35	
	Terminals *2	17	kg*cm

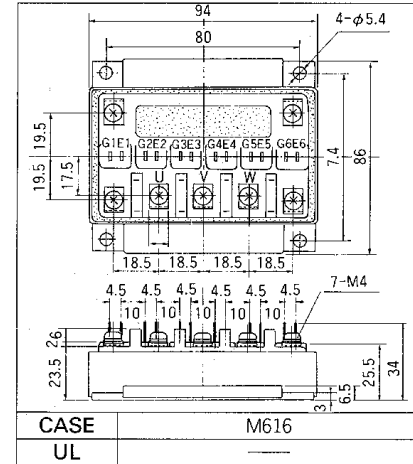
#### ● Electrical Characteristics (Tc=25°C)

Items	Symbols	Test Conditions	Min.	Typ.	Max.	Units
Zero Gate Voltage Collector Current	$I_{CES}$	$V_{GE}=0V\ V_{CE}=1200V\ T_c=25^{\circ}C$			1.0	mA
		$V_{GE}=0V\ V_{CE}=1200V\ T_c=125^{\circ}C$			-	mA
Gate-Emitter Leakage Current	$I_{GES}$	$V_{CE}=0V\ V_{GE}=\pm 20V$			100	nA
Gate-Emitter Threshold Voltage	$V_{GE(th)}$	$V_{CE}=20V\ I_C=50mA$	3.0		6.0	V
Collector-Emitter Saturation Voltage	$V_{CE(sat)}$	$V_{GE}=15V\ I_C=50A$			3.5	V
Input Capacitance	$C_{ies}$	$V_{GE}=0V$		9000		pF
Output Capacitance	$C_{oes}$	$V_{CE}=10V$		-		
Reverse Transfer Capacitance	$C_{res}$	$f=1MHz$		-		
Turn-on Time	$t_{on}$	$V_{CC}=600V$		0.5	0.8	$\mu s$
	$t_r$	$I_C=50A$		0.3	0.6	
Turn-off Time	$t_{off}$	$V_{GE}=\pm 15V$		0.8	1.5	
	$t_f$	$R_G=25\Omega$		0.3	0.5	
Diode Forward On-Voltage	$V_F$	$I_F=50A\ V_{GE}=0V$			2.5	V
Reverse Recovery Time	$t_{rr}$	$I_F=50A\ -di/dt=150A/\mu s\ V_{GE}=-10V$		200	350	ns

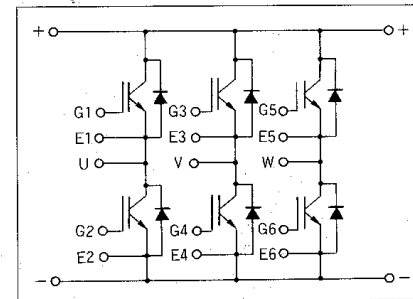
#### ● Thermal Characteristics

Items	Symbols	Test Conditions	Min.	Typ.	Max.	Units
Thermal Resistance	$R_{th(j-c)}$	IGBT			0.312	$^{\circ}C/W$
	$R_{th(j-e)}$	Diode			0.60	
	$R_{th(c-f)}$	With Thermal compound		0.05		

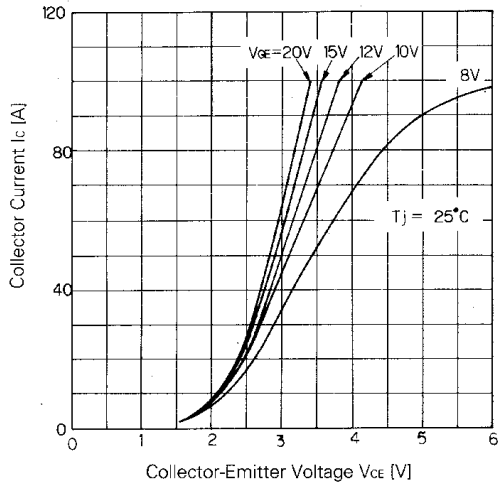
### ■ Outline Drawings



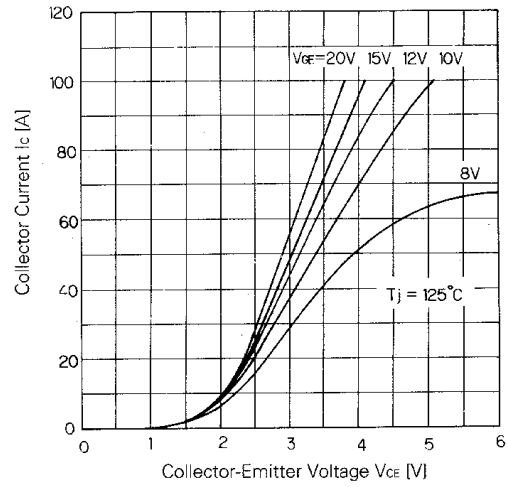
### ■ Equilavent Circuit Schematic



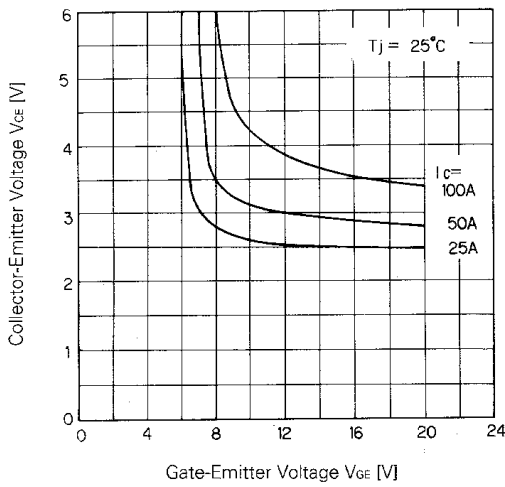
\*1 Recommendable Value 25 to 35kg\*cm (M5)  
\*2 Recommendable Value 13 to 17kg\*cm (M4)



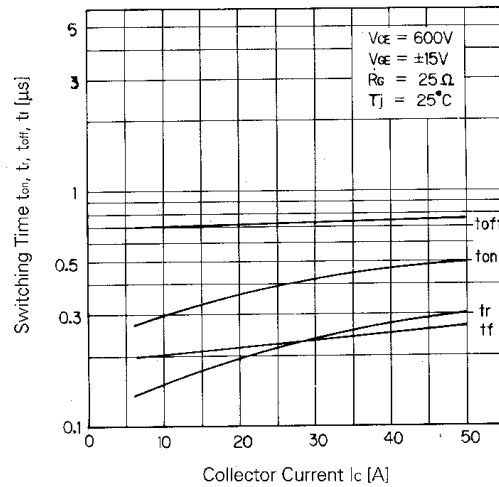
Collector Current vs. Collector-Emitter Voltage



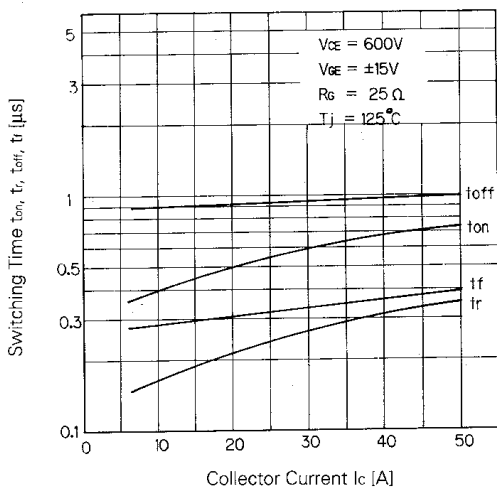
Collector Current vs. Collector-Emitter Voltage



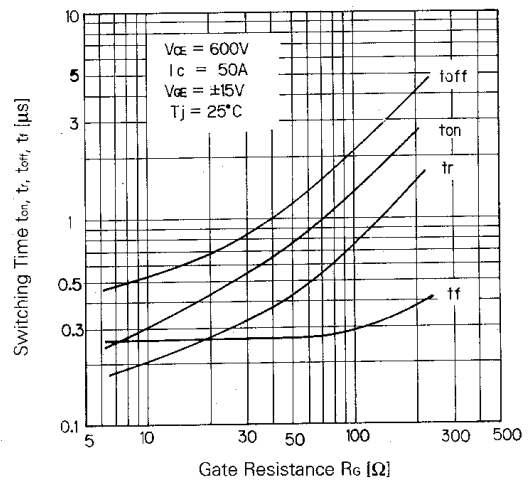
Collector-Emitter Voltage vs. Gate-Emitter Voltage



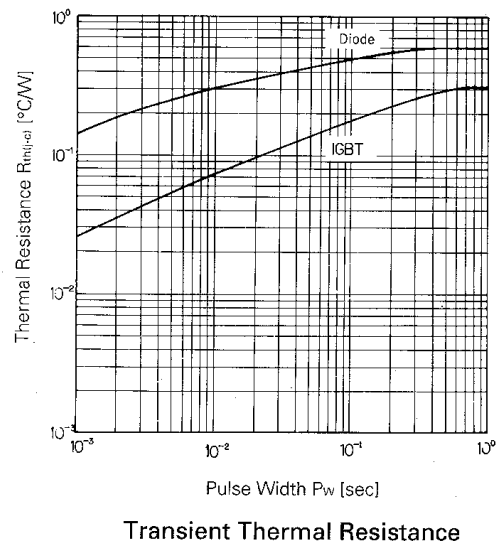
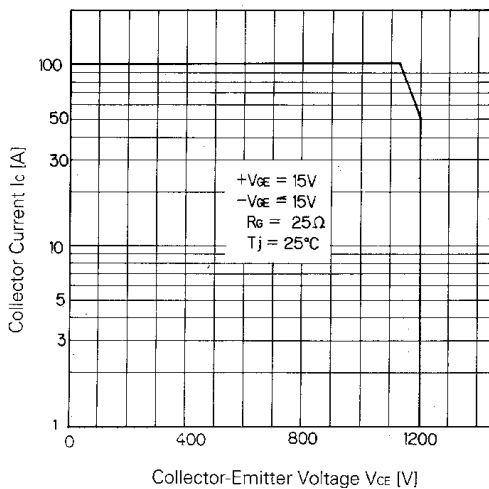
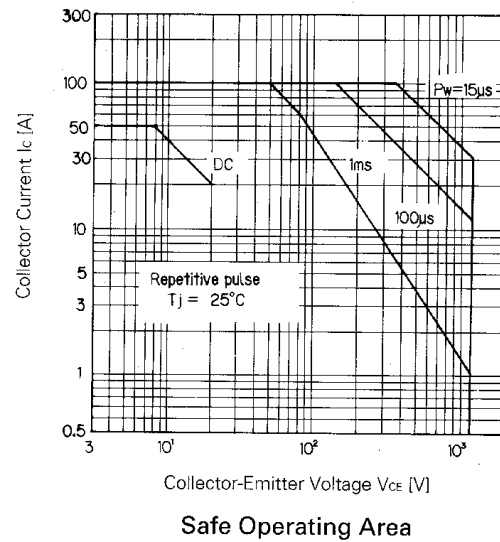
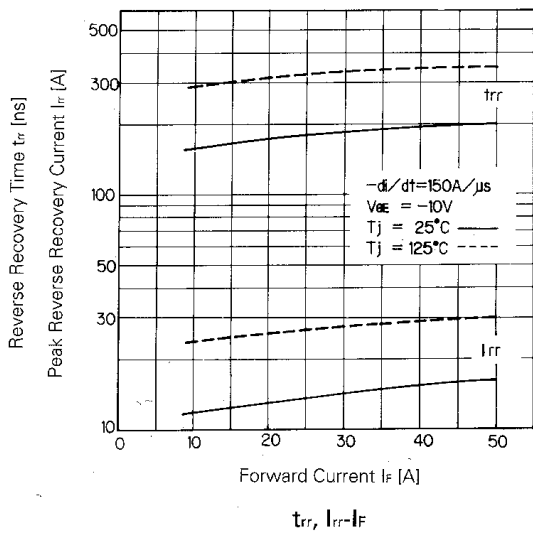
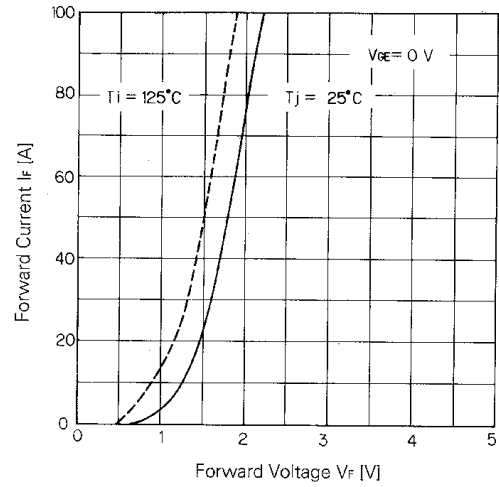
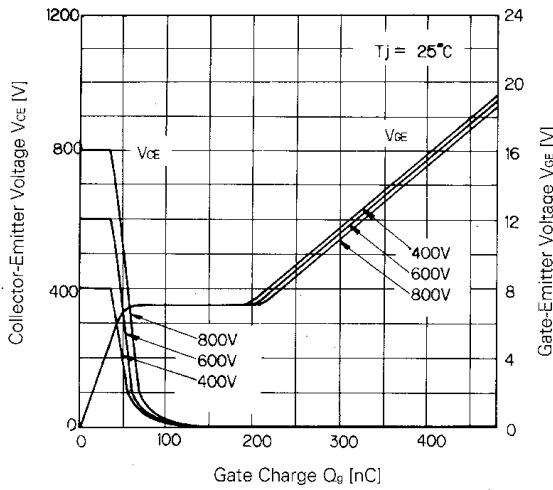
Switching Time



Switching Time



Switching Time-Gate Resistance



For more information, contact:

**Collmer Semiconductor, Inc.**

P.O. Box 702708

Dallas, TX 75370

972-733-1700

972-381-9991 Fax

<http://www.collmer.com>