

16-CHARACTER 2-LINE DOT MATRIX LCD CONTROLLER DRIVER

■ GENERAL DESCRIPTION

The NJU6420B is a 1 Chip Dot Matrix LCD controller driver for up to 16-character 2-line display.

It contains voltage converter, bleeder resistance, CR oscillator, microprocessor interface circuits, instruction decoder controller, character generator ROM/RAM and high voltage operation common and segment drivers.

The voltage converter and bleeder resistance generates about twofold voltage(10V or 6V) and bias voltage for LCD driving waveform internally from single power supply (5V or 3V).

Consequently, high-contrast display can be performed though the simple power supply circuits.

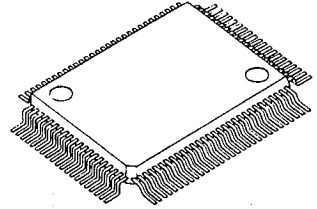
The resistance and capacitance for CR oscillation circuits are incorporated, therefore no external components for the oscillation circuits are required.

The microprocessor interface circuits which operate by 2MHz frequency, can be connected directly to 4/8bit microprocessor.

The character generator consists of 9,600bits ROM and 64 bytes RAM. The standard version ROM is coded with 240 characters including capital and small letter fonts and some of Japanese fonts.

The high voltage operation 32-common and 40-segment drivers operate up to 13.5V or 12V, and drive up to 16-character 2-line LCD panels which divided four common electrode blocks.

■ PACKAGE OUTLINE



NJU6420F

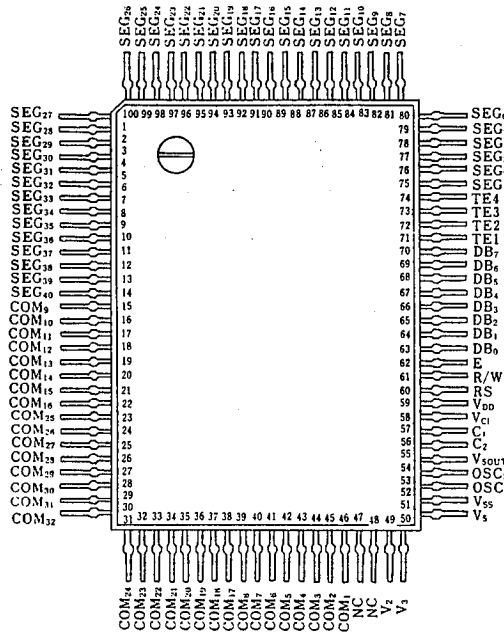
■ FEATURES

- 16-character 2-line Dot Matrix LCD Controller Driver
- 4/8 Bit Microprocessor Direct Interface
- Display Data RAM - 80 x 8 bits : Maximum 16-character 2-line Display
- Character Generator ROM - 9,600 bits : 240 Characters for 5 x 7 Dots
- Character Generator RAM - 64 x 8 bits : 8 Patterns(5 x 7 Dots)
- Microprocessor can access to Display Data RAM and Character Generator RAM
- High Voltage LCD Driver : 32-common / 40-segment
- Programmable Duty Ratio : 1/16 Duty for 5x 7 Dots + Cursor, 1 Line
1/32 Duty for 5x 7 Dots + Cursor, 2 Lines
- Number of Maximum Display Characters:

Display Line	Duty	Font	Max. Disp. Characters
1 Line	1/16 duty	5 x 7 dots + cursor	16-character 1-line
2 Lines	1/32 duty	5 x 7 dots + cursor	16-character 2-line

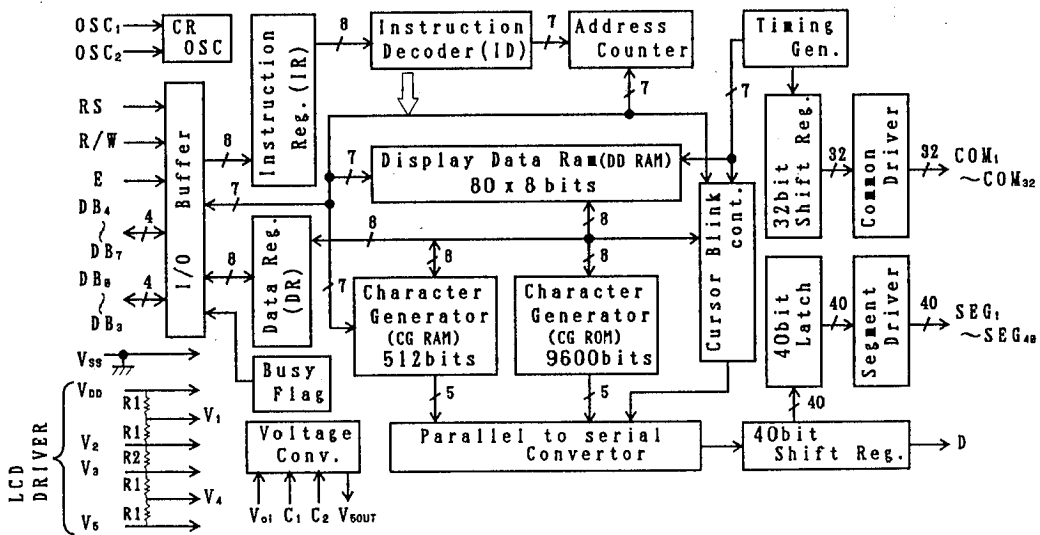
- Useful Instruction Set : Clear Display, Return Home, Display ON/OFF Cont, Cursor ON/OFF Cont, Display Blink, Cursor Shift, Character Shift
- Power On Initialize Circuit On-chip
- Bleeder Resistance On-chip
- Voltage Converter On-chip
- Oscillation Circuit On-chip
- Low Power Consumption
- Operating Voltage --- 5 V / 3 V
- Package Outline --- Chip / QFP100 / TCP
- C-MOS Technology

■ PIN CONFIGURATION



5

■ BLOCK DIAGRAM



■ TERMINAL DESCRIPTION

NO.	SYMBOL	F U N C T I O N
59	V _{DD}	Power Source (+5V / +3V)
52	V _{SS}	Power Source (0V)
53 54	OSC ₁ OSC ₂	Oscillation Frequency Adjust Terminals. Normally Open. (Oscillation C and R are incorporated, Osc Freq.=290kHz) For external clock operation, the clock should be input on OSC ₁ .
60	RS	Register selection signal input(Pull-up resistance On-chip) "0" : Instruction Register (Writing) Busy Flag, Address Counter (Reading) "1" : Data Register (Writing/Reading)
61	R/W	Read/Write selection signal input(Pull-up Resistance On-chip) "0" : Write , "1" : Read
62	E	Read/Write activation signal input
67~70	DB ₄ ~DB ₇	3-state Data Bus(Upper) to transfer the data between MPU and NJU6420B. DB ₇ is also used for the Busy Flag reading.
63~66	DB ₀ ~DB ₃	3-state Data Bus(Lower) to transfer the data between MPU and NJU6420B. These bus are not used in the 4bit operation.
15~22 23~30 31~38 39~46	COM ₉ ~COM ₁₆ COM ₂₅ ~COM ₃₂ COM ₂₄ ~COM ₁₇ COM ₈ ~COM ₁	LCD Common driving signal No use terminals output no-active signal, or COM ₁₇ ~COM ₃₂ output no-active signal in the 1/16 duty operation.
75~100 1~14	SEG ₁ ~SEG ₂₆ SEG ₂₇ ~SEG ₄₀	LCD Segment driving signal
57 56	C ₁ C ₂	Capacitor for Voltage Doubler Connecting Terminal (+) Capacitor for Voltage Doubler Connecting Terminal (-)
58	V _{c1}	Input Terminal for Voltage Doubler (Normally V _{c1} = V _{DD})
55	V _{5OUT}	Voltage Doubler Output Terminal
49,50,51	V ₂ , V ₃ , V ₅	LCD Driving Voltage Adjust Terminals
71~74	TE1~TE4	Maker Testing Terminals (Normally Open)
47,48	NC	Non Connection

■ FUNCTIONAL DESCRIPTION

(1) Description for each blocks

(1-1) Register

The NJU6420B incorporates two 8-bit registers, an Instruction Register(IR) and a Data Register(DR).

The Register(IR) stores instruction codes such as "Clear Display" and "Return Home", and address data for Display Data RAM(DD RAM) and Character Generator RAM(CG RAM).

The MPU can write the instruction code and address data to the Register(IR), but it cannot read out from the Register(IR).

The Register(DR) is a temporary stored register, the data stored in the Register(DR) is written into the DD RAM or CG RAM and read out from the DD RAM or CG RAM.

The data in the Register(DR) written by the MPU is transferred automatically to the DD RAM or CG RAM by internal operation.

When the address data for the DD RAM or CG RAM is written into the Register(IR), the addressed data in the DD RAM or CG RAM is transferred to the Register(DR). By the MPU read out the data in the Register(DR), the data transmitting process is performed completely.

After reading the data in the Register(DR) by the MPU, the next address data in the DD RAM or CG RAM is transferred automatically to the Register(DR) to provide for the next MPU reading.

These two registers are selected by the selection signal RS as shown below.

Table 1. shows register operation controlled by RS and R/W signals.

Table 1. Register Operation

RS	R/W	Selected Register	Operation
0	0	IR	Write
0	1		Read busy flag(DB ₇) and address counter(DB ₀ ~DB ₆)
1	0	DR	Write (Register(DR) to DD RAM or CG RAM)
1	1		Read (DD RAM or CG RAM to Register(DR))

(1-2) Busy Flag (BF)

When the internal circuits are in the operation mode, the busy flag (BF) is "1", and any instruction reading is inhibited.

The busy flag (BF) is output at DB₇ when RS="0" and R/W="1" as shown in Table 1.

The next instruction should be written after the busy flag(BF) goes to "0".

(1-3) Address Counter (AC)

The address counter(AC) addressing the DD RAM and CG RAM.

When the address setting instruction is written into the Register(IR), the address information is transferred from Register(IR) to the Counter(AC). The selection of either the DD RAM or CG RAM is also determined by this instruction.

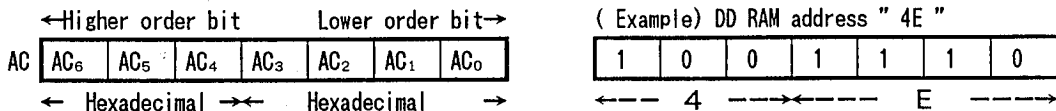
After writing (or reading) the display data to (or from) the DD RAM or CG RAM, the Counter (AC) increments (or decrements) automatically.

The address data in the Counter(AC) is output from DB₆~DB₀ when RS="0" and R/W="1" as shown in Table 1.

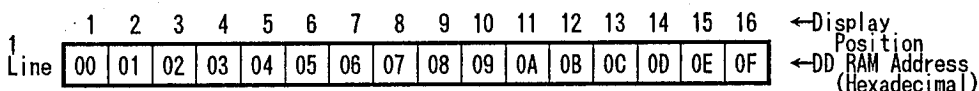
(1-4) Display Data RAM (DD RAM)

The display data RAM (DD RAM) consists of 80 x 8 bits stores up to 80-character display data represented in 8-bit code.

The unused display data memory area in the DD RAM can be used as a general data memory area. The DD RAM address data set in the address counter(AC) is represented in Hexadecimal.

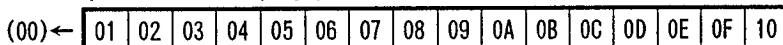

(1-4-1) 16-character 1-line Display (Function set code N=0)

The relation between DD RAM address and display position on the LCD is shown below.

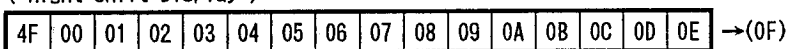


When the display shift is performed, the DD RAM address changes as follows:

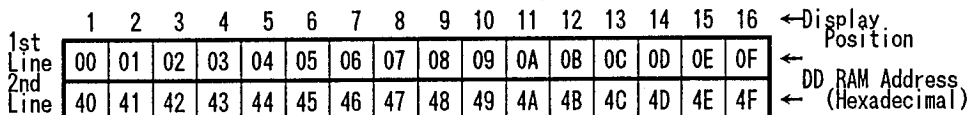
(Left Shift Display)



(Right Shift Display)


(1-4-2) 16-character 2-line Display (Function set code N=1)

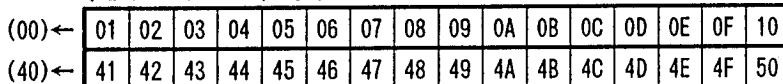
The relation between DD RAM address and display position on the LCD is shown below.



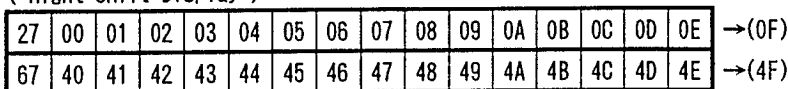
Note : In the 2-line display mode, the 1st and 2nd line address are defined as (00)_H to (27)_H and (40)_H to (67)_H. Please note that the end of 1st line address and the beginning of 2nd line address are not consecutive.

When the display shift is performed, the DD RAM address changes as follows:

(Left Shift Display)



(Right Shift Display)



(1-5) Character Generator ROM (CG ROM)

The Character Generator ROM (CG ROM) generates 5 x 7 dots character pattern represented in 8-bit character codes.

The storage capacity is up to 240 kinds of 5 x 7 dots character pattern.

The correspondence between character code and standard character pattern of NJU6420B is shown in Table 2-1 to 2-3.

User-defined character patterns (Custom Font) are also available by mask option.

Table 2-1. CG ROM Character Pattern (ROM version -01)

		Upper 4 bit (Hexadecimal)															
		0	1	2	3	4	5	6	7	8	9	A	B	C	D	E	F
Lower 4 bit (Hexadecimal)	0 CG RAM (01)			0	a	P	`	P				-	9	E	o	p	
	1 (02)		!	1	A	Q	a	a				=	7	7	4	ä	q
	2 (03)		"	2	B	R	b	r				"	4	w	x	æ	ø
	3 (04)		#	3	C	S	c	s				1	9	T	E	e	ø
	4 (05)		\$	4	D	T	t	t				\	I	t	h	w	o
	5 (06)		%	5	E	U	e	u				.	*	*	1	o	ü
	6 (07)		&	6	F	V	v	v				7	0	2	3	p	z
	7 (08)		'	7	G	W	w	w				7	7	7	7	a	n
	8 (01)		(8	H	X	h	x				4	0	*	U	r	x
	9 (02))	9	I	Y	i	y				6	7	7	U	'	y
	A (03)		*	#	J	Z	j	z				±	0	1	v	j	7
	B (04)		+	:	K	[k	[*	7	E	0	'	7
	C (05)		.	<	L]	l]				6	9	7	7	0	n
	D (06)		-	=	M	^	m	^				±	7	^	^	t	÷
	E (07)		.	>	N	_	n	_				3	E	*	'	n	
	F (08)		/	?	O	~	o	~				6	7	7	"	o	■

5

Table 2-2. CG ROM Character Pattern (ROM version -02)

		Upper 4 bit (Hexadecimal)															
		0	1	2	3	4	5	6	7	8	9	A	B	C	D	E	F
Lower 4 bit (Hexadecimal)	0	CG RAM (01)	ア		カ	キ	ク	ケ	コ								
	1	(02)	イ	!	1	A	a	2	3	4	5	6	7	8	9	0	1
	2	(03)	あ	"	2	B	b	3	4	5	6	7	8	9	0	1	2
	3	(04)	い	#	3	C	c	4	5	6	7	8	9	0	1	2	3
	4	(05)	お	\$	4	D	d	5	6	7	8	9	0	1	2	3	4
	5	(06)	0	%	5	E	e	6	7	8	9	0	1	2	3	4	5
	6	(07)	ア	&	6	F	f	7	8	9	0	1	2	3	4	5	6
	7	(08)	ア	'	7	G	g	8	9	0	1	2	3	4	5	6	7
	8	(01)	ア	(8	H	h	9	0	1	2	3	4	5	6	7	8
	9	(02)	0)	9	I	i	0	1	2	3	4	5	6	7	8	9
	A	(03)	0	*	#	J	j	1	2	3	4	5	6	7	8	9	0
	B	(04)	ア	+	#	K	k	()	*	#	0	1	2	3	4	5
	C	(05)	ア	,	<	L	l	!	"	#	\$	%	0	1	2	3	4
	D	(06)	い	-	=	M	m)	!	"	#	\$	%	0	1	2	3
	E	(07)	0	.	>	N	n	+	ア	キ	ク	ケ	コ	カ	キ	ク	ケ
	F	(08)	0	/	?	O	o	+	ア	キ	ク	ケ	コ	カ	キ	ク	ケ

Table 2-3. CG ROM Character Pattern (ROM version -03)

		Upper 4 bit (Hexadecimal)															
		0	1	2	3	4	5	6	7	8	9	A	B	C	D	E	F
Lower 4 bit (Hexadecimal)	0	CG RAM (01)	±		0	0P	'	#	g	e	é	.	r	R	B	t	
	1	(02)	≡	!	1	A0	a	9	0	a	i	"	J	+	y	0	
	2	(03)	7	"	2	B	R	b	r	e	R	e	'	o	S	S	y
	3	(04)	^	#	3	C	S	c	s	é	é	0	'	P	W	e	w
	4	(05)	^	\$	4	D	T	d	t	é	é	0	'	4	r	Z	w
	5	(06)	^	%	5	E	U	e	u	é	é	é	'	t	4	n	W
	6	(07)	^	&	6	F	V	f	v	é	0	#	'	u	↓	B	#
	7	(08)	^	'	7	G	U	g	w	S	0	R	X	'	+	A	U
	8	(01)	^	(8	H	X	h	x	é	g	'	÷	+	Z	K	#
	9	(02)	^)	9	I	Y	i	y	é	0	:	△	r	T	X	+
	A	(03)	^	*		J	Z	j	z	é	0	2	7	Z	U	P	
	B	(04)	^	+		K	C	k	c	i	R	é	*	L	r	v	+
	C	(05)	^	,		L	\	l	\	i	R	é	*	U	é	2	0
	D	(06)	^	-		M	I	m	i	é	é	#	'	W	π	≡	
	E	(07)	^	.		N	^	n	^	A	0	P	r	0	0	0	0
	F	(08)	^	/		0	_	o	△	A	0	é	'	0	o	o	0

5

(1-6) Character Generator RAM (CG RAM)

The character generator RAM (CG RAM) can store any kind of character pattern in 5 x 7 dots written by the user program to display user's original character pattern. The CG RAM can store 8 kinds of characters in 5 x 7 dots mode.

To display user's original character pattern stored in the CG RAM, the address data (00)_H - (07)_H or (08)_H - (0F)_H should be written to the DD RAM as shown in Table 2-1 to 2-3.

Table 3. show the correspondence among the character pattern, CG RAM address and Data. Unused memory area of the CG RAM can also be used as the general data memory area.

Table 3. Correspondence of CG RAM address, DD RAM character code and CG RAM character pattern(5 x 7 dots).

Character Code (DD RAM Data)		CG RAM Address		Character Pattern (CG RAM Data)		
7 6 5 4 3 2 1 0		5 4 3 2 1 0		7 6 5 4 3 2 1 0		
Upperbit Lowerbit		Upper Lower		Upperbit Lowerbit		
0 0 0 0 * 0 0 0		0 0 0	0 0 0	***	0 0 0 0	Character Pattern Example (1)
			0 0 1	↑	0 0 0 1	
			0 1 0		0 0 0 1	
			0 1 1		0 1 0 0	
			1 0 0		0 1 0 0	
			1 0 1		0 0 0 0	
			1 1 0		0 0 0 0	
			1 1 1	↓	0 0 0 0	
0 0 0 0 * 0 0 1		0 0 1	0 0 0	***	0 0 0 0	Character Pattern Example (2)
			0 0 1	↑	0 1 0 0	
			0 1 0		0 1 0 0	
			0 1 1		0 0 1 0 0	
			1 0 0		0 0 1 0 0	
			1 0 1		0 0 0 0 0	
			1 1 0		0 0 0 0 0	
			1 1 1	↓	0 0 0 0 0	
0 0 0 0 * 1 1 1		1 1 1	0 1 1	***		* : Don't Care
			1 0 0	↑		
			1 0 1			
			1 1 0			
1 1 1	↓	***				

- Notes :
1. Character code bit 0 to 2 correspond to the CG RAM add. 3 to 5(3bits:8 patterns).
 2. CG RAM address 0 to 2 designate character pattern line position. The 8th line is the cursor position and the display is performed by logical OR with cursor. Therefore, in case of the cursor display, the 8th line should be "0". If there is "1" in the 8th line, the bit "1" is always displayed on the cursor position regardless of cursor existence.
 3. Character pattern row position correspond to the CG RAM data bits 0 to 4 are shown above. The bits 5 to 7 of the CG RAM are not appear on the display (no meaning for the display), but memory elements are existing, therefore it can be used as the general purpose RAM.
 4. CG RAM character patterns are selected when character code bits 4 to 7 are all "0" and it is addressed by character code bits 0 to 2. Therefore, the address (00)_H and (08)_H, (01)_H and (09)_H, -----, (07)_H and (0F)_H select the same character pattern as shown in Table 2-1 to 2-3. and Table 3.
 5. "1" for CG RAM data corresponds to display On and "0" to display Off.

(1-7) Timing Generator

The timing generator generates a timing signals for the DD RAM, CG RAM, CG ROM and other internal circuits operation.

RAM read timing for the display and internal operation timing for MPU access are separately generated, so that they may not interfere with each other.

Therefore, when the data write to the DD RAM for example, there will be no undesirable influence, such as flickering, in areas other than the display area.

(1-8) LCD Driver

LCD driver consist of 32-common driver and 40-segment driver.

When the line number is selected by a program, the required common drivers output the common driving waveform and the other common drivers output non-selection waveform automatically.

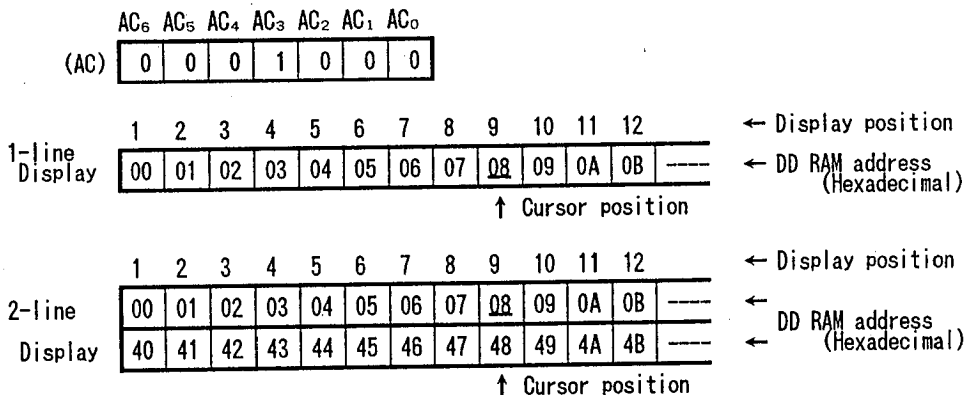
The 40 bits of character pattern data are shifted in the shift-register and latched when the 40 bits shift performed completely. This latched data controls display driver to output LCD driving waveform.

(1-9) Cursor Blinking Control Circuit

This circuits controls cursor On/Off and the cursor position character blinks.

The cursor or blinks appear in the digit residing at the DD RAM address set in the address counter (AC).

When the address counter is (08)_H, a cursor position is shown as follows:

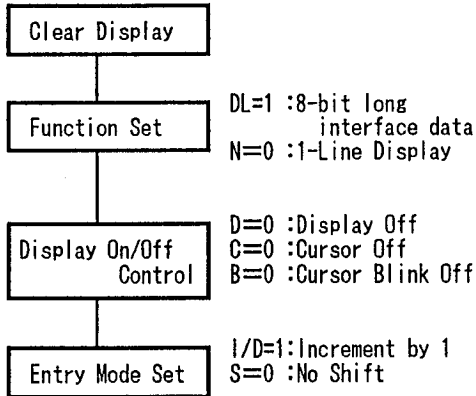


(Note) The cursor or blinks also appear when the address counter (AC) selects the CG RAM. But the displayed cursor and blink are meaningless. If the AC storing the CG RAM address data, the cursor and blink are displayed in the meaningless position.

(2) Power on Initialization by internal circuits

The NJU6420B is automatically initialized by internal power on initialization circuits when the power is turned on. In the internal power on initialization, following instructions are executed. During the internal power on initialization, the busy flag (BF) is "1" and this status is kept 10 ms after V_{DD} rises to 4.5V.

Initialization flow is shown below:



NOTE

If the condition of power supply rise time described in the Electrical Characteristics is not satisfied, the internal Power On Initialization Circuits will not operate and initialization will not be performed.

In this case the initialization by MPU software is required.

(3) Instructions

The NJU6420B incorporates two registers, an Instruction Register (IR) and a Data Register (DR). These two registers store control information temporarily to allow interface between NJU6420B and MPU or peripheral ICs operating different cycles. The operation of NJU6420B is determined by this control signal from MPU. The control information includes register selection signals (RS), read/write signals (R/W) and data bus signals (DB_0 to DB_7).

Table 4. shows each instruction and its operating time.

Note) The execution time mentioned in Table 4. based on f_{cp} or $f_{osc}=290kHz$.

If the oscillation frequency is changed, the execution time is also changed.

Table 4. Table of Instructions

INSTRUCTIONS	C O D E										DESCRIPTION	EXEC TIME
	RS	R/W	DB ₇	DB ₆	DB ₅	DB ₄	DB ₃	DB ₂	DB ₁	DB ₀		
Non-operation	0	0	0	0	0	0	0	0	0	0	Non-operation. Only takes judgement machine cycle.	35us
Clear Display	0	0	0	0	0	0	0	0	0	1	Display clear and sets DD RAM address 0 in AC.	1.42ms
Return Home	0	0	0	0	0	0	0	0	1	*	Sets DD RAM address 0 in AC and returns display being shifted to original position. DD RAM contents remain unchanged	1.42ms
Entry Mode Set	0	0	0	0	0	0	0	1	I/D	S	Sets cursor move direction and specifies shift of display are performed in data read/write. I/D=1: Increment, I/D=0: Decrement S=1: Accompanies display shift	35us
Display On/Off Control	0	0	0	0	0	0	1	D	C	B	Sets of display On/Off(D), cursor On/Off(C) and blink of cursor position character(B).	35us
Cursor or Display Shift	0	0	0	0	0	1	S/C	R/L	*	*	Moves cursor and shifts display without changing DD RAM contents S/C=1 : Display shift S/C=0 : Cursor shift R/L=1 : Shift to the right R/L=0 : Shift to the left	52us
Function Set	0	0	0	0	1	DL	N	*	*	*	Sets interface data length(DL), number of display lines(N). DL=1 : 8 bits, DL=0 : 4 bits N=1 : 2 lines, N=0 : 1 line	35us
Set CG RAM Address	0	0	0	1	←←← A _{CG} →→→						Sets CG RAM address. After this instruction, the data is transferred to/from CG RAM.	35us
Set DD RAM Address	0	0	1	←←← A _{DD} →→→						Sets DD RAM address. After this instruction, the data is transferred to/from DD RAM.	35us	
Read Busy Flag & Address	0	1	BF	←←← AC →→→						Reads busy flag and AC contents. BF=1 : Internally operating BF=0 : Can accept instruction	0us	
Write Data to CG & DD RAM	1	0	←←← Write Data →→→						Writes data into DD or CG RAMs.	35us		
Read Data from CG or DD RAM	1	1	←←← Read Data →→→						Reads data from DD or CG RAMs.	52us		
Explanation of Abbreviation	DD RAM : Display data RAM, CG RAM : Character generator RAM A _{CG} : CG RAM address, A _{DD} : DD RAM address, Corresponds to cursor address AC : Address counter used for both of DD and CG RAMs											

5

(3-1) Description of each instructions

(a) NOP (Non operation)

	RS	R/W	DB ₇	DB ₆	DB ₅	DB ₄	DB ₃	DB ₂	DB ₁	DB ₀
Code	0	0	0	0	0	0	0	0	0	0

Non operation instruction. It consumes certain judgement machine cycles only.

(b) Clear Display

	RS	R/W	DB ₇	DB ₆	DB ₅	DB ₄	DB ₃	DB ₂	DB ₁	DB ₀
Code	0	0	0	0	0	0	0	0	0	1

Clear display instruction is executed when the code "1" is written into DB₀. When this instruction is executed, the space code (20)_H is written into every DD RAM address, the DD RAM address 0 is set into the address counter and entry mode is set increment.

If the cursor or blink are displayed, they are returned to the left end of the LCD (the left end of the 1st line in the 2-line display mode).

The S of entry mode does not change.

Note: The character pattern for character code (20)_H must be blank code in the user-defined character pattern(Custom font).

(c) Return Home

	RS	R/W	DB ₇	DB ₆	DB ₅	DB ₄	DB ₃	DB ₂	DB ₁	DB ₀
Code	0	0	0	0	0	0	0	0	1	*

* = Don't care

Return home instruction is executed when the code "1" is written into DB₁. When this instruction is executed, the DD RAM address 0 is set into the address counter. Display is returned its original position if shifted, the cursor or blink are returned to the left end of the LCD (the left end of the 1st line in the 2-line display mode) if the cursor or blink are on the display.

The DD RAM contents do not change.

(d) Entry Mode Set

	RS	R/W	DB ₇	DB ₆	DB ₅	DB ₄	DB ₃	DB ₂	DB ₁	DB ₀
Code	0	0	0	0	0	0	0	1	I/D	S

Entry mode set instruction which sets the cursor moving direction and display shift On/Off, is executed when the code "1" is written into DB₂ and the codes of (I/D) and (S) are written into DB₁(I/D) and DB₀(S), as shown below.

(I/D) sets the address increment or decrement, and the (S) sets the entire display shift in the DD RAM writing.

I/D	F u n c t i o n
1	Address increment: The address of the DD RAM or CG RAM increment (+1) when the read/write, and the cursor or blink move to the right.
0	Address decrement: The address of the DD RAM or CG RAM decrement (-1) when the read/write, and the cursor or blink move to the left.

S	F u n c t i o n
1	Entire display shift. The shift direction is determined by I/D.: shift to the left at I/D=1 and shift to the right at the I/D=0. The shift is operated only for the character, so that it looks as if the cursor stands still and the display moves. The display does not shift when reading from the DD RAM and writing/reading into/from CG RAM.
0	The display does not shifting.

(e) Display On/Off Control

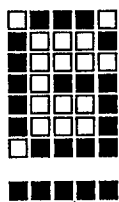
	RS	R/W	DB ₇	DB ₆	DB ₅	DB ₄	DB ₃	DB ₂	DB ₁	DB ₀
Code	0	0	0	0	0	0	1	D	C	B

Display On/Off control instruction which controls the whole display On/Off, the cursor On/Off and the cursor position character blink, is executed when the code "1" is written into DB₃ and the codes of (D), (C) and (B) are written into DB₂(D), DB₁(C) and DB₀(B), as shown below.

D	F u n c t i o n
1	Display On.
0	Display Off. In this mode, the display data remains in the DD RAM so that it is retrieved immediately on the display when the D change to 1.

C	F u n c t i o n
1	Cursor On. The cursor is displayed by 5 dots on the 8th line.
0	Cursor Off. Even if the display data write, the I/D etc does not change.

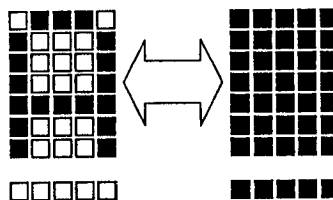
B	F u n c t i o n
1	The cursor position character is blinking. Blinking rate is 488.9ms at $f_{osc} = 290kHz$. The blink is displayed alternatively with all on (it means all black) and character display. The cursor and the blink can be displayed simultaneously.
0	The character does not blink.



Cursor

Character Font 5 x 7 dots

(1) Cursor display example



Alternating display

(2) Blink display example

(f) Cursor/Display Shift

	RS	R/W	DB ₇	DB ₆	DB ₅	DB ₄	DB ₃	DB ₂	DB ₁	DB ₀	
Code	0	0	0	0	0	1	S/C	R/L	*	*	* = Don't care

The Cursor/Display shift instruction shifts the cursor position or display to the right or left without writing or reading display data. This function is used to correct or search the display. In the 2-line display, the cursor moves to the 2nd line when it passes the 40th digit of the 1st line. Notice that the 1st and 2nd line displays will shift at the same time. When the displayed data is shifted repeatedly, each line moves only horizontally.

The 2nd line display does not shift into the 1st line position.

The contents of address counter(AC) does not change by operation of the display shift only.

This instruction is executed when the code "1" is written into DB₄ and the codes of (S/C) and (R/L) are written into DB₃(S/C) and DB₂(R/L), as shown below.

S/C	R/L	F u n c t i o n
0	0	Shifts the cursor position to the left ((AC) is decremented by 1)
0	1	Shifts the cursor position to the right ((AC) is incremented by 1)
1	0	Shifts the entire display to the left and the cursor follows it.
1	1	Shifts the entire display to the right and the cursor follows it.

(g) Function Set

	RS	R/W	DB ₇	DB ₆	DB ₅	DB ₄	DB ₃	DB ₂	DB ₁	DB ₀	
Code	0	0	0	0	1	DL	N	*	*	*	* = Don't care

Function set instruction which sets the interface data length and number of display lines, is executed when the code "1" is written into DB₅ and the codes of (DL) and (N) are written into DB₄(DL) and DB₃(N)), as shown below (character font is fixed 5 x 7 dots).

(DL) sets the interface data length and (N) sets the number of display lines either the 1-line or 2-line.

NOTE

This function set instruction must be performed at the head of the program prior to all other existing instructions(except Busy flag/Address read). This function set instruction can not be executed afterwards unless the interface data length change.

DL	F u n c t i o n
1	Set the interface data length to 8-bit (DB ₇ to DB ₀)
0	Set the interface data length to 4-bit (DB ₇ to DB ₄) The data must be sent or received twice in this mode.

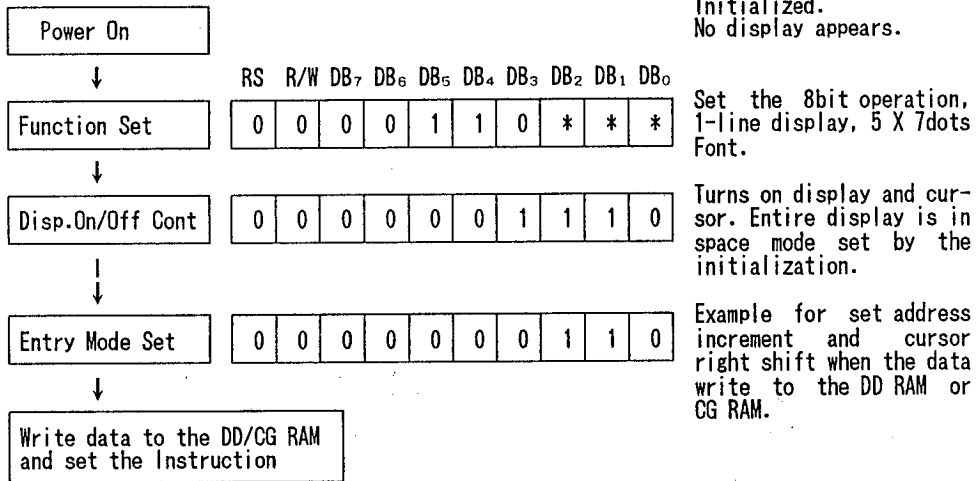
N	Display lines	Character Font	Duty ratio	N o t e
0	1	5 x 7 dots	1/16	
1	2	5 x 7 dots	1/32	

(3-2) Initialization using the internal reset circuits

(a) 16-character 1-line display in 8-bit operation (Using internal reset circuits).

At the 16-character 1-line display, the Function set, Display On/Off Control and Entry Set Instruction must be executed before the data input, as shown below.

The DD RAM of the NJU6420B can store up to 80 characters, as explained before, therefore the advertising moving display is available when combined with the display shift operation. Since the display shift operation changes only display position and the DD RAM contents remain unchanged, display data which are entered first can be output when the return home operation is performed.

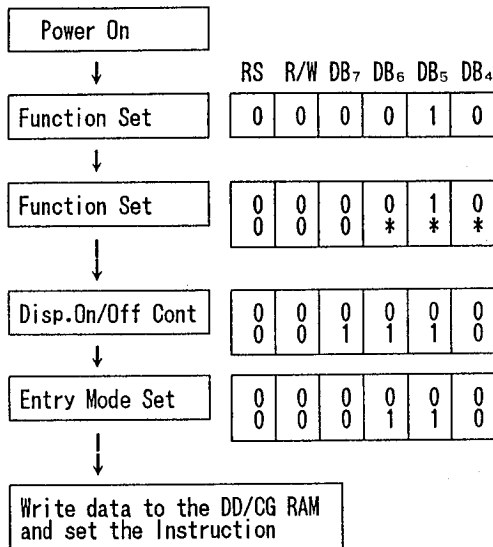


(b) 16-character 1-line in 4-bit operation (Using internal reset circuits).

In the 4-bit operation, the function set must be performed by the user programming.

When the power is turned on, 8-bit operation is selected automatically, therefore the first input is performed under 8-bit operation. In this operation, full instruction can not input because of terminals DB₀ to DB₃ are no connection. Therefore, same instruction must be rewritten on the RS, R/W and DB₇ to DB₄, as shown below. Since one operation is completed by the two accesses in the 4-bit operation mode, rewrite is required to set the instruction code in full.

16-character 1-line in 4-bit operation is shown as follows:



Initialized.
No display appears.

Set the 4-bit operation.
This step is executed in 8-bit mode
set by the initialization.

Set the 4-bit operation, 1-line display,
5 X 7dots Font.
The 4-bit operation starts from this
step.

Turn on display and cursor.
Entire display is in space mode set by
the initialization.

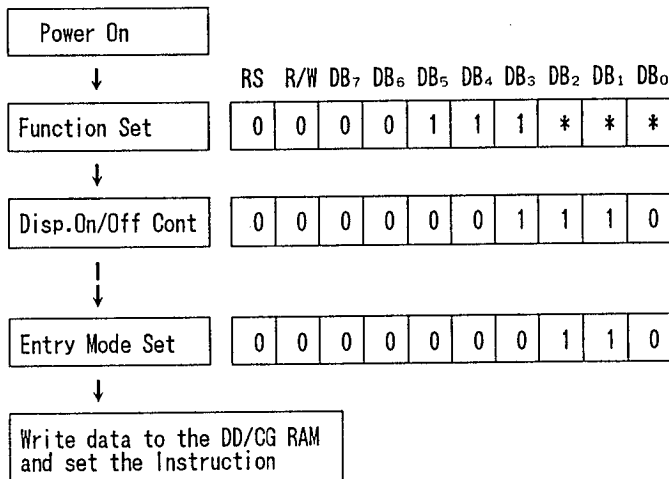
Example for set address increment and
cursor right shift when the data write
to the DD RAM or CG RAM.

(c) 16-character 2-line in 8-bit operation (Using internal reset circuits).

In the 2-line display, the cursor moves automatically from the 1st to the 2nd line after the 40th character of the first line has been written. Therefore, if the display character is only 16 characters in the 1st line, the DD RAM address must be set by the user programming to change the cursor position to the 2nd line.

The 1st and 2nd line displays will shift at the same time.

When the displayed data is shifted repeatedly, each line moves only horizontally. The 2nd line display does not shift into the 1st line position.



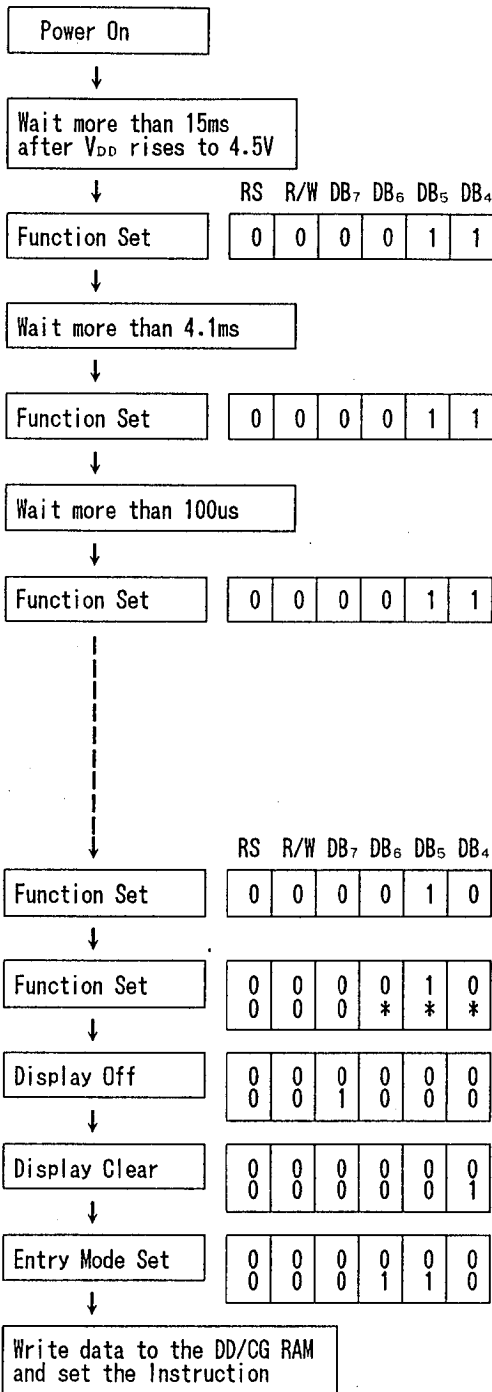
Initialized.
No display appears.

Set the 8-bit operation,
2-line display, 5 X 7dots
Font.

Turns on display and cursor.
Entire display is in space mode set by the
initialization.

Example for set address
increment and cursor
right shift when the data
write to the DD or CG
RAM.

(b) Initialization by Instruction in 4-bit interface length



Initialized.
No display appears.

Function Set
(8-bit interface length)

Function Set
(8-bit interface length)

Function Set
(8-bit interface length)

Busy Flag (BF) can not be checked before this step, but it can be checked after this step. After this step, busy flag (BF) check or longer waiting time than each instruction execution time is required.

Function Set
Set 4-bit interface length by 8-bit interface length.

Set the 4-bit operation, 1-line display, 5 X 7 dots Font.

Example for set address increment and cursor right shift when the data write to the DD RAM or CG RAM.

5

(4) LCD DISPLAY

(4-1) Power Supply for LCD Driving

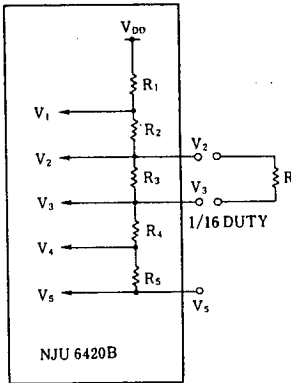
NJU6420B incorporate voltage doubler to generate LCD driving high voltage and bleeder resistance. The voltage doubler generate about twofold voltage from the V_{C1} input voltage (9.5V typ at $I_{out}=2mA$ and $V_{C1}=5V$) and bleeder resistance generate each LCD driving voltage.

The bleeder resistance is set 1/6.7 bias suitable for 1/32 duty ratio and each resistance value are $1k\Omega$ typ for R_1, R_2, R_4 and R_5 , and $2.7k\Omega$ typ for R_3 .

Furthermore, the both ends of resistance R_3 have each terminals to change the bias level to 1/5 suitable for 1/16 duty ratio by connecting external resistance.

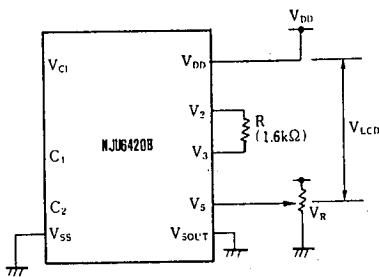
When LCD drives by only 5V (logic operating voltage), open the terminals C_1, C_2 and connect the V_{SOUT} to the V_{SS} . In this time brightness must be adjusted by using the V_5 terminal.

Internal Bleeder Resistance

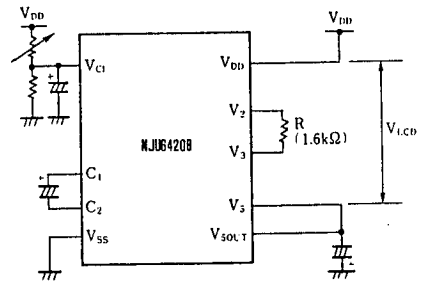


LCD Driving Voltage vs Duty Ratio

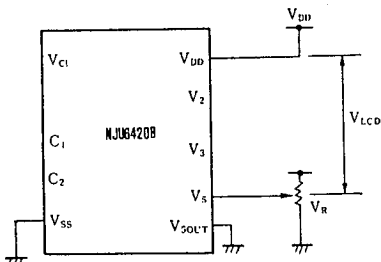
Power supply	Duty Ratio	1/32	1/16
	Bias	1/6.7	1/5
	External R	No	$1.6k\Omega$
V_5		V_{DD} to V_{LCD}	



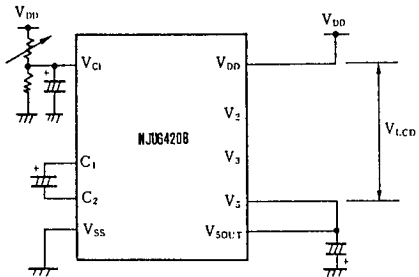
(a) 1/5 Bias (1/16 Duty)
(Internal Voltage Doubler No-use Example)



(b) 1/5 Bias (1/16 Duty)
(Internal Voltage Doubler Using Example)



(c) 1/6.7 Bias (1/32 Duty)
(Internal Voltage Doubler No-use Example)



(d) 1/6.7 Bias (1/32 Duty)
(Internal Voltage Doubler Using Example)

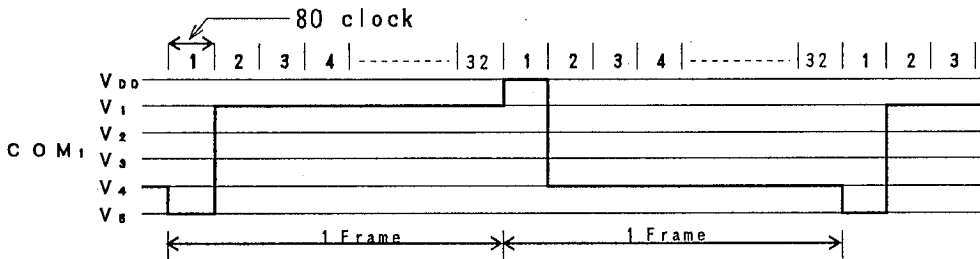
(4-2) Relation between oscillation frequency and LCD frame frequency.

As the NJU6420B incorporates oscillation capacitor and resistor for CR oscillation, 290kHz oscillation is available without any external components.

In case of the high frequency operation, it is available by connecting external resistance between OSC₁ and OSC₂.

The LCD frame frequency example mentioned below is based on 290kHz oscillation.
 (1 clock = 3.4us)

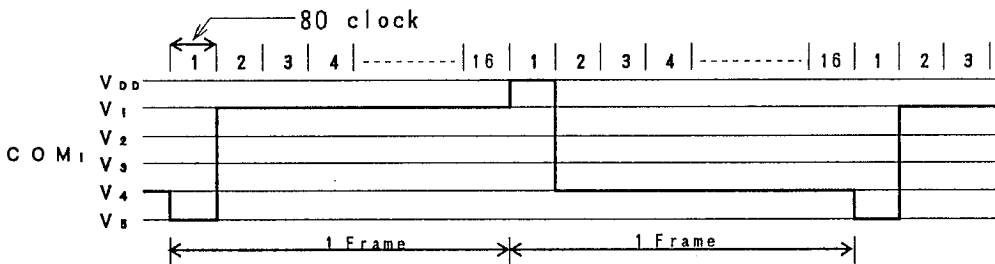
(a) 1/32 duty



$$1 \text{ frame} = 3.4(\text{us}) \times 80 \times 32 = 8,704(\text{us}) = 8.704(\text{ms})$$

$$\text{Frame frequency} = 1/8.704(\text{ms}) = 115(\text{Hz})$$

(b) 1/16 duty



$$1 \text{ frame} = 3.4(\text{us}) \times 80 \times 16 = 4,352(\text{us}) = 4.352(\text{ms})$$

$$\text{Frame frequency} = 1/4.352(\text{ms}) = 229(\text{Hz})$$

5

(5) Interface with MPU

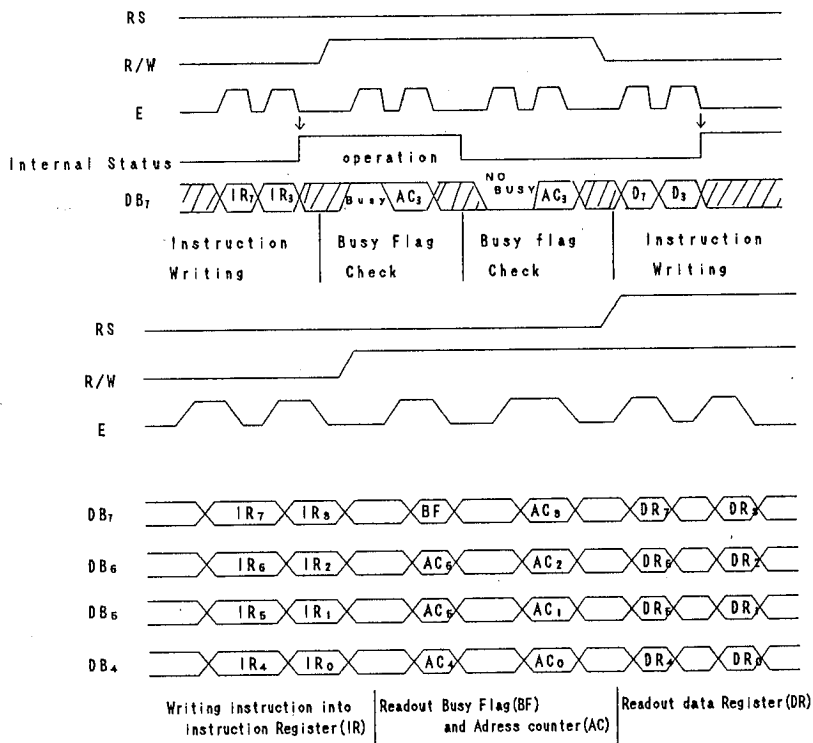
NJU6420B can be interfaced with both of 4/8 bits MPU and the two-time 4-bit or one-time 8-bit data transfer is available.

(5-1) 4-bit MPU interface

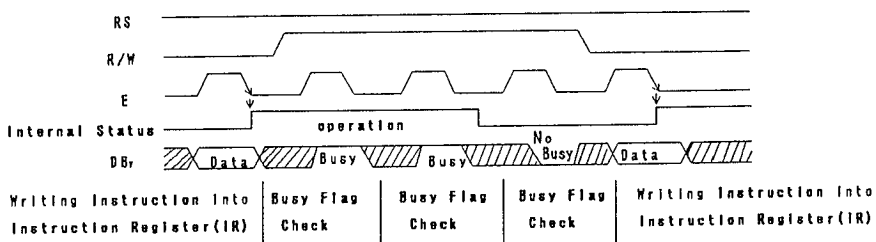
When the interface length is 4-bit, the data transfer is performed by 4 lines connected to DB₄ to DB₇ (DB₀ to DB₃ are not used). The data transfer with the MPU is completed by the two-time 4-bit data transfer.

The data transfer is executed in the sequence of upper 4-bit (the data DB₄ to DB₇ at 8-bit length) and lower 4-bit (the data DB₀ to DB₃ at 8-bit length).

The busy flag check must be executed after two-time 4-bit data transfer (1 instruction execution). In this case the data of busy flag and address counter are also output twice.



(5-2) 8-bit MPU interface



■ ABSOLUTE MAXIMUM RATINGS

(Ta=25°C)

PARAMETER	SYMBOL	RATINGS	UNIT
Supply Voltage (1)	V _{DD}	- 0.3 ~ + 7.0	V
Supply Voltage (2)	V ₁ ~ V ₅	V _{DD} -13.5 ~ V _{DD} +0.3	V
Input Voltage	V _{IN}	- 0.3 ~ V _{DD} +0.3	V
Operating Temperature	T _{opr}	- 30 ~ + 80	°C
Storage Temperature	T _{stg}	- 55 ~ + 125	°C

Note 1) If the LSI are used on condition above the absolute maximum ratings, the LSI may be destroyed.

Using the LSI within electrical characteristics is strongly recommended for normal operation.

Use beyond the electric characteristics conditions will cause malfunction and poor reliability.

Note 2) All voltage values are specified as V_{SS} = 0 V

Note 3) The relation ; V_{DD} ≥ V_{ci} > V_s ≥ V_{sOUT} , V_{SS}=0V must be maintained.

Note 4) Decoupling capacitor(C_D) should be connected between V_{ci} and V_{SS} due to stabilized operation for the voltage doubler.

■ ELECTRICAL CHARACTERISTICS

 (V_{DD}=5V±10% , Ta=-20 ~ +75°C)

PARAMETER		SYMBOL	CONDITIONS	MIN	TYP	MAX	UNIT	NOTE
Operating Voltage		V _{DD}		4.5	5.0	5.5	V	
Input Voltage	1	V _{IH1}	All Input and Input/Output Terminals except OSC Terminals	2.3		V _{DD}	V	5
		V _{IL1}				0.8		
	2	V _{IH2}	Only OSC Terminal	V _{DD} -1		V _{DD}		
		V _{IL2}				1.0		
Output Voltage	1	V _{OH1}	Input/Output Terminals	-I _{OH} =0.205mA	2.4		V	
		V _{OL1}		I _{OL} =1.6mA		0.4		
	2	V _{OH2}	Output Terminals	-I _{OH} =0.04mA	0.9V _{DD}			
		V _{OL2}		I _{OL} =0.04mA		0.1V _{DD}		
Driver On-resist.(COM)		R _{COM}	±I _d =0.05mA(All com.term.)			20	kΩ	6
Driver On-resist.(SEG)		R _{SEG}	±I _d =0.05mA(All seg.term.)			30	kΩ	
Input Leakage Current		I _{L1}	V _{IN} =0 ~ V _{DD}	- 1		1	μA	7
Pull-up Resist Current		-I _P	V _{DD} =5V, RS, R/W, DB	50	125	250	μA	
Operating Current		I _{DD}	V _{DD} =5V, CR Oscillator		1.9	3.3	mA	8
Voltage Doubler	Output Voltage	V _{up}	V _{ci} =5V, I _{OUT} =1mA Ta=25°C	-4.6	-4.8		V	9
	Conv.Effici.	V _{EF}	R _L =∞	95	99.9		%	
	Input Voltage	V _{ci}		2.5		5.5	V	
Built-in Bleeder resistance (For LCD Driving Voltage)		R ₁	Ta=25°C		1.00		kΩ	
		R ₂			1.00			
		R ₃			2.70			
		R ₄			1.00			
		R ₅			1.00			
Oscillation Frequency		f _{OSC}	V _{DD} =5V, Ta=25°C	190	290	350	kHz	10
LCD Driving Voltage		V _{LCD}	V _{DD} - V _S 1/5, 1/6.7 Bias	V _{DD} -3.0		V _{DD} -13.5	V	11

5

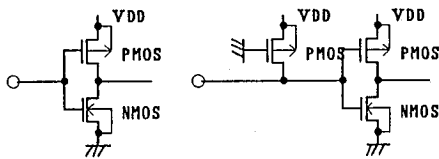
■ ELECTRICAL CHARACTERISTICS

($V_{DD}=3V \pm 20\%$, $T_a=-20 \sim +75^\circ C$)

PARAMETER		SYMBOL	CONDITIONS		MIN	TYP	MAX	UNIT	NOTE
Operating Voltage		V_{DD}			2.4	3.0	3.6	V	
Input Voltage	1	V_{IH1}	All Input and Input/Output Terminals except OSC Terminals		$0.8V_{DD}$		V_{DD}	V	5
		V_{IL1}			$0.2V_{DD}$				
Output Voltage	1	V_{OH1}	Input/Output Terminals	$-I_{OH}=0.205mA$	2.0		0.5	V	
		V_{OL1}		$I_{OL}=1.6mA$					
	2	V_{OH2}	Output Terminals	$-I_{OH}=0.04mA$	$0.9V_{DD}$		$0.1V_{DD}$		
		V_{OL2}		$I_{OL}=0.04mA$					
Driver On-resist.(COM)		R_{COM}	$\pm I_d=0.05mA$ (All com.term.)				20	$k\Omega$	6
Driver On-resist.(SEG)		R_{SEG}	$\pm I_d=0.05mA$ (All seg.term.)				30		
Input Leakage Current		I_{LI}	$V_{IN}=0 \sim V_{DD}$		-1		1	μA	7
Pull-up Resist Current		$-I_P$	$V_{DD}=3V$, RS, R/W, DB		10	25	50		
Operating Current		I_{DD}	$V_{DD}=3V$, CR Oscillator			1.1	1.8	mA	8
Voltage Doubler	Output Voltage	V_{up}	$V_{CI}=3V$, $I_{OUT}=1mA$	$T_a=25^\circ C$	-2.5	-2.75		V	9
	Conv.Effici.	V_{EF}	$R_L=\infty$		95	99.9		%	
	Input Voltage	V_{CI}			1.8		V_{DD}	V	
Built-in Bleeder resistance (For LCD Driving Voltage)		R_1	$T_a=25^\circ C$			1.00		$k\Omega$	
		R_2			1.00				
		R_3			2.70				
		R_4			1.00				
		R_5			1.00				
Oscillation Frequency		f_{osc}	$V_{DD}=3V$, $T_a=25^\circ C$		160	260	320	kHz	10
LCD Driving Voltage		V_{LCD}	$V_{DD} - V_5$	1/5, 1/6.7 Bias	V_{DD} -3.0		V_{DD} -12.0	V	11

Note 5) Input/Output structure except LCD driver are shown below:

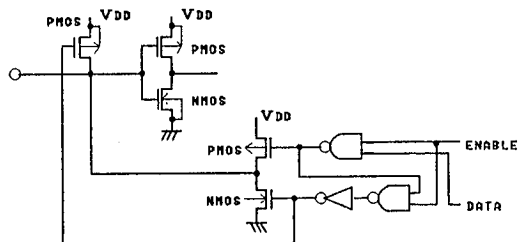
Input Terminal Structure



E Terminal

RS,R/W Terminals

Input/Output Terminal Structure

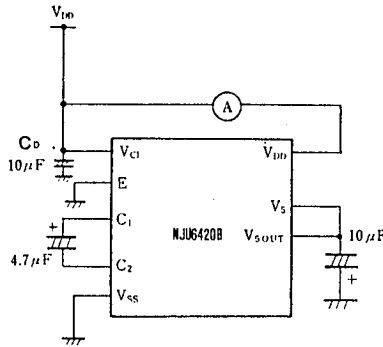


DB₀ to DB₇ Terminals

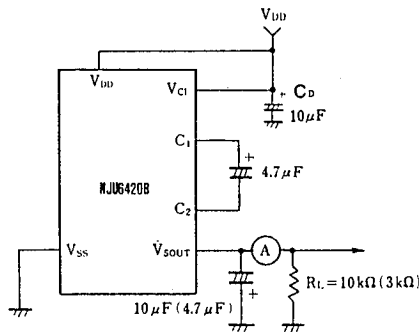
Note 6) R_{COM} and R_{SEG} are the resistance values between power supply terminals (V_{DD} , V_1 , V_4 , V_5) and each common terminal (COM_1 to COM_{32}), and supply voltage (V_{DD} , V_2 , V_3 , V_5) and each segment terminal (SEG_1 to SEG_{40}) respectively, and measured when the current I_d is flown on every common and segment terminals at a same time.

Note 7) Except pull-up resistance current and output driver current.

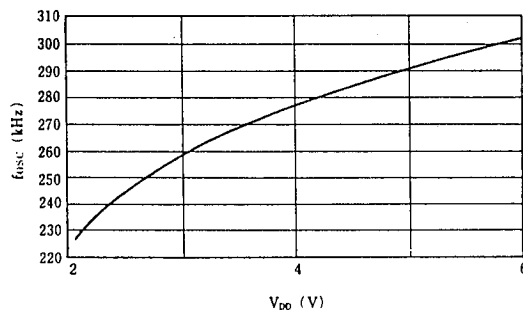
Note 8) Except input/output current but including the current flow on bleeder resistance. If the input level is medium, current consumption will increase due to the penetration current. Therefore, the input level must be fixed to "H" or "L".



Note 9) Voltage Doubler Characteristics Measuring Circuit.



Note 10) Supply Voltage vs Oscillation Frequency



Note 11) Apply to the output voltage from each COM and SEG are less than $\pm 0.15V$ against the LCD driving constant voltage (V_{DD} , V_1 , V_2 , V_3 , V_4 , V_5) at no load condition.

• Bus timing characteristics

Write operation (Write from MPU to NJU6420B)

($V_{DD} = 5.0V \pm 10\%$, $V_{SS} = 0V$, $T_a = -20 \sim +75^\circ C$)

PARAMETER		SYMBOL	MIN	MAX	CONDITION	UNIT
Enable Cycle Time		t_{CYCE}	500		fig.1	ns
Enable Pulse Width	"High" level	P_{WEH}	220			
Enable Rise Time, Fall Time		t_{Er} , t_{Ef}		20		
Set up Time	RS, R/W, E	t_{AS}	40			
Address Hold Time		t_{AH}	10			
Data Set up Time		t_{DSW}	60			
Data Hold Time		t_H	10			

Write operation (Write from MPU to NJU6420B)

($V_{DD} = 3.0V \pm 20\%$, $V_{SS} = 0V$, $T_a = -20 \sim +75^\circ C$)

PARAMETER		SYMBOL	MIN	MAX	CONDITION	UNIT
Enable Cycle Time		t_{CYCE}	1.4		fig.1	μs
Enable Pulse Width	"High" level	P_{WEH}	500			ns
Enable Rise Time, Fall Time		t_{Er} , t_{Ef}		20		
Set up Time	RS, R/W, E	t_{AS}	70			
Address Hold Time		t_{AH}	10			
Data Set up Time		t_{DSW}	140			
Data Hold Time		t_H	10			

5

Timing Characteristics (Write operation)

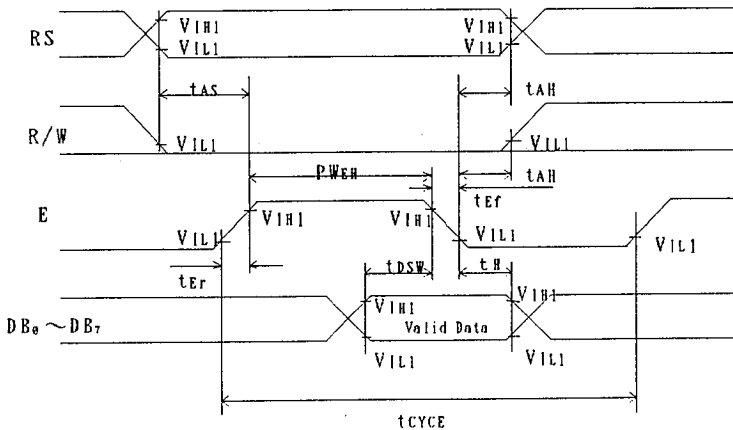


fig. 1 The timing characteristics of the bus write operating sequence.
(Write from MPU to NJU6420B)

Read operation (Read from NJU6420B to MPU)

 ($V_{DD} = 5.0V \pm 10\%$, $V_{SS} = 0V$, $T_a = -20 \sim +75^\circ C$)

PARAMETER		SYMBOL	MIN	MAX	CONDITION	UNIT
Enable Cycle Time		t_{CYCE}	500		fig.2	ns
Enable Pulse Width	"High" level	P_{WEH}	220			
Enable Rise Time, Fall Time		t_{Er} , t_{Ef}		20		
Set up Time	RS, R/W, E	t_{AS}	40			
Address Hold Time		t_{AH}	10			
Data Delay Time		t_{DDW}		120		
Data Hold Time		t_{DDH}	20			

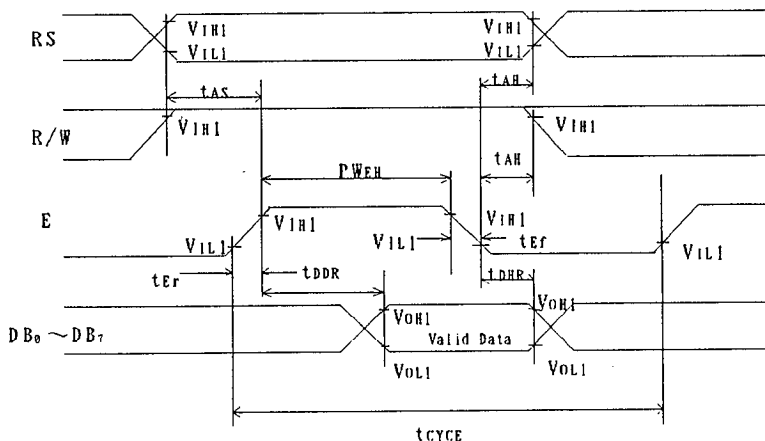
Read operation (Read from NJU6420B to MPU)

 ($V_{DD} = 3.0V \pm 20\%$, $V_{SS} = 0V$, $T_a = -20 \sim +75^\circ C$)

PARAMETER		SYMBOL	MIN	MAX	CONDITION	UNIT
Enable Cycle Time		t_{CYCE}	1.4		fig.2	μs
Enable Pulse Width	"High" level	P_{WEH}	500			ns
Enable Rise Time, Fall Time		t_{Er} , t_{Ef}		20		
Set up Time	RS, R/W, E	t_{AS}	40			
Address Hold Time		t_{AH}	70			
Data Delay Time		t_{DDW}		600		
Data Hold Time		t_{DDH}	20			

 Load Condition of DB_0 to DB_7 : $C_L = 100pF$

Timing Characteristics (Read operation)


 fig. 2 The timing characteristics of the bus read operating sequence.
 (Read from NJU6420B to MPU)

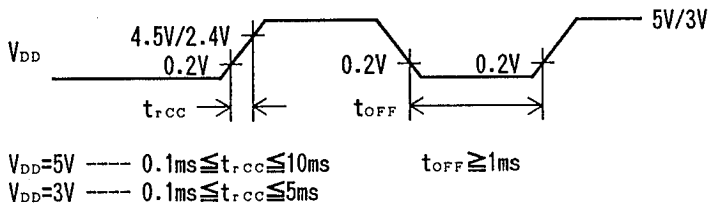
- Power Supply Condition when using the internal initialization circuit
 ($V_{DD} = 5.0V \pm 10\%$, $V_{SS} = 0V$, $T_a = -20 \sim +75^\circ C$)

PARAMETER	SYMBOL	MIN	TYP	MAX	CONDITION	UNIT
Power Supply Rise Time	t_{rcc}	0.1	—	10		ms
Power Supply OFF Time	t_{off}	1	—			

- Power Supply Condition when using the internal initialization circuit
 ($V_{DD} = 3.0V \pm 20\%$, $V_{SS} = 0V$, $T_a = -20 \sim +75^\circ C$)

PARAMETER	SYMBOL	MIN	TYP	MAX	CONDITION	UNIT
Power Supply Rise Time	t_{rcc}	0.1	—	5		ms
Power Supply OFF Time	t_{off}	1	—			

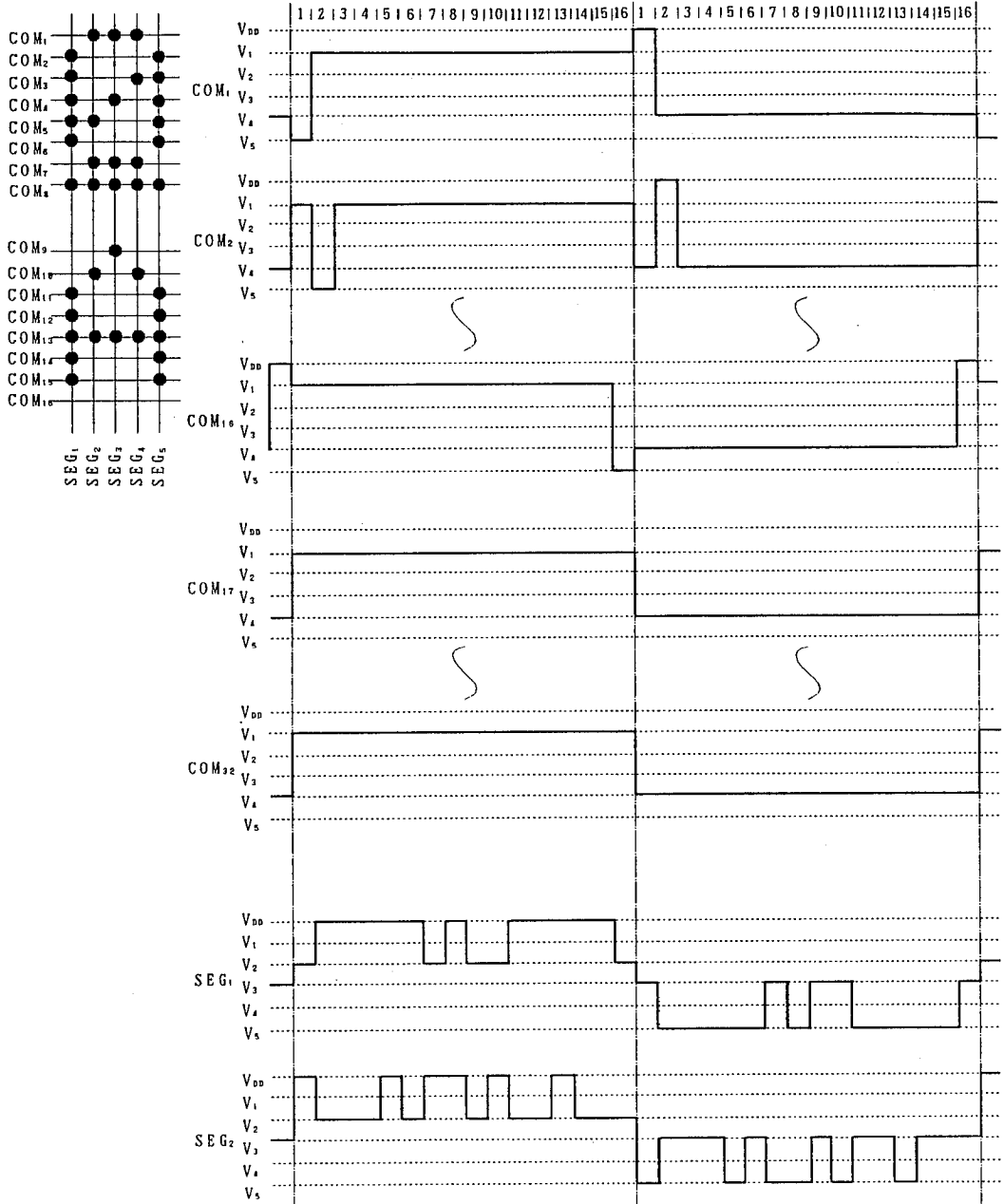
Since the internal initialization circuits will not operate normally unless the above conditions are met, in such a case it must initialize by instruction.
 (Refer to initialization by the instruction)



t_{off} specifies power off time in a short period off or cyclical on/off.

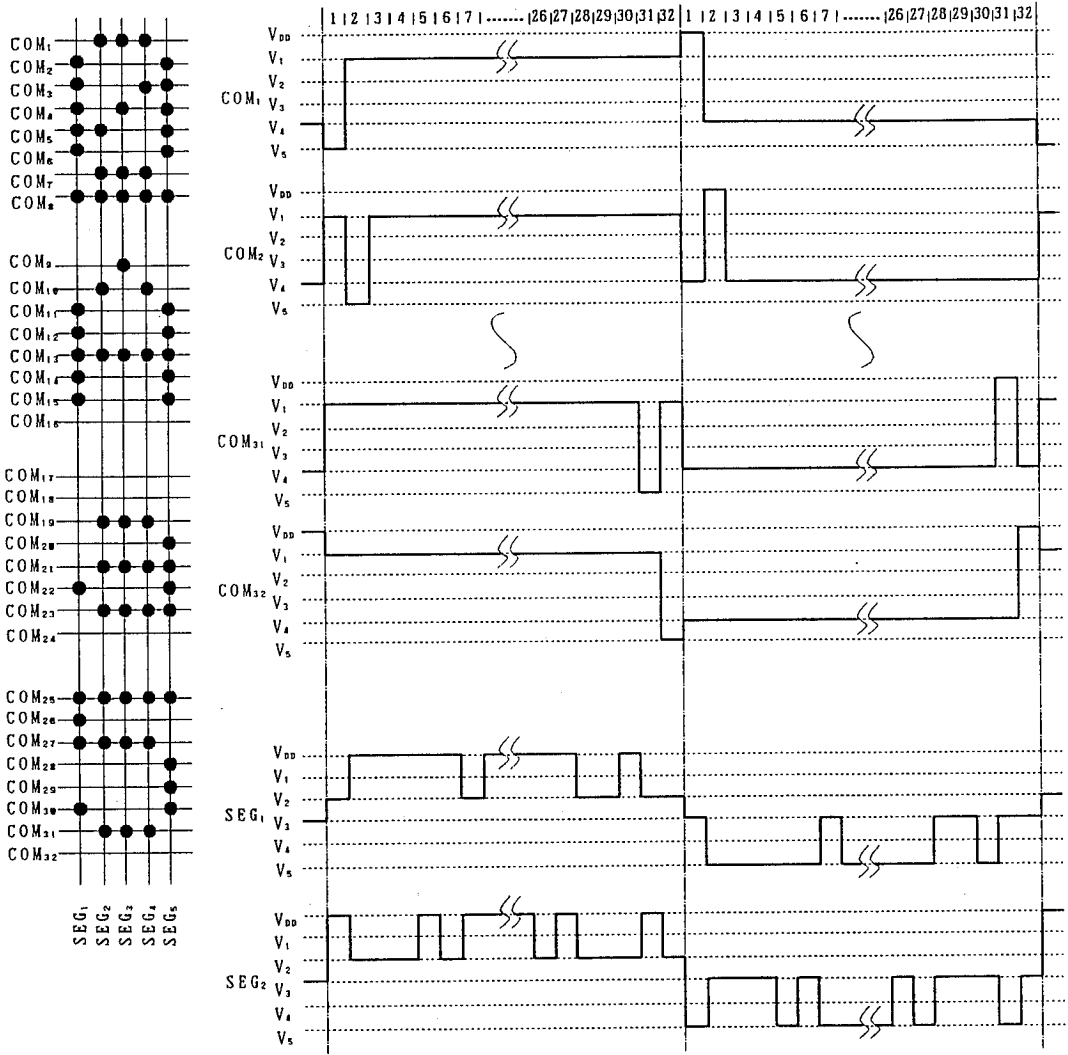
■ LCD DRIVING WAVEFORM

1/16 Duty Driving

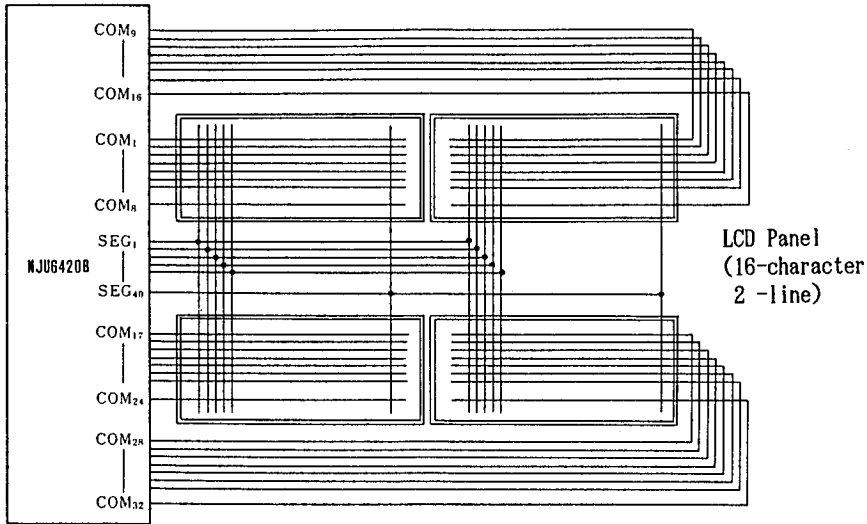


■ LCD DRIVING WAVEFORM

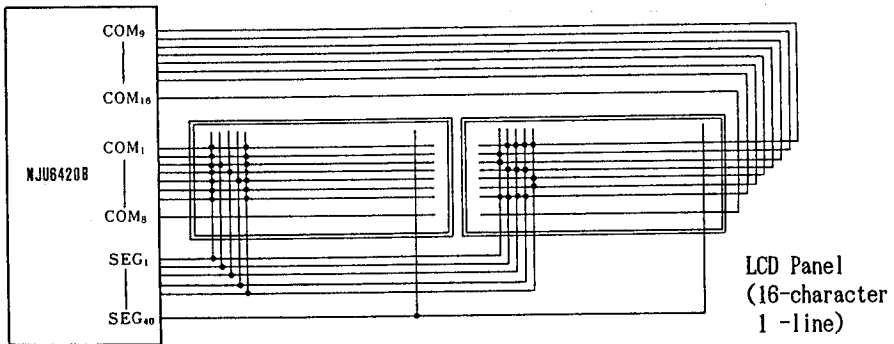
1/32 Duty Driving



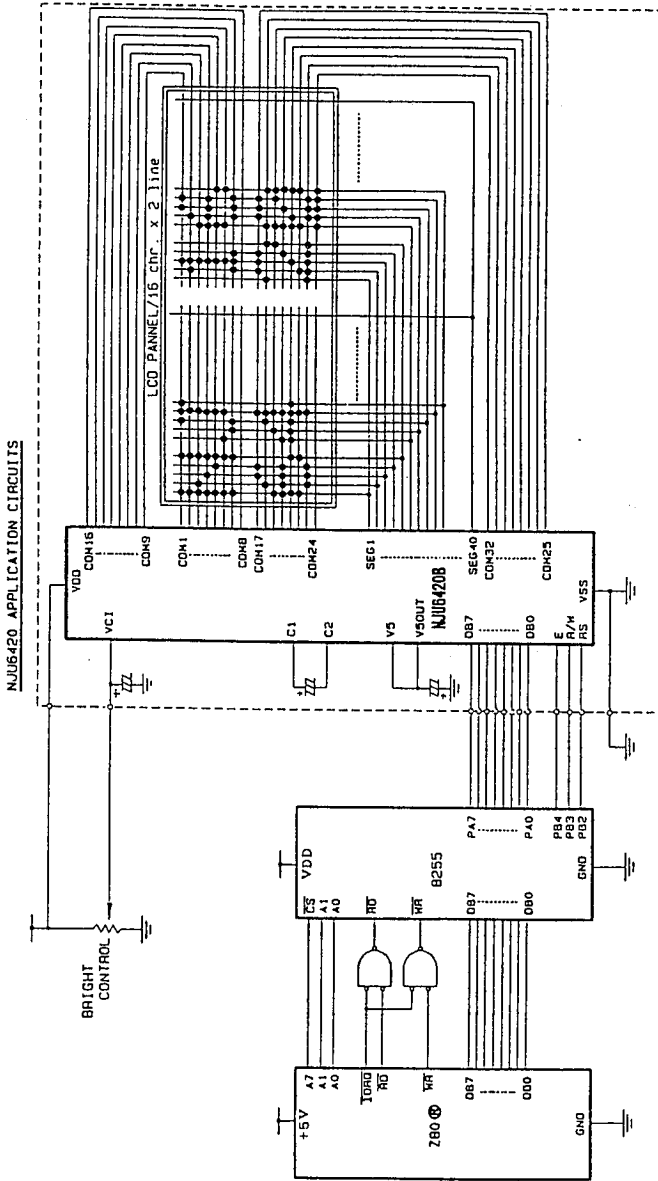
■ APPLICATION CIRCUITS



(a) 5 x 7 dots, 16-character 2-line display example (1/6.7 Bias, 1/32 Duty)



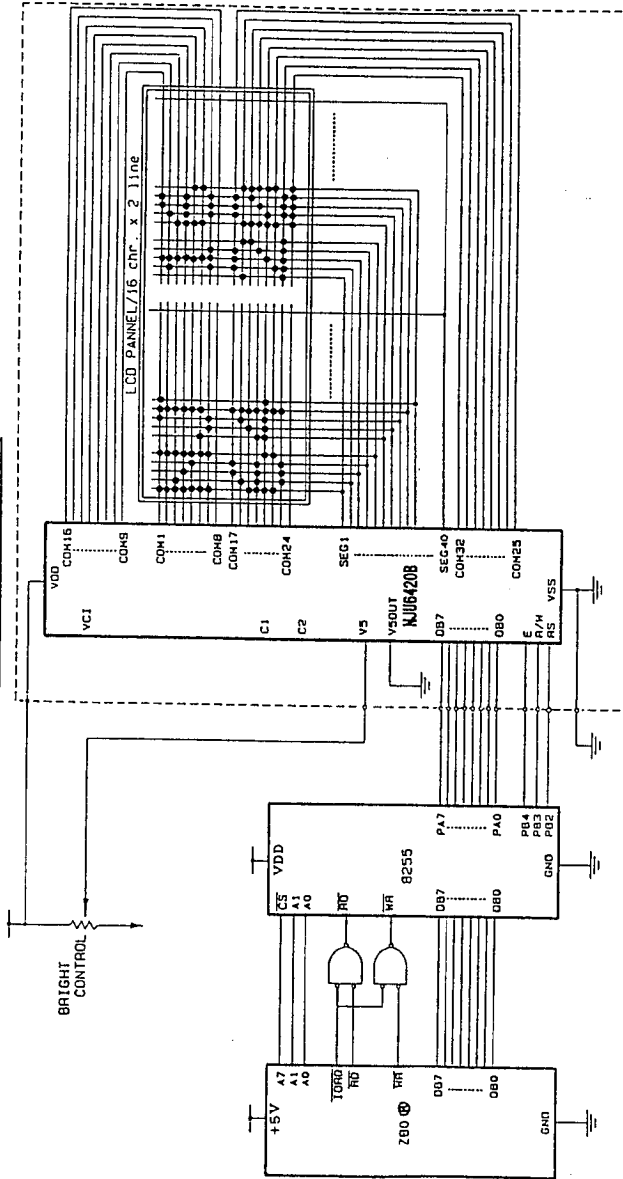
(b) 5 x 7 dots, 16-character 1-line display example (1/5 Bias, 1/16 Duty)



Z80® is trade mark of Zilog Inc.

(C) 8 bit MPU interface example (Single power supply operation, LCD driving voltage is generated by NJU6420B)

NJU6420 APPLICATION CIRCUITS



Z80[®] is trade mark of Zilog Inc.

(D) 8 bit MPU interface example (Dual power supply operation,
LCD driving voltage is supplied from external power supply)

MEMO

[CAUTION]

The specifications on this databook are only given for information, without any guarantee as regards either mistakes or omissions. The application circuits in this databook are described only to show representative usages of the product and not intended for the guarantee or permission of any right including the industrial rights.