

MT8872P REFERENCE KIT

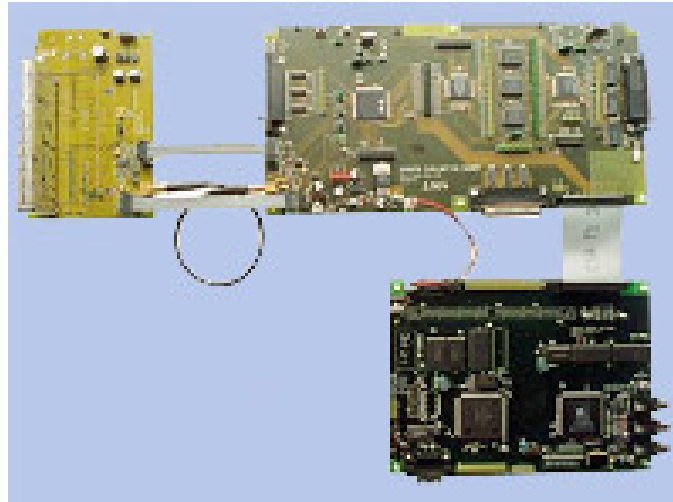
DVB-T PROFESSIONAL RECEIVER AND MEASUREMENT APPLICATIONS

APPLICATIONS

- Professional OFDM receivers

FEATURES

- MT8872P OFDM demodulator, MT8890P MPEG-2 decoder
- Real-time channel monitoring functions
- Graphical display of FFT
- Graphical display of constellation diagram
- Graphical display of pilot spectrum



MT8872P DVB-T Reference Kit

The MT8872 DVB-T Pro Reference Kit is a complete reference kit for building professional OFDM receivers. The kit is based on Microtune's professional MT8872P, a fully DVB-T compliant single-chip OFDM demodulator/FEC. The heart of the DVB-T Pro Reference Kit, the MT8872P incorporates all functions needed to generate an MPEG-2 transport stream out of the incoming analog baseband or 1st IF OFDM signal. This signal is internally sampled at a fixed frequency of the system clock divided by 3.

Channel tracking is done completely in the digital domain. The MT8872P has an internal 27 bit-wide "monitor bus" that outputs the data from several parts of the demodulator system at real-time speed. The MPEG-2 transport stream output is connected to the MT8890P reference board that decodes the MPEG-2 stream to video and audio. A PC running Windows 95/98™ controls the system.



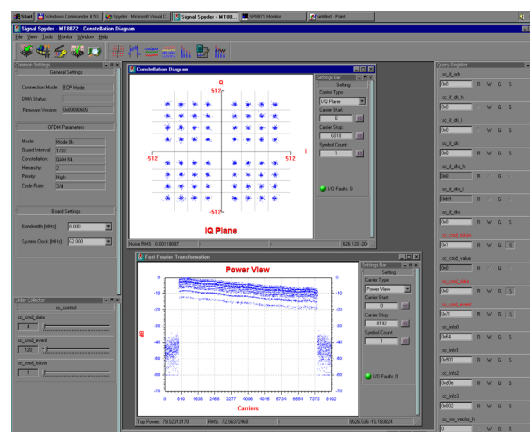
SPECIFICATIONS

OFDM SECTION

- Baseband or 1st IF analog input
- 10 bits digital input
- LVDS MPEG-2 transport stream connector
- TTL MPEG-2 transport stream output
- Parallel port interface
- Automatic frequency offset detection >500 kHz
- Supports 6 MHz, 7 MHz, and 8 MHz channel bandwidths

TUNER SECTION

- Input frequency range of 48 to 860 MHz
- Input impedance: 75 ohm
- I²C control



MT8872 DVB-T Pro Signal Monitoring Software

SIGNAL MONITORING SOFTWARE

- FFT output monitor
- Interpolated pilots monitor
- Constellation diagram monitor
- BER history (before Viterbi, after Viterbi, after Reed-Solomon)

MPEG-2 SECTION

- TTL MPEG transport stream input
- RS-232 connector for PC control
- Infrared control
- 422P@ML

Worldwide Headquarters • Microtune, Inc., 2201 Tenth Street, Plano, TX 75074, USA • Tel: +1-972-673-1600, Fax: +1-972-673-1602, E-mail: sales@microtune.com, Web site: www.microtune.com

For a detailed list of design centers, sales offices, and sales representatives, visit our Web site at www.microtune.com.

The information in this document is believed to be accurate and reliable. Microtune assumes no responsibility for any consequences arising from the use of this information, nor from any infringement of patents or the rights of third parties which may result from its use. No license is granted by implication or otherwise under any patent or other rights of Microtune. The information in this publication replaces and supersedes all information previously supplied, and is subject to change without notice. The customer is responsible for assuring that proper design and operating safeguards are observed to minimize inherent and procedural hazards. Microtune assumes no responsibility for applications assistance or customer product design.

The devices described in this document are not authorized for use in medical, life-support equipment, or any other application involving a potential risk of severe property or environmental damage, personal injury, or death without prior express written approval of Microtune. Any such use is understood to be entirely at the user's risk.

Microtune, MicroTuner, MicroStreamer, VideoCaster, and the Microtune logo are trademarks of Microtune, Inc. All other trademarks belong to their respective companies.

Microtune's products are protected by one or more of the following U.S. patents: 5,625,325; 5,648,744; 5,717,730; 5,737,035; 5,739,730; 5,805,988; 5,847,612; 6,100,761; 6,104,242; 6,144,402; 6,163,684; 6,169,569; 6,177,964; 6,218,899 and additional patents pending or filed.

Entire contents Copyright © 2002 Microtune, Inc.

