



www.DataSheet4U.com

SPN30 Series

30 WATT, Universal Input Fully Enclosed Switching Power Supply



FEATURES

- ✔ 30 WATT OUTPUT POWER
- ✔ UNIVERSAL INPUT
- ✔ OVERVOLTAGE PROTECTION
- ✔ OVERCURRENT PROTECTION
- ✔ LIGHTWEIGHT CONSTRUCTION
- ✔ METAL CHASSIS WITH COVER
- ✔ COMPACT, LOW-PROFILE PACKAGES
- ✔ 3 YEAR WARRANTY

SAFETIES/APPROVALS

FCC-B
EN 55022-B
VCCI-II

ELECTRICAL SPECIFICATIONS

All specifications are typical at nominal input, full load

INPUT SPECIFICATIONS

Input Voltage.....85 ~ 264VAC
 Input Frequency.....47 ~ 63Hz
 Input Current.....0.55 ~ 1.0A Typ.
 Inrush Current.....16A ~ 39A Typ

OUTPUT SPECIFICATIONS

Output Voltage.....See Chart
 Voltage Adjustment.....±10%
 Minimum Load.....±10%
 Efficiency.....75 ~ 80%
 Over-Voltage Protection.....115 ~ 150% Manual Reset
 Over-Current Protection.....Automatic Recovery (105% min)
 Ripple and Noise.....100mVp-p max.
 Hold-Up Time.....40 ~ 50 mS
 Line/Load Regulation.....See Chart
 Rise Time.....800 ~ 1700 mS
 Leakage Current (100/230VAC).....0.75mA

GENERAL SPECIFICATIONS

MTBF.....>160,000 Hours
 Isolation Voltage
 Primary to Secondary.....3000VAC
 Primary to Case.....1500VAC
 Secondary to Case.....500VAC
 Isolation Resistance.....100 M-Ohms min.

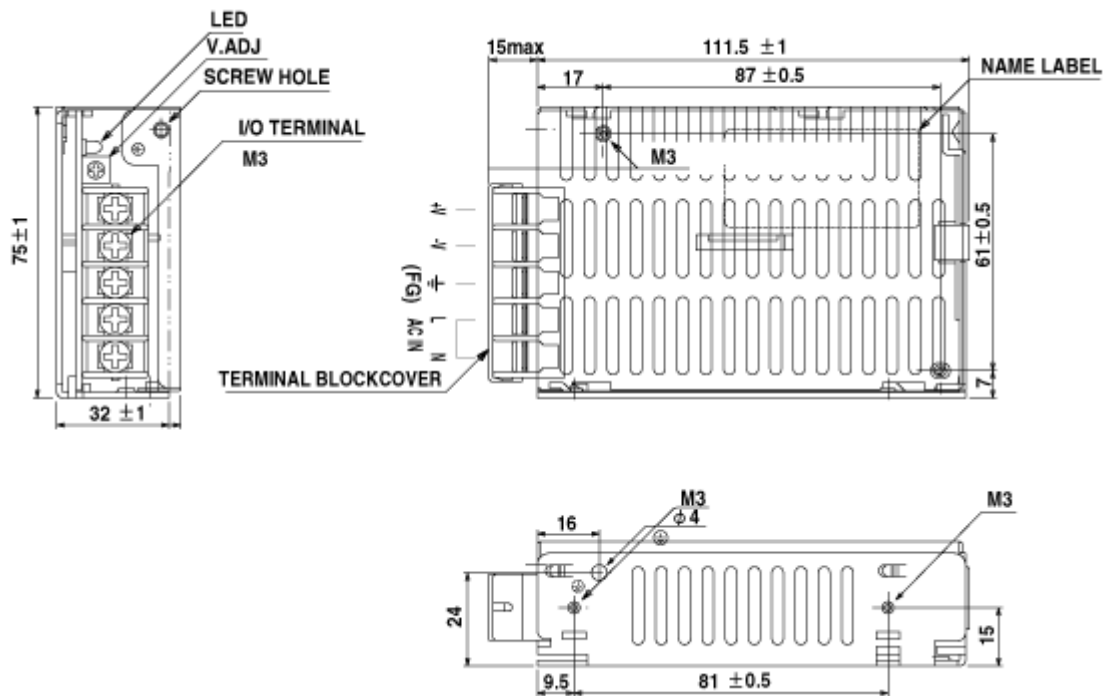
ENVIRONMENTAL SPECIFICATIONS

Operating Temperature.....0°C ~ +60°C
 Cooling.....Convection
 Temperature Coefficient.....0.02% / °C
 Humidity.....20 ~ 85%Rh (non-condensing)
 Storage Temperature.....-20°C ~ +85°C
 Shock Vibration.....Shock: 20G(3 Directions each 3 times)
 Vibration: 10 ~ 55Hz

PHYSICAL SPECIFICATIONS

Metal Enclosed – Terminal Block

MODEL	Output Voltage	Output Current (85 ~ 264 VAC)	Efficiency (%)	Load Regulation (mV max)
SPN30-05S	5VDC	6.0A	75%	10mV max
SPN30-12S	12VDC	2.6A	78%	10mV max
SPN30-15S	15VDC	2.1A	79%	10mV max
SPN30-24S	24VDC	1.4A	80%	20mV max
SPN30-48S	48VDC	0.7A	80%	40mV max



Note:

- Mounting screws not to exceed max penetration of 6mm
- Screw thread size is M3 (Metric) or 6/32nd (Inch)
- Weight 200g typ.
- Measurements in millimeter (mm) unless otherwise specified
- Tolerance ± 1 mm

NOTE:

All specifications typical and nominal / full load and 25°C unless otherwise noted.
 Avoid sustained operation in overload or dead short conditions.
 Specifications subject to changes without notice.