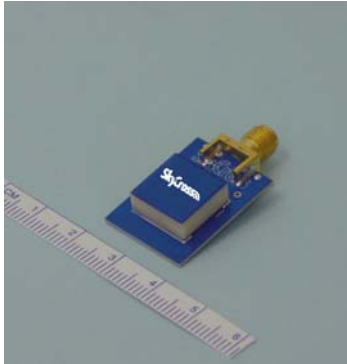


## 5.25 GHz Surface Mountable WLAN Monopole Antenna for 802.11a and HiperLAN2 Wireless Applications



### Features

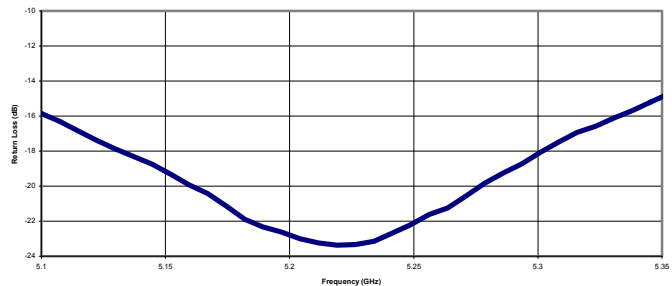
- *Very Efficient MLA Technology*
- *U-NII/HiperLAN2 Band*
- *Omni-Directional Pattern*
- *Peak Gain +2 dBi Minimum*
- *Low Profile for Embedded Applications*

This 5.25 GHz WLAN antenna is designed using SkyCross' patented MLA technology, providing superior efficiency and gain directivity in a small package. This antenna is the best performance solution for developers implementing high data rate WLANs in the upper frequency bands.

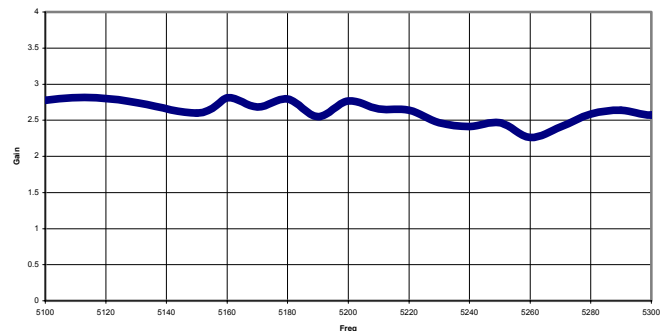
### Electrical Specifications

Frequency Range	5150 — 5350 MHz
Gain	2 dBi Minimum Peak Across Band
VSWR	< 2.0:1
Polarization	Linear
Radiation Pattern	Azimuthal Omni-directional
Feed Impedance	50 Ohms Unbalanced

### Typical Return Loss



### Swept Gain

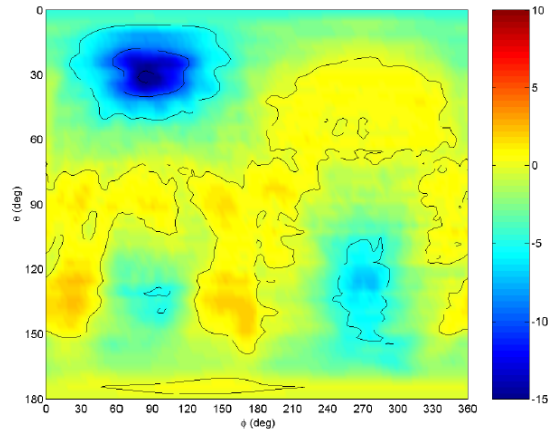


### Mechanical Specifications

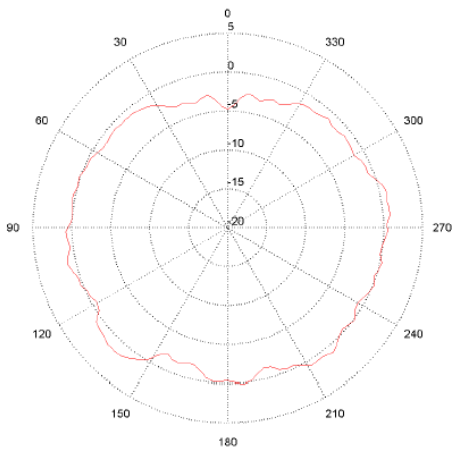
Size	0.5 x 0.5 x 0.2 inches 13 x 13 x 5.2 mm
Weight	2.0 g*

\*weight does not include ground plane or connector

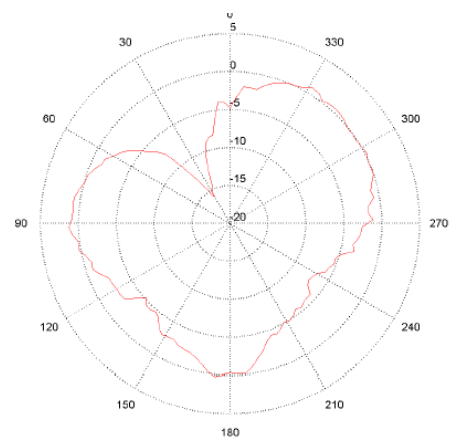
**Spherical Gain Contour Map**



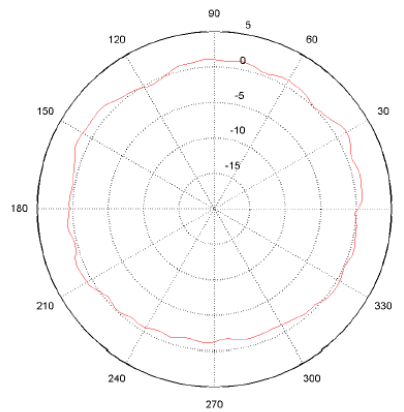
**Typical Gain Pattern**



Elevation Cut  
 Phi = 0 degrees

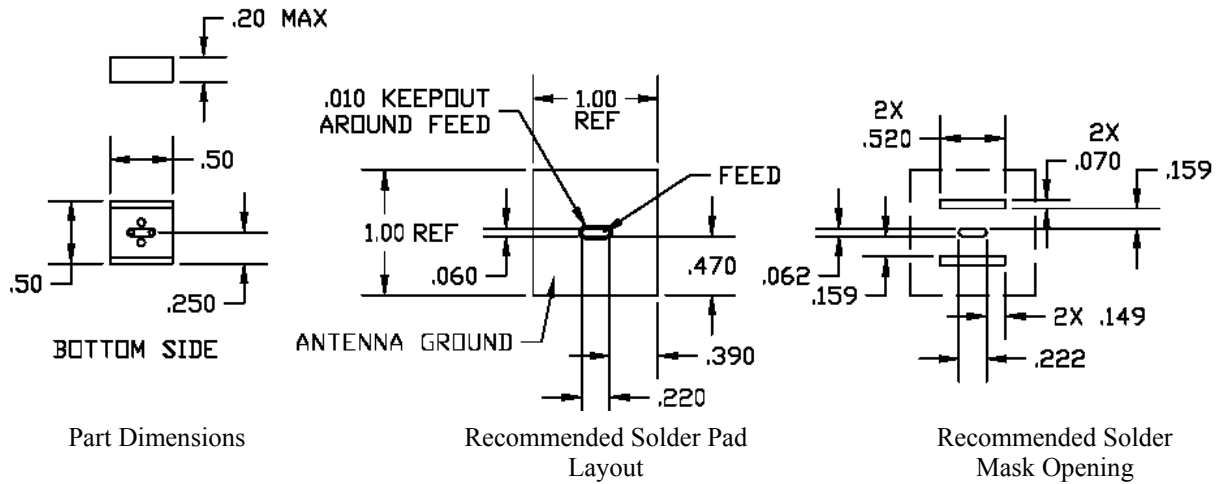


Elevation Cut  
 Phi = 90 degrees



Azimuthal Cut  
 Theta = 90 degrees

### SMT-5250-M Footprint Details



2 Place Dim	3 Place Dim	Angular
XX $\pm .01$	XXX $\pm .005$	$\pm .05$