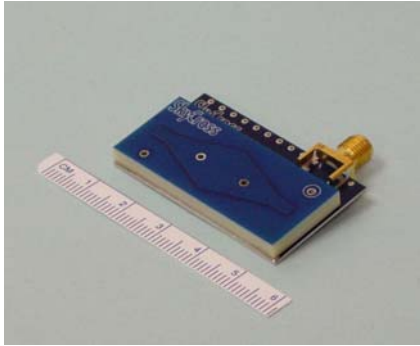


## 2.45 GHz Surface-mountable Loop Antenna for High Data Rate WLAN Applications



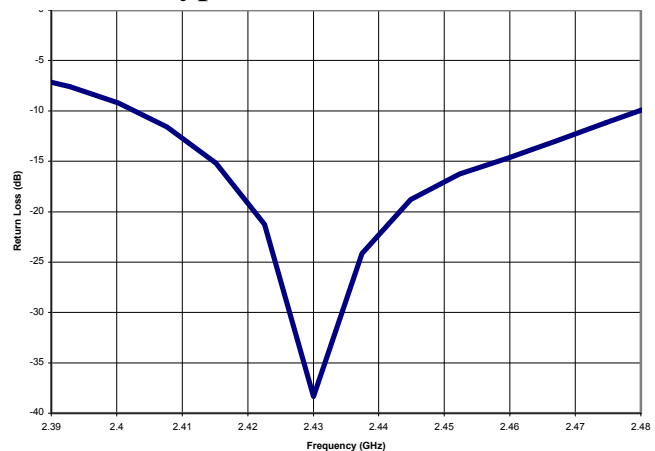
### Features

- *Very Efficient MLA Technology*
- *ISM Band*
- *Uni-directional Pattern*
- *Peak Gain + 2.55 dBi*
- *Low Profile for Embedded Applications*

This compact Wireless LAN antenna covers the 2.45 GHz frequency band, encompassing frequency allocations for IEEE 802.11b and Bluetooth standards. Using SkyCross' patented MLA technology, this antenna provides superior efficiency and gain directivity in a small package. This antenna is the best performance solution for developers implementing high data rate WLANs in the 2.45 GHz frequency band.

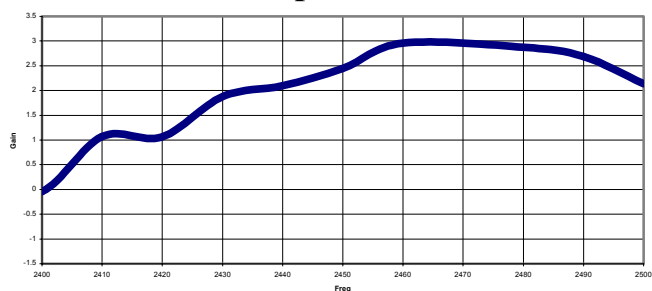
Electrical Specifications	
Frequency Range	2400 — 2500 MHz
Gain	2.55 dBi Peak
VSWR	< 2:1
Polarization	Linear
Elevation Pattern	Uni-directional
Feed Impedance	50 Ohms Unbalanced

### Typical Return Loss

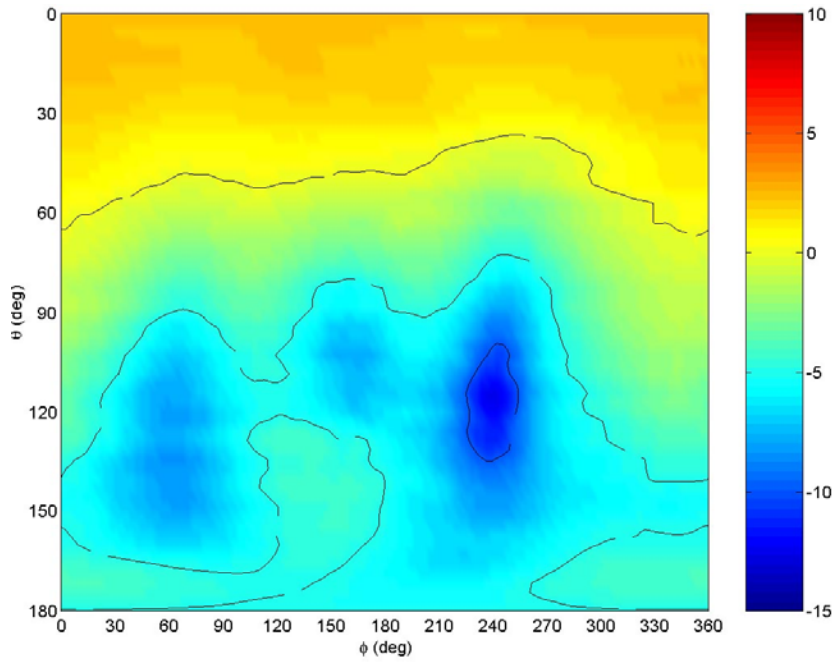


Mechanical Specifications	
Size	1.8 x 0.8 x 0.14 inches 45.7 x 20.3 x 3.56 mm
Weight	8.9 g*
*weight includes connector	

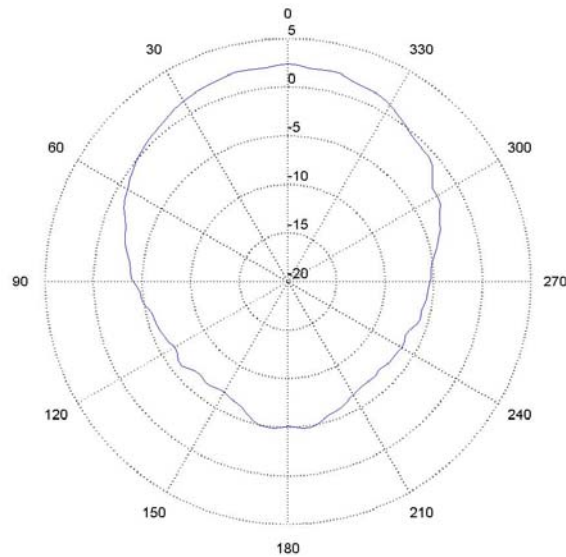
### Swept Gain



## Spherical Gain Contour Map at 2.45 GHz

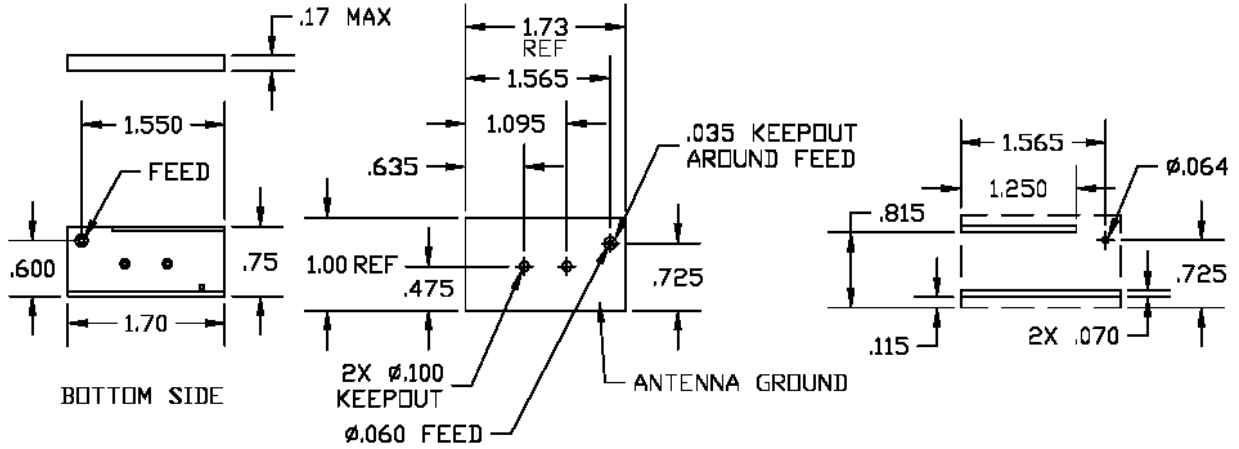


## Typical Gain Pattern at 2.45 GHz



Phi = 90 degrees

### SMT-2450-U Footprint Details



Part Dimensions

Recommended Solder Pad  
 Layout

Recommended Solder  
 Mask Opening

2 Place Dim    3 Place Dim    Angular

XX ±.01      XXX ±.005      ±.05