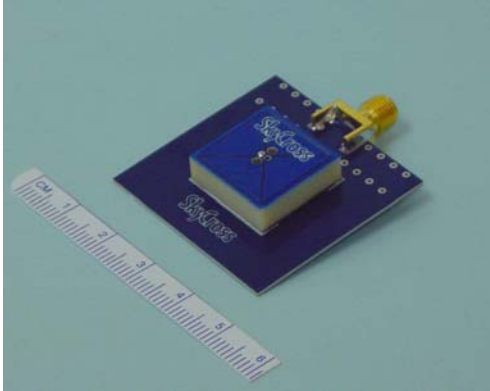


## 2.45 GHz Surface Mountable WLAN Monopole Antenna for 802.11b and Bluetooth Wireless Applications



### Features

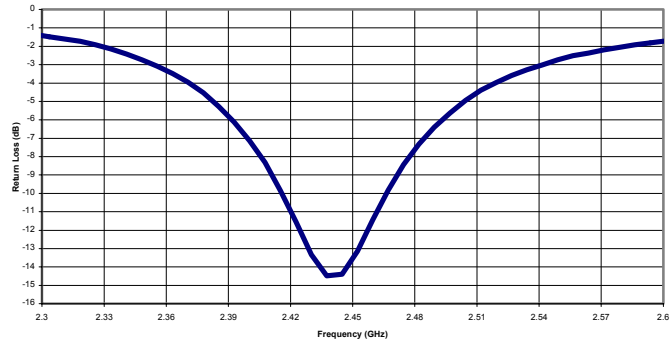
- *Very Efficient MLA Technology*
- *ISM Band*
- *Omni-Directional Pattern*
- *Low Profile for Embedded Applications*

This 2.45 GHz WLAN antenna is designed using SkyCross' patented MLA technology, providing superior efficiency and gain directivity in a small package. This antenna is the best performance solution for developers requiring an omni-directional beam pattern in WLAN applications.

### Electrical Specifications

Frequency Range	2.4 — 2.5 GHz
Gain	0 dBi Peak
VSWR	< 3.0:1
Polarization	Linear
Radiation Pattern	Azimuthal Omni-directional
Feed Impedance	50 Ohms Unbalanced

### Typical Return Loss

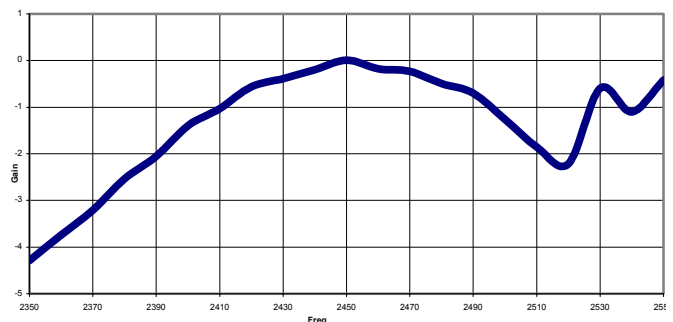


### Mechanical Specifications

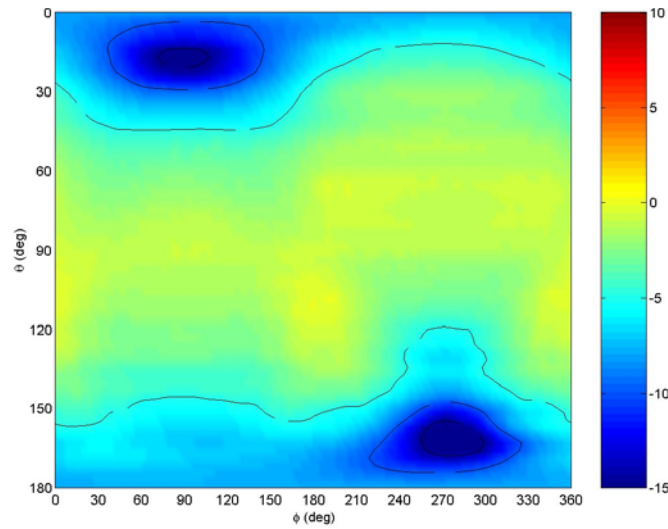
Size	0.73 x 0.73 x 0.2 in 18.5 x 18.5 x 5.1 mm
Weight*	4.0 g

\*weight does not include ground plane or connector

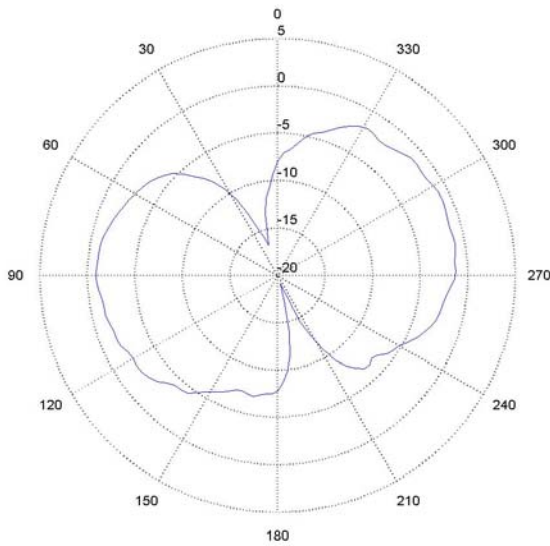
### Swept Gain



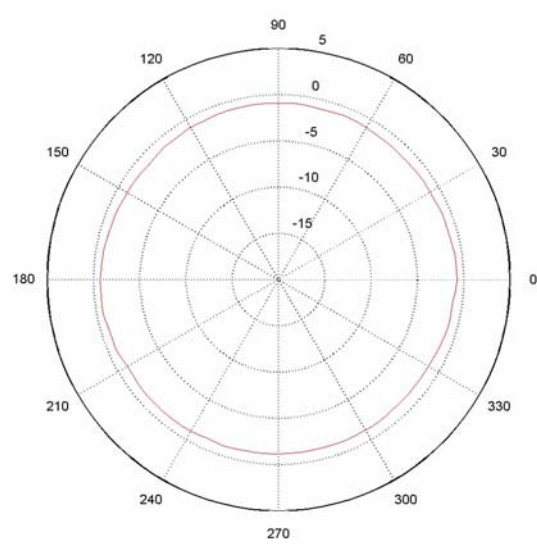
### Spherical Gain Contour Map at 2.45 GHz



### Typical Gain Pattern at 2.45 GHz

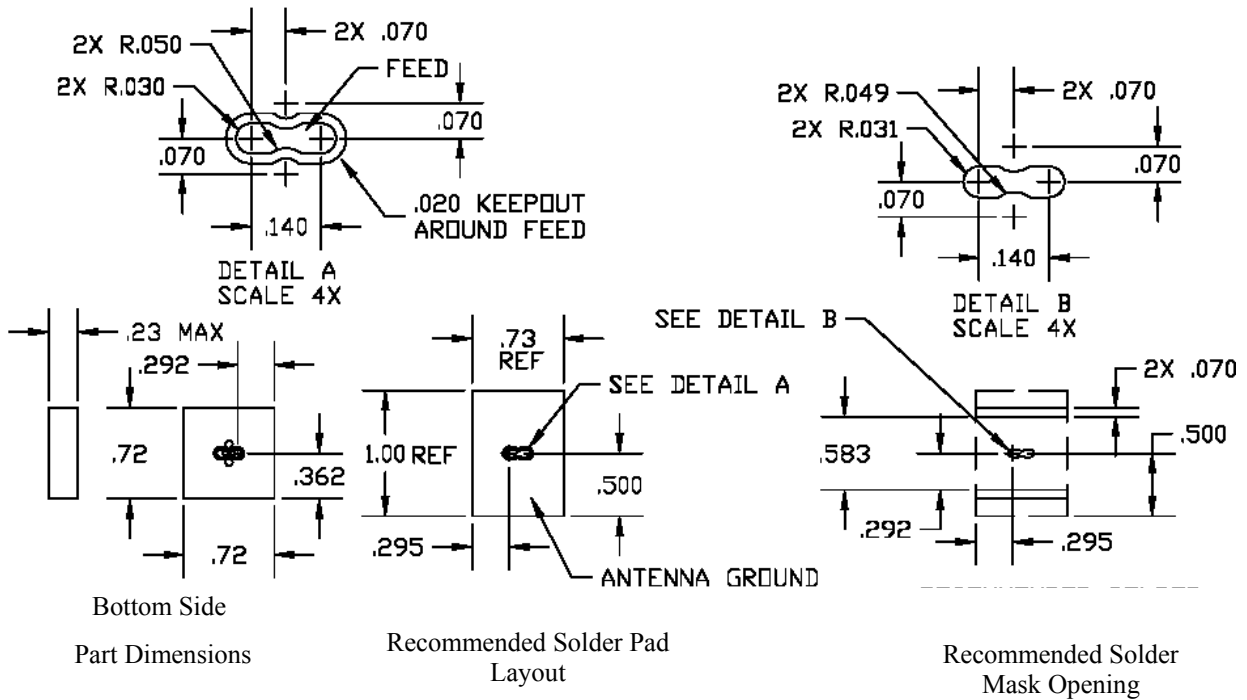


Elevation Cut  
 Phi = 90 degrees



Elevation Cut  
 Theta = 90 degrees

### SMT-2450-M Footprint Details



2 Place Dim    3 Place Dim    Angular

XX ±.01    XXX ±.005    ±.05

© 2002 SkyCross, Inc. SkyCross is a trademark of SkyCross, Inc. All rights reserved. Protected by one or more US Patents, including No. 5,790,080. Additional US and Foreign patents pending. Specifications subject to change without notice.

For information regarding SkyCross Inc. and its products, see website at [www.skycross.com](http://www.skycross.com), email [info@skycross.com](mailto:info@skycross.com) or call 321-308-6600