

TOSHIBA Field Effect Transistor Silicon P Channel MOS Type (U-MOSII)

SSM3J14T

Power Management Switch
DC-DC Converters

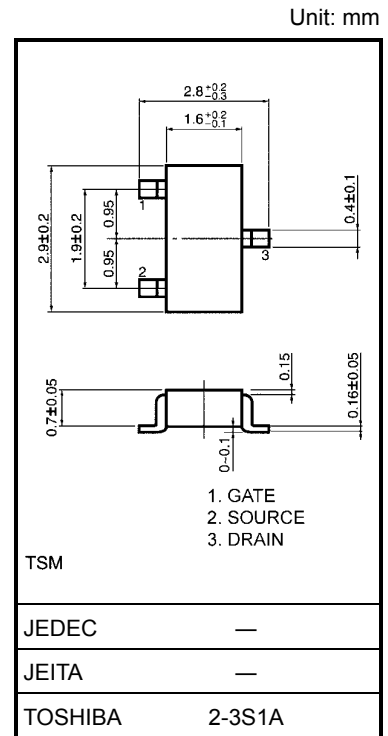
- Suitable for high-density mounting due to compact package
- Low on Resistance: $R_{on} = 145 \text{ m}\Omega$ (max) (@ $V_{GS} = -4.5 \text{ V}$)
: $R_{on} = 85 \text{ m}\Omega$ (max) (@ $V_{GS} = -10 \text{ V}$)
- High-speed switching

Maximum Ratings (Ta = 25°C)

Characteristics	Symbol	Rating	Unit
Drain-Source voltage	V_{DS}	-30	V
Gate-Source voltage	V_{GSS}	± 20	V
Drain current	DC	I_D	-2.7
	Pulse	I_{DP} (Note 2)	-5.4
Drain power dissipation	P_D	$t = 10 \text{ s}$	1.25
		(Note 1)	0.7
Channel temperature	T_{ch}	150	°C
Storage temperature range	T_{stg}	-55 to 150	°C

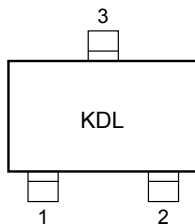
Note 1: Mounted on FR4 board
(25.4 mm × 25.4 mm × 1.6 t, Cu pad: 645 mm²)

Note 2: The pulse width limited by maximum channel temperature.

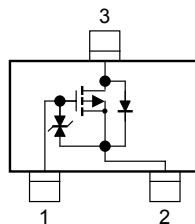


Weight: 10 mg (typ.)

Marking



Equivalent Circuit



Handling Precaution

When handling individual devices (which are not yet mounted on a circuit board), be sure that the environment is protected against electrostatic electricity. Operators should wear anti-static clothing, and containers and other objects that come into direct contact with devices should be made of anti-static materials.

The Channel-to-Ambient thermal resistance $R_{th(ch-a)}$ and the drain power dissipation P_D vary according to the board material, board area, board thickness and pad area, and are also affected by the environment in which the product is used. When using this device, please take heat dissipation fully into account

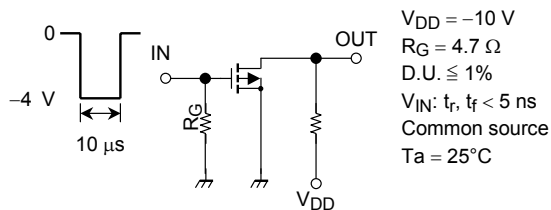
Electrical Characteristics (Ta = 25°C)

Characteristic	Symbol	Test Condition	Min	Typ.	Max	Unit
Gate leakage current	I_{GSS}	$V_{GS} = \pm 16\text{ V}, V_{DS} = 0$	—	—	± 1	μA
Drain-source breakdown voltage	$V_{(BR)DSS}$	$I_D = -1\text{ mA}, V_{GS} = 0$	-30	—	—	V
	$V_{(BR)DSX}$	$I_D = -1\text{ mA}, V_{GS} = 20\text{ V}$	-15	—	—	V
Drain cut-off current	I_{DSS}	$V_{DS} = -30\text{ V}, V_{GS} = 0$	—	—	-1	μA
Gate threshold voltage	V_{th}	$V_{DS} = -5\text{ V}, I_D = -0.1\text{ mA}$	-0.8	—	-2.0	V
Forward transfer admittance	$ Y_{fs} $	$V_{DS} = -5\text{ V}, I_D = -1.35\text{ A}$ (Note 3)	2.0	—	—	S
Drain-source on resistance	$R_{DS(ON)}$	$I_D = -1.35\text{ A}, V_{GS} = -10\text{ V}$ (Note 3)	—	63	85	m Ω
		$I_D = -1.35\text{ A}, V_{GS} = -4.5\text{ V}$ (Note 3)	—	106	145	
		$I_D = -1.35\text{ A}, V_{GS} = -4.0\text{ V}$ (Note 3)	—	120	170	
Input capacitance	C_{iss}	$V_{DS} = -15\text{ V}, V_{GS} = 0, f = 1\text{ MHz}$	—	413	—	pF
Reverse transfer capacitance	C_{rss}	$V_{DS} = -15\text{ V}, V_{GS} = 0, f = 1\text{ MHz}$	—	77	—	pF
Output capacitance	C_{oss}	$V_{DS} = -15\text{ V}, V_{GS} = 0, f = 1\text{ MHz}$	—	113	—	pF
Switching time	Turn-on time	t_{on}	$V_{DD} = -15\text{ V}, I_D = -1\text{ A}$		—	ns
	Turn-off time	t_{off}	$V_{GS} = 0 \sim -4\text{ V}, R_G = 10\ \Omega$		—	

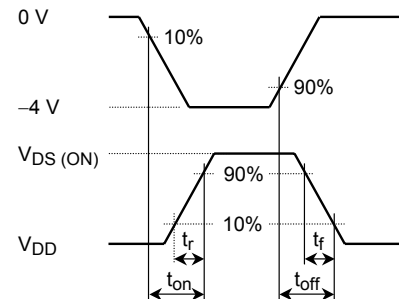
Note 3: Pulse test

Switching Time Test Circuit

(a) Test circuit



(b) V_{IN}



(c) V_{OUT}

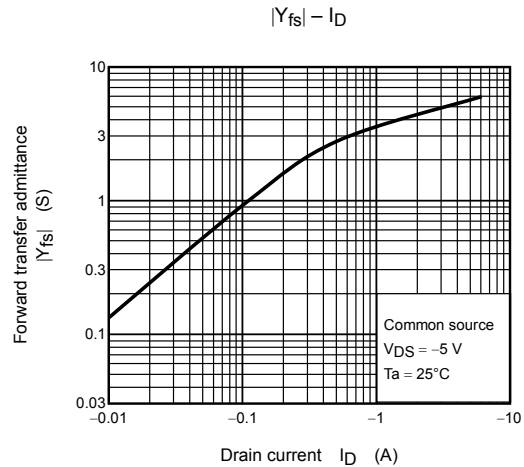
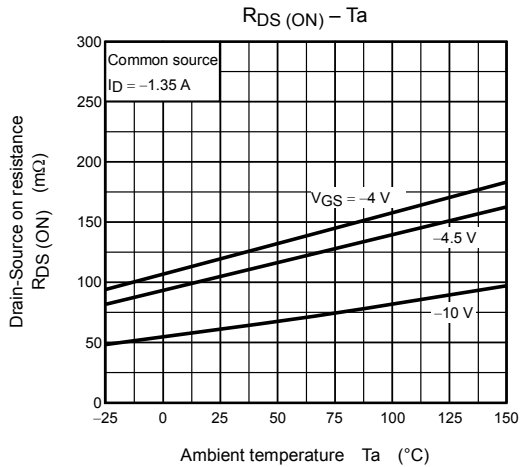
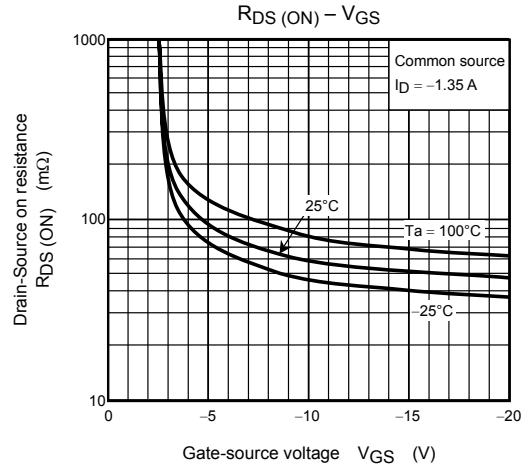
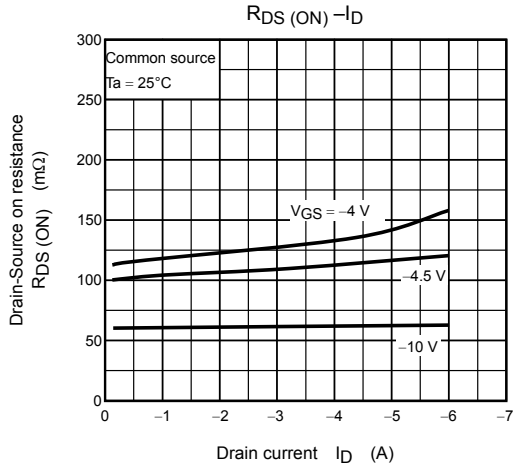
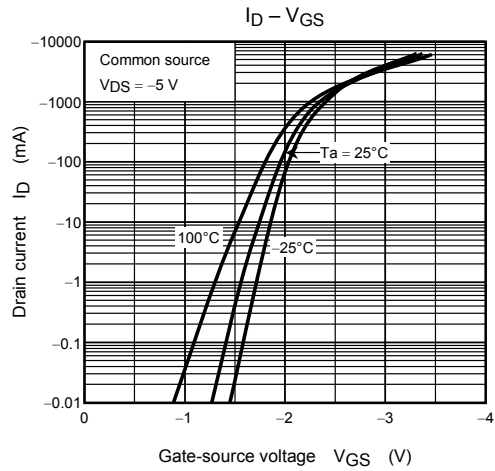
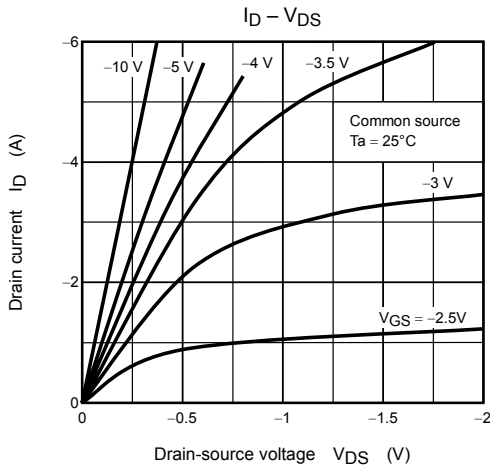
Precaution

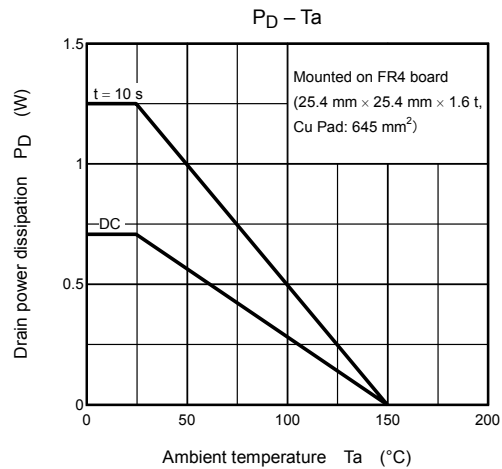
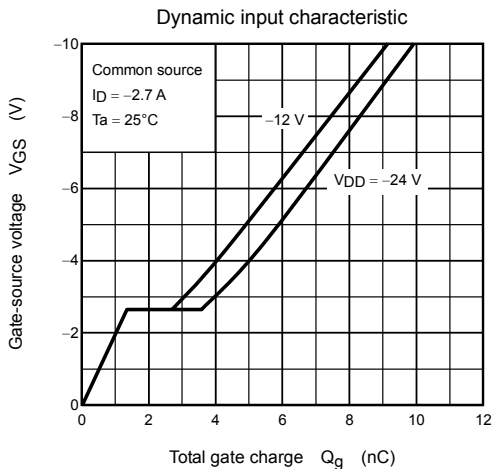
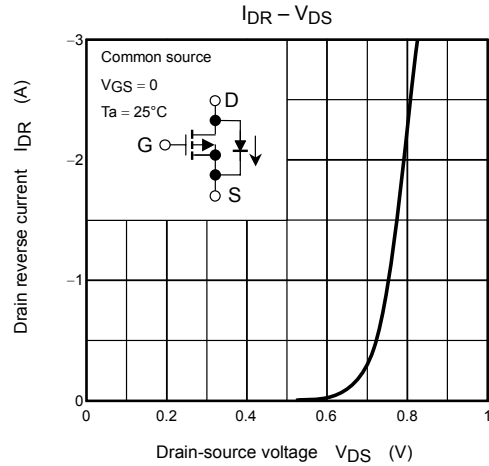
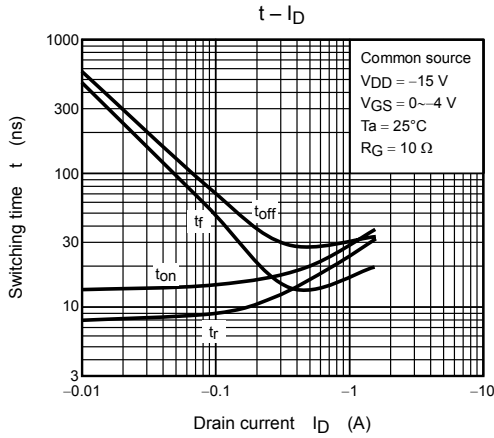
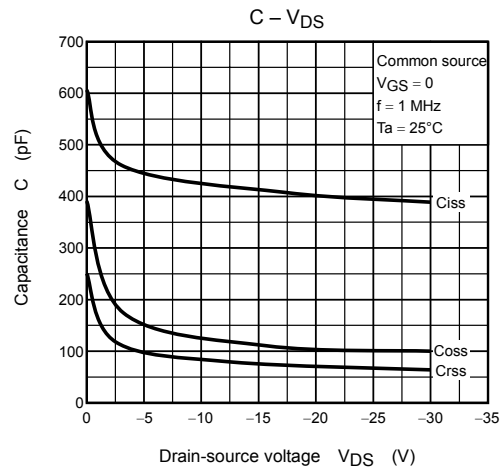
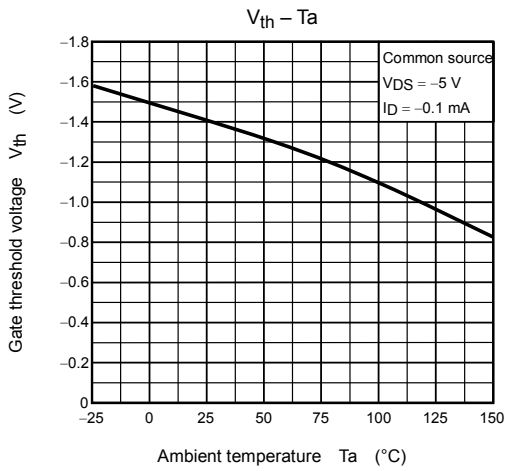
V_{th} can be expressed as voltage between gate and source when low operating current value is $I_D = -100\ \mu\text{A}$ for this product. For normal switching operation, $V_{GS(ON)}$ requires higher voltage than V_{th} and $V_{GS(OFF)}$ requires lower voltage than V_{th} .

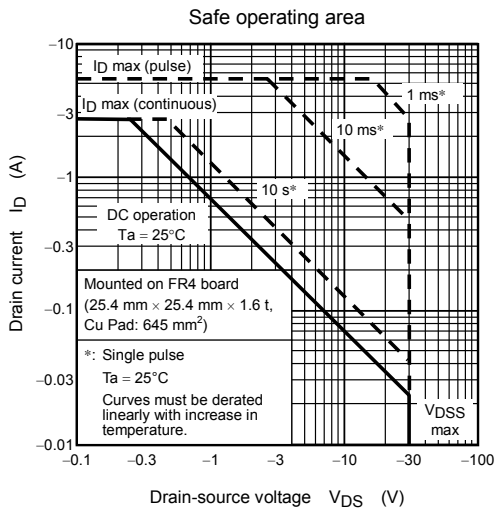
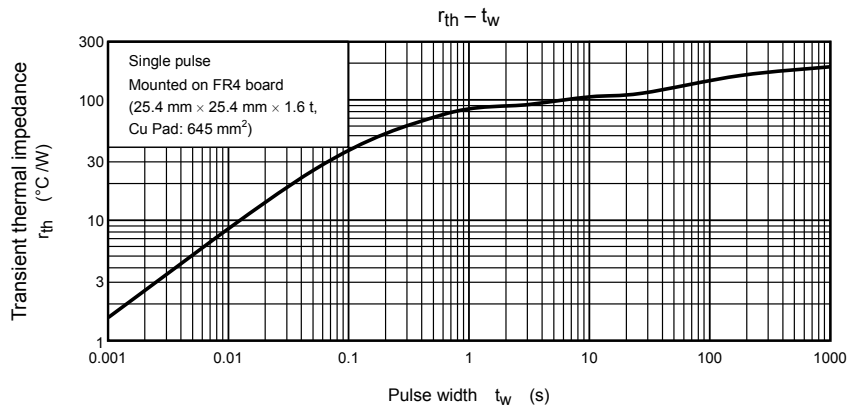
(relationship can be established as follows: $V_{GS(OFF)} < V_{th} < V_{GS(ON)}$)

Please take this into consideration for using the device.

V_{GS} recommended voltage of -4 V or higher to turn on this product.







RESTRICTIONS ON PRODUCT USE

000707EAA

- TOSHIBA is continually working to improve the quality and reliability of its products. Nevertheless, semiconductor devices in general can malfunction or fail due to their inherent electrical sensitivity and vulnerability to physical stress. It is the responsibility of the buyer, when utilizing TOSHIBA products, to comply with the standards of safety in making a safe design for the entire system, and to avoid situations in which a malfunction or failure of such TOSHIBA products could cause loss of human life, bodily injury or damage to property.
In developing your designs, please ensure that TOSHIBA products are used within specified operating ranges as set forth in the most recent TOSHIBA products specifications. Also, please keep in mind the precautions and conditions set forth in the "Handling Guide for Semiconductor Devices," or "TOSHIBA Semiconductor Reliability Handbook" etc..
- The TOSHIBA products listed in this document are intended for usage in general electronics applications (computer, personal equipment, office equipment, measuring equipment, industrial robotics, domestic appliances, etc.). These TOSHIBA products are neither intended nor warranted for usage in equipment that requires extraordinarily high quality and/or reliability or a malfunction or failure of which may cause loss of human life or bodily injury ("Unintended Usage"). Unintended Usage include atomic energy control instruments, airplane or spaceship instruments, transportation instruments, traffic signal instruments, combustion control instruments, medical instruments, all types of safety devices, etc.. Unintended Usage of TOSHIBA products listed in this document shall be made at the customer's own risk.
- The information contained herein is presented only as a guide for the applications of our products. No responsibility is assumed by TOSHIBA CORPORATION for any infringements of intellectual property or other rights of the third parties which may result from its use. No license is granted by implication or otherwise under any intellectual property or other rights of TOSHIBA CORPORATION or others.
- The information contained herein is subject to change without notice.