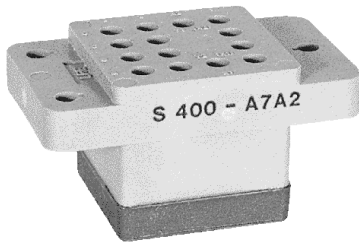


# ENGINEERING DATA SHEET

# S400, S401, S402

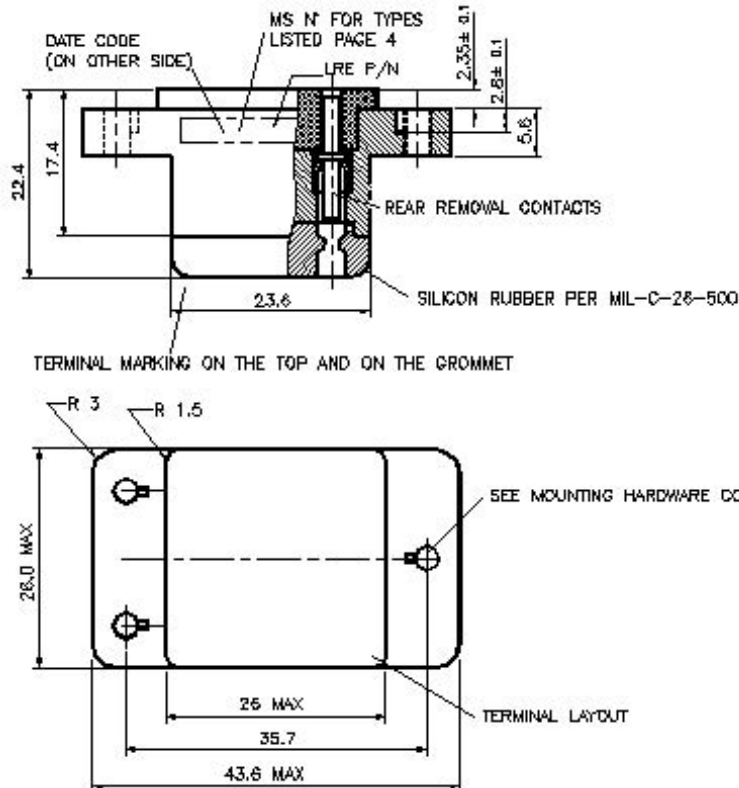
SOCKET FOR RELAYS

10 AMP



BASIC SOCKET SERIES DESIGNATION FOR:

**Series M400 (DC Coil), M401 (AC Coil),  
M402 (DC Coil), FLS402, T402, T412, T441, VS400, CS400**



## GENERAL CHARACTERISTICS

Crimp tool contact	M 22520/1-01 with turret M 22520/1-02 or MS 3191-1.
Insertion and extraction tool	NAS 1664-16.
Weight	35g max.
Temperature range	-70° C to +125° C.

This connection is designed to the standards and requirements of MIL-S-12883  
Contacts and hardware to be delivered disassembled in a plastic bag.  
Tolerances, unless otherwise specified, ±0.25mm.



Featuring **LEACH®** power and control solutions  
www.esterline.com

**AMERICAS**  
6900 Orangethorpe Ave.  
P.O. Box 5032  
Buena Park, CA 90622

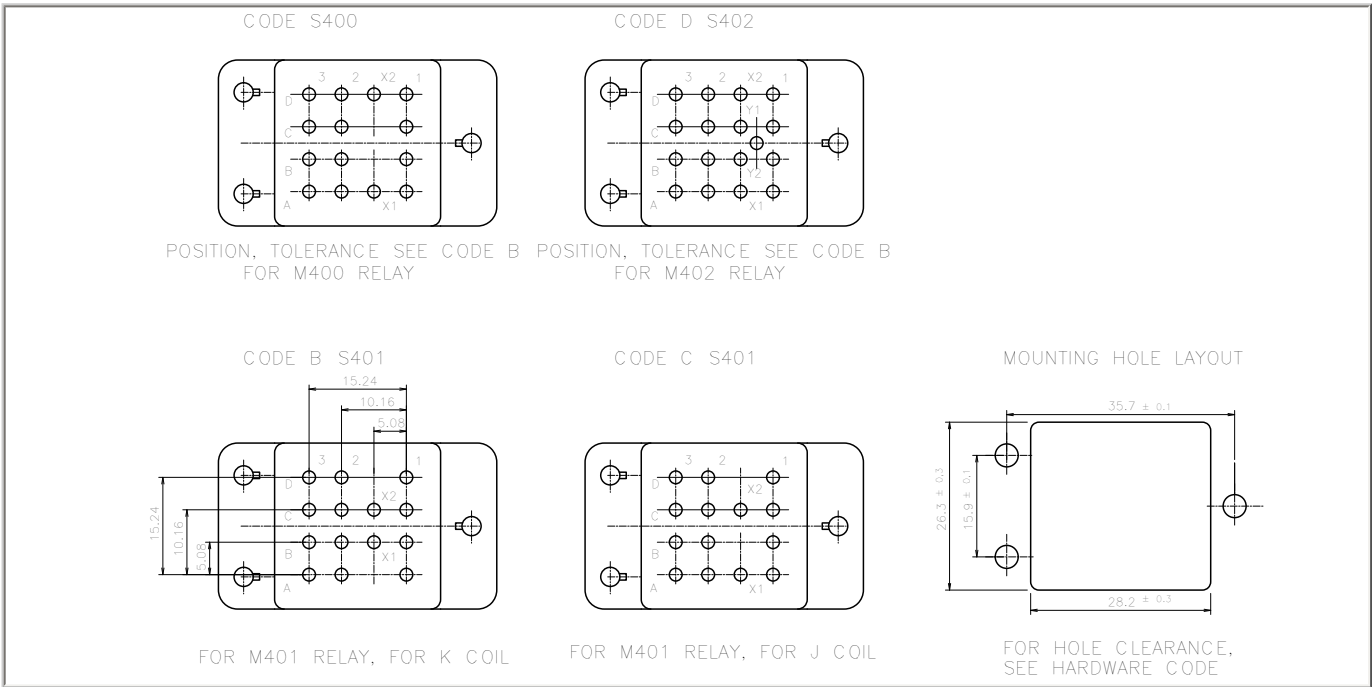
Tel: (01) 714-736-7599  
Fax: (01) 714-670-1145

**EUROPE**  
2 Rue Goethe  
57430 Sarralbe  
France

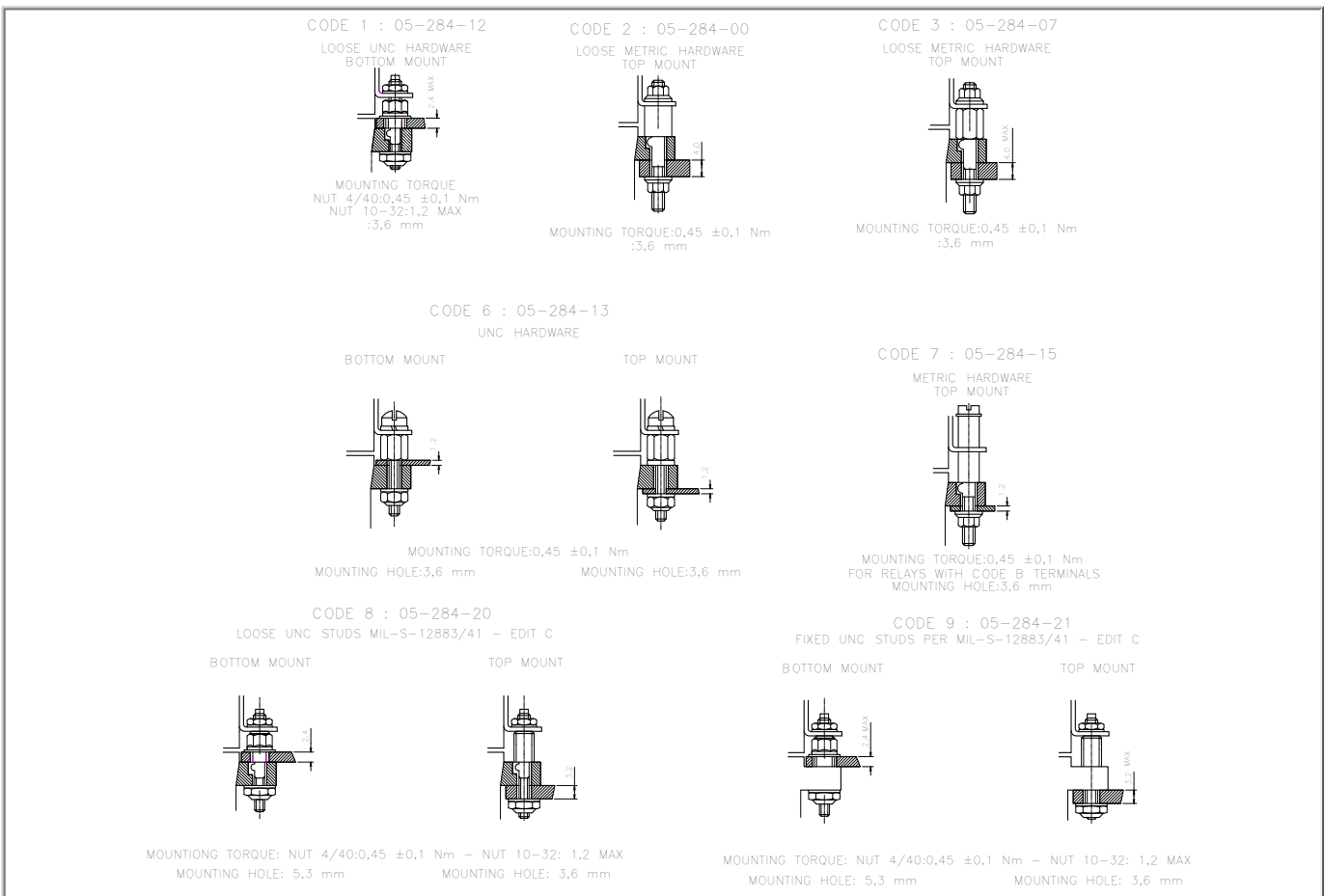
Tel: (33) 3 87 97 31 01  
Fax: (33) 3 87 97 96 86

**ASIA**  
Units 602-603 6/F Lakeside 1  
No.8 Science Park West Avenue  
Phase Two, Hong Kong Science Park  
Pak Shek Kok, Tai Po, N.T.  
Hong Kong  
Tel: (852) 2 191 3830  
Fax: (852) 2 389 5803

Data sheets are for initial product selection and comparison. Contact Esterline Power Systems prior to choosing a component.



MOUNTING HARDWARE





**MS/LRE CROSS PART NO. AND MATING RELAYS**

**S400, S401, S402**

	<b>MS - Number</b>	<b>LEACH P/N</b>	<b>Contacts to accomodate wire #</b>		<b>Applicable for relays</b>
<b>MIL-S-12883/40</b>	-01	S400-A6A2	16-18-20	Loose terminals Above/below panel mounting	M400-D4A /-L/-N/-B/-C
	-05	S400-A6B3	20-22-24		M 401-D4F/-K
	-02	S401-B6A2	16-18-20		N/A
	-03	N/A	N/A		M 401-D4E/-J
	-04	S401-C6A2	16-18-20		
	<b>MS - Number</b>	<b>LEACH P/N</b>	<b>Contacts to accomodate wire #</b>		<b>Applicable for relays</b>
<b>MIL-S-12883/40B</b>	-13	S400-A1A2	16-18-20	Loose terminals below panel mounting	M400-D4A /-L/-N/-B/-C
	-17	S400-A1B3	20-22-24		M 401-D4F/-K
	-14	S401-B1A2	16-18-20		M 401-D4E/-J
	-16	S401-C1A2	16-18-20		
	<b>MS - Number</b>	<b>LEACH P/N</b>	<b>Contacts to accomodate wire #</b>		<b>Applicable for relays</b>
<b>MIL-S-12883/40C</b>	-13S	S400-A8A8	16-18-20	Loose terminals Above/below panel mounting	M400-D4A /-L/-N/-B/-C
	-17S	S400-A8B9	20-22-24		M401-D4F/-K
	-14S	S401-B8A8	16-18-20		M401-D4E/-J
	to be determined	S401-C8A8	16-18-20		M402-D4A/ -L/-N/-B/-C
	-18S	S402-D8A8	16-18-20		
<b>MIL-S-12883/40C</b>	-19S	S400-A9A8	16-18-20	Fixed terminals Above/below panel mounting	M400-D4A /-L/-N/-B/-C
	-23S	S400-A9B9	20-22-24		M 401-D4F/-K
	-20S	S401-B9A8	16-18-20		M 401-D4E/-J
	to be determined	S401-C9A8	16-18-20		M 402-D4A/ -L/-N/-B/-C
	-24S	S402-D9A8	16-18-20		