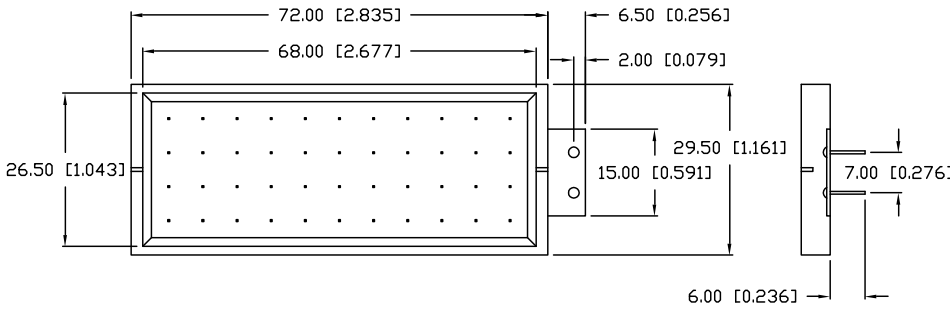


UNCONTROLLED DOCUMENT

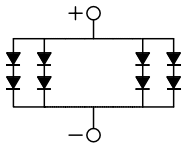
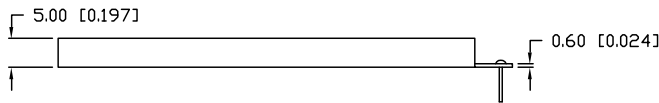
PART NUMBER
SSB-COB6827AW

REV.

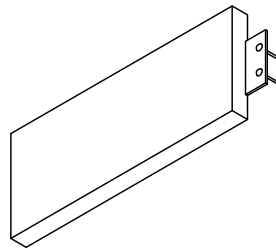


ELECTRO-OPTICAL CHARACTERISTICS $T_A=25^{\circ}\text{C}$ PER CHIP $I_f=20\text{ mA}$

PARAMETER	MIN	TYP	MAX	UNITS	TEST COND
PEAK WAVELENGTH		605 (AMBER)		nm	
FORWARD VOLTAGE		4.0		V_f	
REVERSE VOLTAGE	8			V_r	$V_r=100\mu\text{A}$
LUMINOUS INTENSITY		250		cd/m^2	$I_f=100\text{mA}$
EMITTED COLOR:	AMBER				
REFLECTOR FINISH:	WHITE DIFFUSED				



22 STRINGS OF 2
DIODES IN SERIES
(4 STRINGS SHOWN)



LIMITS OF SAFE OPERATION AT 25°C PER CHIP

PARAMETER	MAX	UNITS
PEAK FORWARD CURRENT *	550	mA
STEADY CURRENT	440	mA
POWER DISSIPATION	2.5	W
DERATE FROM 25°C	62	$\text{mW}/^{\circ}\text{C}$
OPERATING TEMP.	-40 TO +85	$^{\circ}\text{C}$
STORAGE TEMP.	-40 TO +85	$^{\circ}\text{C}$
SOLDERING TEMP.	+260	$^{\circ}\text{C}$
2.0mm FROM BODY		3 SEC. MAX

* $t < 10\mu\text{s}$



NOTES:

1.

*UNLESS OTHERWISE SPECIFIED TOLERANCES PER DECIMAL PRECISION ARE: X= ± 1 (± 0.039), X.X= ± 0.5 (± 0.020), X.XX= ± 0.25 (± 0.010), X.XXX= ± 0.127 (± 0.005). LEAD SIZE= ± 0.05 (± 0.002), LEAD LENGTH= ± 0.75 (± 0.030), MIN= $^{+0.00}$ / $^{-0.00}$ DECIMAL PRECISION, MAX= $^{+0.00}$ / $^{-0.00}$ DECIMAL PRECISION

UNCONTROLLED DOCUMENT

REV.	PART NUMBER SSB-COB6827AW	CONFIDENTIAL INFORMATION THE INFORMATION CONTAINED IN THIS DOCUMENT IS THE PROPERTY OF LUMEX INC. EXCEPT AS SPECIFICALLY AUTHORIZED IN WRITING BY LUMEX INC., THE HOLDER OF THIS DOCUMENT SHALL KEEP ALL INFORMATION CONTAINED HEREIN CONFIDENTIAL AND SHALL PROTECT SAME IN WHOLE OR IN PART FROM DISCLOSURE AND DISSEMINATION TO ALL THIRD PARTIES.	LUMEX INCORPORATED	290 E. HELLEN ROAD PALATINE, ILLINOIS 60067 PHONE: (847) 359-2790 WEB: http://www.lumex.com
68mm x 27mm BACKLIGHT DISPLAY, 44 CHIPS ON BOARD.		RELIABILITY NOTE OUR MANY YEARS OF EXPERIENCE DATA ACCUMULATION INDICATE THAT SOLDER HEAT IS A MAJOR CAUSE OF EARLY AND FUTURE FAILURE. PLEASE PAY ATTENTION TO YOUR SOLDERING PROCESS.	DRAWN BY: CT	CHECKED BY:
			APPROVED BY:	DATE: 12.08.00
				PAGE: 1 OF 1
				SCALE: N/A