

Time and hours meters electromechanic

Hour counters with DIN dimensions

Display 7-digits, VAC trigger

B 148



B 148 for AC

Technical data - electrical ratings

| | |
|-------------------|---|
| Voltage supply | 24 VAC, 110 VAC, 220..240 VAC (50/60 Hz) |
| Nominal frequency | 50 / 60 Hz |
| Power consumption | 1 VA |
| Gear precision | Synchronous to mains |
| Approval | CE conform |

Features

- Time and hour counter
- AC voltage
- 7-digit number wheel counter
- Measuring range 99999.99 h
- Without reset

Description

Baumer IVO hour counters are applied anywhere to make costs become evident, to observe maintenance intervals, to define warranty periods or to record operation hours.

Technical data - mechanical design

| | |
|-------------------------|---|
| Display | White numbers on black |
| Number of digits | 7-digits |
| Digit height | 4 mm |
| Measuring range | 99 999.99 h |
| Reading accuracy | AC: 1/100 h = 36 s |
| Operating temperature | -10...+50 °C |
| Storing temperature | -20...+70 °C |
| Relative humidity | 80 % non-condensing |
| Protection DIN EN 60529 | IP 20 |
| Housing type | Built-in housing Surface mount housing |
| E-connection | Screw terminal connector |
| Mounting | Clip frame |
| Dimensions W x H x L | 48 x 48 x 43 mm |
| Cutout dimensions | 45 x 45 mm |
| Installation depth | 33 mm |
| Weight approx. | 60 g |
| Material | Housing: plastic |

Time and hours meters electromechanic

Hour counters with DIN dimensions

Display 7-digits, VAC trigger

B 148

Part number

B 148.0

| | | | | |
|--|---|--|--|---|
| | X | | | C |
|--|---|--|--|---|

Voltage
5 24 VAC
8 110 VAC
9 220...240 VAC

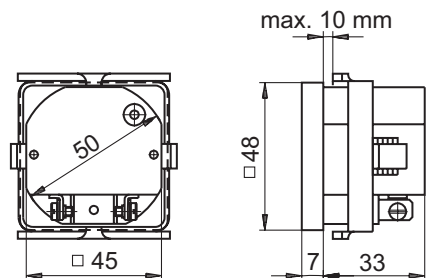
Frequency
C 50 Hz
D 60 Hz

Model / front dimensions

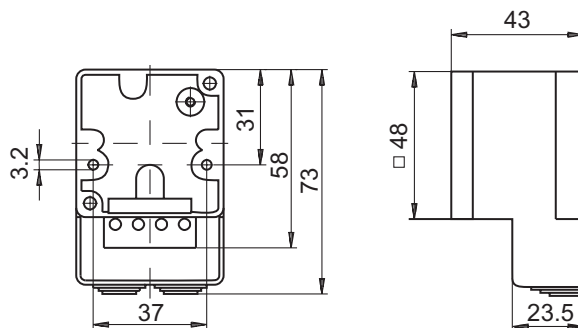
- 01 Built-in mounting 45 x 45 mm, screw terminals 48 x 48 mm
- 02 Built-in mounting $\varnothing 50$ mm, screw terminals 55 x 55 mm
- 07 Surface mount, snap-on base for DIN rail EN 50022

Dimensions

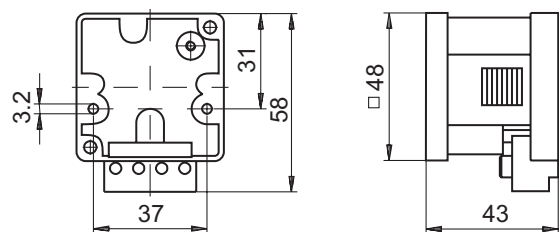
Built-in counter



For surface mount, snap-in base with terminal cover



For surface mount, snap-in base w/o terminal cover



For surface mount, snap-in base (EN 50022)

