

AC Film Capacitors

B 32330

Motor run

B 32332

Construction

- Dielectric: polypropylene film
- Aluminum can
- Soft polyurethane resin

Features

- Self-healing properties
- Low dissipation factor
- Overpressure disconnecter
- High insulation resistance

Typical applications

For general sine wave applications, mainly as motor run capacitor

Terminals

- Single (B32330 series) or Double (B32332 series) fast on 6,3 x 0,8 mm

Mounting parts

- Metal stud (max. torque = 5 Nm)

Technical data and specifications

Standard	IEC / EN 60252
Rated capacitance C_N	3 ... 60 μF
Tolerance	$\pm 5\%$, $\pm 6\%$, $\pm 10\%$
Rated voltage U_N	250 ... 450 Vac
Rated frequency f_N	50...60Hz
Life expectance	10.000 h (class B)
Maximum ratings	
Maximum permissible voltage U_{max}	$1,1 \times U_n$ (U_n = Rated voltage)
Maximum permissible current I_{max}	$1,3 \times I_n$ (I_n = Rated current)
Test data	
AC test voltage terminal to terminal U_{TT}	$2 \times U_n$, 60s.
Insulation voltage terminals to case	2000 Vac, 60s.
Insulation resistance R_{is} or time constant τ at 20 °C	3000 s
Rel. Humidity ≤ 65 °C (minimum value)	
Dissipation factor $\tan\delta$ at 20 °C	$\leq 1,0 \times 10^{-3}$ (120 Hz)
Maximum rate of voltage rise du/dt_{max}	10 V/ μs



Technical data (cont`d)

Climatic data

Climatic category	25/085/21 (according to IEC 60068-1)
Lower category T_{min}	-25 °C
Upper category T_{max}	+85 °C
Damp heat test t_{test}	21 days
Permitted capacitance $\Delta C/C$	$\leq 3 \%$

Approved marks



Currently available in Icotron

* VDE approval only for 400 and 450V.

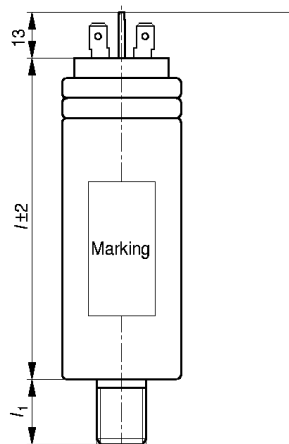
Note :

- 1) It should be noted that presence of harmonics produces over voltage & over current on capacitors. Resonance may cause serious damage to installation if a significant level of total harmonic distortion level exists for voltage or current. In such cases, series reactors must be considered.
- 2) Operating temperature class: in accordance with the reference standards, these temperatures are those measured on the surface on the capacitor.

Dimensional drawings

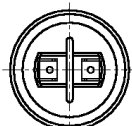
B32332 Series

B32330 Series

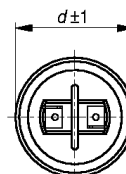
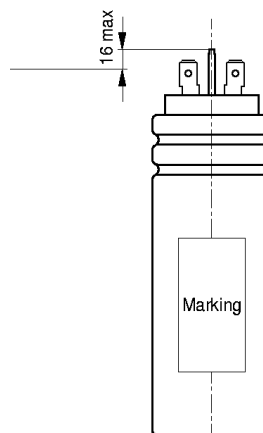


M8 for $\phi d = 30 - 53$ ($l_1 = 10$)
M12 for $\phi d = 63,5$ ($l_1 = 16$)

According to DIN 6797-A
According to DIN 934



KMK0502-U



KMK0503-3

Ordering codes and packing units

U _N [Vac]	C _N [μF]	Max. dimensions d x l [mm]	Ordering code B3233*	Packing units
250	4	30 x 68	-B1405-+0**	112
	5	30 x 68	-B1505-+0**	112
	6	30 x 68	-B1605-+0**	112
	7	30 x 68	-B1705-+0**	112
	8	30 x 68	-B1805-+0**	112
	10	30 x 68	-B1106-+0**	112
	12	30 x 68	-B1126-+0**	112
	15	35 x 68	-B1156-+0**	84
	20	35 x 68	-B1206-+0**	84
	25	35 x 78	-B1256-+0**	84
	30	40 x 78	-B1306-+0**	45
	35	40 x 78	-B1356-+0**	45
	40	40 x 78	-B1406-+0**	45
	45	40 x 78	-B1456-+0**	45
	50	40 x 103	-B1506-+0**	45
	55	40 x 103	-B1556-+0**	45
60	40 x 103	-B1606-+0**	45	
400	4	30 x 68	B4405-+0**	112
	5	30 x 68	-B4505-+0**	112
	6	30 x 68	-B4605-+0**	112
	7	30 x 78	-B4705-+0**	112
	8	30 x 78	-B4805-+0**	112
	10	30 x 78	-B4106-+0**	112
	12	35 x 78	-B4126-+0**	84
	15	40 x 78	-B4156-+0**	45
	20	40 x 78	-B4206-+0**	45
	25	40 x 103	-B4256-+0**	45
	30	40 x 103	-B4306-+0**	45

U _N [Vac]	C _N [μF]	Max. dimensions d x l [mm]	Ordering code B3233*	Packing units
400 (cont.)	35	45 x 103	-B4356-+0**	45
	40	50 x 103	-B4406-+0**	32
	45	50 x 103	-B4456-+0**	32
	50	53 x 103	-B4506-+0**	32
	60	53 x 130	-B4606-+0**	32
450	3	30 x 68	-B6305-+0**	112
	4	30 X 68	-B6405-+0**	112
	5	30 x 78	-B6505-+0**	112
	6	30 x 78	-B6605-+0**	112
	7	30 x 78	B6705-+0**	112
	8	35 x 78	-B6805-+0**	84
	10	40 x 78	-B6106-+0**	45
	12	40 x 78	-B6126-+0**	45
	15	40 x 103	-B6156-+0**	45
	20	40 x 103	-B6206-+0**	45
	25	45 x 103	-B6256-+0**	45
	30	50 x 103	-B6306-+0**	32
	35	50 x 103	-B6356-+0**	32
	40	53 x 103	-B6406-+0**	32
	45	53 x 140	-B6456-+0**	32
	50	53 x 140	-B6506-+0**	32
	55	63.5 x 140	-B6556-+0**	28
60	63.5 x 140	-B6606-+0**	28	

Notes for ordering code:

1. Replace * by : 0 - single tab fast-on.
2 - double tab fast-on.
2. For capacitance tolerance replace + by : J - ±5%, E - ±6%, K - ±10%
3. Replace ** by : 50 - aluminum can
70 - aluminum can with
M 8 fixing threaded bolt for ≤ φ 53mm.
M 12 fixing threaded bolt for φ 63.5mm.

© EPCOS AG 2000. All Rights Reserved. Reproduction, publication and dissemination of this data sheet, enclosures hereto and the information contained therein without EPCOS' prior express consent is prohibited.

The information contained in this data sheet describes the type of component and shall not be considered as guaranteed characteristics. Purchase orders are subject to the General Conditions for the Supply of Products and Services of the Electrical and Electronics Industry recommended by the ZVEI (German Electrical and Electronic Manufacturers' Association), unless otherwise agreed.