

(5,00mm) .197"

MPS SERIES

MPS-02-7.70-01-L-V

MPS-06-7.70-01-L-V

25A DUAL LEAF SOCKET

SPECIFICATIONS

For complete specifications see www.samtec.com?MPS

Insulator Material:

Black LCP

Terminal Material:

Copper Alloy

Plating:

Sn or Au over 50µ"

(1.27µm) Ni

Operating Temp Range:

-55°C to +105°C with Tin;

-55°C to +125°C with Gold

Voltage Rating:

600 VAC/848 VDC

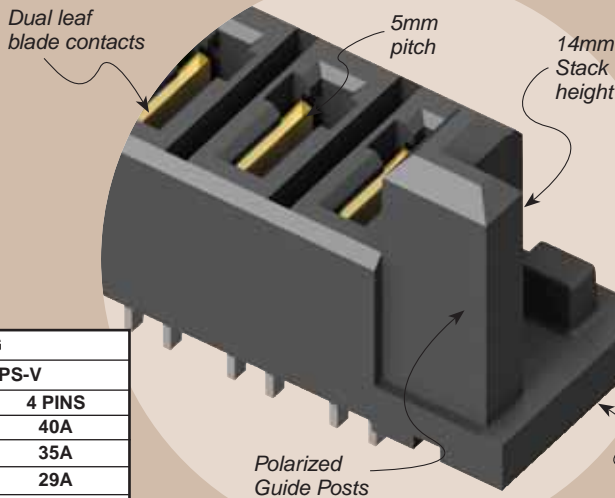
RoHS Compliant:

Yes

Lead-Free Solderable:

Yes

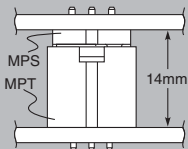
Mates with:
MPT



AMBIENT TEMP	CURRENT RATING	
	MPT-V/MPS-V	
	2 PINS	4 PINS
20°C	46.1A	40A
40°C	40.2A	35A
60°C	33.3A	29A
95°C	27A	23.7A

-T PLATING

MATED HEIGHT



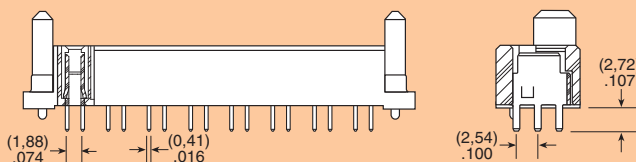
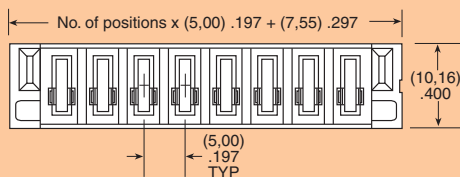
ALSO AVAILABLE

- Power/Signal combination Sockets. See MPSC Series.
- High Power Sockets. See PES Series. Call Samtec.

APPLICATION SPECIFIC OPTION

- Locking Clip (Manual placement required).
- Solder leads for (2,36mm) .093" thick board. Call Samtec.

MPS	POWER PINS	LEAD STYLE	TAIL LENGTH	PLATING OPTION	V
-02, -04, -06, -08		-7.70 = (7,70mm) .303"	-01 = Use with (1,60mm) .062" Thick PCB	-L = 10µ" (0,25µm) Gold on contact, Matte Tin on tail -T = Matte Tin	



Note: Some sizes, styles and options are non-standard, non-returnable.

Due to technical progress, all designs, specifications and components are subject to change without notice.

WWW.SAMTEC.COM