

74AUP1G240

Low-power inverting buffer/line driver; 3-state

Rev. 01 — 6 November 2006

Product data sheet

1. General description

The 74AUP1G240 is a high-performance, low-power, low-voltage, Si-gate CMOS device, superior to most advanced CMOS compatible TTL families.

Schmitt-trigger action at all inputs makes the circuit tolerant to slower input rise and fall times across the entire V_{CC} range from 0.8 V to 3.6 V.

This device ensures a very low static and dynamic power consumption across the entire V_{CC} range from 0.8 V to 3.6 V.

This device is fully specified for partial Power-down applications using I_{OFF} . The I_{OFF} circuitry disables the output, preventing the damaging backflow current through the device when it is powered down.

The 74AUP1G240 provides the single inverting buffer/line driver with 3-state output. The 3-state output is controlled by the output enable input (\overline{OE}). A HIGH level at pin \overline{OE} causes the output to assume a high-impedance OFF-state.

This device has the input-disable feature, which allows floating input signals. The inputs are disabled when the output enable input \overline{OE} is HIGH.

2. Features

- Wide supply voltage range from 0.8 V to 3.6 V
- High noise immunity
- Complies with JEDEC standards:
 - ◆ JESD8-12 (0.8 V to 1.3 V)
 - ◆ JESD8-11 (0.9 V to 1.65 V)
 - ◆ JESD8-7 (1.2 V to 1.95 V)
 - ◆ JESD8-5 (1.8 V to 2.7 V)
 - ◆ JESD8-B (2.7 V to 3.6 V)
- ESD protection:
 - ◆ HBM JESD22-A114-D exceeds 5000 V
 - ◆ MM JESD22-A115-A exceeds 200 V
 - ◆ CDM JESD22-C101-C exceeds 1000 V
- Low static power consumption; $I_{CC} = 0.9 \mu\text{A}$ (maximum)
- Latch-up performance exceeds 100 mA per JESD 78 Class II
- Inputs accept voltages up to 3.6 V
- Low noise overshoot and undershoot < 10 % of V_{CC}
- Input-disable feature allows floating input conditions



- I_{OFF} circuitry provides partial Power-down mode operation
- Multiple package options
- Specified from -40 °C to +85 °C and -40 °C to +125 °C

3. Ordering information

Table 1. Ordering information

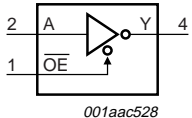
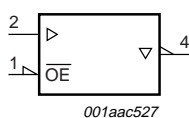
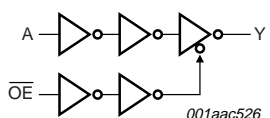
| Type number | Package | | | Version |
|--------------|-------------------|--------|---|----------|
| | Temperature range | Name | Description | |
| 74AUP1G240GW | -40 °C to +125 °C | TSSOP5 | plastic thin shrink small outline package; 5 leads; body width 1.25 mm | SOT353-1 |
| 74AUP1G240GM | -40 °C to +125 °C | XSON6 | plastic extremely thin small outline package; no leads; 6 terminals; body 1 × 1.45 × 0.5 mm | SOT886 |
| 74AUP1G240GF | -40 °C to +125 °C | XSON6 | plastic extremely thin small outline package; no leads; 6 terminals; body 1 × 1 × 0.5 mm | SOT891 |

4. Marking

Table 2. Marking

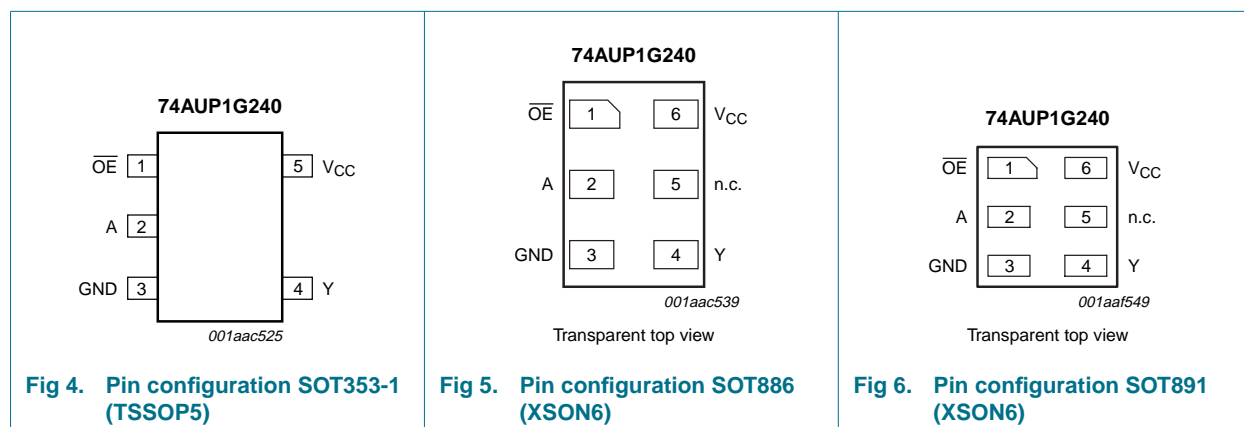
| Type number | Marking code |
|--------------|--------------|
| 74AUP1G240GW | p2 |
| 74AUP1G240GM | p2 |
| 74AUP1G240GF | p2 |

5. Functional diagram

| | | |
|--|--|---|
|  <p>001aac528</p> <p>Fig 1. Logic symbol</p> |  <p>001aac527</p> <p>Fig 2. IEC logic symbol</p> |  <p>001aac526</p> <p>Fig 3. Logic diagram</p> |
|--|--|---|

6. Pinning information

6.1 Pinning



6.2 Pin description

Table 3. Pin description

| Symbol | Pin | | Description |
|-----------------|--------|-------|---------------------|
| | TSSOP5 | XSON6 | |
| OE | 1 | 1 | output enable input |
| A | 2 | 2 | data input A |
| GND | 3 | 3 | ground (0 V) |
| Y | 4 | 4 | data output Y |
| n.c. | - | 5 | not connected |
| V _{CC} | 5 | 6 | supply voltage |

7. Functional description

Table 4. Function table^[1]

| Input | | Output |
|-------|---|--------|
| OE | A | Y |
| L | L | H |
| L | H | L |
| H | X | Z |

[1] H = HIGH voltage level;
 L = LOW voltage level;
 X = Don't care;
 Z = high-impedance OFF-state.

8. Limiting values

Table 5. Limiting values

In accordance with the Absolute Maximum Rating System (IEC 60134). Voltages are referenced to GND (ground = 0 V).

| Symbol | Parameter | Conditions | Min | Max | Unit |
|-----------|-------------------------|---------------------------------|----------|------|------|
| V_{CC} | supply voltage | | -0.5 | +4.6 | V |
| I_{IK} | input clamping current | $V_I < 0$ V | - | -50 | mA |
| V_I | input voltage | | [1] -0.5 | +4.6 | V |
| I_{OK} | output clamping current | $V_O > V_{CC}$ or $V_O < 0$ V | - | ±50 | mA |
| V_O | output voltage | Active mode and Power-down mode | [1] -0.5 | +4.6 | V |
| I_O | output current | $V_O = 0$ V to V_{CC} | - | ±20 | mA |
| I_{CC} | supply current | | - | 50 | mA |
| I_{GND} | ground current | | - | -50 | mA |
| T_{stg} | storage temperature | | -65 | +150 | °C |
| P_{tot} | total power dissipation | $T_{amb} = -40$ °C to +125 °C | [2] - | 250 | mW |

[1] The input and output voltage ratings may be exceeded if the input and output current ratings are observed.

[2] For TSSOP5 packages: above 87.5 °C the value of P_{tot} derates linearly with 4.0 mW/K.
For XSON6 packages: above 45 °C the value of P_{tot} derates linearly with 2.4 mW/K.

9. Recommended operating conditions

Table 6. Recommended operating conditions

| Symbol | Parameter | Conditions | Min | Max | Unit |
|---------------------|-------------------------------------|---------------------------------|-----|----------|------|
| V_{CC} | supply voltage | | 0.8 | 3.6 | V |
| V_I | input voltage | | 0 | 3.6 | V |
| V_O | output voltage | Active mode | 0 | V_{CC} | V |
| | | Power-down mode; $V_{CC} = 0$ V | 0 | 3.6 | V |
| T_{amb} | ambient temperature | | -40 | +125 | °C |
| $\Delta t/\Delta V$ | input transition rise and fall rate | $V_{CC} = 0.8$ V to 3.6 V | 0 | 200 | ns/V |

10. Static characteristics

Table 7. Static characteristics

At recommended operating conditions; voltages are referenced to GND (ground = 0 V).

| Symbol | Parameter | Conditions | Min | Typ | Max | Unit |
|-------------------------------------|--------------------------|----------------------------|----------------------|-----|----------------------|------|
| $T_{amb} = 25$ °C | | | | | | |
| V_{IH} | HIGH-level input voltage | $V_{CC} = 0.8$ V | $0.70 \times V_{CC}$ | - | - | V |
| | | $V_{CC} = 0.9$ V to 1.95 V | $0.65 \times V_{CC}$ | - | - | V |
| | | $V_{CC} = 2.3$ V to 2.7 V | 1.6 | - | - | V |
| | | $V_{CC} = 3.0$ V to 3.6 V | 2.0 | - | - | V |
| V_{IL} | LOW-level input voltage | $V_{CC} = 0.8$ V | - | - | $0.30 \times V_{CC}$ | V |
| | | $V_{CC} = 0.9$ V to 1.95 V | - | - | $0.35 \times V_{CC}$ | V |
| | | $V_{CC} = 2.3$ V to 2.7 V | - | - | 0.7 | V |
| | | $V_{CC} = 3.0$ V to 3.6 V | - | - | 0.9 | V |

Table 7. Static characteristics ...continued

At recommended operating conditions; voltages are referenced to GND (ground = 0 V).

| Symbol | Parameter | Conditions | Min | Typ | Max | Unit | |
|---|--------------------------------------|---|---|---|-----------------------|------|------|
| V _{OH} | HIGH-level output voltage | V _I = V _{IH} or V _{IL} | | | | | |
| | | I _O = -20 μA; V _{CC} = 0.8 V to 3.6 V | V _{CC} - 0.1 | - | - | V | |
| | | I _O = -1.1 mA; V _{CC} = 1.1 V | 0.75 × V _{CC} | - | - | V | |
| | | I _O = -1.7 mA; V _{CC} = 1.4 V | 1.11 | - | - | V | |
| | | I _O = -1.9 mA; V _{CC} = 1.65 V | 1.32 | - | - | V | |
| | | I _O = -2.3 mA; V _{CC} = 2.3 V | 2.05 | - | - | V | |
| | | I _O = -3.1 mA; V _{CC} = 2.3 V | 1.9 | - | - | V | |
| | | I _O = -2.7 mA; V _{CC} = 3.0 V | 2.72 | - | - | V | |
| V _{OL} | LOW-level output voltage | V _I = V _{IH} or V _{IL} | | | | | |
| | | I _O = 20 μA; V _{CC} = 0.8 V to 3.6 V | - | - | 0.1 | V | |
| | | I _O = 1.1 mA; V _{CC} = 1.1 V | - | - | 0.3 × V _{CC} | V | |
| | | I _O = 1.7 mA; V _{CC} = 1.4 V | - | - | 0.31 | V | |
| | | I _O = 1.9 mA; V _{CC} = 1.65 V | - | - | 0.31 | V | |
| | | I _O = 2.3 mA; V _{CC} = 2.3 V | - | - | 0.31 | V | |
| | | I _O = 3.1 mA; V _{CC} = 2.3 V | - | - | 0.44 | V | |
| | | I _O = 2.7 mA; V _{CC} = 3.0 V | - | - | 0.31 | V | |
| I _I | input leakage current | V _I = GND to 3.6 V; V _{CC} = 0 V to 3.6 V | - | - | ±0.1 | μA | |
| | | I _{OZ} | OFF-state output current | V _I = V _{IH} or V _{IL} ; V _O = 0 V to 3.6 V; V _{CC} = 0 V to 3.6 V | - | - | ±0.1 |
| I _{OFF} | power-off leakage current | V _I or V _O = 0 V to 3.6 V; V _{CC} = 0 V | - | - | ±0.2 | μA | |
| ΔI _{OFF} | additional power-off leakage current | V _I or V _O = 0 V to 3.6 V; V _{CC} = 0 V to 0.2 V | - | - | ±0.2 | μA | |
| I _{CC} | supply current | V _I = GND or V _{CC} ; I _O = 0 A; V _{CC} = 0.8 V to 3.6 V | - | - | 0.5 | μA | |
| ΔI _{CC} | additional supply current | data input; V _I = V _{CC} - 0.6 V; I _O = 0 A; V _{CC} = 3.3 V | [1] | - | 40 | μA | |
| | | OE input; V _I = V _{CC} - 0.6 V; I _O = 0 A; V _{CC} = 3.3 V | [1] | - | 110 | μA | |
| | | all inputs; V _I = GND to 3.6 V; OE = V _{CC} ; V _{CC} = 0.8 V to 3.6 V | [2] | - | 1 | μA | |
| C _I | input capacitance | V _{CC} = 0 V to 3.6 V; V _I = GND or V _{CC} | - | 0.8 | - | pF | |
| C _O | output capacitance | output enabled | V _O = GND; V _{CC} = 0 V | - | 1.7 | - | pF |
| | | output disabled | V _{CC} = 0 V to 3.6 V; V _O = GND or V _{CC} | - | 1.5 | - | pF |
| T_{amb} = -40 °C to +85 °C | | | | | | | |
| V _{IH} | HIGH-level input voltage | V _{CC} = 0.8 V | 0.70 × V _{CC} | - | - | V | |
| | | V _{CC} = 0.9 V to 1.95 V | 0.65 × V _{CC} | - | - | V | |
| | | V _{CC} = 2.3 V to 2.7 V | 1.6 | - | - | V | |
| | | V _{CC} = 3.0 V to 3.6 V | 2.0 | - | - | V | |

Table 7. Static characteristics ...continued

At recommended operating conditions; voltages are referenced to GND (ground = 0 V).

| Symbol | Parameter | Conditions | Min | Typ | Max | Unit |
|--|--------------------------------------|--|------------------------|-----|------------------------|------|
| V _{IL} | LOW-level input voltage | V _{CC} = 0.8 V | - | - | 0.30 × V _{CC} | V |
| | | V _{CC} = 0.9 V to 1.95 V | - | - | 0.35 × V _{CC} | V |
| | | V _{CC} = 2.3 V to 2.7 V | - | - | 0.7 | V |
| | | V _{CC} = 3.0 V to 3.6 V | - | - | 0.9 | V |
| V _{OH} | HIGH-level output voltage | V _I = V _{IH} or V _{IL} | | | | |
| | | I _O = -20 μA; V _{CC} = 0.8 V to 3.6 V | V _{CC} - 0.1 | - | - | V |
| | | I _O = -1.1 mA; V _{CC} = 1.1 V | 0.7 × V _{CC} | - | - | V |
| | | I _O = -1.7 mA; V _{CC} = 1.4 V | 1.03 | - | - | V |
| | | I _O = -1.9 mA; V _{CC} = 1.65 V | 1.30 | - | - | V |
| | | I _O = -2.3 mA; V _{CC} = 2.3 V | 1.97 | - | - | V |
| | | I _O = -3.1 mA; V _{CC} = 2.3 V | 1.85 | - | - | V |
| | | I _O = -2.7 mA; V _{CC} = 3.0 V | 2.67 | - | - | V |
| | | I _O = -4.0 mA; V _{CC} = 3.0 V | 2.55 | - | - | V |
| V _{OL} | LOW-level output voltage | V _I = V _{IH} or V _{IL} | | | | |
| | | I _O = 20 μA; V _{CC} = 0.8 V to 3.6 V | - | - | 0.1 | V |
| | | I _O = 1.1 mA; V _{CC} = 1.1 V | - | - | 0.3 × V _{CC} | V |
| | | I _O = 1.7 mA; V _{CC} = 1.4 V | - | - | 0.37 | V |
| | | I _O = 1.9 mA; V _{CC} = 1.65 V | - | - | 0.35 | V |
| | | I _O = 2.3 mA; V _{CC} = 2.3 V | - | - | 0.33 | V |
| | | I _O = 3.1 mA; V _{CC} = 2.3 V | - | - | 0.45 | V |
| | | I _O = 2.7 mA; V _{CC} = 3.0 V | - | - | 0.33 | V |
| I _O = 4.0 mA; V _{CC} = 3.0 V | - | - | 0.45 | V | | |
| I _I | input leakage current | V _I = GND to 3.6 V; V _{CC} = 0 V to 3.6 V | - | - | ±0.5 | μA |
| I _{OZ} | OFF-state output current | V _I = V _{IH} or V _{IL} ; V _O = 0 V to 3.6 V; V _{CC} = 0 V to 3.6 V | - | - | ±0.5 | μA |
| I _{OFF} | power-off leakage current | V _I or V _O = 0 V to 3.6 V; V _{CC} = 0 V | - | - | ±0.5 | μA |
| ΔI _{OFF} | additional power-off leakage current | V _I or V _O = 0 V to 3.6 V; V _{CC} = 0 V to 0.2 V | - | - | ±0.6 | μA |
| I _{CC} | supply current | V _I = GND or V _{CC} ; I _O = 0 A; V _{CC} = 0.8 V to 3.6 V | - | - | 0.9 | μA |
| ΔI _{CC} | additional supply current | data input; V _I = V _{CC} - 0.6 V; I _O = 0 A; V _{CC} = 3.3 V | [1] | - | 50 | μA |
| | | $\overline{\text{OE}}$ input; V _I = V _{CC} - 0.6 V; I _O = 0 A; V _{CC} = 3.3 V | [1] | - | 120 | μA |
| | | all inputs; V _I = GND to 3.6 V; $\overline{\text{OE}}$ = V _{CC} ; V _{CC} = 0.8 V to 3.6 V | [2] | - | 1 | μA |
| T_{amb} = -40 °C to +125 °C | | | | | | |
| V _{IH} | HIGH-level input voltage | V _{CC} = 0.8 V | 0.75 × V _{CC} | - | - | V |
| | | V _{CC} = 0.9 V to 1.95 V | 0.70 × V _{CC} | - | - | V |
| | | V _{CC} = 2.3 V to 2.7 V | 1.6 | - | - | V |
| | | V _{CC} = 3.0 V to 3.6 V | 2.0 | - | - | V |

Table 7. Static characteristics ...continued

At recommended operating conditions; voltages are referenced to GND (ground = 0 V).

| Symbol | Parameter | Conditions | Min | Typ | Max | Unit |
|--|--------------------------------------|--|------------------------|-----|------------------------|------|
| V _{IL} | LOW-level input voltage | V _{CC} = 0.8 V | - | - | 0.25 × V _{CC} | V |
| | | V _{CC} = 0.9 V to 1.95 V | - | - | 0.30 × V _{CC} | V |
| | | V _{CC} = 2.3 V to 2.7 V | - | - | 0.7 | V |
| | | V _{CC} = 3.0 V to 3.6 V | - | - | 0.9 | V |
| V _{OH} | HIGH-level output voltage | V _I = V _{IH} or V _{IL} | | | | |
| | | I _O = -20 μA; V _{CC} = 0.8 V to 3.6 V | V _{CC} - 0.11 | - | - | V |
| | | I _O = -1.1 mA; V _{CC} = 1.1 V | 0.6 × V _{CC} | - | - | V |
| | | I _O = -1.7 mA; V _{CC} = 1.4 V | 0.93 | - | - | V |
| | | I _O = -1.9 mA; V _{CC} = 1.65 V | 1.17 | - | - | V |
| | | I _O = -2.3 mA; V _{CC} = 2.3 V | 1.77 | - | - | V |
| | | I _O = -3.1 mA; V _{CC} = 2.3 V | 1.67 | - | - | V |
| | | I _O = -2.7 mA; V _{CC} = 3.0 V | 2.40 | - | - | V |
| | | I _O = -4.0 mA; V _{CC} = 3.0 V | 2.30 | - | - | V |
| V _{OL} | LOW-level output voltage | V _I = V _{IH} or V _{IL} | | | | |
| | | I _O = 20 μA; V _{CC} = 0.8 V to 3.6 V | - | - | 0.11 | V |
| | | I _O = 1.1 mA; V _{CC} = 1.1 V | - | - | 0.33 × V _{CC} | V |
| | | I _O = 1.7 mA; V _{CC} = 1.4 V | - | - | 0.41 | V |
| | | I _O = 1.9 mA; V _{CC} = 1.65 V | - | - | 0.39 | V |
| | | I _O = 2.3 mA; V _{CC} = 2.3 V | - | - | 0.36 | V |
| | | I _O = 3.1 mA; V _{CC} = 2.3 V | - | - | 0.50 | V |
| | | I _O = 2.7 mA; V _{CC} = 3.0 V | - | - | 0.36 | V |
| I _O = 4.0 mA; V _{CC} = 3.0 V | - | - | 0.50 | V | | |
| I _I | input leakage current | V _I = GND to 3.6 V; V _{CC} = 0 V to 3.6 V | - | - | ±0.75 | μA |
| I _{OZ} | OFF-state output current | V _I = V _{IH} or V _{IL} ; V _O = 0 V to 3.6 V; V _{CC} = 0 V to 3.6 V | - | - | ±0.75 | μA |
| I _{OFF} | power-off leakage current | V _I or V _O = 0 V to 3.6 V; V _{CC} = 0 V | - | - | ±0.75 | μA |
| ΔI _{OFF} | additional power-off leakage current | V _I or V _O = 0 V to 3.6 V; V _{CC} = 0 V to 0.2 V | - | - | ±0.75 | μA |
| I _{CC} | supply current | V _I = GND or V _{CC} ; I _O = 0 A; V _{CC} = 0.8 V to 3.6 V | - | - | 1.4 | μA |
| ΔI _{CC} | additional supply current | data input; V _I = V _{CC} - 0.6 V; I _O = 0 A; V _{CC} = 3.3 V | [1] | - | 75 | μA |
| | | $\overline{\text{OE}}$ input; V _I = V _{CC} - 0.6 V; I _O = 0 A; V _{CC} = 3.3 V | [1] | - | 180 | μA |
| | | all inputs; V _I = GND to 3.6 V; $\overline{\text{OE}}$ = V _{CC} ; V _{CC} = 0.8 V to 3.6 V | [2] | - | 1 | μA |

[1] One input at V_{CC} - 0.6 V, other input at V_{CC} or GND.[2] To show I_{CC} remains very low when the input-disable feature is enabled.

11. Dynamic characteristics

Table 8. Dynamic characteristics

 Voltages are referenced to GND (ground = 0 V); for test circuit see [Figure 9](#)

| Symbol | Parameter | Conditions | 25 °C | | | -40 °C to +125 °C | | | Unit |
|------------------------------|-------------------|--|-------|--------------------|------|-------------------|-------------|--------------|------|
| | | | Min | Typ ^[1] | Max | Min | Max (85 °C) | Max (125 °C) | |
| C_L = 5 pF | | | | | | | | | |
| t _{pd} | propagation delay | A to Y; see Figure 7 ^[2] | | | | | | | |
| | | V _{CC} = 0.8 V | - | 22.3 | - | - | - | - | ns |
| | | V _{CC} = 1.1 V to 1.3 V | 3.0 | 5.8 | 12.6 | 2.8 | 14.1 | 15.5 | ns |
| | | V _{CC} = 1.4 V to 1.6 V | 2.3 | 4.0 | 7.3 | 2.1 | 8.5 | 9.5 | ns |
| | | V _{CC} = 1.65 V to 1.95 V | 2.0 | 3.2 | 5.5 | 1.9 | 6.7 | 7.4 | ns |
| | | V _{CC} = 2.3 V to 2.7 V | 1.8 | 2.6 | 4.1 | 1.5 | 4.8 | 5.3 | ns |
| | | V _{CC} = 3.0 V to 3.6 V | 1.4 | 2.3 | 3.6 | 1.3 | 4.1 | 4.6 | ns |
| t _{en} | enable time | OE to Y; see Figure 8 ^[3] | | | | | | | |
| | | V _{CC} = 0.8 V | - | 70.2 | - | - | - | - | ns |
| | | V _{CC} = 1.1 V to 1.3 V | 3.1 | 6.4 | 14.3 | 2.8 | 15.9 | 17.5 | ns |
| | | V _{CC} = 1.4 V to 1.6 V | 2.5 | 4.4 | 8.1 | 2.2 | 9.5 | 10.5 | ns |
| | | V _{CC} = 1.65 V to 1.95 V | 2.1 | 3.6 | 6.2 | 1.9 | 7.4 | 8.2 | ns |
| | | V _{CC} = 2.3 V to 2.7 V | 1.8 | 2.8 | 4.6 | 1.7 | 5.4 | 6.0 | ns |
| | | V _{CC} = 3.0 V to 3.6 V | 1.7 | 2.5 | 4.0 | 1.7 | 4.7 | 5.3 | ns |
| t _{dis} | disable time | OE to Y; see Figure 8 ^[4] | | | | | | | |
| | | V _{CC} = 0.8 V | - | 14.8 | - | - | - | - | ns |
| | | V _{CC} = 1.1 V to 1.3 V | 2.0 | 4.3 | 7.4 | 2.3 | 8.3 | 9.2 | ns |
| | | V _{CC} = 1.4 V to 1.6 V | 1.6 | 3.2 | 5.2 | 1.7 | 5.9 | 6.5 | ns |
| | | V _{CC} = 1.65 V to 1.95 V | 1.5 | 3.0 | 4.8 | 1.5 | 5.5 | 6.1 | ns |
| | | V _{CC} = 2.3 V to 2.7 V | 1.1 | 2.2 | 3.5 | 1.4 | 4.0 | 4.5 | ns |
| | | V _{CC} = 3.0 V to 3.6 V | 1.3 | 2.5 | 3.9 | 1.4 | 4.5 | 5.0 | ns |
| C_L = 10 pF | | | | | | | | | |
| t _{pd} | propagation delay | A to Y; see Figure 7 ^[2] | | | | | | | |
| | | V _{CC} = 0.8 V | - | 25.7 | - | - | - | - | ns |
| | | V _{CC} = 1.1 V to 1.3 V | 3.5 | 6.6 | 14.5 | 3.2 | 16.3 | 18.0 | ns |
| | | V _{CC} = 1.4 V to 1.6 V | 2.2 | 4.6 | 8.4 | 2.0 | 9.9 | 10.9 | ns |
| | | V _{CC} = 1.65 V to 1.95 V | 2.0 | 3.8 | 6.4 | 1.8 | 7.7 | 8.6 | ns |
| | | V _{CC} = 2.3 V to 2.7 V | 1.8 | 3.1 | 4.8 | 1.7 | 5.7 | 6.4 | ns |
| | | V _{CC} = 3.0 V to 3.6 V | 1.7 | 2.8 | 4.3 | 1.7 | 5.0 | 5.5 | ns |

Table 8. Dynamic characteristics ...continued
 Voltages are referenced to GND (ground = 0 V); for test circuit see [Figure 9](#)

| Symbol | Parameter | Conditions | 25 °C | | | -40 °C to +125 °C | | | Unit |
|------------------------------|-------------------|--|-------|--------------------|------|-------------------|-------------|--------------|------|
| | | | Min | Typ ^[1] | Max | Min | Max (85 °C) | Max (125 °C) | |
| t _{en} | enable time | OE to Y; see Figure 8 ^[3] | | | | | | | |
| | | V _{CC} = 0.8 V | - | 74.0 | - | - | - | - | ns |
| | | V _{CC} = 1.1 V to 1.3 V | 3.6 | 7.4 | 16.3 | 3.2 | 18.2 | 20.1 | ns |
| | | V _{CC} = 1.4 V to 1.6 V | 2.3 | 5.1 | 9.2 | 2.1 | 10.9 | 12.0 | ns |
| | | V _{CC} = 1.65 V to 1.95 V | 2.0 | 4.1 | 7.1 | 1.8 | 8.5 | 9.4 | ns |
| | | V _{CC} = 2.3 V to 2.7 V | 1.8 | 3.4 | 5.4 | 1.7 | 6.4 | 7.1 | ns |
| t _{dis} | disable time | OE to Y; see Figure 8 ^[4] | | | | | | | |
| | | V _{CC} = 0.8 V | - | 33.7 | - | - | - | - | ns |
| | | V _{CC} = 1.1 V to 1.3 V | 3.4 | 5.4 | 9.0 | 3.2 | 10.0 | 11.0 | ns |
| | | V _{CC} = 1.4 V to 1.6 V | 2.1 | 4.1 | 6.3 | 2.1 | 7.1 | 7.9 | ns |
| | | V _{CC} = 1.65 V to 1.95 V | 2.3 | 4.2 | 6.3 | 1.8 | 7.1 | 7.9 | ns |
| | | V _{CC} = 2.3 V to 2.7 V | 1.6 | 3.0 | 4.6 | 1.7 | 5.2 | 5.7 | ns |
| C_L = 15 pF | | | | | | | | | |
| t _{pd} | propagation delay | A to Y; see Figure 7 ^[2] | | | | | | | |
| | | V _{CC} = 0.8 V | - | 29.0 | - | - | - | - | ns |
| | | V _{CC} = 1.1 V to 1.3 V | 3.9 | 7.4 | 16.3 | 3.6 | 18.4 | 20.2 | ns |
| | | V _{CC} = 1.4 V to 1.6 V | 3.0 | 5.1 | 9.4 | 2.5 | 11.1 | 12.3 | ns |
| | | V _{CC} = 1.65 V to 1.95 V | 2.2 | 4.2 | 7.2 | 2.1 | 8.7 | 9.6 | ns |
| | | V _{CC} = 2.3 V to 2.7 V | 2.0 | 3.5 | 5.4 | 1.9 | 6.5 | 7.2 | ns |
| t _{en} | enable time | OE to Y; see Figure 8 ^[3] | | | | | | | |
| | | V _{CC} = 0.8 V | - | 77.8 | - | - | - | - | ns |
| | | V _{CC} = 1.1 V to 1.3 V | 4.0 | 8.2 | 18.2 | 3.6 | 20.4 | 22.5 | ns |
| | | V _{CC} = 1.4 V to 1.6 V | 3.0 | 5.6 | 10.3 | 2.5 | 12.2 | 13.4 | ns |
| | | V _{CC} = 1.65 V to 1.95 V | 2.3 | 4.6 | 7.9 | 2.1 | 9.5 | 10.5 | ns |
| | | V _{CC} = 2.3 V to 2.7 V | 2.1 | 3.9 | 6.0 | 2.0 | 7.2 | 7.9 | ns |
| t _{dis} | disable time | OE to Y; see Figure 8 ^[4] | | | | | | | |
| | | V _{CC} = 0.8 V | - | 62.5 | - | - | - | - | ns |
| | | V _{CC} = 1.1 V to 1.3 V | 4.3 | 6.6 | 10.4 | 3.6 | 11.6 | 12.8 | ns |
| | | V _{CC} = 1.4 V to 1.6 V | 3.0 | 5.0 | 7.4 | 2.5 | 8.4 | 9.3 | ns |
| | | V _{CC} = 1.65 V to 1.95 V | 3.0 | 5.3 | 7.8 | 2.1 | 8.7 | 9.7 | ns |
| | | V _{CC} = 2.3 V to 2.7 V | 2.1 | 3.8 | 5.7 | 2.0 | 6.4 | 7.1 | ns |
| t _{en} | enable time | OE to Y; see Figure 8 ^[3] | | | | | | | |
| | | V _{CC} = 0.8 V | - | 77.8 | - | - | - | - | ns |
| | | V _{CC} = 1.1 V to 1.3 V | 4.0 | 8.2 | 18.2 | 3.6 | 20.4 | 22.5 | ns |
| | | V _{CC} = 1.4 V to 1.6 V | 3.0 | 5.6 | 10.3 | 2.5 | 12.2 | 13.4 | ns |
| | | V _{CC} = 1.65 V to 1.95 V | 2.3 | 4.6 | 7.9 | 2.1 | 9.5 | 10.5 | ns |
| | | V _{CC} = 2.3 V to 2.7 V | 2.1 | 3.9 | 6.0 | 2.0 | 7.2 | 7.9 | ns |
| t _{dis} | disable time | OE to Y; see Figure 8 ^[4] | | | | | | | |
| | | V _{CC} = 0.8 V | - | 62.5 | - | - | - | - | ns |
| | | V _{CC} = 1.1 V to 1.3 V | 4.3 | 6.6 | 10.4 | 3.6 | 11.6 | 12.8 | ns |
| | | V _{CC} = 1.4 V to 1.6 V | 3.0 | 5.0 | 7.4 | 2.5 | 8.4 | 9.3 | ns |
| | | V _{CC} = 1.65 V to 1.95 V | 3.0 | 5.3 | 7.8 | 2.1 | 8.7 | 9.7 | ns |
| | | V _{CC} = 2.3 V to 2.7 V | 2.1 | 3.8 | 5.7 | 2.0 | 6.4 | 7.1 | ns |

Table 8. Dynamic characteristics ...continuedVoltages are referenced to GND (ground = 0 V); for test circuit see [Figure 9](#)

| Symbol | Parameter | Conditions | 25 °C | | | -40 °C to +125 °C | | | Unit |
|------------------------------|-------------------|--|-------|--------------------|------|-------------------|-------------|--------------|------|
| | | | Min | Typ ^[1] | Max | Min | Max (85 °C) | Max (125 °C) | |
| C_L = 30 pF | | | | | | | | | |
| t _{pd} | propagation delay | A to Y; see Figure 7 ^[2] | | | | | | | |
| | | V _{CC} = 0.8 V | - | 39.1 | - | - | - | - | ns |
| | | V _{CC} = 1.1 V to 1.3 V | 5.0 | 9.7 | 21.6 | 4.6 | 24.3 | 26.8 | ns |
| | | V _{CC} = 1.4 V to 1.6 V | 4.0 | 6.7 | 12.3 | 3.0 | 14.6 | 16.1 | ns |
| | | V _{CC} = 1.65 V to 1.95 V | 2.9 | 5.5 | 9.5 | 2.7 | 11.5 | 12.6 | ns |
| | | V _{CC} = 2.3 V to 2.7 V | 2.7 | 4.6 | 7.1 | 2.5 | 8.6 | 9.5 | ns |
| | | V _{CC} = 3.0 V to 3.6 V | 2.6 | 4.3 | 6.4 | 2.5 | 7.7 | 8.5 | ns |
| t _{en} | enable time | $\overline{\text{OE}}$ to Y; see Figure 8 ^[3] | | | | | | | |
| | | V _{CC} = 0.8 V | - | 89.4 | - | - | - | - | ns |
| | | V _{CC} = 1.1 V to 1.3 V | 5.2 | 10.6 | 23.8 | 4.6 | 26.7 | 29.5 | ns |
| | | V _{CC} = 1.4 V to 1.6 V | 4.0 | 7.3 | 13.2 | 3.0 | 15.7 | 17.4 | ns |
| | | V _{CC} = 1.65 V to 1.95 V | 3.0 | 6.0 | 10.2 | 2.7 | 12.3 | 13.6 | ns |
| | | V _{CC} = 2.3 V to 2.7 V | 2.8 | 5.0 | 7.8 | 2.6 | 9.3 | 10.3 | ns |
| | | V _{CC} = 3.0 V to 3.6 V | 2.8 | 4.8 | 7.1 | 2.6 | 8.4 | 9.3 | ns |
| t _{dis} | disable time | $\overline{\text{OE}}$ to Y; see Figure 8 ^[4] | | | | | | | |
| | | V _{CC} = 0.8 V | - | 68.9 | - | - | - | - | ns |
| | | V _{CC} = 1.1 V to 1.3 V | 6.0 | 9.3 | 15.0 | 4.6 | 16.5 | 18.2 | ns |
| | | V _{CC} = 1.4 V to 1.6 V | 4.4 | 7.7 | 11.0 | 3.0 | 12.2 | 13.4 | ns |
| | | V _{CC} = 1.65 V to 1.95 V | 5.1 | 8.8 | 12.4 | 2.7 | 13.7 | 15.1 | ns |
| | | V _{CC} = 2.3 V to 2.7 V | 3.6 | 6.2 | 9.0 | 2.6 | 10.0 | 11.0 | ns |
| | | V _{CC} = 3.0 V to 3.6 V | 5.2 | 8.8 | 12.7 | 2.6 | 14.0 | 15.4 | ns |

Table 8. Dynamic characteristics ...continued
 Voltages are referenced to GND (ground = 0 V); for test circuit see [Figure 9](#)

| Symbol | Parameter | Conditions | 25 °C | | | -40 °C to +125 °C | | | Unit |
|---|-------------------------------|--|-------|--------------------|-----|-------------------|-------------|--------------|------|
| | | | Min | Typ ^[1] | Max | Min | Max (85 °C) | Max (125 °C) | |
| C_L = 5 pF, 10 pF, 15 pF and 30 pF | | | | | | | | | |
| C _{PD} | power dissipation capacitance | f _i = 1 MHz; V _I = GND to V _{CC} | | [5] | | | | | |
| | | V _{CC} = 0.8 V | - | 2.7 | - | - | - | - | pF |
| | | V _{CC} = 1.1 V to 1.3 V | - | 2.9 | - | - | - | - | pF |
| | | V _{CC} = 1.4 V to 1.6 V | - | 3.0 | - | - | - | - | pF |
| | | V _{CC} = 1.65 V to 1.95 V | - | 3.2 | - | - | - | - | pF |
| | | V _{CC} = 2.3 V to 2.7 V | - | 3.7 | - | - | - | - | pF |
| | | V _{CC} = 3.0 V to 3.6 V | - | 4.2 | - | - | - | - | pF |

- [1] All typical values are measured at nominal V_{CC}.
- [2] t_{pd} is the same as t_{PLH} and t_{PHL}
- [3] t_{en} is the same as t_{PZH} and t_{PZL}
- [4] t_{dis} is the same as t_{PHZ} and t_{PLZ}
- [5] C_{PD} is used to determine the dynamic power dissipation (P_D in μW).
 $P_D = C_{PD} \times V_{CC}^2 \times f_i \times N + \Sigma(C_L \times V_{CC}^2 \times f_o)$ where:
 f_i = input frequency in MHz;
 f_o = output frequency in MHz;
 C_L = output load capacitance in pF;
 V_{CC} = supply voltage in V;
 N = number of inputs switching;
 $\Sigma(C_L \times V_{CC}^2 \times f_o)$ = sum of the outputs.

12. Waveforms

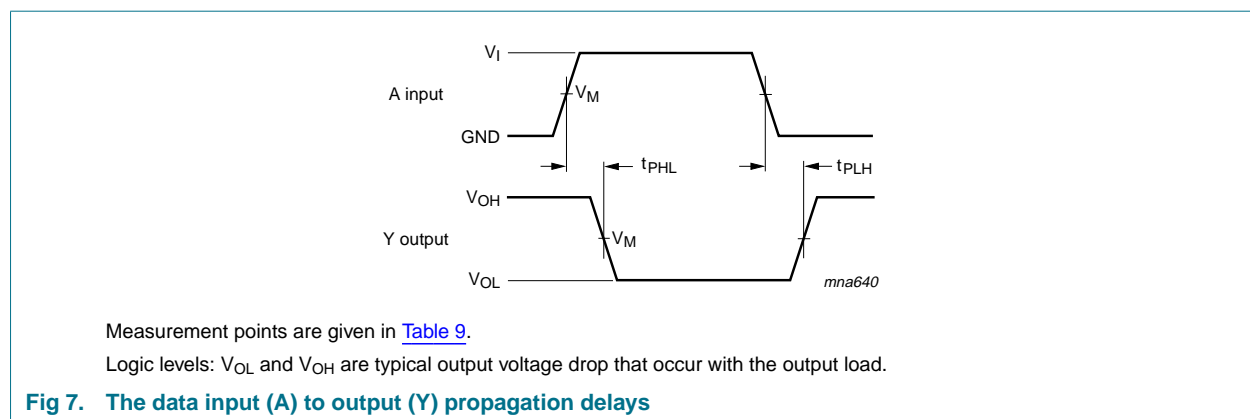


Table 9. Measurement points

| Supply voltage | Output | Input | | |
|-----------------|-----------------------|-----------------------|-----------------|---------------------------------|
| V _{CC} | V _M | V _M | V _I | t _r = t _f |
| 0.8 V to 3.6 V | 0.5 × V _{CC} | 0.5 × V _{CC} | V _{CC} | ≤ 3.0 ns |

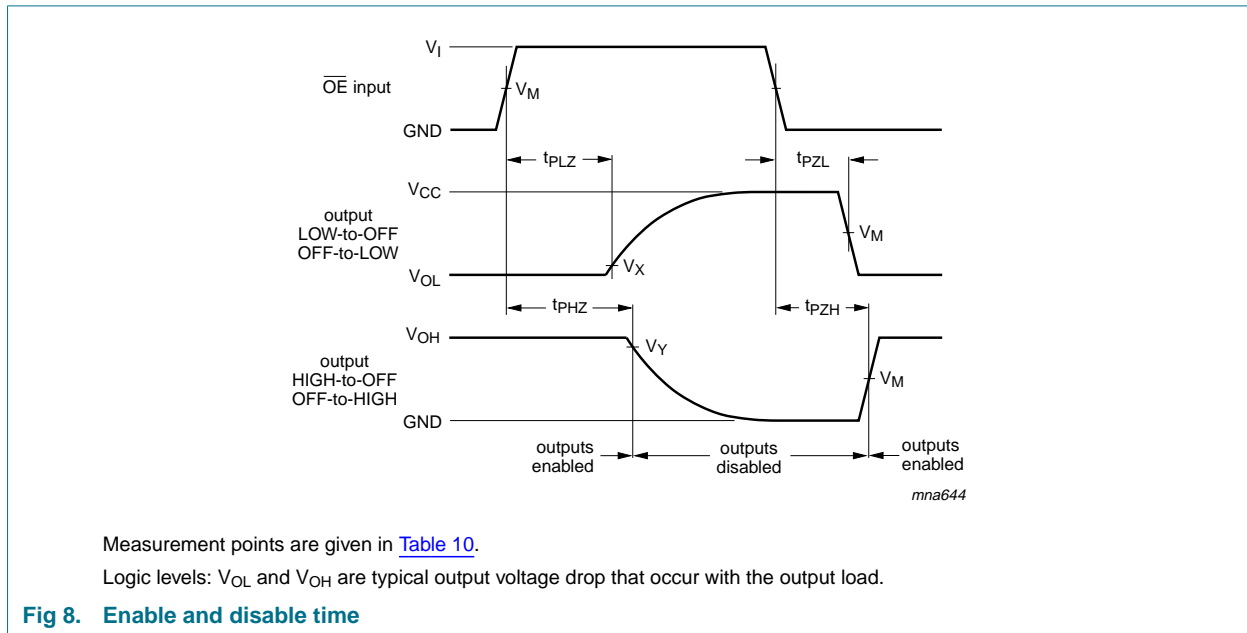


Table 10. Measurement points

| Supply voltage | Input | Output | | |
|-----------------|---------------------|---------------------|---------------------------|---------------------------|
| V_{CC} | V_M | V_M | V_X | V_Y |
| 0.8 V to 1.6 V | $0.5 \times V_{CC}$ | $0.5 \times V_{CC}$ | $V_{OL} + 0.1 \text{ V}$ | $V_{OH} - 0.1 \text{ V}$ |
| 1.65 V to 2.7 V | $0.5 \times V_{CC}$ | $0.5 \times V_{CC}$ | $V_{OL} + 0.15 \text{ V}$ | $V_{OH} - 0.15 \text{ V}$ |
| 3.0 V to 3.6 V | $0.5 \times V_{CC}$ | $0.5 \times V_{CC}$ | $V_{OL} + 0.3 \text{ V}$ | $V_{OH} - 0.3 \text{ V}$ |

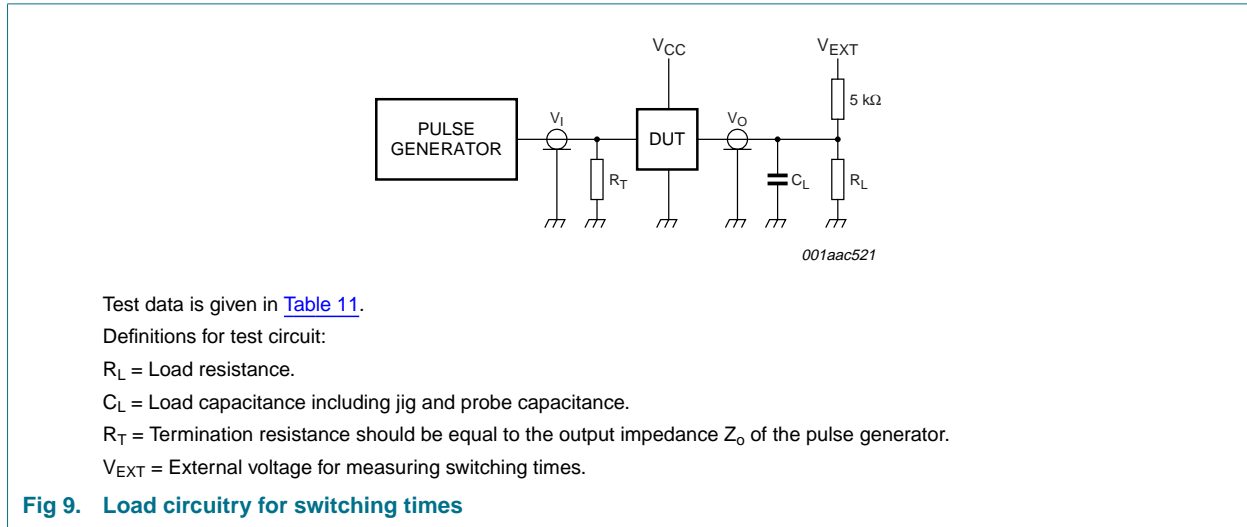


Table 11. Test data

| Supply voltage | Load | | V_{EXT} | | |
|----------------|------------------------------|--------------|-----------------------|-----------------------|-----------------------|
| V_{CC} | C_L | R_L [1] | t_{PLH} , t_{PHL} | t_{PZH} , t_{PHZ} | t_{PZL} , t_{PLZ} |
| 0.8 V to 3.6 V | 5 pF, 10 pF, 15 pF and 30 pF | 5 kΩ or 1 MΩ | open | GND | $2 \times V_{CC}$ |

[1] For measuring enable and disable times $R_L = 5 \text{ k}\Omega$, for measuring propagation delays, setup and hold times and pulse width $R_L = 1 \text{ M}\Omega$.

13. Package outline

TSSOP5: plastic thin shrink small outline package; 5 leads; body width 1.25 mm

SOT353-1

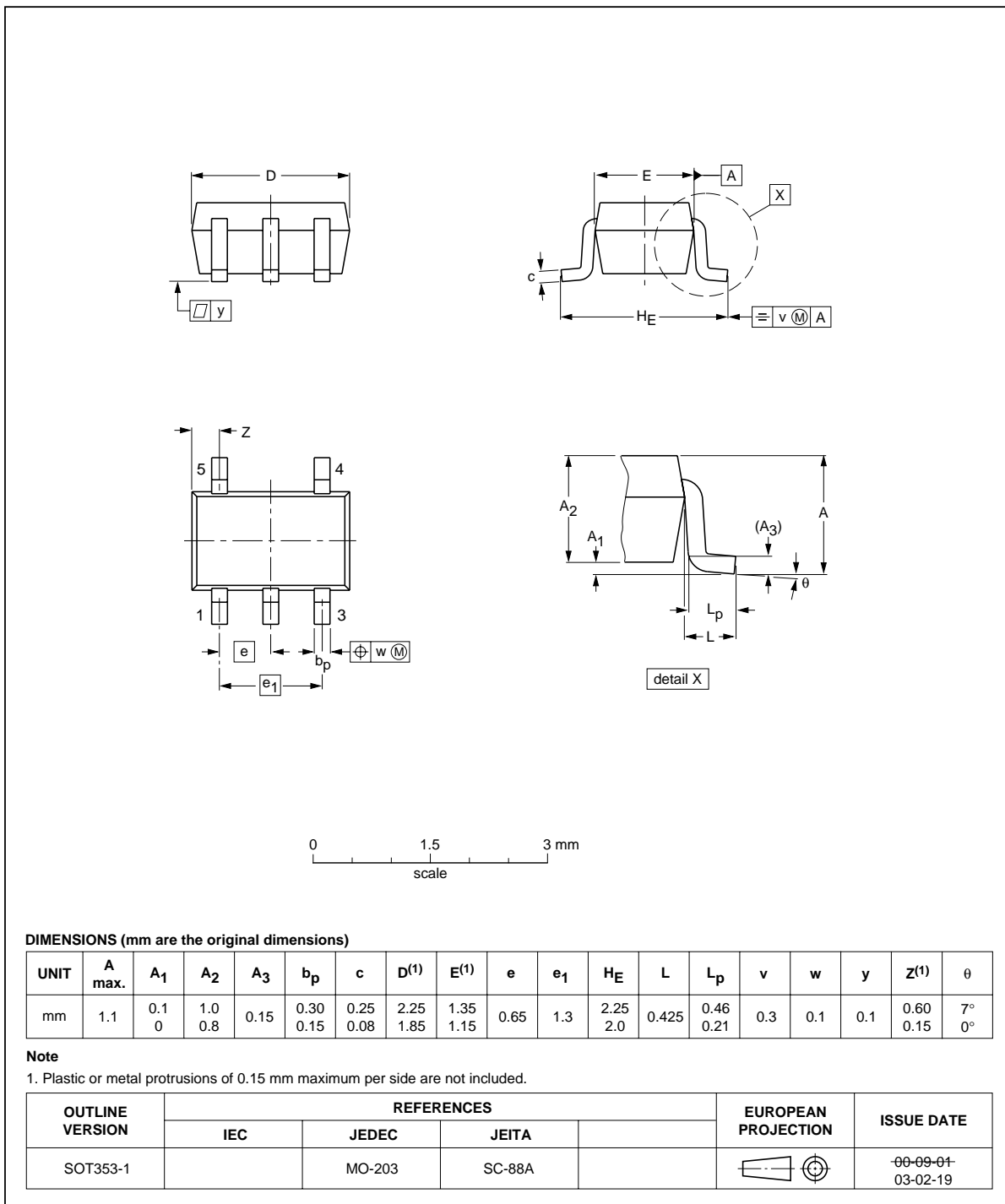


Fig 10. Package outline SOT353-1 (TSSOP5)

XSON6: plastic extremely thin small outline package; no leads; 6 terminals; body 1 x 1.45 x 0.5 mm

SOT886

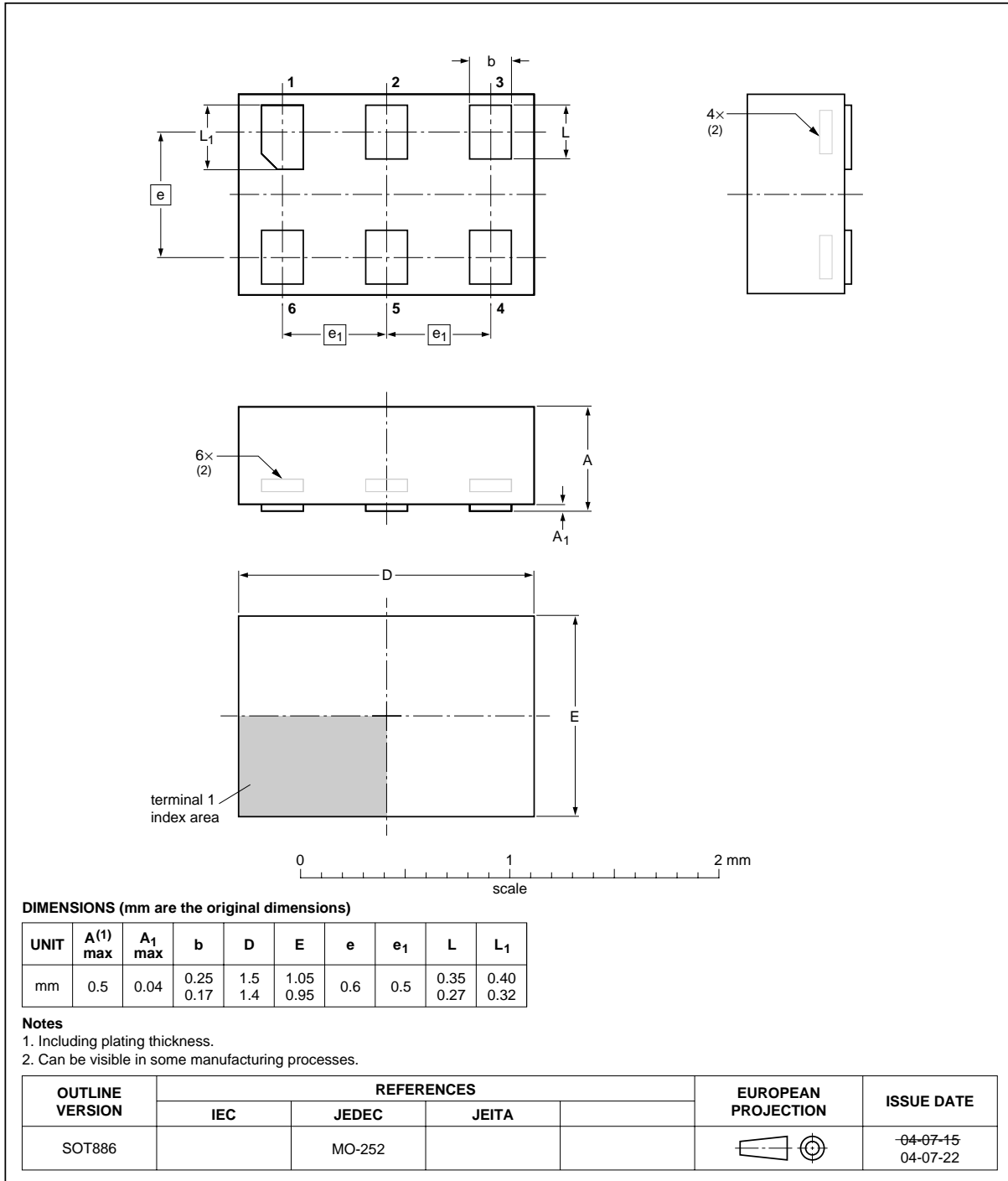


Fig 11. Package outline SOT886 (XSON6)

XSON6: plastic extremely thin small outline package; no leads; 6 terminals; body 1 x 1 x 0.5 mm

SOT891

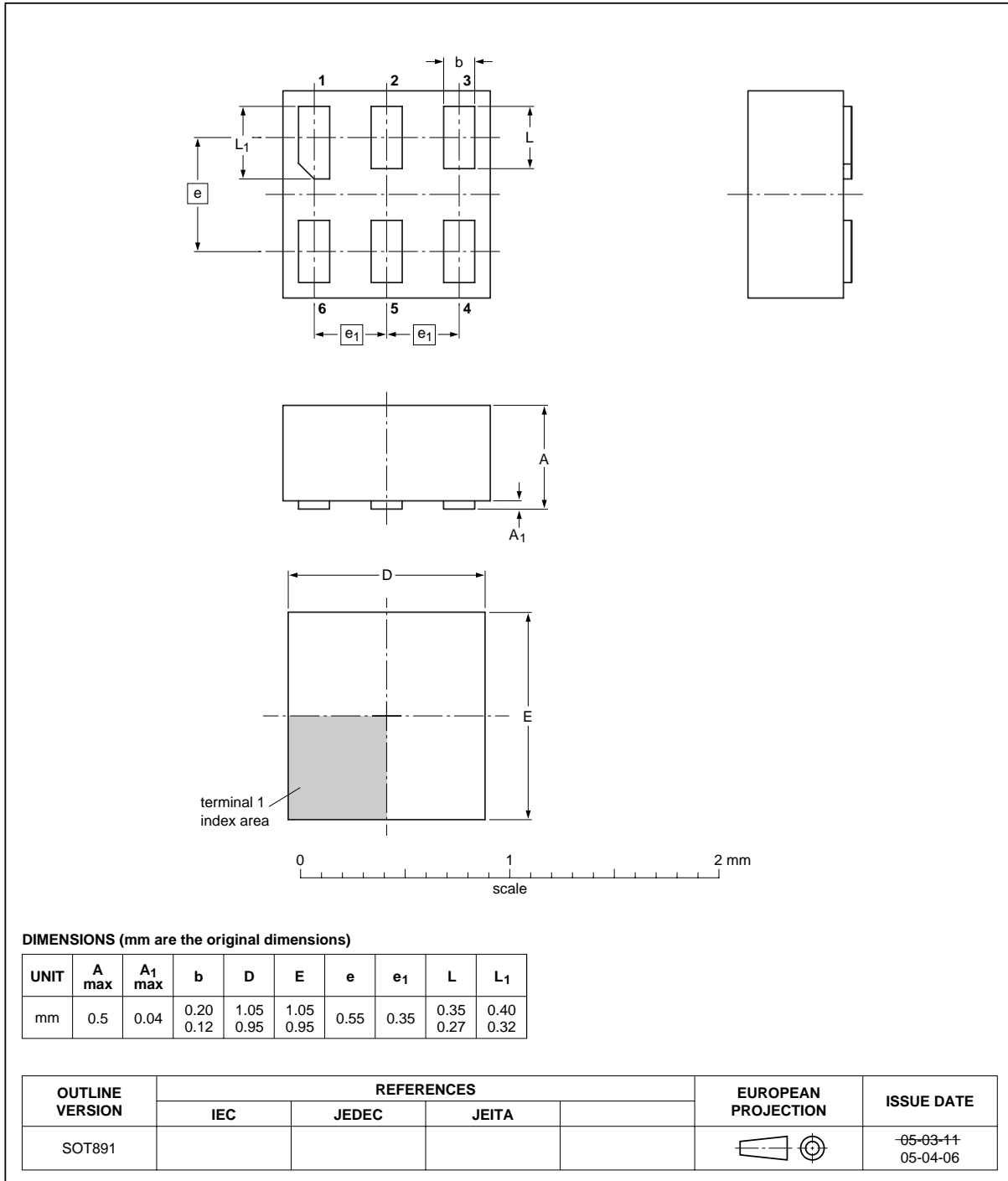


Fig 12. Package outline SOT891 (XSON6)

14. Abbreviations

Table 12. Abbreviations

| Acronym | Description |
|---------|---|
| CDM | Charged Device Model |
| CMOS | Complementary Metal Oxide Semiconductor |
| DUT | Device Under Test |
| ESD | ElectroStatic Discharge |
| HBM | Human Body Model |
| MM | Machine Model |
| TTL | Transistor-Transistor Logic |

15. Revision history

Table 13. Revision history

| Document ID | Release date | Data sheet status | Change notice | Supersedes |
|--------------|--------------|--------------------|---------------|------------|
| 74AUP1G240_1 | 20061106 | Product data sheet | - | - |

16. Legal information

16.1 Data sheet status

| Document status ^{[1][2]} | Product status ^[3] | Definition |
|-----------------------------------|-------------------------------|---|
| Objective [short] data sheet | Development | This document contains data from the objective specification for product development. |
| Preliminary [short] data sheet | Qualification | This document contains data from the preliminary specification. |
| Product [short] data sheet | Production | This document contains the product specification. |

[1] Please consult the most recently issued document before initiating or completing a design.

[2] The term 'short data sheet' is explained in section "Definitions".

[3] The product status of device(s) described in this document may have changed since this document was published and may differ in case of multiple devices. The latest product status information is available on the Internet at URL <http://www.nxp.com>.

16.2 Definitions

Draft — The document is a draft version only. The content is still under internal review and subject to formal approval, which may result in modifications or additions. NXP Semiconductors does not give any representations or warranties as to the accuracy or completeness of information included herein and shall have no liability for the consequences of use of such information.

Short data sheet — A short data sheet is an extract from a full data sheet with the same product type number(s) and title. A short data sheet is intended for quick reference only and should not be relied upon to contain detailed and full information. For detailed and full information see the relevant full data sheet, which is available on request via the local NXP Semiconductors sales office. In case of any inconsistency or conflict with the short data sheet, the full data sheet shall prevail.

16.3 Disclaimers

General — Information in this document is believed to be accurate and reliable. However, NXP Semiconductors does not give any representations or warranties, expressed or implied, as to the accuracy or completeness of such information and shall have no liability for the consequences of use of such information.

Right to make changes — NXP Semiconductors reserves the right to make changes to information published in this document, including without limitation specifications and product descriptions, at any time and without notice. This document supersedes and replaces all information supplied prior to the publication hereof.

Suitability for use — NXP Semiconductors products are not designed, authorized or warranted to be suitable for use in medical, military, aircraft, space or life support equipment, nor in applications where failure or

malfunction of a NXP Semiconductors product can reasonably be expected to result in personal injury, death or severe property or environmental damage. NXP Semiconductors accepts no liability for inclusion and/or use of NXP Semiconductors products in such equipment or applications and therefore such inclusion and/or use is at the customer's own risk.

Applications — Applications that are described herein for any of these products are for illustrative purposes only. NXP Semiconductors makes no representation or warranty that such applications will be suitable for the specified use without further testing or modification.

Limiting values — Stress above one or more limiting values (as defined in the Absolute Maximum Ratings System of IEC 60134) may cause permanent damage to the device. Limiting values are stress ratings only and operation of the device at these or any other conditions above those given in the Characteristics sections of this document is not implied. Exposure to limiting values for extended periods may affect device reliability.

Terms and conditions of sale — NXP Semiconductors products are sold subject to the general terms and conditions of commercial sale, as published at <http://www.nxp.com/profile/terms>, including those pertaining to warranty, intellectual property rights infringement and limitation of liability, unless explicitly otherwise agreed to in writing by NXP Semiconductors. In case of any inconsistency or conflict between information in this document and such terms and conditions, the latter will prevail.

No offer to sell or license — Nothing in this document may be interpreted or construed as an offer to sell products that is open for acceptance or the grant, conveyance or implication of any license under any copyrights, patents or other industrial or intellectual property rights.

16.4 Trademarks

Notice: All referenced brands, product names, service names and trademarks are the property of their respective owners.

17. Contact information

For additional information, please visit: <http://www.nxp.com>

For sales office addresses, send an email to: salesaddresses@nxp.com

18. Contents

| | | |
|-----------|---|-----------|
| 1 | General description | 1 |
| 2 | Features | 1 |
| 3 | Ordering information | 2 |
| 4 | Marking | 2 |
| 5 | Functional diagram | 2 |
| 6 | Pinning information | 3 |
| 6.1 | Pinning | 3 |
| 6.2 | Pin description | 3 |
| 7 | Functional description | 3 |
| 8 | Limiting values | 4 |
| 9 | Recommended operating conditions | 4 |
| 10 | Static characteristics | 4 |
| 11 | Dynamic characteristics | 8 |
| 12 | Waveforms | 11 |
| 13 | Package outline | 14 |
| 14 | Abbreviations | 17 |
| 15 | Revision history | 17 |
| 16 | Legal information | 18 |
| 16.1 | Data sheet status | 18 |
| 16.2 | Definitions | 18 |
| 16.3 | Disclaimers | 18 |
| 16.4 | Trademarks | 18 |
| 17 | Contact information | 18 |
| 18 | Contents | 19 |



Please be aware that important notices concerning this document and the product(s) described herein, have been included in section 'Legal information'.

© NXP B.V. 2006.

All rights reserved.

For more information, please visit: <http://www.nxp.com>

For sales office addresses, please send an email to: salesaddresses@nxp.com

Date of release: 6 November 2006

Document identifier: 74AUP1G240_1