

S.P.K. Electronics. Co., Ltd.

Fax: 886-2-2346-3939

TEL: 886-2-2346-2323

E-Mail: spktw@ms34.hinet.net

Web: <http://www.spkecl.com>



CRYSTAL OSCILLATORS

(SMD TYPE - CERAMIC)

● Application of SMD OSC:

- PCMCIA Card
- Notebook PC
- Portable PC
- HDD
- OA Terminal
- CCD
- Digital Camera
- Wireless Lan

● FEATURE

- Seam welding
- Excellent solderability
- 3 state function
- Frequency range from 1.0MHz to 125MHz

● SPECIFICATION

| MODEL | | SPK-SMA-751C | SPK-SMA-751L | SPK-SMA-751T |
|----------------------|--------|-----------------------|--------------|-------------------|
| FREQUENCY RANGE | MHz | 1.0~100 | 1.0~125 | 1.0~100 |
| FREQUENCY STABILITY | ppm | A: ±100 B: ±50 C: ±25 | | |
| TEMP RANGE: | | | | |
| OPERATING TEMP. | °C | 0~70 | | |
| STORAGE TEMP. | | -55~125 | | |
| POWER SUPPLY VOLTAGE | V DC | +5.0 ± 10% | +3.3 ± 10% | +5.0 ± 10% |
| OUTPUT LEVEL | | CMOS | | TTL |
| OUTPUT SYMMETRY | % | 40~60(at 50% V DC) | | 40~60(at 1.4V DC) |
| INPUT CURRENT | | | | |
| 10~9.99MHz | mA max | 10 | 7 | 15 |
| 10~19.99MHz | | 15 | 7 | 20 |
| 20~31.99MHz | | 25 | 12 | 30 |
| 32~49.99MHz | | 35 | 20 | 40 |
| 50~79.99MHz | | 50 | 25 | 50 |
| 80~99.99MHz | | 60 | 30 | 60 |
| 100~125MHz | | 80 | 40 | 80 |
| RISE / FALL TIME | | | | |
| 10~9.99MHz | ns max | 15 | 20 | 15 |
| 10~19.99MHz | | 15 | 15 | 15 |
| 20~31.99MHz | | 10 | 10 | 8 |
| 32~49.99MHz | | 6 | 10 | 5 |
| 50~79.99MHz | | 5 | 8 | 5 |
| 80~99.99MHz | | 5 | 5 | 5 |
| 100~125MHz | | 4 | 4 | 4 |
| OUTPUT LOAD | | 15pF | | 10TTL |

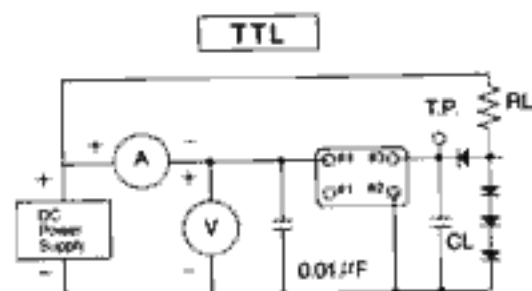
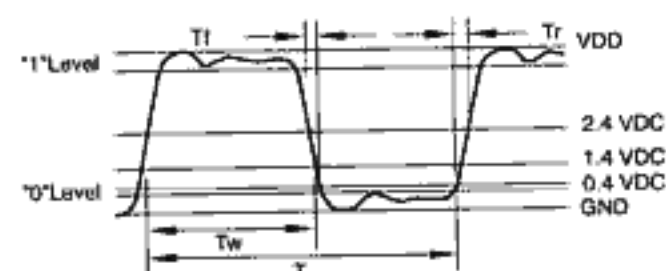
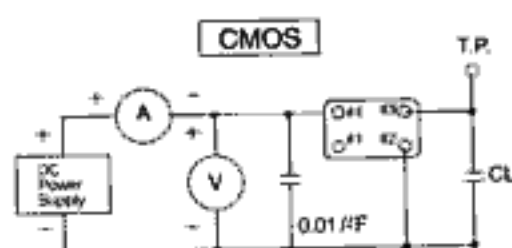
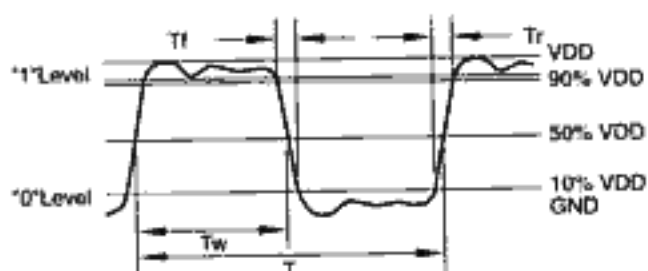
● PART NUMBERING GUIDE

| |
|-----------|
| XXX-XXX X |
| Ⓐ Ⓑ Ⓒ |

EXAMPLE: SMA751C

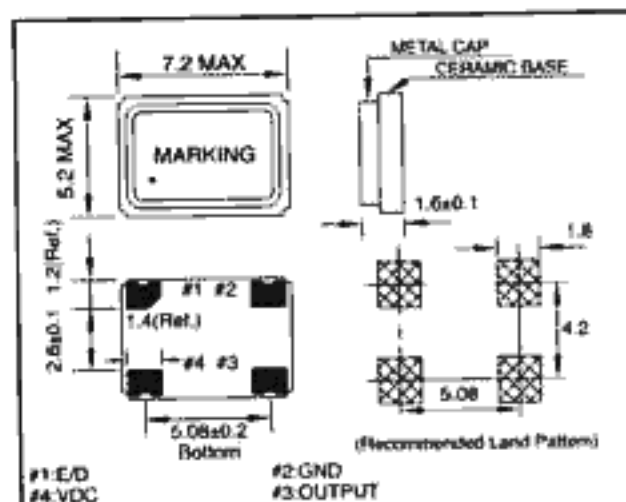
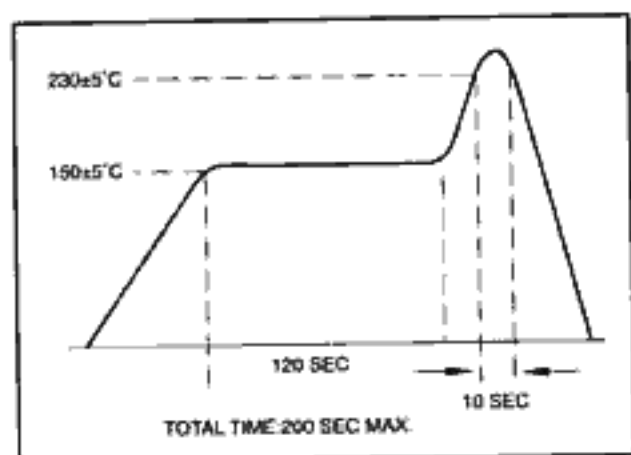
| | | |
|---|-----|-----------------------------------|
| Ⓐ | SMA | SMD OSC |
| Ⓑ | 751 | 7.0x5.0 mm |
| Ⓒ | C | C: CMOS 5V T: TTL 5V L: CMOS 3.3V |

OUTPUT WAVEFORM & TEST CIRCUIT



***Because MA series has no bypass capacitor. So, we recommend our customer to use capacitor 0.01 μ F in join Vcc and GND.

SOLDERING REFLOW & DIMENSION(mm)



#1: ENABLE / DISABLE FUNCTION

| | |
|---------------|------------------|
| INH (PIN 1) | → OUTPUT (PIN3) |
| High (Open) | → Operating |
| Low | → High impedance |

TAPE SPECIFICATION(mm)&REEL PACKING

