

NCP1835

Integrated Li-Ion Charger

NCP1835 is an integrated linear charger specifically designed to charge 1-cell Li-Ion batteries with a constant current, constant voltage (CCCV) profile. It can charge at currents of up to 1.0 A.

Its low input voltage capability, adjustable charge current, ability to maintain regulation without a battery, and its onboard thermal foldback make it versatile enough to charge from a variety of wall adapters. The NCP1835 can charge from a standard voltage-source wall adapter as a CCCV charger, or from a current limited adapter to limit power dissipation in the pass device.

Features

- Integrated Voltage and Current Regulation
- No External MOSFET, Sense Resistor or Blocking Diode Required
- Charge Current Thermal Foldback
- Integrated Pre-charge Current for Conditioning Deeply Discharged Battery
- Integrated End-of-Charge (EOC) Detection
- 1% Voltage Regulation
- 4.2 V or 4.242 V Regulated Output Voltage
- Regulation Maintained without a Battery Present
- Programmable Full Charge Current 300 – 1000 mA
- Open-Drain Charger Status and Fault Alert Flags
- 2.8 V Output for AC Present Indication and Powering Charging Subsystems
- Minimum Input Voltage of 2.4 V Allows Use of Current Limited Adapters
- Automatically Recharging if Battery Voltage Drops after Charging Cycle is Completed
- Low Profile 3x3 mm DFN Package
- Pb-Free Packages are Available

Typical Applications

- Cellular Phones
- PDAs, MP3 Players
- Stand-Alone Chargers
- Battery Operated Devices



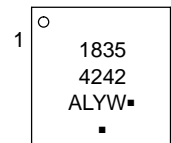
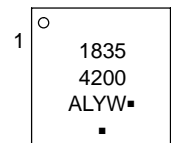
ON Semiconductor®

<http://onsemi.com>

MARKING DIAGRAMS

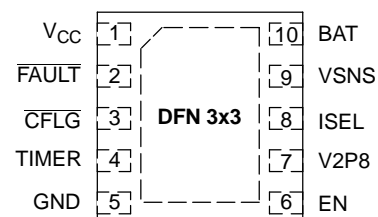


**DFN 3x3
MN SUFFIX
CASE 485C**



1835 = Device Code
4200 = 4.2 V
4242 = 4.242 V
A = Assembly Location
L = Wafer Lot
Y = Year
W = Work Week
▪ = Pb-Free Package
(Note: Microdot may be in either location)

PIN CONNECTIONS



(Top View)

ORDERING INFORMATION

See detailed ordering and shipping information in the package dimensions section on page 15 of this data sheet.

NCP1835

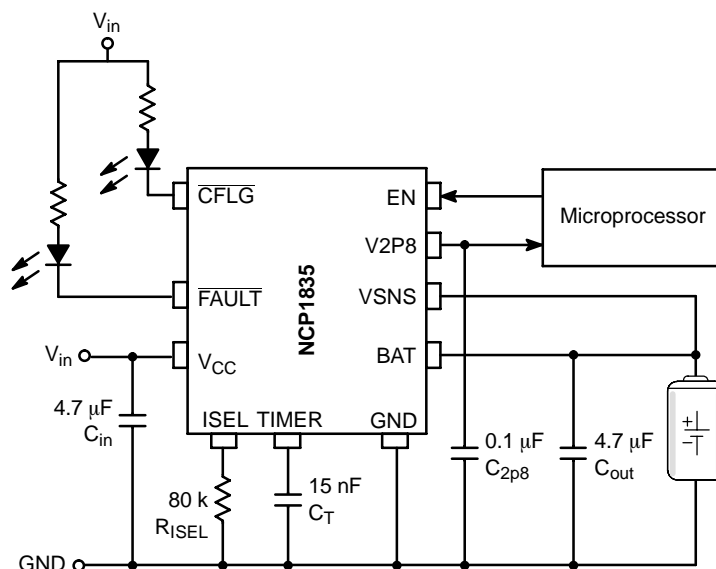


Figure 1. Typical Application Circuit

PIN FUNCTION DESCRIPTION

| Pin | Symbol | Description |
|-----|-----------------|---------------------------------------------------------------------------------------------------------------------------------------------------------------------------------------------------------------------------------------------------------------------------------------------------------------------------------------------------------------------------------------------------------------------------------------|
| 1 | V _{CC} | Input Supply Voltage. Provides power to the charger. This pin should be bypassed with at least a 4.7 µF ceramic capacitor to ground. |
| 2 | FAULT | An open-drain output indicating fault status. This pin is pulled LOW under any fault conditions. A FAULT condition resets the counter. |
| 3 | CFLG | An open-drain output indicating charging or end-of-charge states. The CFLG pin is pulled LOW when the charger is charging a battery. It is forced open when the charge current drops to I _{EOC} . This high impedance mode will be latched until a recharge cycle or a new charge cycle starts. |
| 4 | TIMER | Connecting a timing capacitor, C _{TIME} between this pin and ground to set end-of-charge timeout timer. TIMEOUT = 14 * C _{TIME} / 1.0 nF (minute). The total charge for CC and CV mode is limited to the length of TIMEOUT. Trickle Charge has a time limit of 1/8 of the TIMEOUT period. |
| 5 | GND | Ground pin of the IC. For thermal consideration, it is recommended to solder the exposed metal pad on the backside of the package to ground. |
| 6 | EN | Enable logic input. Connect the EN pin to LOW to disable the charger or leave it floating to enable the charger. |
| 7 | V2P8 | 2.8 V reference voltage output. This pin outputs a 2.8 V voltage source when an adapter is present. The maximum loading for this pin is 2.0 mA. |
| 8 | ISEL | The full charge current (I _{FCHG}) can be set by connecting a resistor, R _{ISEL} , from the ISEL pin to ground. I _{FCHG} = (0.8 * 10 ⁵ / R _{ISEL}) A, the pre-charge current I _{PC} = (0.1 * I _{FCHG}) A and the end-of-charge threshold current I _{EOC} = (0.1 * I _{FCHG}) A. For best accuracy, a resistor with 1% tolerance is recommended. |
| 9 | VSNS | Battery voltage sense pin. Connect this as close as possible to the battery input connection. |
| 10 | BAT | Charge current output. A minimum 4.7 µF capacitor is needed for stability when the battery is not attached. |

NCP1835

MAXIMUM RATINGS

| Rating | Symbol | Value | Unit |
|---------------------------------------------------------------------------------------------------------------------------------|--------------------------|--------------|-------------------------|
| Supply Voltage | V_{CC} | 7.0 | V |
| Status Flag Output Pins | V_{FAULT}, V_{CFLG} | 7.0 | V |
| Voltage Range for Other Pins | V_{IO} | 5.5 | V |
| Current Out from BAT Pin | I_O | 1.2 | A |
| Thermal Characteristics Thermal Resistance, Junction-to-Air (Note 3) Power Dissipation, $T_A = 25^\circ\text{C}$ (Note 3) | $R_{\theta JA}$ P_D | 68.5 1.09 | $^\circ\text{C/W}$ W |
| Moisture Sensitivity (Note 4) | MSL | Level 1 | |
| Operating Ambient Temperature | T_A | -20 to 70 | $^\circ\text{C}$ |
| Storage Temperature | T_{stg} | -55 to 125 | $^\circ\text{C}$ |
| ESD Human Body Model Machine Model | HBM MM | 2000 200 | V V |

Maximum ratings are those values beyond which device damage can occur. Maximum ratings applied to the device are individual stress limit values (not normal operating conditions) and are not valid simultaneously. If these limits are exceeded, device functional operation is not implied, damage may occur and reliability may be affected.

- This device series contains ESD protection and is tested per the following standards:
Human Body Model (HBM) per JEDEC standard: JESD22-A114.
Machine Model (MM) per JEDEC standard: JESD22-A115.
- Latchup Current Maximum Rating: 150 mA per JEDEC standard: JESD78.
- Measure on 1 inch sq. of 1 oz. copper area. $R_{\theta JA}$ is highly dependent on the PCB heatsink area. For example, $R_{\theta JA}$ can be 38°C/W on 1 inch sq. of 1 oz. copper area on 4 layer PCB that has 1 single signal layer with the additional 3 solid ground or power planes. The maximum package power dissipation limit must not be exceeded:

$$P_D = \frac{T_{J(max)} - T_A}{R_{\theta JA}}$$

with $R_{\theta JA} = 68.5^\circ\text{C/W}$, $T_{J(max)} = 100^\circ\text{C}$, $P_D = 1.09\text{ W}$.

- Moisture Sensitivity Level per IPC/JEDEC standard: J-STD-020A.

NCP1835

ELECTRICAL CHARACTERISTICS (Typical values are tested at $V_{CC} = 5.0$ V and room temperature, maximum and minimum values are guaranteed over 0°C to 70°C with a supply voltage in the range of 4.3 V to 6.5 V, unless otherwise noted.)

| Characteristic | Symbol | Min | Typ | Max | Unit |
|----------------|--------|-----|-----|-----|------|
|----------------|--------|-----|-----|-----|------|

V_{CC} SUPPLY

| | | | | | |
|-------------------------------------------------------------------------------------------|------------|-----|-----|------|---------------|
| Operating Supply Range | V_{CC} | 2.8 | – | 6.5 | V |
| Rising V_{CC} Threshold | V_{RISE} | 3.0 | 3.4 | 3.95 | V |
| Falling V_{CC} Lockout Threshold | V_{FALL} | 2.0 | 2.4 | 2.8 | V |
| Quiescent V_{CC} Pin Supply Current Shutdown (EN = Low) | I_{VCC} | – | 30 | – | μA |
| Normal Operation (EN = High) | I_{VCC} | – | 1.0 | – | mA |
| Battery Drain Current Manual Shutdown ($V_{CC} = 5.0$ V, $V_{SNS} = 4.0$ V, EN = Low) | I_{BMS} | – | – | 3.0 | μA |

CHARGING PERFORMANCE

| | | | | | |
|----------------------------------------------------------------------------------------------------------------------------------|------------|----------------|----------------|----------------|--------------------|
| Regulated Output Voltage in Constant Voltage (CV) Mode 4.2 V Version, $I_{CHG} = 10$ mA 4.242 V Version, $I_{CHG} = 10$ mA | V_{REG} | 4.158 4.200 | 4.200 4.242 | 4.242 4.284 | V |
| Dropout Voltage ($V_{BAT} = 3.7$ V, $I_{CHG} = 0.5$ A) | – | – | 200 | 300 | mV |
| Pre-Charge Threshold Voltage | V_{PC} | 2.52 | 2.8 | 3.08 | V |
| Pre-Charge Current ($R_{ISEL} = 80$ k Ω , $V_{BAT} = 2.0$ V) | I_{PC} | 78 | 100 | 122 | mA |
| Recommended Full Charge Current | I_{FCHG} | 300 | – | 1000 | mA |
| Full-Charge Current in Constant Current (CC) Mode ($R_{ISEL} = 80$ k Ω , $V_{BAT} = 3.7$ V) | I_{FCHG} | 0.9 | 1.0 | 1.1 | A |
| End-of-Charge Threshold ($R_{ISEL} = 80$ k Ω , $V_{BAT} = V_{REG}$) | I_{EOC} | 78 | 100 | 122 | mA |
| Recharge Voltage Threshold | V_{RECH} | 3.9 | 4.03 | 4.155 | V |
| Thermal Foldback Limit (Junction Temperature) (Note 5) | T_{LIM} | – | 100 | – | $^{\circ}\text{C}$ |

OSCILLATOR

| | | | | | |
|------------------------------------------|-----------|-----|-----|-----|----|
| Oscillation Period ($C_{TIME} = 15$ nF) | T_{OSC} | 2.4 | 3.0 | 3.6 | ms |
|------------------------------------------|-----------|-----|-----|-----|----|

STATUS FLAGS

| | | | | | |
|-----------------------------------------------------------------------------------|-------------------------------|-----|---|-----|-------------|
| $\overline{\text{CFLG}}$ Pin Recommended Maximum Operating Voltage | $V_{\overline{\text{CFLG}}}$ | – | – | 6.5 | V |
| FAULT Pin Recommended Maximum Operating Voltage | $V_{\overline{\text{FAULT}}}$ | – | – | 6.5 | V |
| $\overline{\text{CFLG}}$ Pin Sink Current ($V_{\overline{\text{CFLG}}} = 0.8$ V) | $I_{\overline{\text{CFLG}}}$ | 5.0 | – | – | mA |
| FAULT Pin Sink Current ($V_{\overline{\text{FAULT}}} = 0.8$ V) | $I_{\overline{\text{FAULT}}}$ | 5.0 | – | – | mA |

5. Guaranteed by design. Not tested in production.

TYPICAL OPERATING CHARACTERISTICS

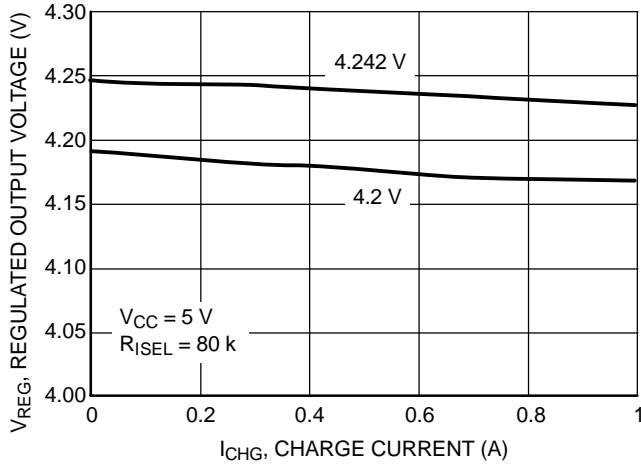


Figure 2. Regulated Output Voltage vs. Charge Current

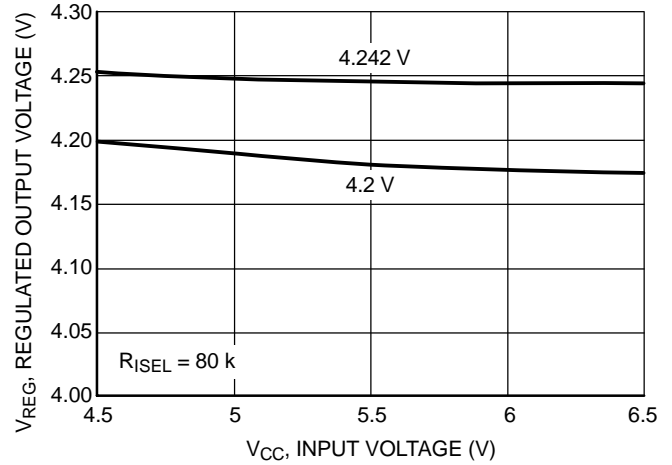


Figure 3. Regulated Output Voltage (floating) vs. Input Voltage

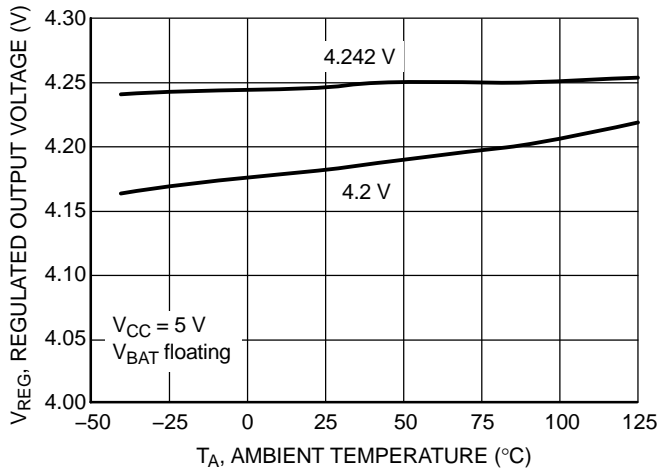


Figure 4. Regulated Output Voltage vs. Temperature

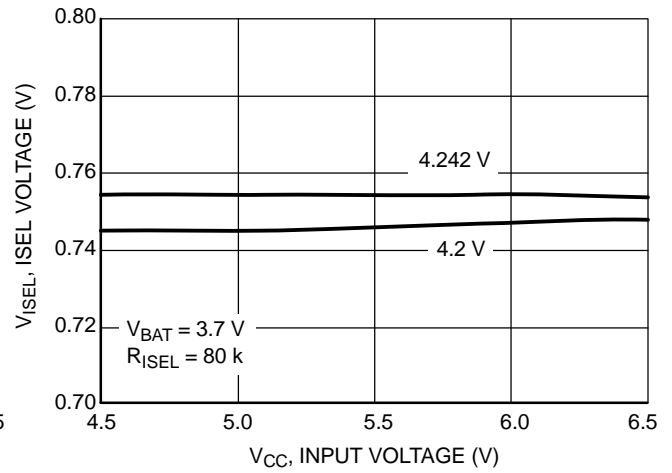


Figure 5. ISEL Voltage vs. Input Voltage

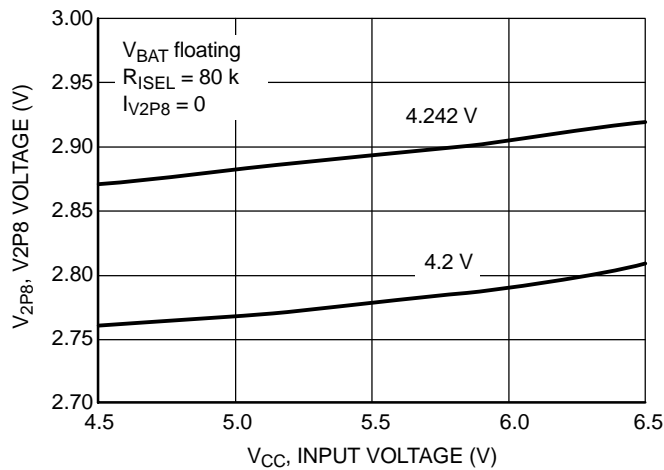


Figure 6. V2P8 Voltage vs. Input Voltage

TYPICAL OPERATING CHARACTERISTICS

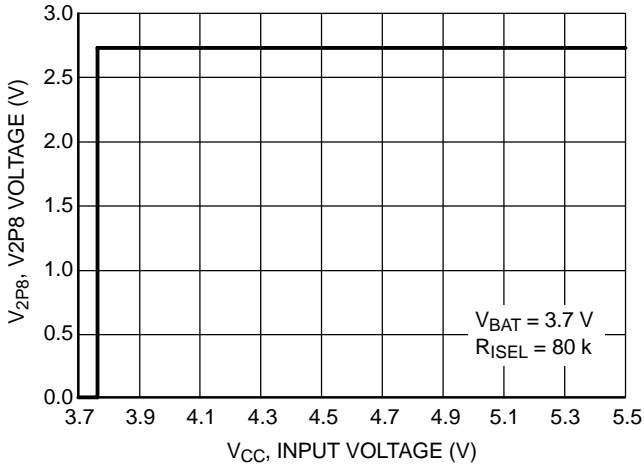


Figure 7. V2P8 Voltage vs. Input Voltage

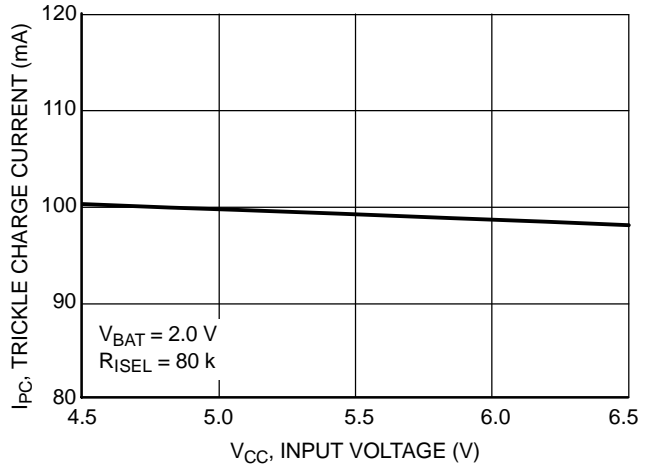


Figure 8. Trickle Charge Current vs. Input Voltage

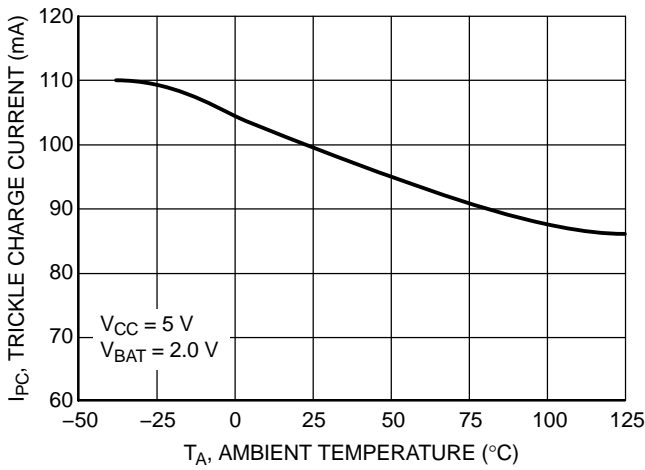


Figure 9. Trickle Charge Current vs. Temperature

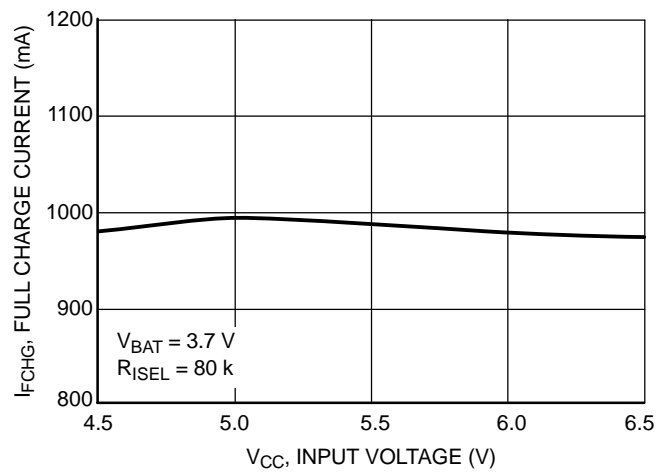


Figure 10. Full Charge Current vs. Input Voltage

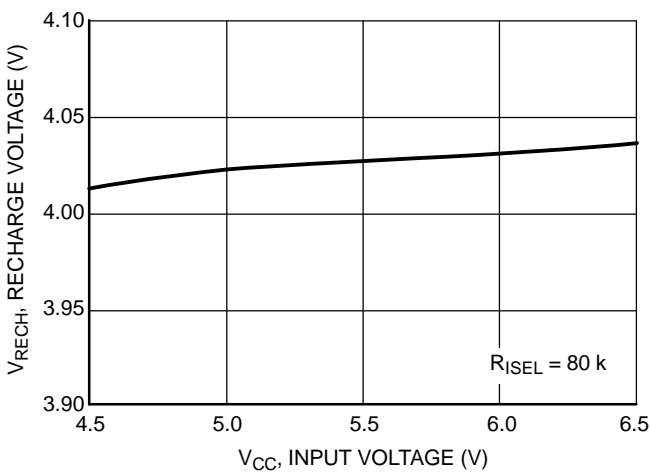


Figure 11. Recharge Voltage vs. Input Voltage

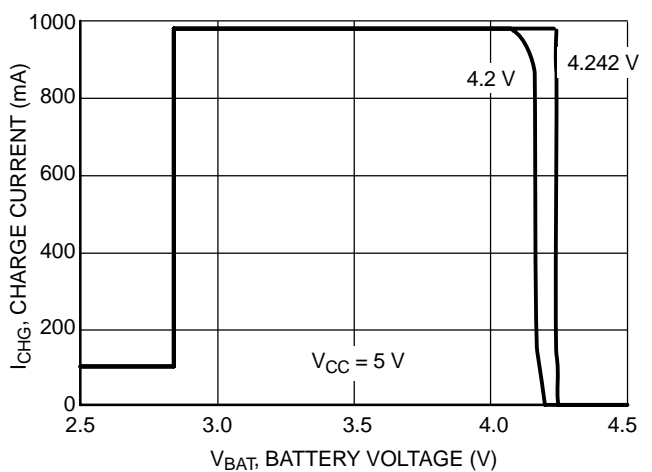


Figure 12. Charge Current vs. Battery Voltage

DETAILED OPERATING DESCRIPTION

Overview

Rechargeable Li-Ion/Polymer batteries are normally charged with a constant current (CC) until the terminal voltage reaches a fixed voltage threshold, at which point a constant voltage (CV) is applied and the current drawn by the battery decays. The charging rate is determined by the specific rating of the battery. For example, if the battery is rated at 800 mA-hours, then the recommended maximum charge rate is 800 mA. For a severely discharged cell, it takes approximately 2.5–3.5 hours to recharge the battery at the maximum rate. So, when one charges at less than the maximum charge rate, the recharge time increases. Also, the battery should not be continuously charged or the battery could age faster than necessary. Because of this, Li-Ion charging systems need to stop charging within a prescribed time limit regardless of the charge rate.

The NCP1835 is a fully integrated, stand-alone 1-cell Li-Ion charger which performs the primary battery charging functions and includes a timer which will terminate charging if the battery has not completed charging within a prescribed time period. The charging rate is user programmable up to 1.0 A and the end-of-charge timer is also programmable. The NCP1835 has a thermal foldback loop which reduces the charge rate if the junction temperature is exceeded. The device also includes several outputs which can be used to drive LED indicators or interface to a microprocessor to provide status information. The adapter providing power to the charger can be a standard fixed output voltage such as a 5.0 V wall adapter or it can be a simple current limited adapter.

The NCP1835 comes in two versions with output voltage regulation thresholds of 4.2 or 4.242 V depending on the requirements of the specific battery pack being used. The user determines the charge current by selecting the resistor R_{ISEL} and determines the length of the end-of-charge timeout timer by selecting the capacitor, C_{TIME} .

Charging Operation

Figure 13 outlines the charging algorithm of the NCP1835 and Figure 14 graphically illustrates this. When the charger is powered up and the input voltage rises above the power-on, rising threshold (nominally 3.4 V), the charger initiates the charging cycle.

The NCP1835 first determines the cell voltage. If it is less than the pre-charge threshold (2.8 V), the IC

recognizes the battery as severely discharged. In this state, the NCP1835 pre-conditions (trickle charges) the battery by charging it at 10% of the full charge rate (I_{PC}). This slow charge prevents the battery from being damaged from high fast charge currents when it is in a deeply discharged state. The battery voltage should be trickle charged up to 2.8 V before 1/8 of the preset end-of-charge time is expired. If it cannot reach this voltage, than the battery is possibly shorted or damaged. Therefore, the NCP1835 stops charging and the pre-charge timeout signal asserts the \overline{FAULT} flag.

Once the cell voltage crosses the pre-charge threshold, the device will transition to normal (full-rate) charging at 100% of the programmed full rate charge current (I_{FCHG}). As the NCP1835 charges the battery, the cell voltage rises until it reaches the V_{REG} threshold, (4.2 or 4.242 V). At the maximum charge rate, it normally takes about 1 hour to reach this point from a fully discharged state, and the battery will be approximately 70–80% recharged. At this point, the charge transitions to constant voltage mode where the IC forces the battery to remain at a constant voltage, V_{REG} . During this constant voltage state, the current required to maintain V_{REG} steadily decreases as the battery approaches full charge. Charge current eventually falls to a very low value as the battery approaches a fully charged condition.

The NCP1835 monitors the current into the battery until it drops to 10% of the full charge rate. This is the End-of-Charge (EOC) threshold. Normally it takes 1.5–2.5 hours to reach this point. Once the NCP1835 reaches end-of-charge it opens the \overline{CFLG} pin and enters the EOC state. The IC continues to charge the battery until it reaches $TIMEOUT$. At that point, the NCP1835 stops charging. If the system does not reach EOC during the $TIMEOUT$ period, the NCP1835 views this as a system fault and asserts the \overline{FAULT} flag. If the battery voltage drops below the recharge threshold (which can occur if the battery is loaded), the IC reinitializes the charging sequence and begins a new charge cycle. The recharge voltage threshold, V_{RECH} , is nominally 4.03 V.

In the inhibit state, the NCP1835 continues to monitor the battery voltage, but does not charge the battery. Again, if the battery voltage drops below the recharge threshold the IC reinitializes the charging sequence and begins a new charge cycle.

Charging Flow Chart

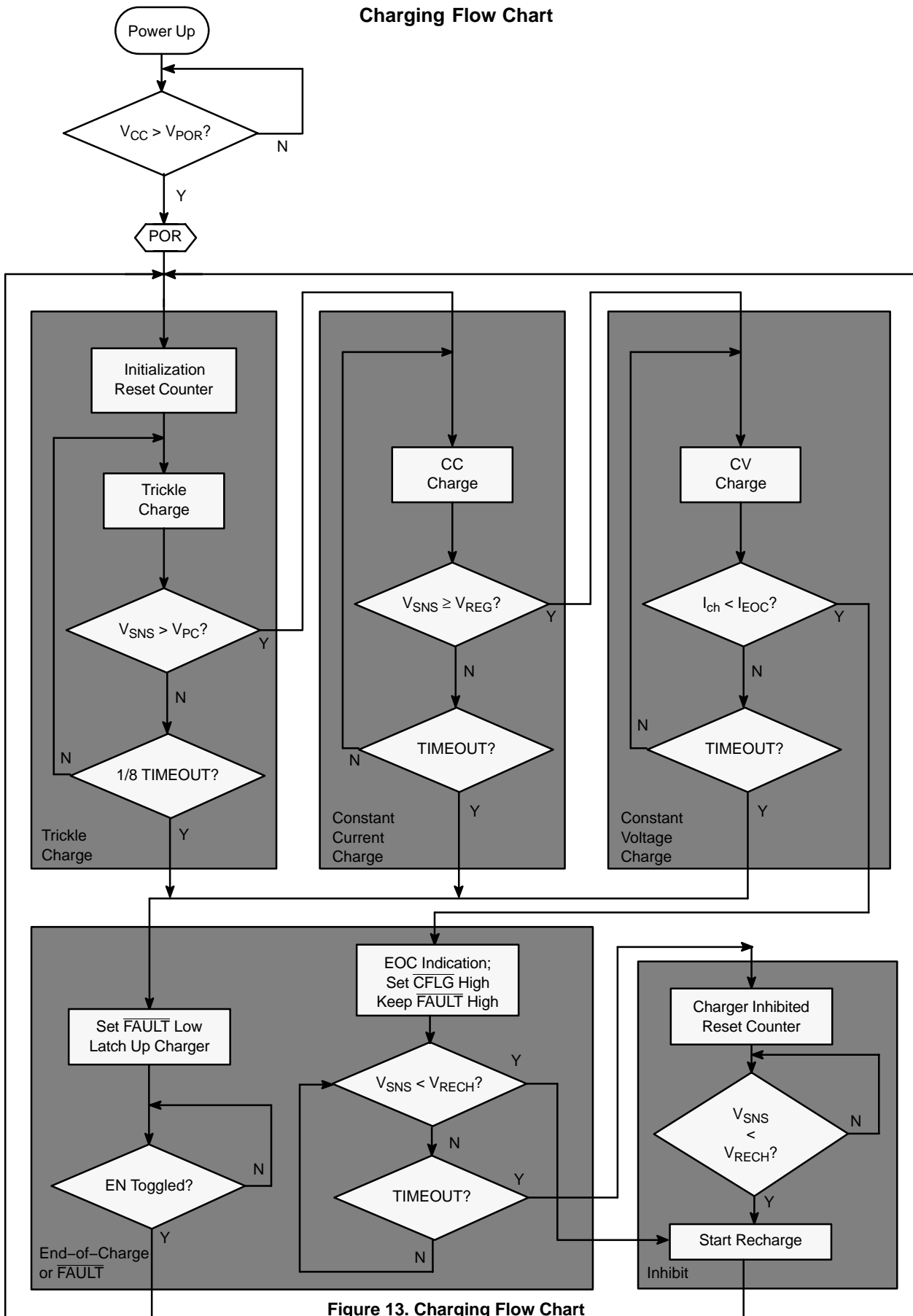


Figure 13. Charging Flow Chart

NCP1835

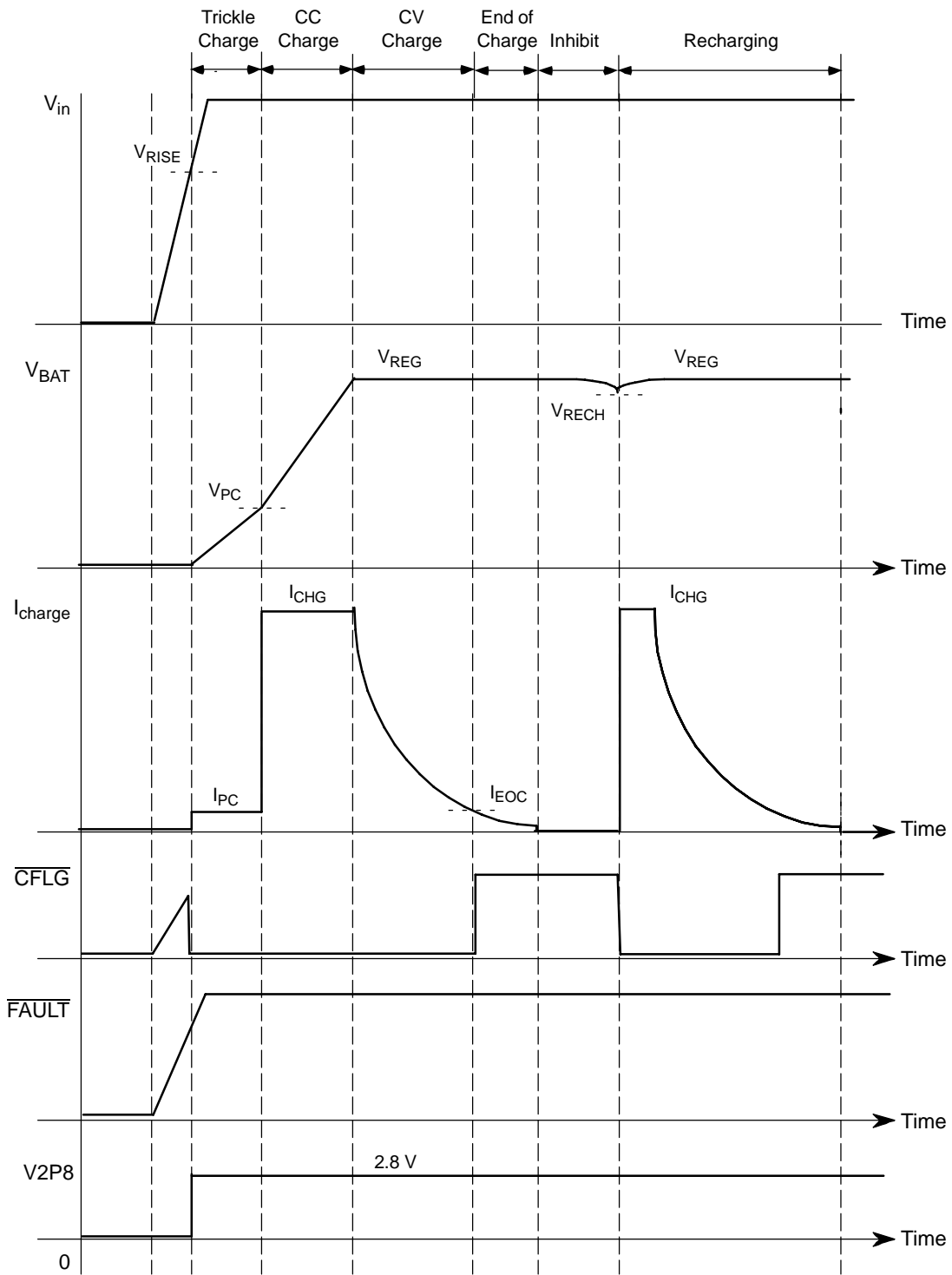


Figure 14. Typical Charging Diagram

Table 1. Charge Status

| Condition | CFLG | FAULT |
|------------------------------------------------------------------------|------|-------|
| Trickle, Constant Current and Constant Voltage Charge | Low | High |
| End-of-Charge or Shutdown Mode | High | High |
| Timeout Fault, $V_{ISEL} < 0.35\text{ V}$ or $V_{ISEL} > 1.4\text{ V}$ | High | Low |

Charge Status Indicator ($\overline{\text{CFLG}}$)

$\overline{\text{CFLG}}$ is an open-drain output that indicates battery charging or End-of-Charge (EOC) status. It is pulled low when charging in constant current mode and constant voltage mode. It will be forced to a high impedance state when the charge current drops to I_{EOC} . When the charger is in shutdown mode, $\overline{\text{CFLG}}$ will also stay in the high impedance state.

Fault Indicator ($\overline{\text{FAULT}}$)

$\overline{\text{FAULT}}$ is an open-drain output that indicates that a charge fault has occurred. It has two states: low or high impedance. In a normal charge cycle, it stays in a high impedance state. At fault conditions, it will be pulled low and terminate the charge cycle. A timeout fault occurs when the full charge or pre-charge timeouts are violated, or if the voltage on ISEL is greater than 1.4 V or lower than 0.35 V. There are two ways to get the charger out of a fault condition and back to a normal charge cycle. One can either toggle the EN pin from GND to a floating state or reset the input power supply.

Adapter Present Indicator (V2P8)

V2P8 is an input power supply presence indicator. When the input voltage, V_{CC} , is above the power on threshold (V_{RISE} , nominally 3.4 V) and is also 100 mV above the battery voltage, it provides a 2.8 V reference voltage that can source up to 2.0 mA. This voltage can also be used to power a microprocessor I/O.

Enable/Disable (EN)

Pulling the EN pin to GND disables the NCP1835. In shutdown mode, the internal reference, oscillator, and control circuits are all turned off. This reduces the battery drain current to less than 3.0 μA and the input supply current to 30 μA . Floating the EN pin enables the charger.

Thermal Foldback

An internal thermal foldback loop reduces the programmed charge current proportionally if the die temperature rises above the preset thermal limit (nominally 100°C). This feature provides the charger protection from over heating or thermal damage. Figure 15 shows the full charge current reduction due to die temperature increase across the thermal foldback limit. For a charger with a 1.0 A constant charge current, the charge current starts decreasing when the die temperature hits 100°C and is reduced to zero when the die temperature rises to 110°C.

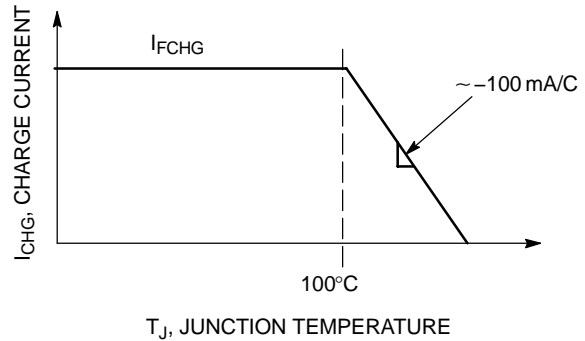


Figure 15. Full Charge Current vs. Junction Temperature

APPLICATION INFORMATION

Input and Output Capacitor Selection

A 4.7 μF or higher value ceramic capacitor is recommended for the input bypass capacitor. For the output capacitor, when there is no battery inserted and the NCP1835 is used as an LDO with 4.2 V or 4.242 V output voltage, a 4.7 μF or higher value tantalum capacitor is recommended for stability. With the battery attached, the output capacitor can be any type with the value higher than 0.1 μF.

R_{ISEL} Resistor Selection for Programming Charge Current

A single resistor, R_{ISEL}, between the ISEL pin and ground programs the pre-charge current, full charge current, and end-of-charge detection threshold. The nominal voltage of ISEL is 0.8 V. The charge current out of BAT pin is 100,000 times the current out of ISEL pin. Therefore, the full charge current (I_{FCHG}) is:

$$I_{FCHG} = 100,000 \times \frac{0.8}{R_{ISEL}} \text{ (A)} \quad \text{(eq. 1)}$$

I_{PC} and I_{EOC} are 10% of the value programmed above with the R_{ISEL} resistor.

The following table and curves show the selection of the resistance value for desired currents.

Table 2. Charge Current vs. R_{ISEL}

| I _{FCHG} (mA) | I _{PC} / I _{EOC} (mA) | R _{ISEL} (kΩ) |
|------------------------|-----------------------------------------|------------------------|
| 300 | 30 | 267 |
| 500 | 50 | 160 |
| 600 | 60 | 133.3 |
| 700 | 70 | 114.3 |
| 800 | 80 | 100 |
| 900 | 90 | 88.9 |
| 1000 | 100 | 80 |

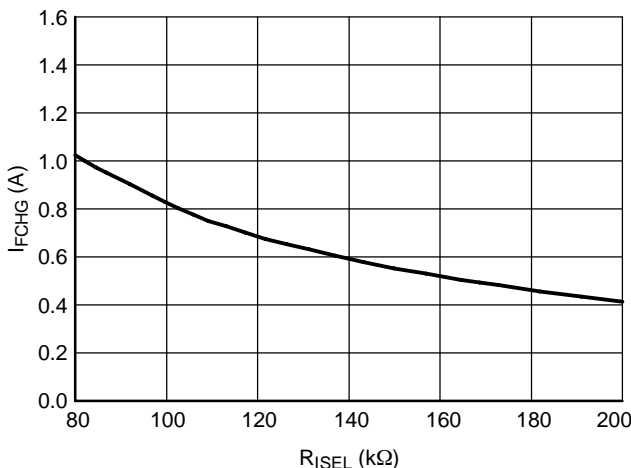


Figure 16. Full-Charge Current (I_{FCHG}) vs. Current Select Resistor (R_{ISEL})

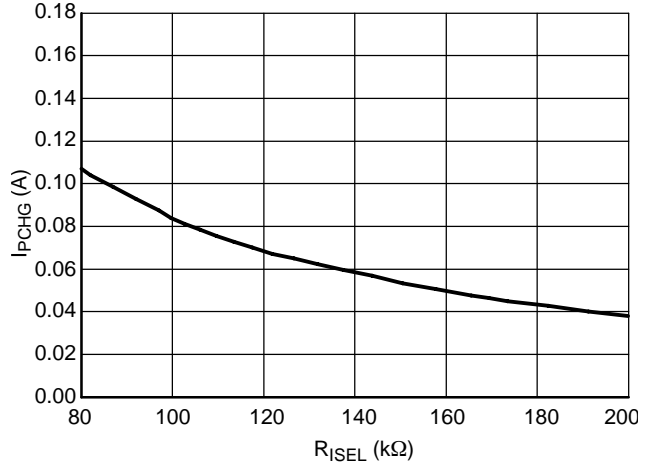


Figure 17. Pre-Charge Current (I_{PCHG}) vs. Current Select Resistor (R_{ISEL})

C_{TIME} Selection for Programming Charge Time

The NCP1835 offers an end-of-charge timeout timer to prevent the battery from continuously charging which can cause premature aging or safety issues. The timing capacitor between TIMER pin and ground, C_{TIME}, sets the end-of-charge time, TIMEOUT, and the pre-charge timeout. This capacitor is required for proper device operation.

The internal oscillator charges C_{TIME} to 1.2 V and then discharges it to 0.6 V with 6 μA current in one period. Therefore, the period of the oscillator is:

$$T_{OSC} = 2 \times \frac{C_{TIME} \times dV_c}{I_C} = 0.2 \times 10^6 \times C_{TIME} \text{ (sec)} \quad \text{(eq. 2)}$$

A 22–binary counter counts every oscillator period until it reaches the maximum number corresponding to end-of-charge time, TIMEOUT.

$$TIMEOUT = 2^{22} \times T_{OSC} = 14 \times \frac{C_{TIME}}{1 \text{ nF}} \text{ (minute)} \quad \text{(eq. 3)}$$

The NCP1835 will terminate charging and give a timeout signal if the battery has not completed charging within the TIMEOUT period. The timeout signal then forces the FAULT pin low.

The following Table 3 shows the desired TIMEOUT vs. C_{TIME} sizes. The C_{TIME} is required for proper device operation.

Table 3. TIMEOUT vs. C_{TIME} Size

| C _{TIME} (nF) | TIMEOUT (minute) |
|------------------------|------------------|
| 0.47 | 6.6 |
| 1 | 14 |
| 5.6 | 78 |
| 8.2 | 115 |
| 10 | 140 |
| 15 | 210 |
| 33 | 462 |
| 56 | 784 |

Thermal Considerations

The NCP1835 is housed in a thermally enhanced 3x3 mm DFN package. In order to deliver the maximum power dissipation under all conditions, it is very important that the user solders exposed metal pad under the package to the ground copper area and then connect this area to a ground plane through thermal vias. This can greatly reduce the thermal impedance of the device and further enhance its power dissipation capability and thus its output current capability.

Charging with Constant Voltage Adapters or Current Limited Adapters

The NCP1835 can be powered from two types of regulated adapters: a traditional constant voltage type or a current limited type. Figure 18 illustrates the operation of

the linear charger powered with a standard constant voltage adapter. The power dissipation in the linear charger is:

$$P_{dis} = (V_{CC} - V_{BAT}) \times I_{CHG} \quad (eq. 4)$$

The maximum power dissipation P1 happens at the beginning of a full current charge, since this is the point that the power supply and the battery voltage have the largest difference. As the battery voltage rises during charging, the power dissipation drops. After entering the constant voltage mode, the power dissipation drops further due to the decreasing charge current. The maximum power that the linear charger can dissipate is dependent on the thermal resistance of the device. In case the device can not handle the maximum power P1, the thermal foldback loop reduces the charge current which limits the power dissipation to the sustained level P2. Figure 18 shows this.

Using the adapter’s current limit can provide better thermal performance than the above example. A current limited adapter operates as a constant voltage adapter before the charge current reaches the current limit. I_{LIM} must be less than the programmed full charge current I_{FCHG}. Once the current limit is reached, the adapter will source the current limit I_{LIM} while its output voltage will drop to follow the battery voltage. If the application uses the adapter to power its systems while the battery is being charged, this drooping voltage can be an issue.

The worst case power dissipation with a current limited adapter occurs at the beginning of the constant voltage mode, which is shown at point P3 in Figure 19. If P3 is higher than P2, the maximum power dissipation that the charger can handle, then the thermal foldback function will be activated.

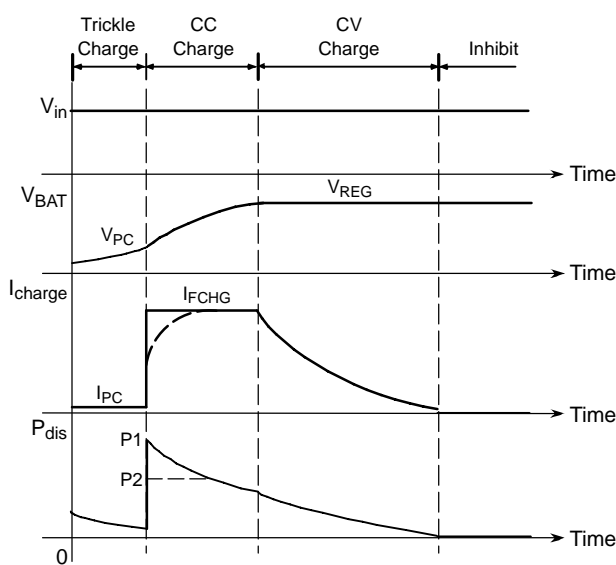


Figure 18. Typical Charge Curves with a Constant Voltage Adapter

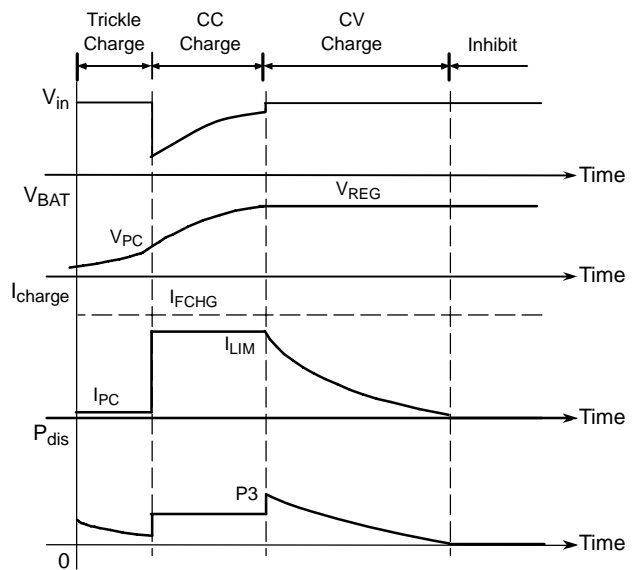


Figure 19. Typical Charge Curves with a Current Limited Adapter

PCB Layout Recommendations

The recommended footprint for the 3x3 mm DFN package is included on the Package Dimension page. It is critical that the exposed metal pad is properly soldered to the ground copper area and then connected to a ground plane through thermal vias. The maximum recommended thermal via diameter is 12 mils (0.305 mm). Limited by the size of the pad, six thermal vias should allow for proper thermal regulation without sacrificing too much copper area within the pad. The copper pad is the primary heatsink and should be connected to as much top layer metal as possible to minimize the thermal impedance. Figure 20 illustrates graphically the recommended connection for the exposed pad with vias.

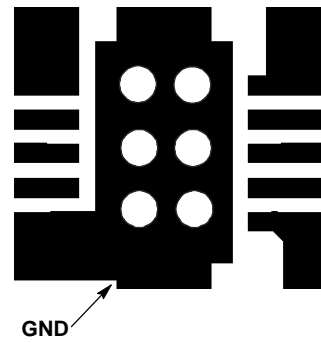


Figure 20. Recommended Footprint

The following is a NCP1835 Demo Board Schematic, Layout, and suggested Bill of Materials.

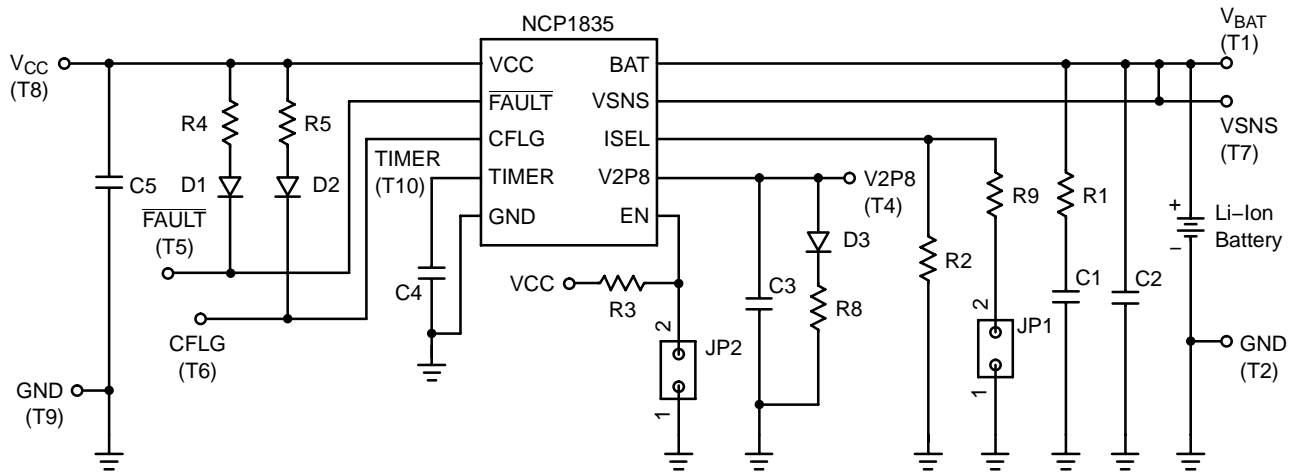


Figure 21. Demo Board Schematic

NCP1835

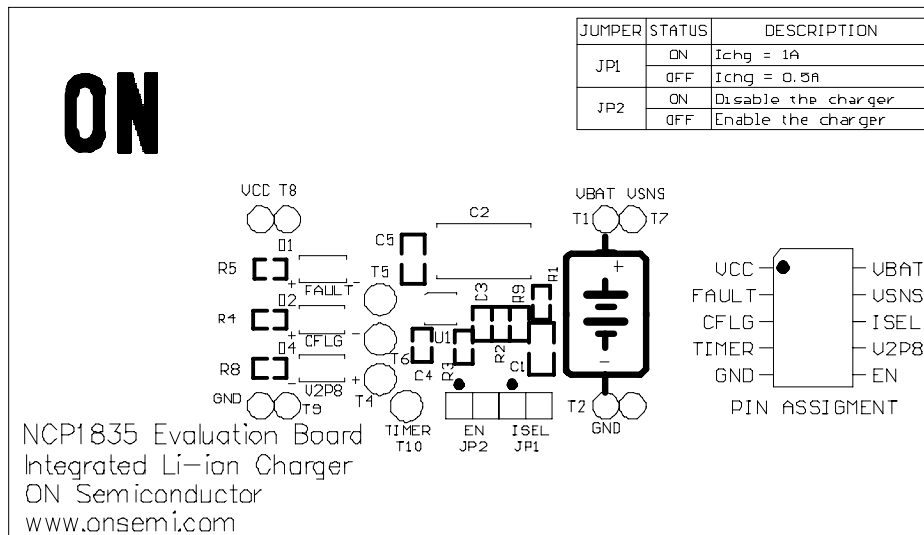


Figure 22. Silkscreen Layer

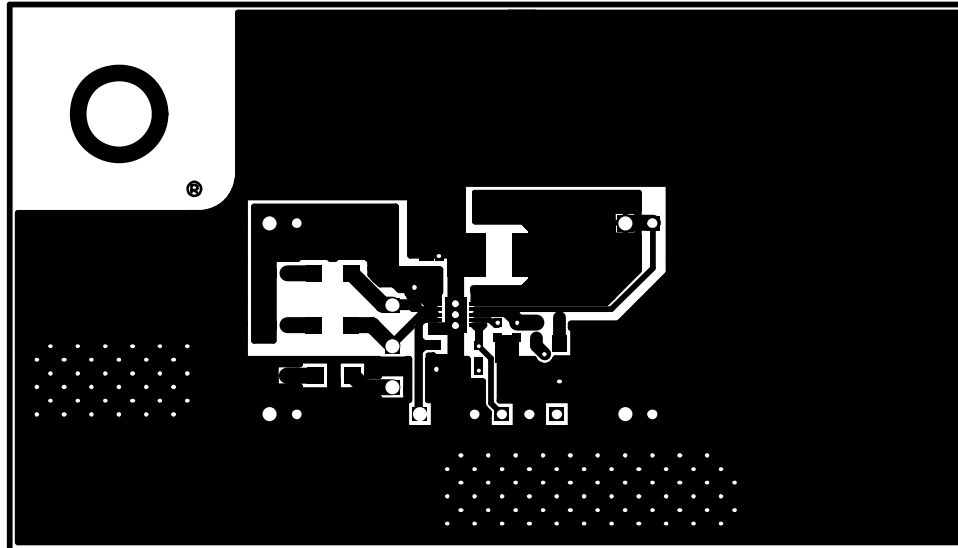


Figure 23. Top Layer

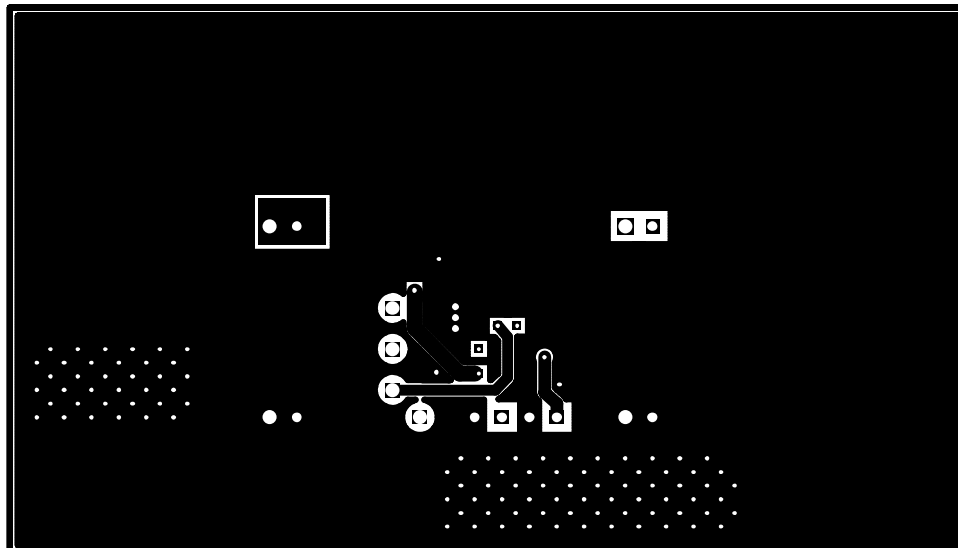


Figure 24. Bottom Layer

NCP1835

Table 4. Bill of Materials

| Item | Qty. | Part Description | Designators | Suppliers | Part Number |
|------|------|----------------------------------------------------------------------|----------------------------|------------------|----------------|
| 1 | 1 | NCP1835 Integrated Li-Ion Charger (DFN-10) | U1 | ON Semiconductor | NCP1835 |
| 2 | 1 | Chip Resistor $\pm 1\% 0 \Omega$ (0603) | R1 | Vishay | CRCW06030R00F |
| 3 | 2 | Chip Resistor $\pm 1\% 160 \text{ k}\Omega$ (0603) | R2, R9 | Vishay | CRCW06031603F |
| 4 | 1 | Chip Resistor $\pm 1\% 100 \text{ k}\Omega$ (0603) | R3 | Vishay | CRCW06031003F |
| 5 | 2 | Chip Resistor $\pm 1\% 1.0 \text{ k}\Omega$ (0603) | R4, R5 | Vishay | CRCW06031001F |
| 6 | 1 | Chip Resistor $\pm 1\% 432 \Omega$ (0603) | R8 | Vishay | CRCW06034320F |
| 8 | 1 | Chip Capacitor $1.0 \mu\text{F}/16 \text{ V}$, $\pm 20\%$ (0805) | C1 | Panasonic | ECJGVB1C105M |
| 9 | 1 | Chip Capacitor $4.7 \mu\text{F}/10 \text{ V}$, $\pm 20\%$ (3528-21) | C2 | Kemet | T491B475K010AS |
| 10 | 1 | Chip Capacitor $0.1 \mu\text{F}/10 \text{ V}$, $\pm 10\%$ (0402) | C3 | Panasonic | ECJ0EB1A104K |
| 11 | 1 | Chip Capacitor $15 \text{ nF}/16 \text{ V}$, $\pm 10\%$ (0402) | C4 | Panasonic | ECJ0EB1C153K |
| 12 | 1 | Chip Capacitor $4.7 \mu\text{F}/25 \text{ V}$, $\pm 20\%$ (0805) | C5 | Panasonic | ECJ2FB1E475M |
| 13 | 1 | SMT Chip LED Red | D1 | Agilent | HSMH-C150 |
| 14 | 1 | SMT Chip LED Green | D2 | Agilent | HSMG-C150 |
| 15 | 1 | SMT Chip LED Yellow | D4 | Agilent | HSMY-C150 |
| 16 | 5 | Test Pin | T1, T2, T7, T8, T9, T10 | AMP/Tyco | 4-103747-0 |
| 17 | 2 | Header Pin Pinch = 2.54 mm | JP1, JP2 | AMP/Tyco | 4-103747-0 |

ORDERING INFORMATION

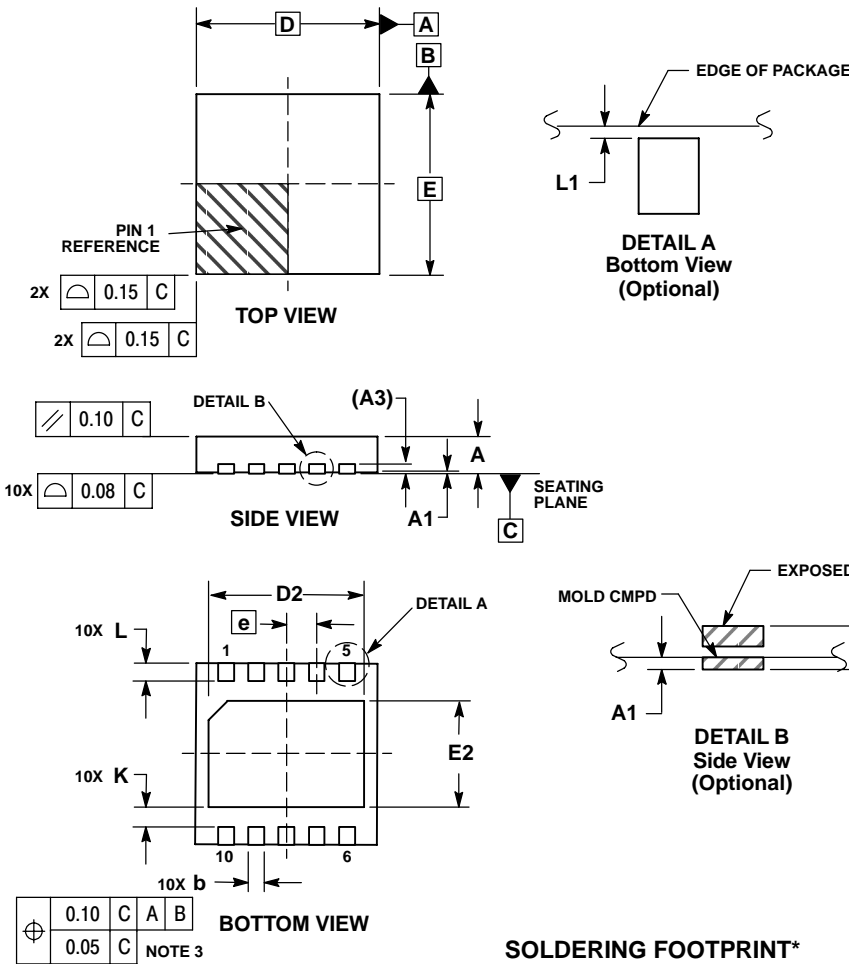
| Device | Voltage Option | Package | Shipping† |
|----------------|----------------|---------------------|--------------------|
| NCP1835MN20R2 | 4.2 V | DFN-10 | 3000 / Tape & Reel |
| NCP1835MN20R2G | 4.2 V | DFN-10 (Pb-Free) | 3000 / Tape & Reel |
| NCP1835MN24T2 | 4.242 V | DFN-10 | 3000 / Tape & Reel |
| NCP1835MN24T2G | 4.242 V | DFN-10 (Pb-Free) | 3000 / Tape & Reel |

†For information on tape and reel specifications, including part orientation and tape sizes, please refer to our Tape and Reel Packaging Specifications Brochure, BRD8011/D.

NCP1835

PACKAGE DIMENSIONS

DFN10, 3 x 3mm, 0.5mm Pitch
CASE 485C-01
ISSUE A

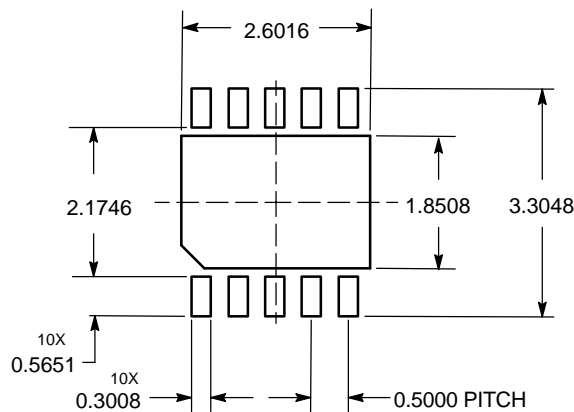


NOTES:

1. DIMENSIONING AND TOLERANCING PER ASME Y14.5M, 1994.
2. CONTROLLING DIMENSION: MILLIMETERS.
3. DIMENSION b APPLIES TO PLATED TERMINAL AND IS MEASURED BETWEEN 0.25 AND 0.30 MM FROM TERMINAL.
4. COPLANARITY APPLIES TO THE EXPOSED PAD AS WELL AS THE TERMINALS.
5. TERMINAL b MAY HAVE MOLD COMPOUND MATERIAL ALONG SIDE EDGE. MOLD FLASHING MAY NOT EXCEED 30 MICRONS ONTO BOTTOM SURFACE OF TERMINAL b.
6. DETAILS A AND B SHOW OPTIONAL VIEWS FOR END OF TERMINAL LEAD AT EDGE OF PACKAGE.


| MILLIMETERS | | |
|-------------|----------|------|
| DIM | MIN | MAX |
| A | 0.80 | 1.00 |
| A1 | 0.00 | 0.05 |
| A3 | 0.20 REF | |
| b | 0.18 | 0.30 |
| D | 3.00 BSC | |
| D2 | 2.45 | 2.55 |
| E | 3.00 BSC | |
| E2 | 1.75 | 1.85 |
| e | 0.50 BSC | |
| K | 0.19 TYP | |
| L | 0.35 | 0.45 |
| L1 | 0.00 | 0.03 |

SOLDERING FOOTPRINT*



DIMENSIONS: MILLIMETERS

*For additional information on our Pb-Free strategy and soldering details, please download the ON Semiconductor Soldering and Mounting Techniques Reference Manual, SOLDERRM/D.

ON Semiconductor and  are registered trademarks of Semiconductor Components Industries, LLC (SCILLC). SCILLC reserves the right to make changes without further notice to any products herein. SCILLC makes no warranty, representation or guarantee regarding the suitability of its products for any particular purpose, nor does SCILLC assume any liability arising out of the application or use of any product or circuit, and specifically disclaims any and all liability, including without limitation special, consequential or incidental damages. "Typical" parameters which may be provided in SCILLC data sheets and/or specifications can and do vary in different applications and actual performance may vary over time. All operating parameters, including "Typicals" must be validated for each customer application by customer's technical experts. SCILLC does not convey any license under its patent rights nor the rights of others. SCILLC products are not designed, intended, or authorized for use as components in systems intended for surgical implant into the body, or other applications intended to support or sustain life, or for any other application in which the failure of the SCILLC product could create a situation where personal injury or death may occur. Should Buyer purchase or use SCILLC products for any such unintended or unauthorized application, Buyer shall indemnify and hold SCILLC and its officers, employees, subsidiaries, affiliates, and distributors harmless against all claims, costs, damages, and expenses, and reasonable attorney fees arising out of, directly or indirectly, any claim of personal injury or death associated with such unintended or unauthorized use, even if such claim alleges that SCILLC was negligent regarding the design or manufacture of the part. SCILLC is an Equal Opportunity/Affirmative Action Employer. This literature is subject to all applicable copyright laws and is not for resale in any manner.

PUBLICATION ORDERING INFORMATION

LITERATURE FULFILLMENT:

Literature Distribution Center for ON Semiconductor
P.O. Box 61312, Phoenix, Arizona 85082-1312 USA
Phone: 480-829-7710 or 800-344-3860 Toll Free USA/Canada
Fax: 480-829-7709 or 800-344-3867 Toll Free USA/Canada
Email: orderlit@onsemi.com

N. American Technical Support: 800-282-9855 Toll Free
USA/Canada

Japan: ON Semiconductor, Japan Customer Focus Center
2-9-1 Kamimeguro, Meguro-ku, Tokyo, Japan 153-0051
Phone: 81-3-5773-3850

ON Semiconductor Website: <http://onsemi.com>

Order Literature: <http://www.onsemi.com/litorder>

For additional information, please contact your
local Sales Representative.