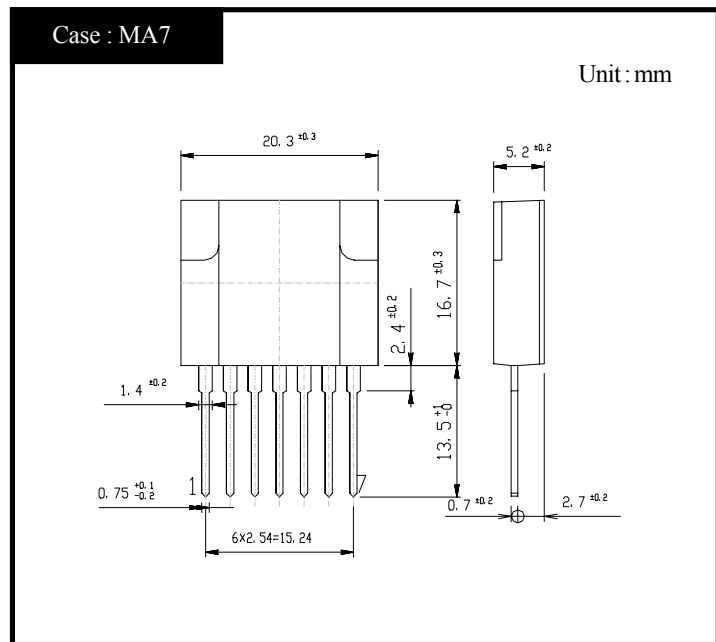


# MA1050

## OUTLINE DIMENSIONS



## RATINGS

### ●Absolute Maximum Ratings

Item	Symbol	Conditions	Ratings		Unit
			P Class	N Class	
Storage Temperature	T <sub>stg</sub>		-30~125	-30~125	°C
Operating Temperature	T <sub>op</sub>	Case Temperature	-20~125	-20~125	°C
Junction Temperature	T <sub>j</sub>		150	150	°C
Peak Input Voltage	V <sub>in</sub>	②+,④-,Fig.1 is Measurement Circuit of Peak Input Voltage V <sub>in</sub> and Collector Cutoff Current I <sub>CEX</sub> .	850	850	V
Input Current	I <sub>in</sub>	Pulse Pulse Width 150 μs MAX, Duty 1/2, Sawtooth Wave, Peak Value, ②+,④-	6	6	A
Maximum Operating Frequency	f(max)		200	200	kH <sub>z</sub>
Maximum Power Dissipation	P <sub>D</sub>	T <sub>a</sub> =25°C	3	3	W
	P <sub>D</sub>	Heatsink T <sub>c</sub> =100°C	20	20	W
Dielectric Strength	V <sub>dis</sub>	Terminals To Case AC 1 min	2	2	kV
Insulation Resistance		Terminals To Case 500VDC	100	100	MΩ
Fold Back Control Voltage	V <sub>CONT(max)</sub>	Fold Control Resistance=0Ω Duty 1/2, ④,⑦	±8	±8	V
Fold Back Control Current	I <sub>CONT(max)</sub>	④-,⑥+	100	100	mA

### ●Electrical Characteristics (T<sub>c</sub>=25°C)

Item	Symbol	Conditions	Ratings		Unit
			P Class	N Class	
Q1	Collector Cutoff Current	I <sub>CEX</sub>	V <sub>CE</sub> =850V, Fig.1 is Measurement Circuit of Peak Input Voltage V <sub>in</sub> and Collector Cutoff Current I <sub>CEX</sub> , ②+,④-		mA
	DC Current Gain	h <sub>FE</sub>	MAX 0.1	MAX 0.1	
	Collector to Emitter Saturation Voltage	V <sub>CE(sat)</sub>	13~26	8~16	
D1	Reverse Current	I <sub>R</sub>	I <sub>c</sub> =1.5A, I <sub>B</sub> =0.3A, ②+,④-,⑤I <sub>B</sub>		V
	Forward Voltage	V <sub>F</sub>	MAX 1.0	MAX 1.0	
Driving Saturation Voltage	V <sub>D(sat)</sub>	I <sub>c</sub> =1.5A, I <sub>B</sub> =0.3A, ⑤+,④-	MAX 2.5	MAX 2.5	°C/W
			MIN 1.7	MIN 1.7	
			MAX 2.3	MAX 2.3	

●Standard Operating Condition•Design Standard For Application Circuit

Item	Conditions	Ratings		Unit
		P Class	N Class	
Input Rated Voltage		AC90~274	AC90~274	V
Output Nominal Wattage		24	24	W
Output Nominal Voltage		12	12	V
Output Nominal Current		2	2	A

●Standard Operating Condition•Standard Operating Characteristics (Ta=25°C)

Item	Conditions	Ratings		Unit		
		P Class	N Class			
Minimum Input Full Load Output Voltage	V <sub>in</sub> =90V, I <sub>O</sub> =2A	12.0±0.6	12.0±0.6	V	Fig 2, ① Refer	
Maximum Input Light Load Output Voltage	V <sub>in</sub> =274V, I <sub>O</sub> =0.2A	12.0±0.6	12.0±0.6	V	Fig 2, ② Refer	
AC Input Voltage	I <sub>O</sub> =2A	MAX 85	MAX 85	V		
Over Current Protection	Foldback Current	V <sub>in</sub> =274V, V <sub>O</sub> =10V	MAX 3.5	MAX 3.5	A	Fig 2, ③ Refer
	Short Circuit	V <sub>in</sub> =274V, R <sub>O</sub> =0.5Ω	Nodamage To Any Device, Automatic Recovery.		-	Fig 2, ④ Refer
Output Ripple Noise	V <sub>in</sub> =90~274V, I <sub>O</sub> =0.2~2A	MAX 150	MAX 150	mV P-P		

Figure in ○=Terminal Sign

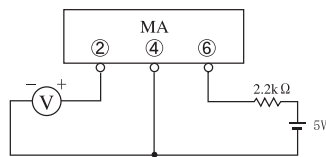


Fig1. Measurement Circuit

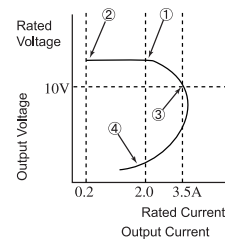
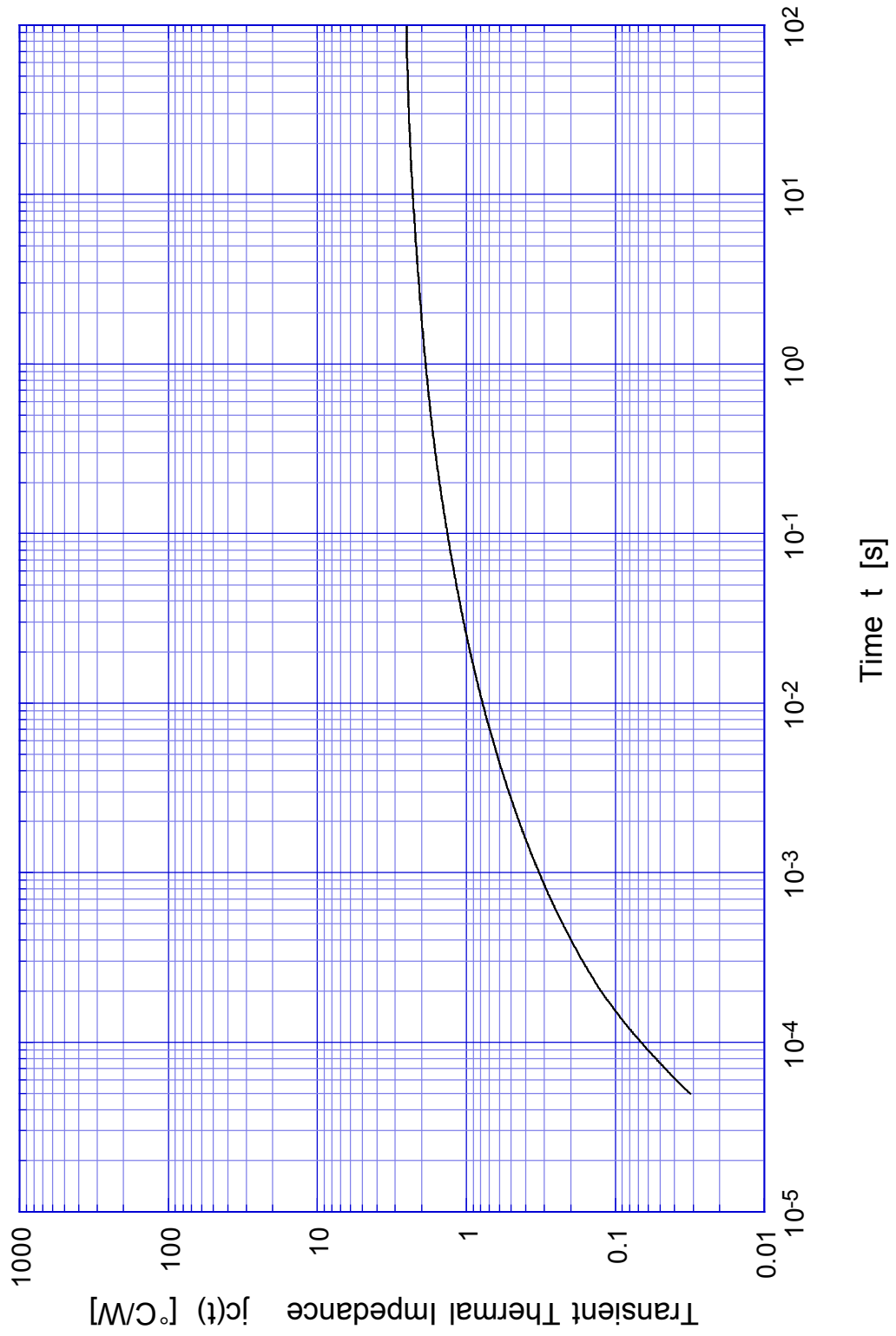


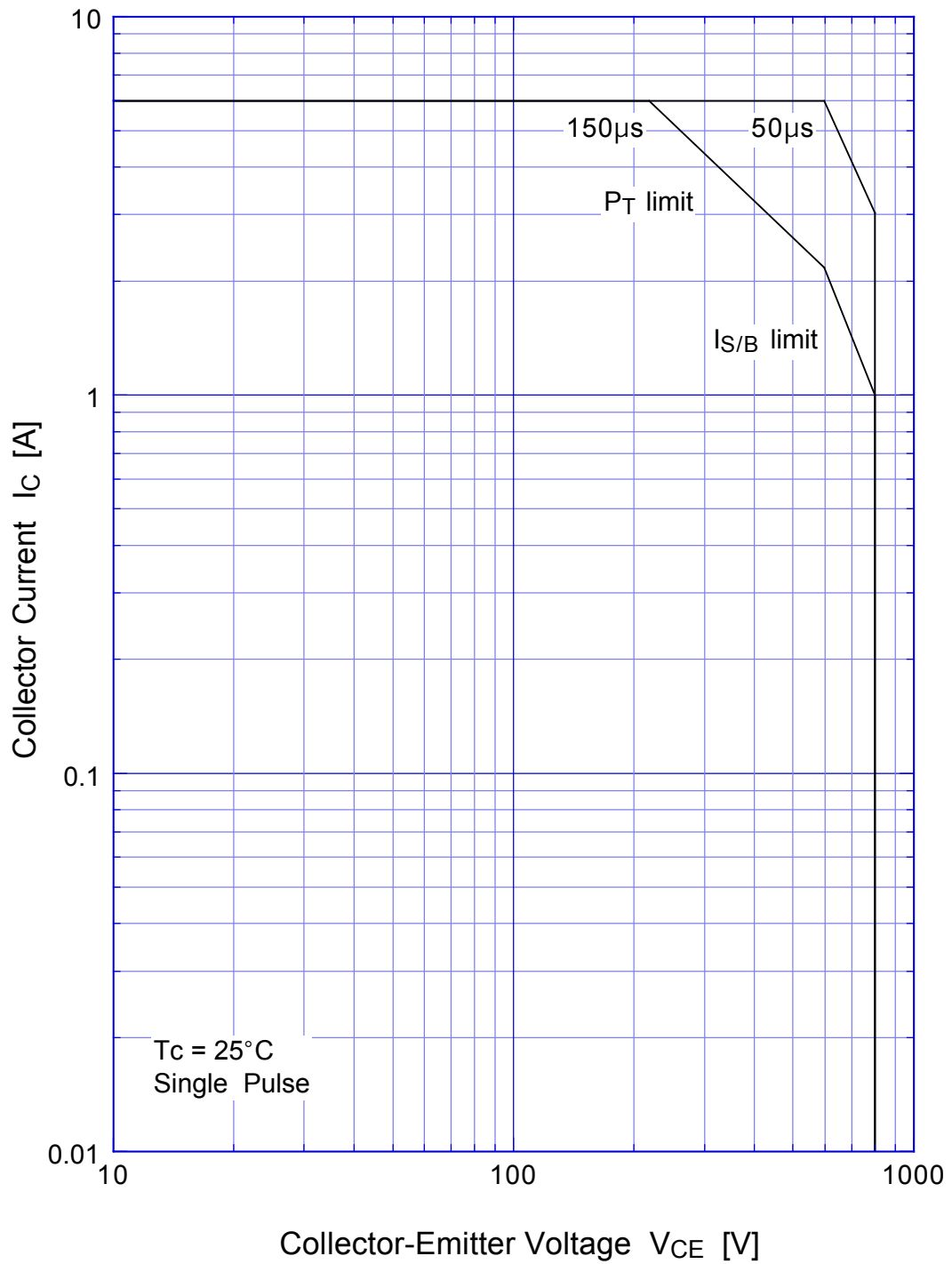
Fig2. Output Voltage/Current

# MA1050 Transient Thermal Impedance



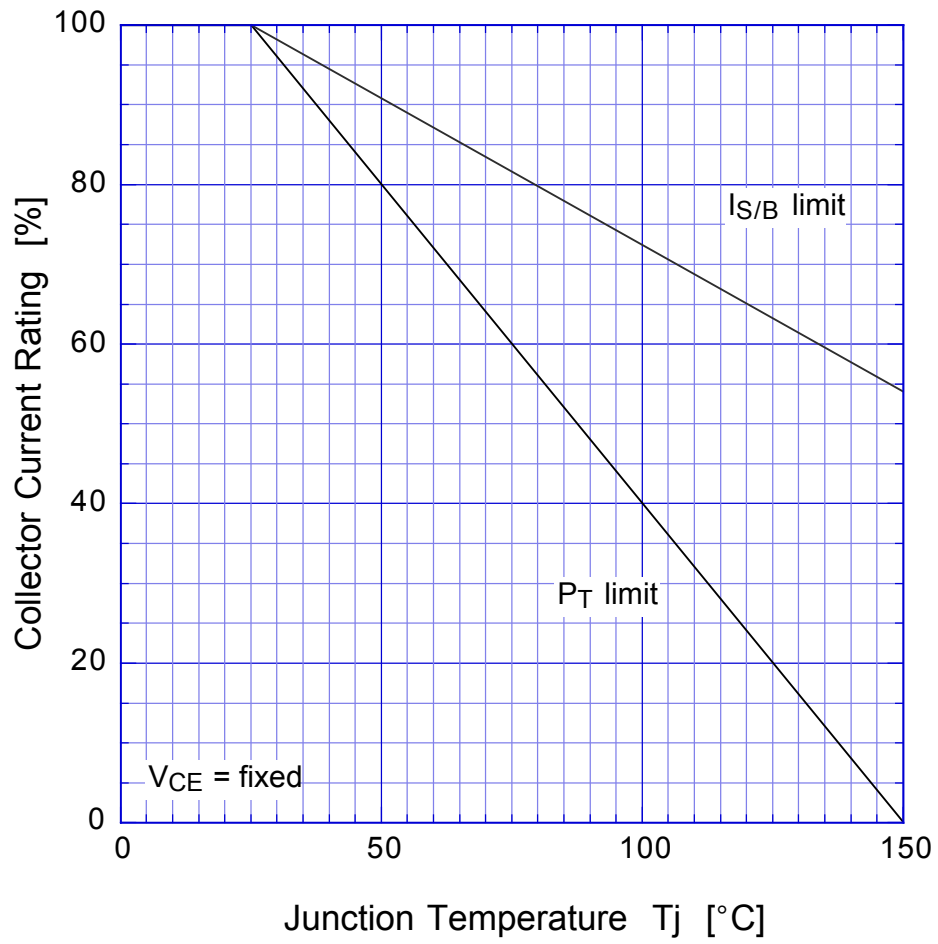
# MA1050

## Forward Bias SOA



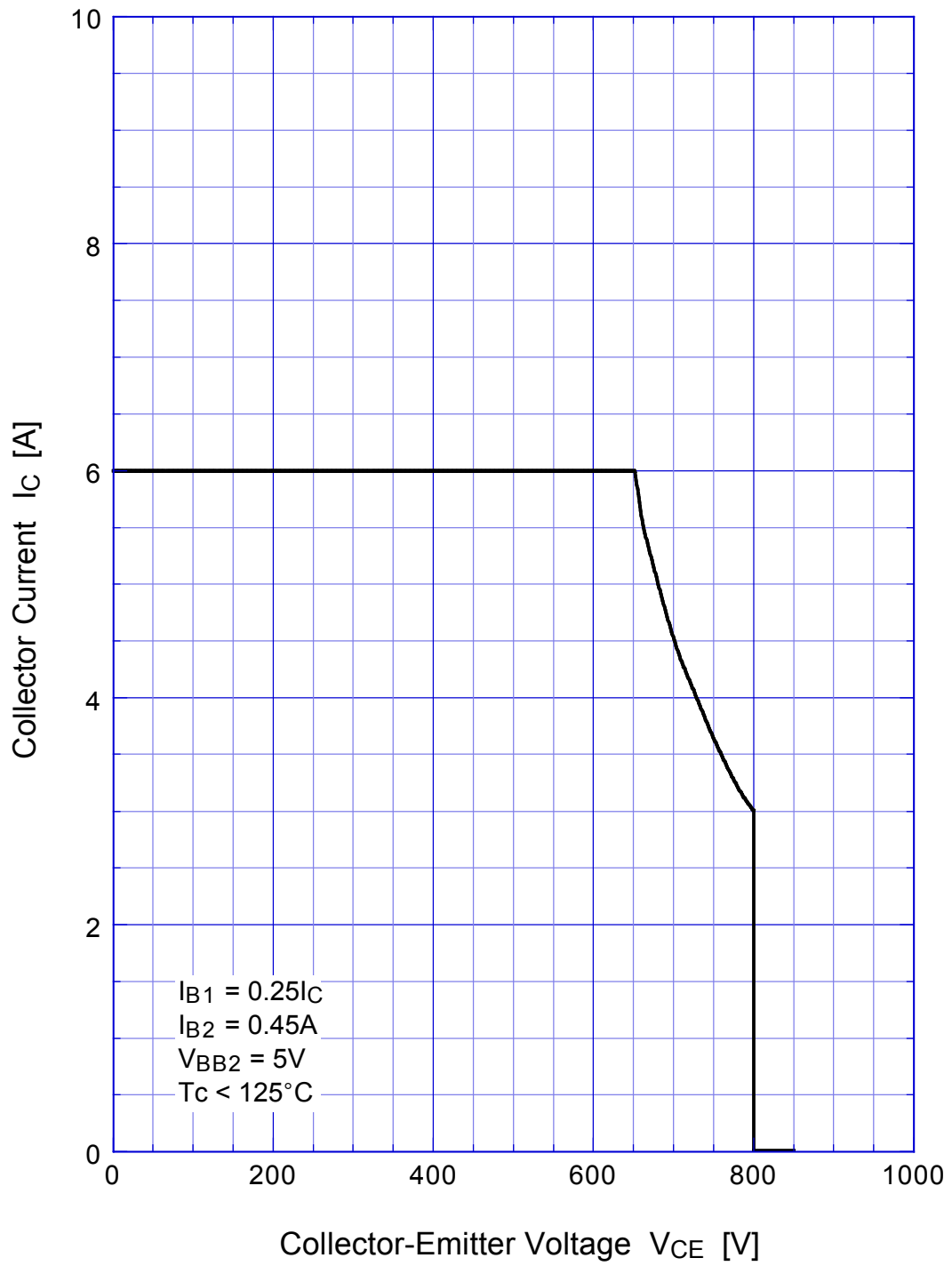
# MA1050

## Collector Current Derating



# MA1050

## Reverse Bias SOA



# MA1050

## hFE - I<sub>C</sub>

